

CONDOMINIUM PLAN

TEGRA SAN JOSE MEDICAL OFFICE CONDOMINIUMS
PARCEL 2 OF PARCEL MAP REGIONAL MEDICAL CENTER,
BOOK 789 OF MAPS, PAGE 41, SAN JOSE, CALIFORNIA

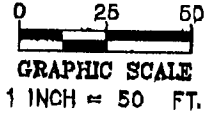
NOVEMBER, 2006

HMH San Jose
(408) 487-2200
Gilroy
(408) 846-0767
ENGINEERS www.hmh-engineers.com

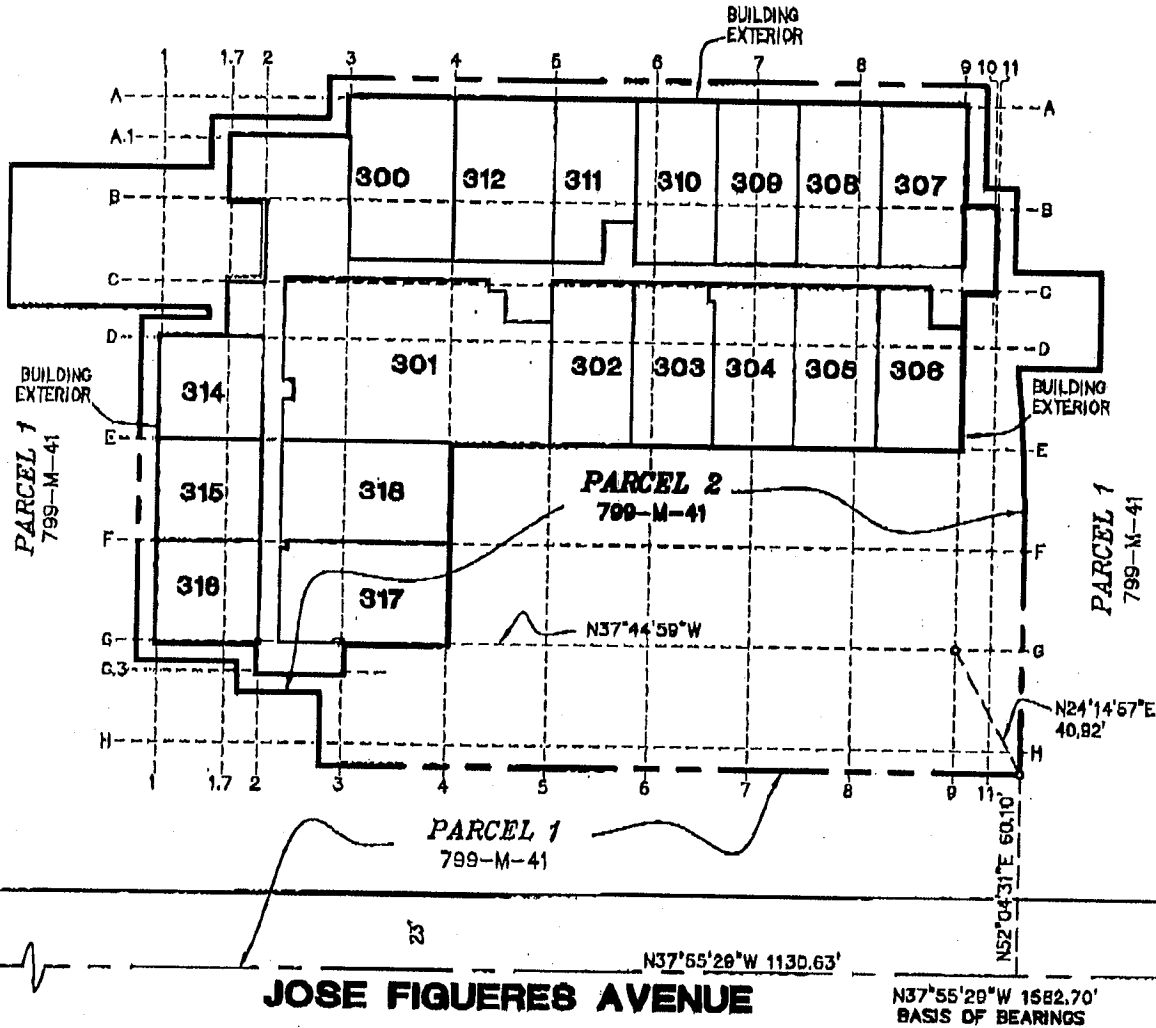
LEGEND

- LINE NOT DRAWN TO SCALE
- COMMON DIMENSION POINT
- STANDARD CITY MOUNUMENT FOUND

-ALL DIMENSIONS AND ELEVATIONS ARE IN FEET AND DECIMALS THEREOF.
-ALL DIMENSION LINES ARE PARALLEL WITH OR PERPENDICULAR TO EACH OTHER, UNLESS NOTED OTHERWISE.



PARCEL 1
799-M-41



McKEE ROAD

JOSE FIGUERES AVENUE

BUILDING-GRID TIE (THIRD FLOOR)
3151C005-08

PT05-075 SHEET 7 OF 20 SHEETS HMH 3151.06.250