



# FOR LEASE

- ✓ ± 2,574 Total Square Feet Available
- ✓ Zoned Marriott-Slaterville City C-2P
- ✓ Large Open Warehouse
- ✓ 14' H x 12' W Overhead Doors
- ✓ 18' High Ceiling Clearance
- ✓ Lots of Natural Light
- ✓ Direct Access to Freeway & Major Roads
- ✓ Tenant Improvements Negotiable
- ✓ MLS #2150116



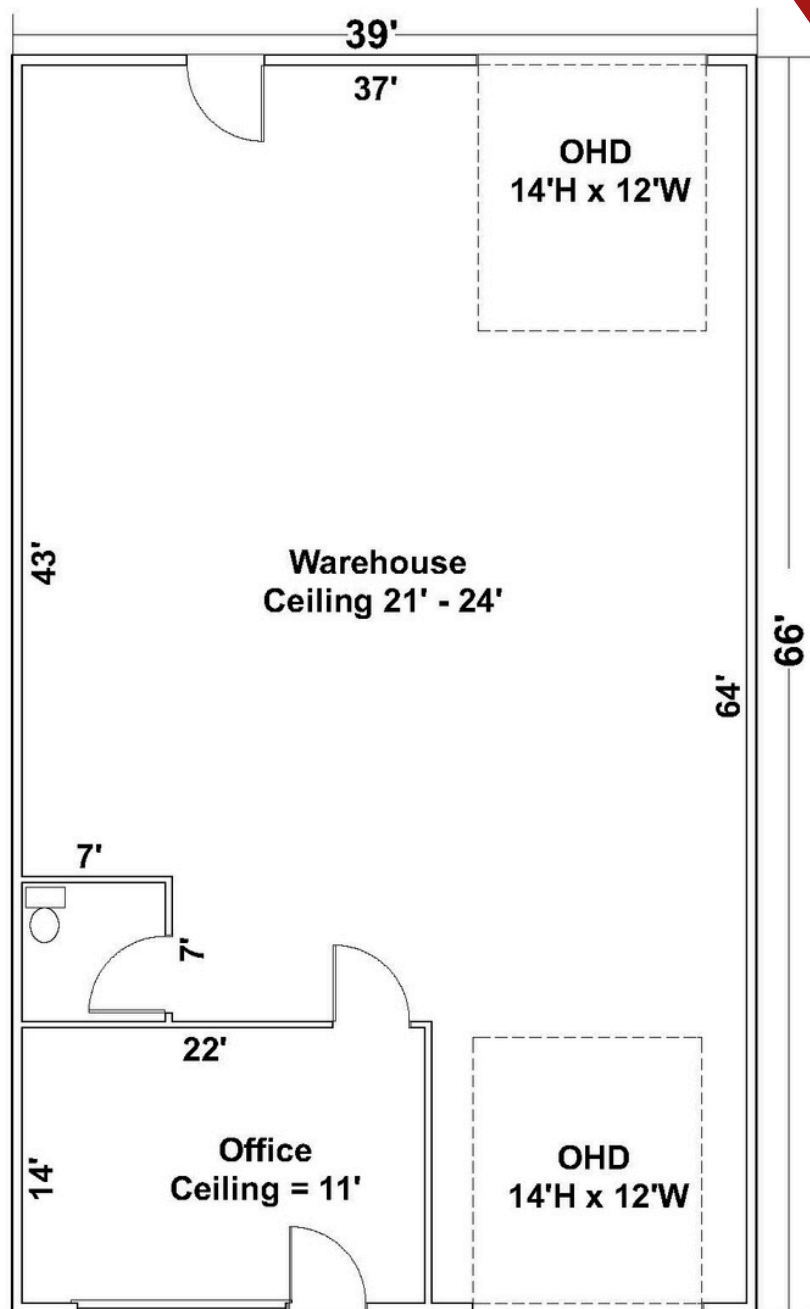
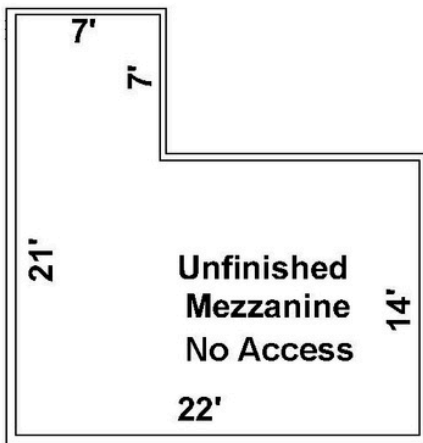
**\$2,950.00/MO**

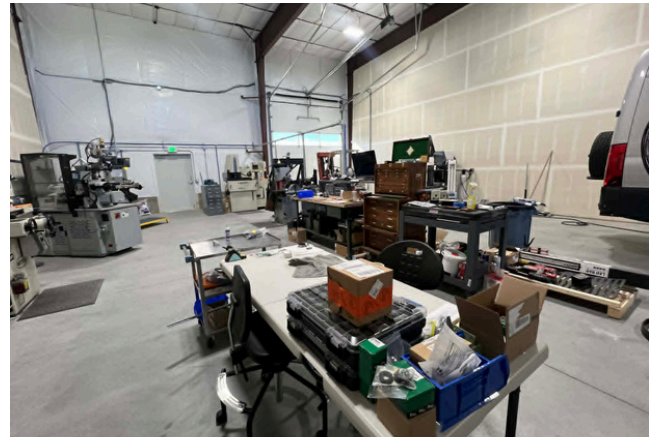
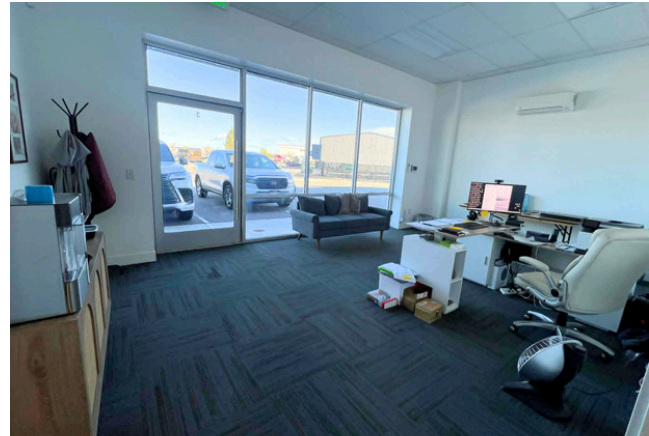
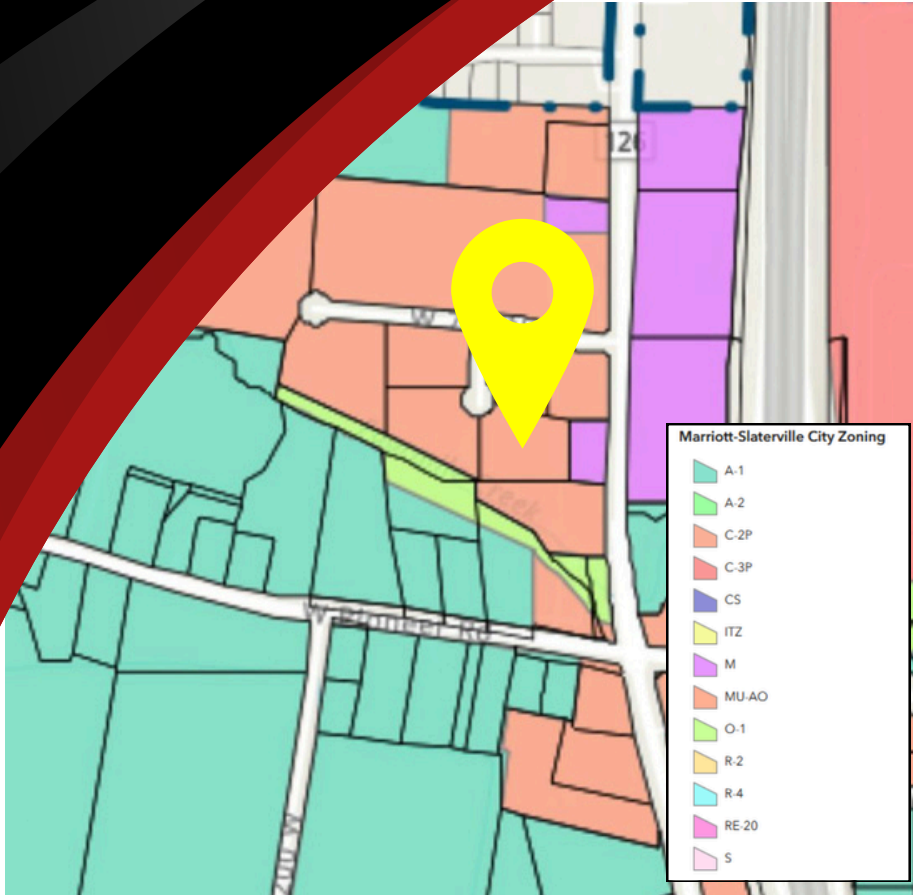
**640 N 2075 W Unit #3  
Marriott-Slaterville, UT 84404**

**CREST**  
REALTY

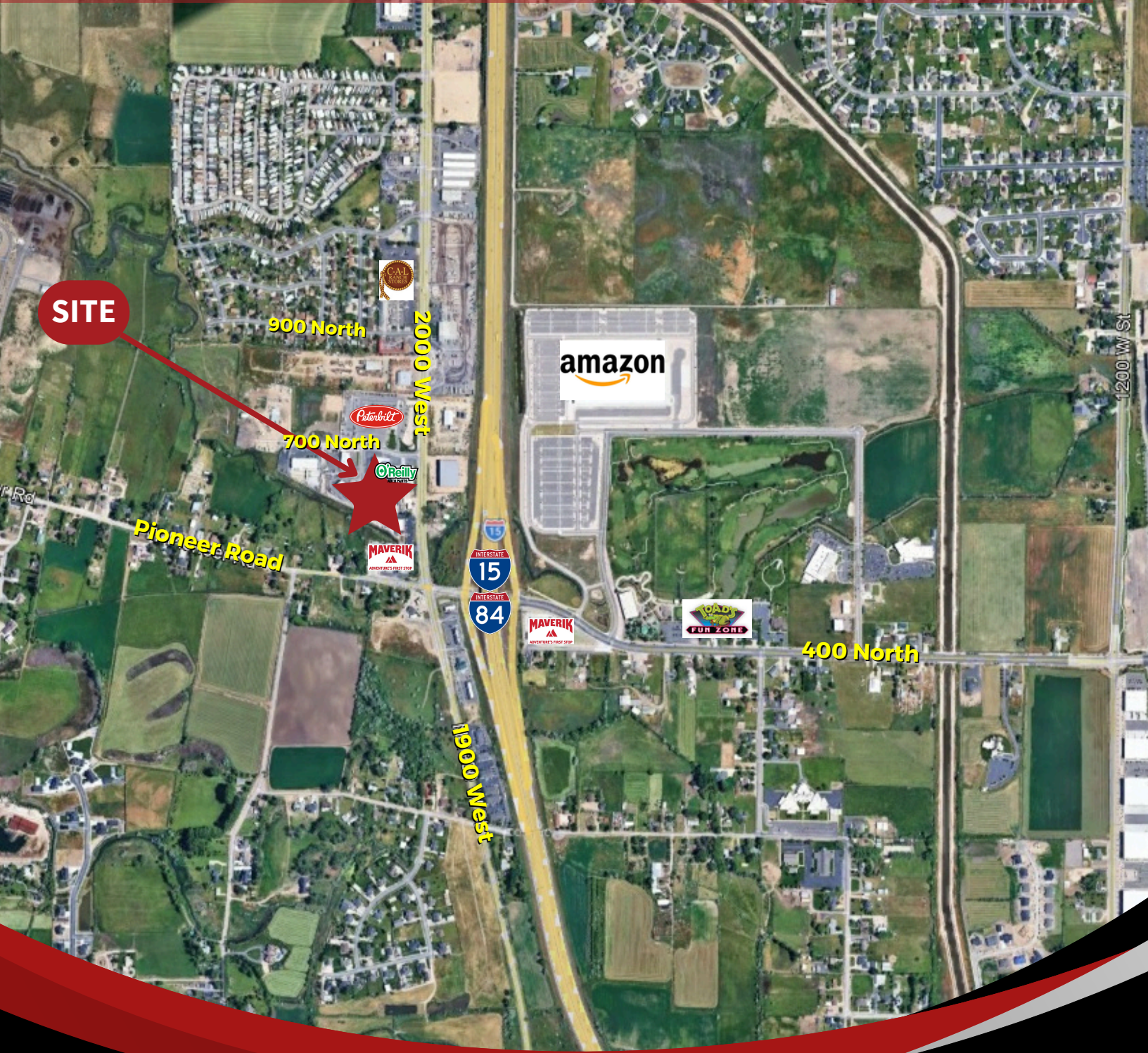
# Floor Plan

Office = 308 Sq Ft  
 Warehouse = 2,266 Sq Ft  
 Total = 2,574 Sq Ft  
 Unfinished Mezzanine = 357 Sq Ft





# 640 N 2075 W #3 MARRIOTT-SLATERVILLE UT 84404



**Garrett Pierson**  
801-644-1361  
g@crestutah.com



**Aaron McCrady**  
801-953-7012  
aaroncrest@gmail.com





# Contact Us



**Garrett Pierson**

801-644-1361

g@crestutah.com



**Aaron McCrady**

801-953-7012

aaroncrest@gmail.com



[www.crestutah.com](http://www.crestutah.com)

968 Chambers St #2,

South Ogden UT 84403

801-476-9500

