



200 SEGUIN ST

SAN ANTONIO, TX 78208



LUKE OWENS-BRAGG

210.451.0143

info@lockwoodrealtygroup.com

For Lease

TABLE OF CONTENTS

CONFIDENTIALITY & DISCLAIMER

All materials and information received or derived from Lockwood Realty Group, LLC, LLC its directors, officers, agents, advisors, affiliates and/or any third party sources are provided without representation or warranty as to completeness , veracity, or accuracy, condition of the property, compliance or lack of compliance with applicable governmental requirements, developability or suitability, financial performance of the property, projected financial performance of the property for any party's intended use or any and all other matters.

Neither Lockwood Realty Group, LLC, LLC its directors, officers, agents, advisors, or affiliates makes any representation or warranty, express or implied, as to accuracy or completeness of the any materials or information provided, derived, or received. Materials and information from any source, whether written or verbal, that may be furnished for review are not a substitute for a party's active conduct of its own due diligence to determine these and other matters of significance to such party. Lockwood Realty Group, LLC, LLC will not investigate or verify any such matters or conduct due diligence for a party unless otherwise agreed in writing.

EACH PARTY SHALL CONDUCT ITS OWN INDEPENDENT INVESTIGATION AND DUE DILIGENCE.

Any party contemplating or under contract or in escrow for a transaction is urged to verify all information and to conduct their own inspections and investigations including through appropriate third party independent professionals selected by such party. All financial data should be verified by the party including by obtaining and reading applicable documents and reports and consulting appropriate independent professionals. Lockwood Realty Group, LLC, LLC makes no warranties and/or representations regarding the veracity, completeness, or relevance of any financial data or assumptions. Lockwood Realty Group, LLC, LLC does not serve as a financial advisor to any party regarding any proposed transaction. All data and assumptions regarding financial performance, including that used for financial modeling purposes, may differ from actual data or performance. Any estimates of market rents and/or projected rents that may be provided to a party do not necessarily mean that rents can be established at or increased to that level. Parties must evaluate any applicable contractual and governmental limitations as well as market conditions,vacancy factors and other issues in order to determine rents from or for the property.

Legal questions should be discussed by the party with an attorney. Tax questions should be discussed by the party with a certified public accountant or tax attorney. Title questions should be discussed by the party with a title officer or attorney. Questions regarding the condition of the property and whether the property complies with applicable governmental requirements should be discussed by the party with appropriate engineers, architects, contractors, other consultants and governmental agencies. All properties and services are marketed by Lockwood Realty Group, LLC, LLC in compliance with all applicable fair housing and equal opportunity laws.

TABLE OF CONTENTS

PROPERTY INFORMATION	3
LOCATION INFORMATION	9
DEMOGRAPHICS	12



PROPERTY INFORMATION

SECTION 1

LUKE OWENS-BRAGG
210.451.0143
info@lockwoodrealtygroup.com

PROPERTY SUMMARY



LOCATION DESCRIPTION

200 Seguin St, located in the Government Hill neighborhood of San Antonio, is a prime industrial property close to downtown. It features two concrete and metal warehouses with roll-up bay doors and 25-ft clear ceilings, ideal for storage or industrial use. The property includes 20 parking spaces and offers excellent access to major transportation routes. Its central location provides visibility and accessibility in a vibrant business area. Perfect for businesses seeking functional space in a strategic location.

OFFERING SUMMARY

Lease Rate:	Negotiable
Number of Units:	5
Available SF:	1,551 SF
Lot Size:	1.638 Acres
Building Size:	42,896 SF

DEMOGRAPHICS	1 MILE	3 MILES	5 MILES
Total Households	4,458	38,649	125,122
Total Population	11,708	99,667	330,690
Average HH Income	\$57,548	\$79,662	\$72,589

PROPERTY DESCRIPTION



PROPERTY DESCRIPTION

\$25.00 All In!! Welcome to 200 Seguin St, where industrial potential meets city-center convenience. In the bustling Government Hill area, this property offers the perfect blend of location and function.

In-Demand Warehouses: With I-2 zoning, these warehouses are tailor-made for businesses that require roll-up bay doors for smooth operations.

Downtown Hub: Situated near the heart of downtown San Antonio, you'll have easy access to the city's dynamic business environment.

Strategic MSA Location: This property resides on Railway in the MSA, making it a prime pick for those looking to capitalize on a strategic location.

High Traffic Zone: Your business will thrive in this high-traffic area, ensuring visibility and accessibility.

Industrial Excellence: Both warehouses feature durable concrete blocks and metal construction, offering a solid foundation for your operations.

Land Negotiations: In addition to the existing property, negotiations are underway for more land across the street, potentially offering additional parking space to cater to your specific requirements.

COMPLETE HIGHLIGHTS



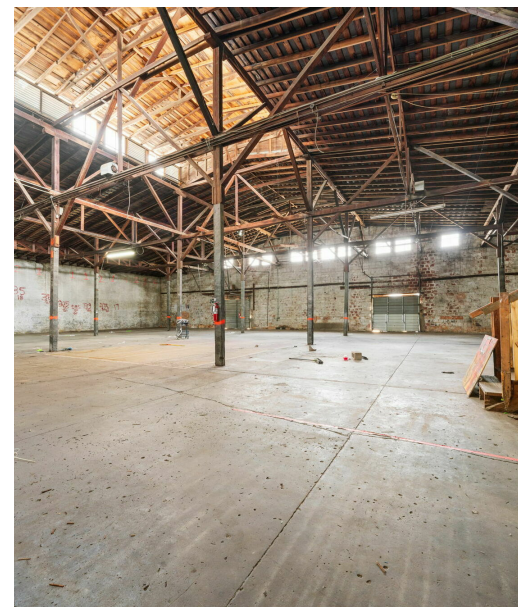
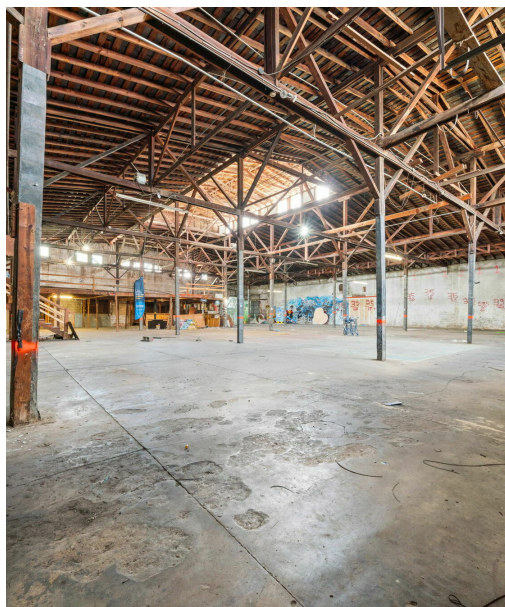
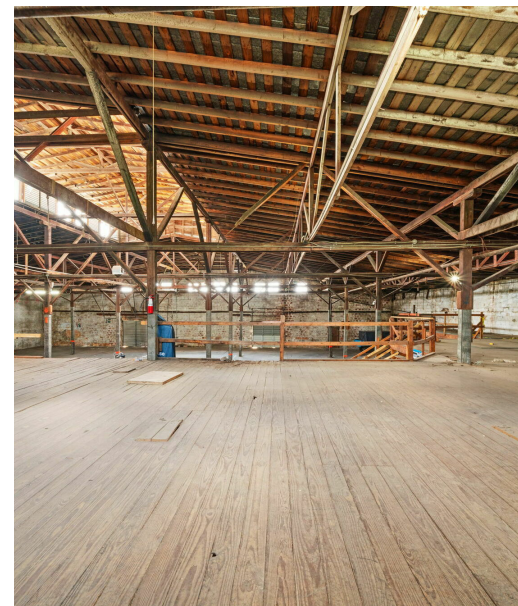
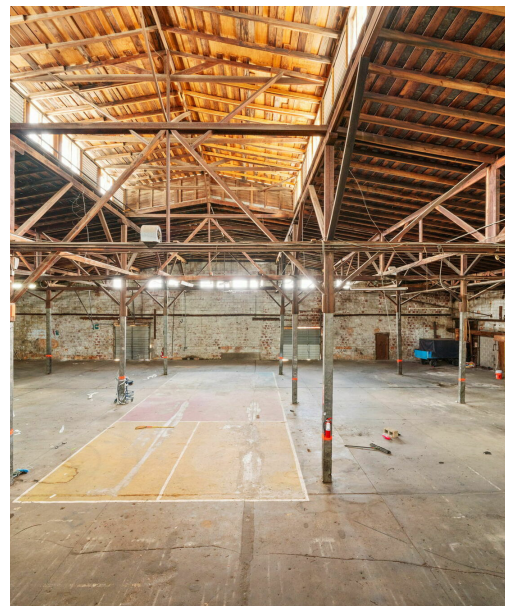
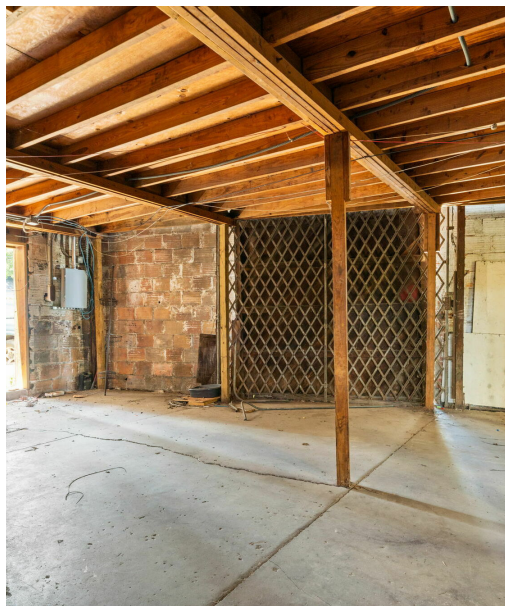
BUILDING INFORMATION

Tenancy	Multiple
Ceiling Height	25 ft
Number of Floors	2
Average Floor Size	21,448 SF
Year Built	1935
Construction Status	Existing
Free Standing	Yes
Number of Buildings	1

PROPERTY HIGHLIGHTS

- Prime location in vibrant San Antonio, TX
- Versatile floor plan for customizable use
- Modern and attractive building design
- Ample parking for staff and visitors
- High visibility for increased foot traffic
- Excellent signage opportunities for tenant visibility
- Nearby public transportation options
- Close proximity to major highways
- Surrounded by thriving businesses and amenities

ADDITIONAL PHOTOS



LEASE SPACES



LEASE INFORMATION

Lease Type:	NNN	Lease Term:	Negotiable
Total Space:	1,551 SF	Lease Rate:	Negotiable

AVAILABLE SPACES

SUITE	TENANT	SIZE (SF)	LEASE TYPE	LEASE RATE	DESCRIPTION
114 Seguin St - Warehouse A	Available	1,551 SF	NNN	Negotiable	1,551 SQFT available at 200 Seguin St for \$2500 flat rate, all in. This location offers excellent visibility and accessibility, making it ideal for a variety of business uses. Positioned in a desirable area with steady traffic and growth potential, this space is ready for your business vision.

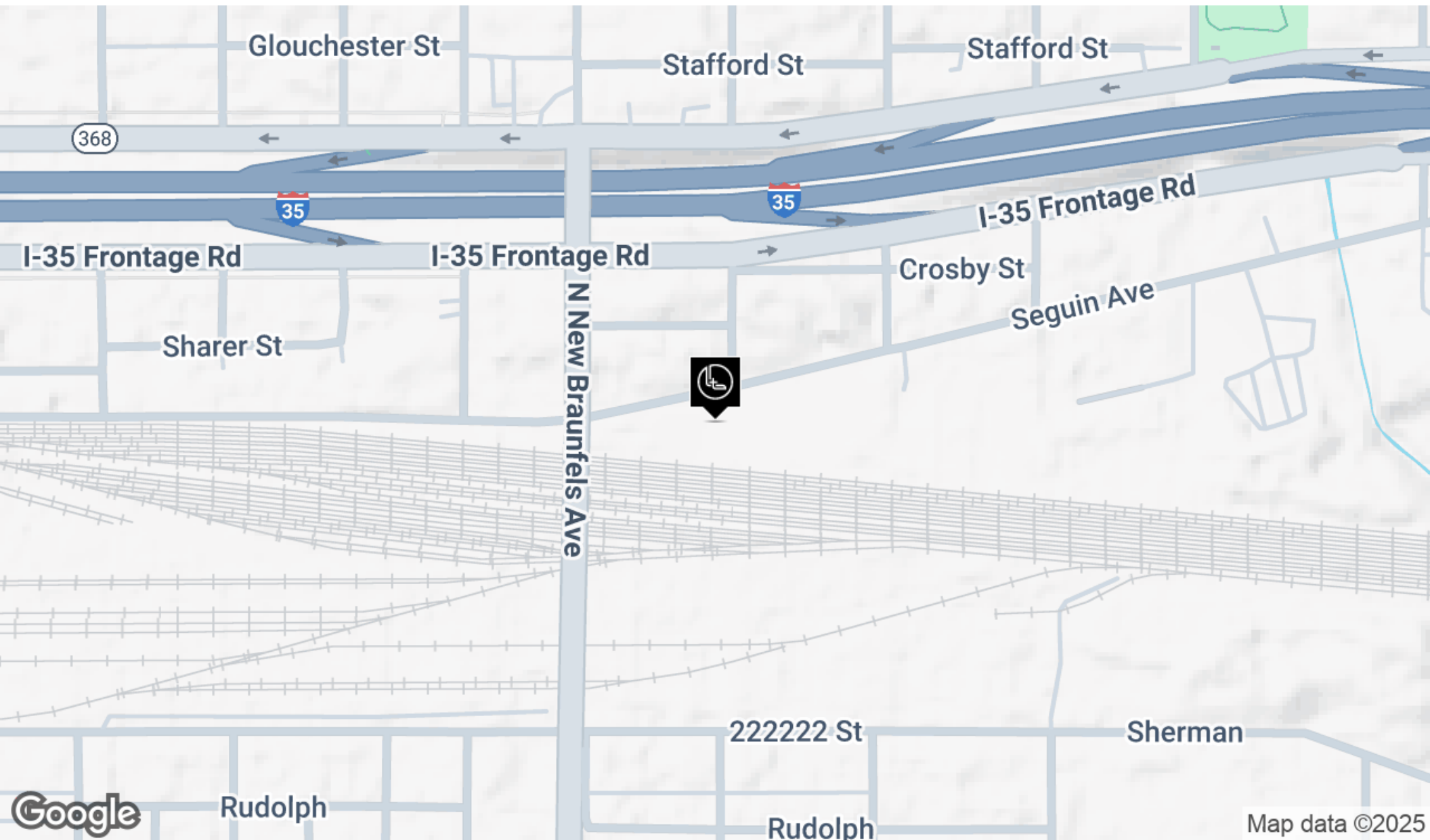


LOCATION INFORMATION

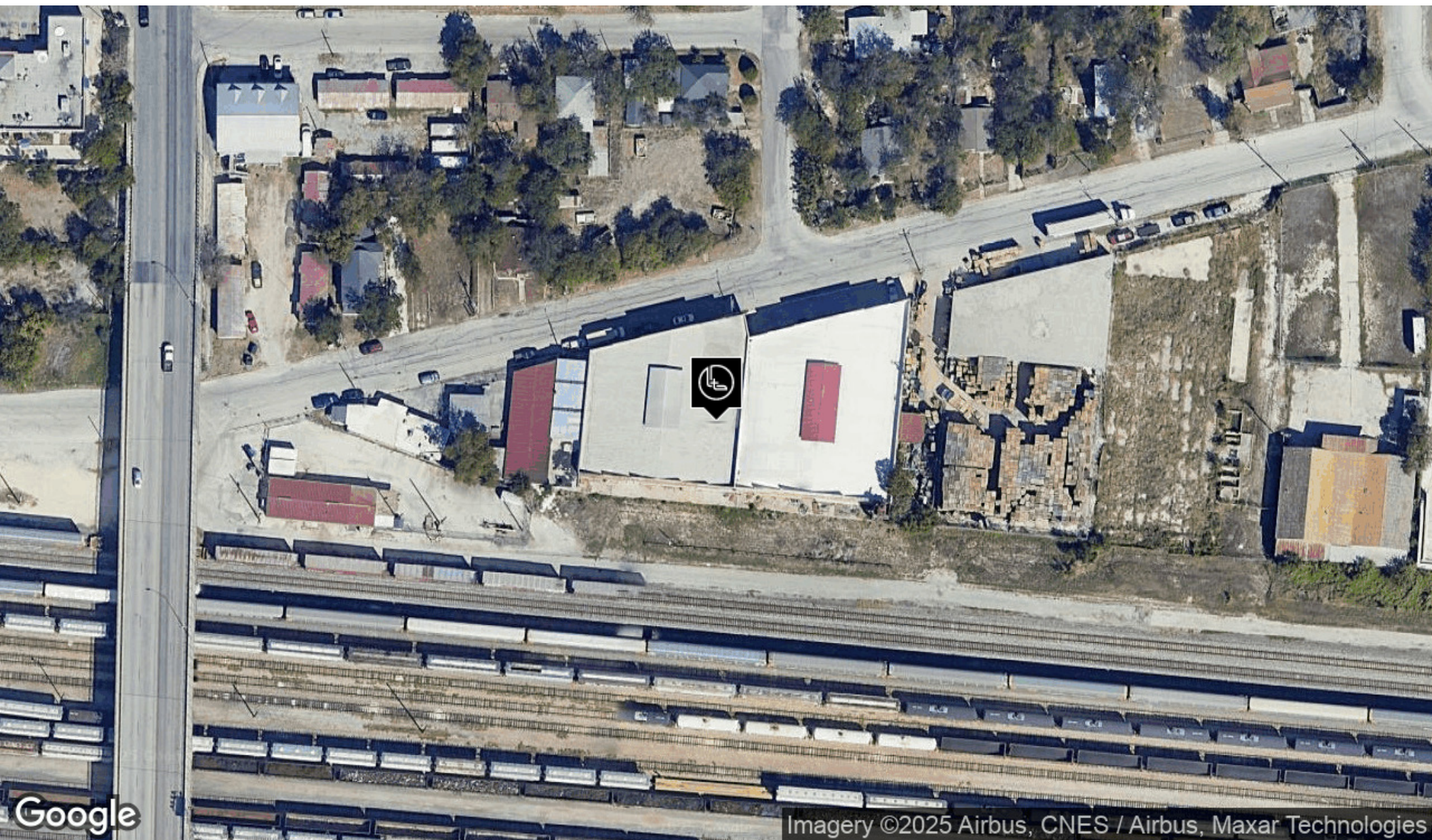
SECTION 2

LUKE OWENS-BRAGG
210.451.0143
info@lockwoodrealtygroup.com

LOCATION MAP



AERIAL MAP





DEMOGRAPHICS

SECTION 3

LUKE OWENS-BRAGG
210.451.0143
info@lockwoodrealtygroup.com

DEMOGRAPHICS MAP & REPORT

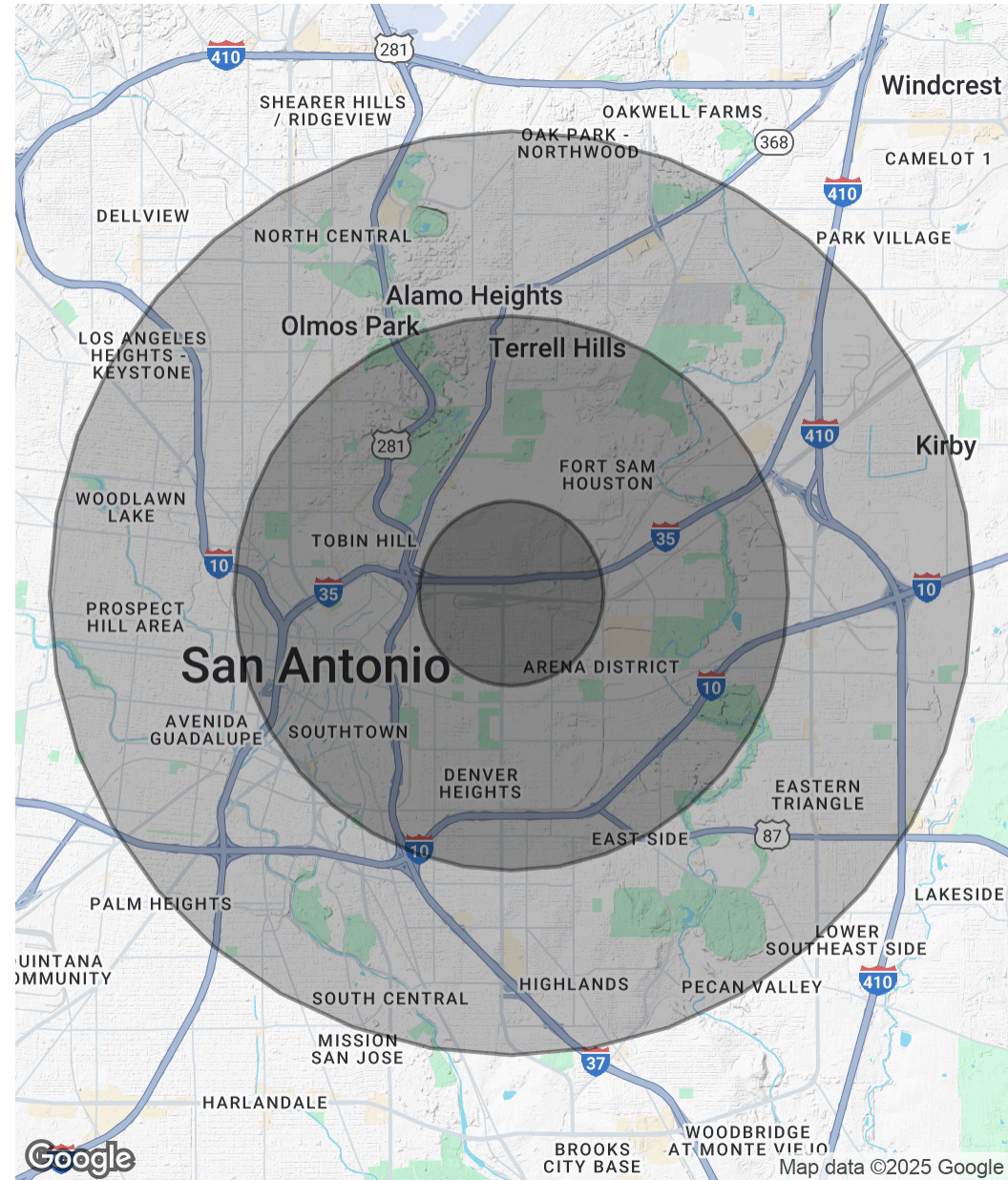
POPULATION

	1 MILE	3 MILES	5 MILES
Total Population	11,708	99,667	330,690
Average Age	36	39	39
Average Age (Male)	35	38	38
Average Age (Female)	37	40	41

HOUSEHOLDS & INCOME

	1 MILE	3 MILES	5 MILES
Total Households	4,458	38,649	125,122
# of Persons per HH	2.6	2.6	2.6
Average HH Income	\$57,548	\$79,662	\$72,589
Average House Value	\$300,829	\$375,943	\$297,831

Demographics data derived from AlphaMap



AREA ANALYTICS

ETHNICITY	1 MILE	3 MILES	5 MILES
Population Hispanic	7,802	57,029	228,239
Population Non-Hispanic	3,906	42,638	102,451

ETHNICITY (%)	1 MILE	3 MILES	5 MILES
Population Hispanic (%)	66.60%	57.20%	69%

RACE	1 MILE	3 MILES	5 MILES
Population White	3,935	44,558	141,368
Population Black	2,138	12,858	27,736
Population American Indian	205	1,367	4,766
Population Asian	145	1,801	4,372
Population Pacific Islander	14	130	329
Population Other	2,544	17,672	66,066

RACE (%)	1 MILE	3 MILES	5 MILES
Population White (%)	33.60%	44.70%	42.70%
Population Black (%)	18.30%	12.90%	8.40%
Population American Indian (%)	1.80%	1.40%	1.40%
Population Asian (%)	1.20%	1.80%	1.30%
Population Pacific Islander (%)	0.10%	0.10%	0.10%
Population Other (%)	21.70%	17.70%	20%

Map and demographics data derived from AlphaMap

