



121 Cleveland Ave SW
Canton, Ohio 44702

TOTAL SF AVAILABLE	29,440
LEASE RATE	\$9.00/SF
LEASE TYPE	Gross
YEAR BUILT	1963
ACRES	0.91
ZONING	B5

Property Features

- Great location in the center of downtown Canton.
- Countless restaurant and shops within walking distance.
- Multi-story parking garage.
- Reserved parking in heated garage available.
- Available Summer 2026

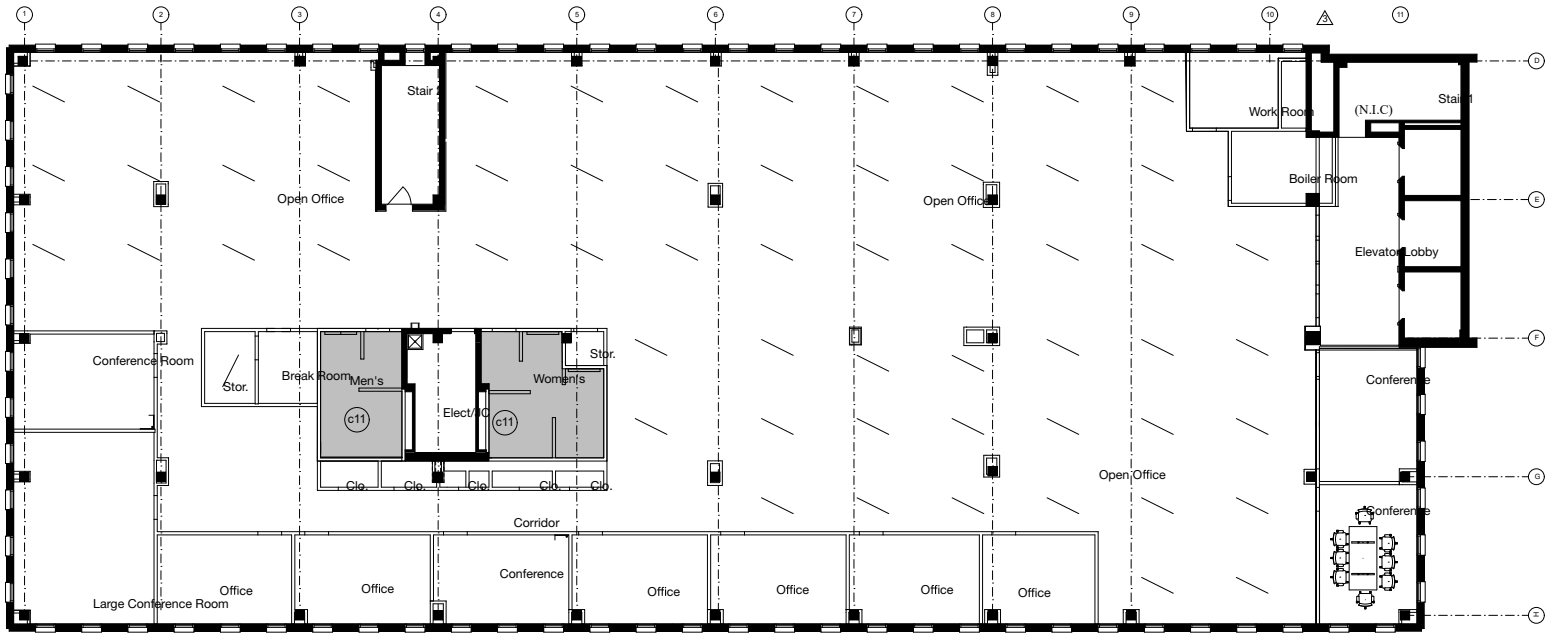
Jared Sanford

330 354 3466 • jared@naispring.com

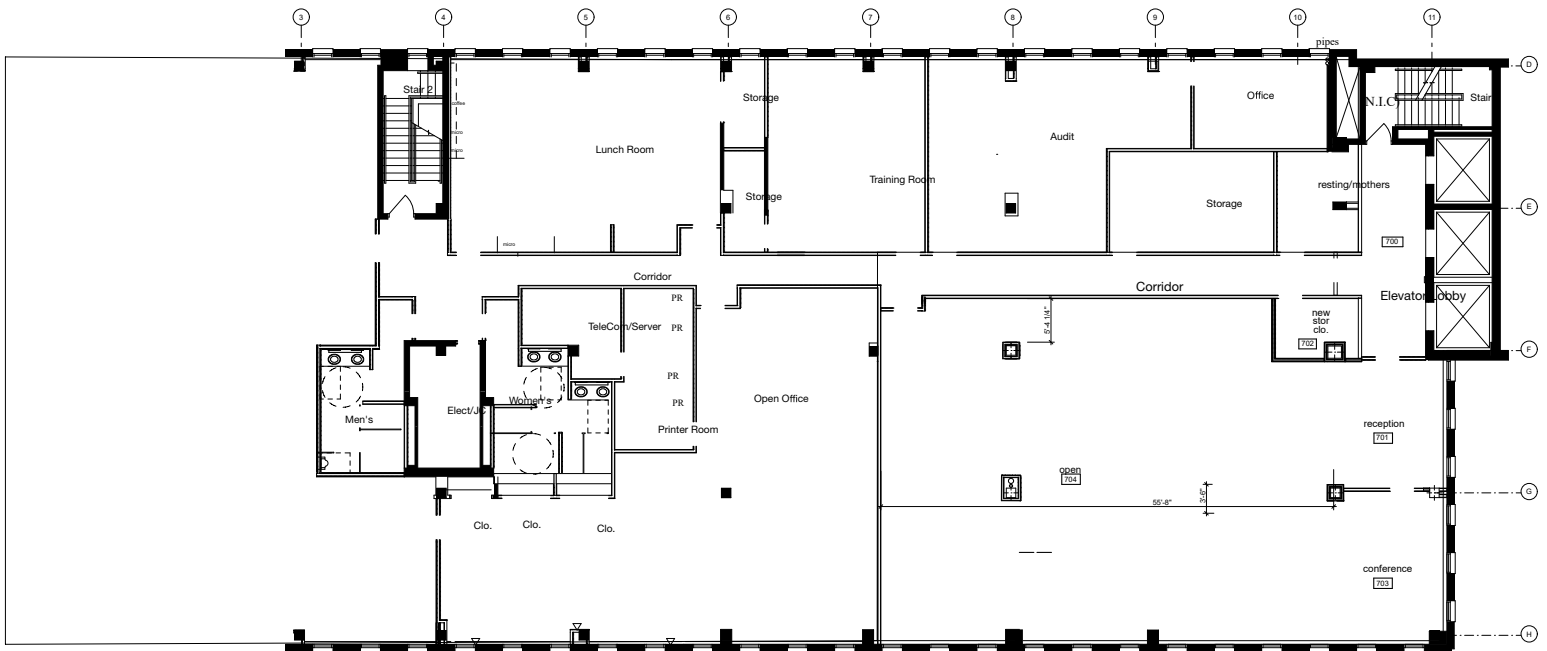
Sean Sanford

330 284 0331 • sean@naispring.com

121 Cleveland Ave SW
Canton, Ohio 44702



8th Floor - 14,720



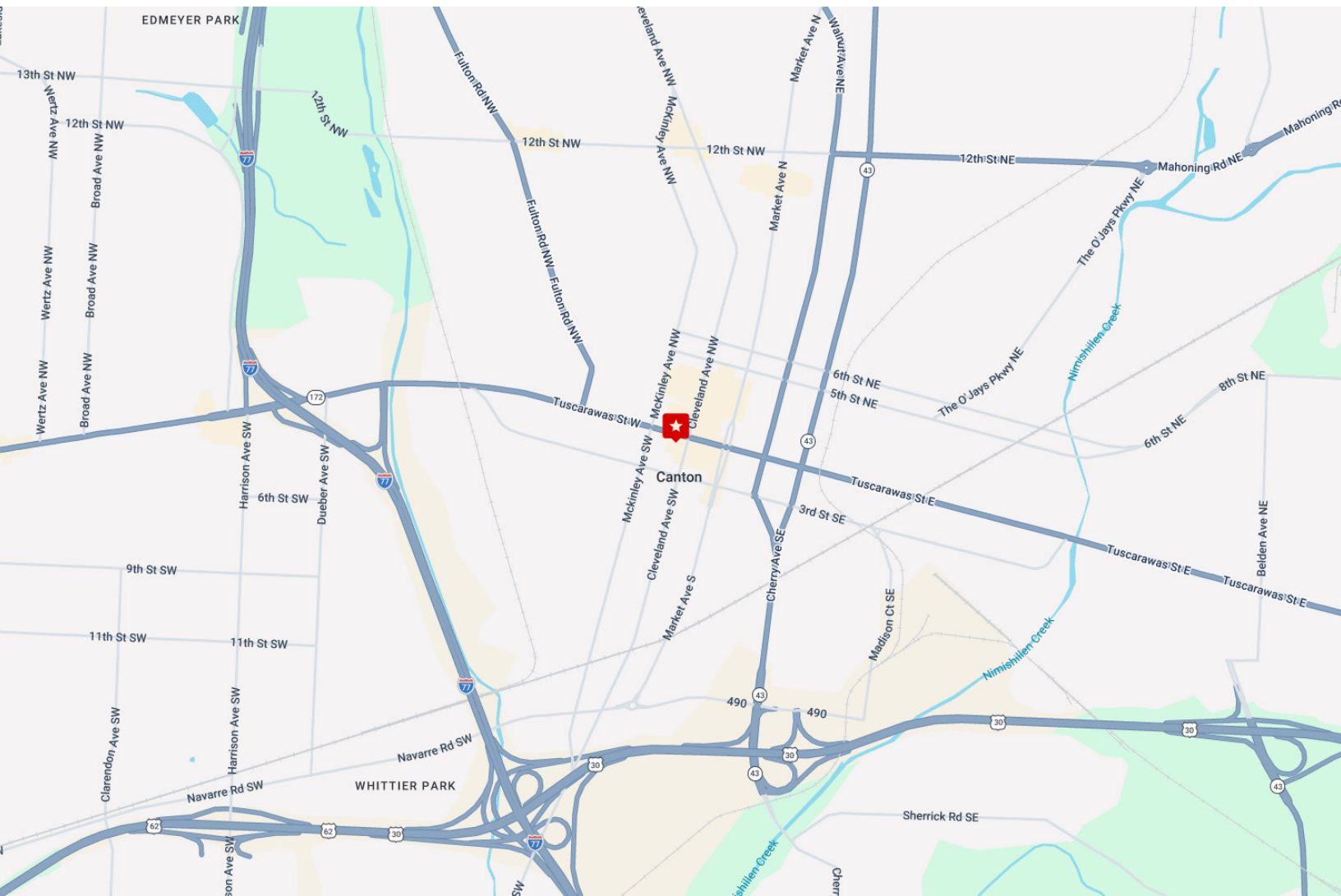
7th Floor - 14,720

*DIMENSIONS ARE APPROXIMATE. THIS INFORMATION IS FROM RELIABLE SOURCES BUT IS NOT GUARANTEED AND IS SUBJECT TO CHANGE

NO WARRANTY OR REPRESENTATION, EXPRESS OR IMPLIED, IS MADE AS TO THE ACCURACY OF THE INFORMATION CONTAINED HEREIN, AND THE SAME IS SUBMITTED SUBJECT TO ERRORS, OMISSIONS, CHANGE OF PRICE, RENTAL OR OTHER CONDITIONS, PRIOR SALE, LEASE OR FINANCING, OR WITHDRAWAL WITHOUT NOTICE, AND OF ANY SPECIAL LISTING CONDITIONS IMPOSED BY OUR PRINCIPALS NO WARRANTIES OR REPRESENTATIONS ARE MADE AS TO THE CONDITION OF THE PROPERTY OR ANY HAZARDS CONTAINED THEREIN ARE ANY TO BE IMPLIED.

8234 Pittsburg Ave NW
North Canton, Ohio 44720
330-966-8800
naispring.com

121 Cleveland Ave SW Canton, Ohio 44702



NO WARRANTY OR REPRESENTATION, EXPRESS OR IMPLIED, IS MADE AS TO THE ACCURACY OF THE INFORMATION CONTAINED HEREIN, AND THE SAME IS SUBMITTED SUBJECT TO ERRORS, OMISSIONS, CHANGE OF PRICE, RENTAL OR OTHER CONDITIONS, PRIOR SALE, LEASE OR FINANCING, OR WITHDRAWAL WITHOUT NOTICE, AND OF ANY SPECIAL LISTING CONDITIONS IMPOSED BY OUR PRINCIPALS NO WARRANTIES OR REPRESENTATIONS ARE MADE AS TO THE CONDITION OF THE PROPERTY OR ANY HAZARDS CONTAINED THEREIN ARE ANY TO BE IMPLIED.

8234 Pittsburg Ave NW
North Canton, Ohio 44720
330-966-8800
naispring.com