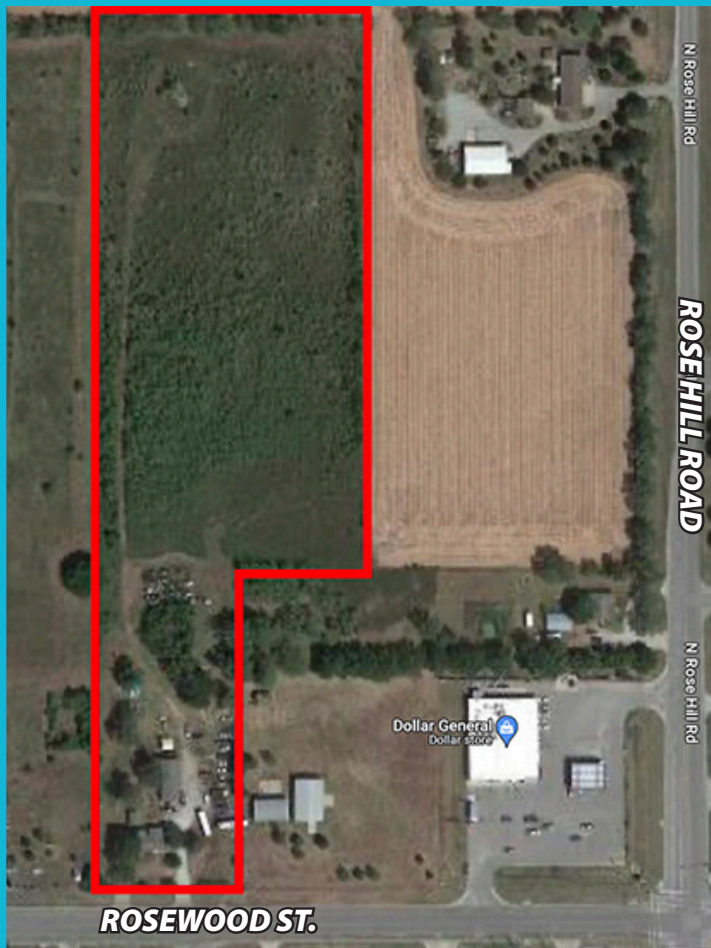


9.5 Acre Development Site

220 W. Rosewood, Rose Hill, Kansas 67133



SALES PRICE: \$630,000
LOT SIZE: 9.5 Acres
ZONING: Agriculture / Residential
Property is within Butler County, near Rose Hill City Limits.
2022 Taxes: \$1,134.01

DEMOGRAPHICS Rose Hill, Kansas

Population 4,399
Ave. Income \$85,947
Median Age 36.9

COMMUTE Miles Minutes

Wichita	17	26
Andover	9.6	15
Derby	9.4	15
Mulvane	13	18

PROPERTY HIGHLIGHTS:

9.5 ACRE - Intersection: Rose Hill Road and Rosewood Street.
Property near Retail locations, Rose Hill City Hall and Fire Station.

PRIME LOCATION FOR:

Residential • Multi Living Units • Commercial • Retail • Office • RV Park • Storage Unit Site

Information contained herein is deemed reliable but not guaranteed. Buyers and Buyers agent are responsible to order and complete property inspections, surveys, gather information regarding matters important to buyer such as: Utilities, current and possible Zoning change options, Land Use, Financing etc.

Seller is motivated and will consider reasonable offers.



Greg Tennant, Broker

cell: 316.409.0352

Jack Ballard, Realtor®

cell: 316.249.1675

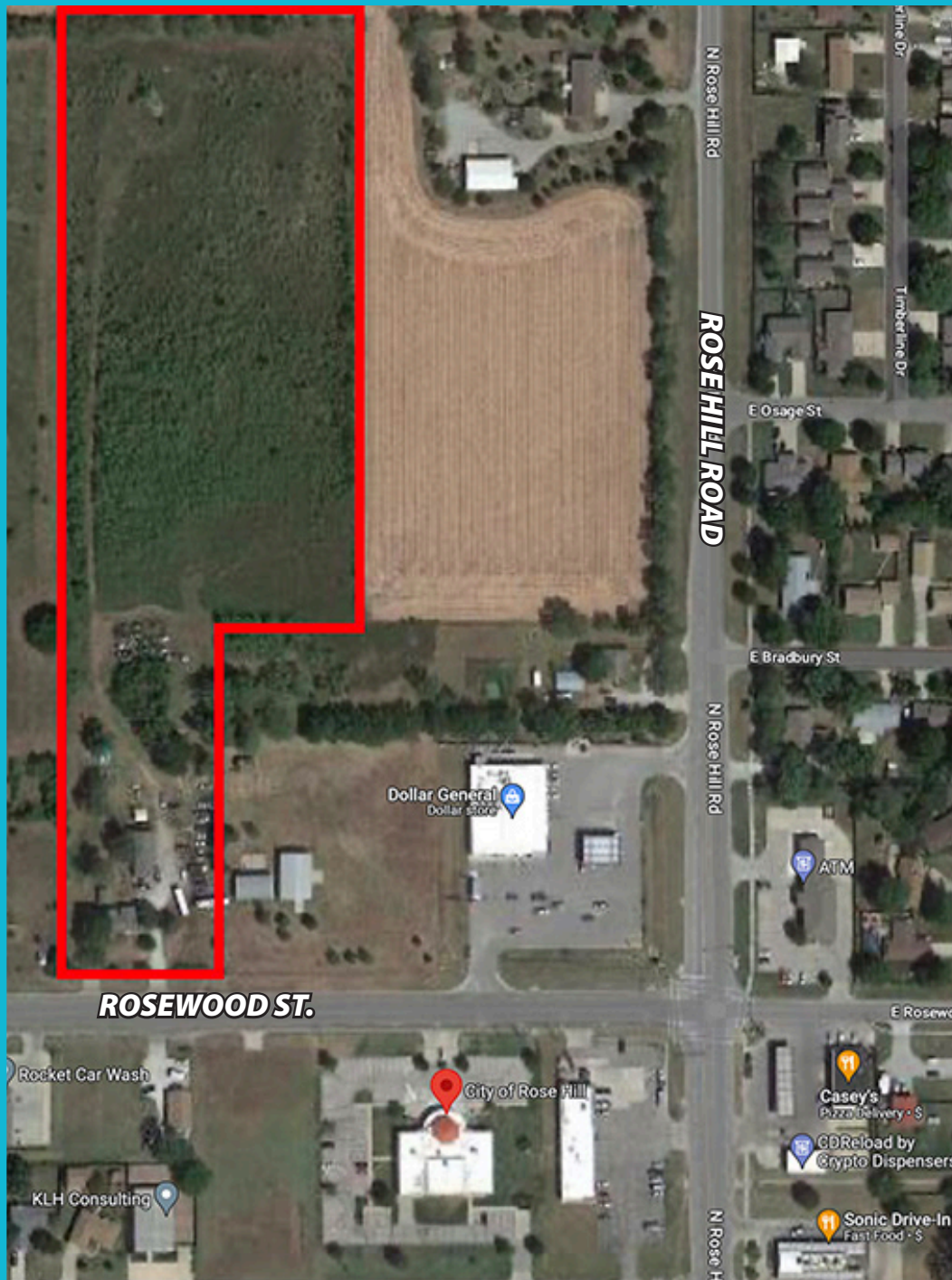
jck.ballrd@aol.com

Millenia Homes Office

phone: 316.260.2002
2113 N. Prescott Cr
Wichita, KS 67215

9.5 Acre Development Site

220 W. Rosewood, Rose Hill, Kansas 67133



Located Near:

- Emprise Bank
- Rose Hill City Hall
- Dollar General
- Casey's General Store
- Sonic
- Rocket Car Wash
- 3 Churches

Possible Uses:

- Residential
- Multi Living Units
- Commercial
- Retail
- Office
- RV Park
- Storage Unit Site



Greg Tennant, Broker
cell: 316.409.0352

Jack Ballard, Realtor®
cell: 316.249.1675
jck.ballrd@aol.com

Millenia Homes Office
phone: 316.260.2002
2113 N. Prescott Cr
Wichita, KS 67215