

OFFICE SPACE FOR LEASE



NINE 01

901 N. Lake Destiny Drive
Maitland, FL 32751

901 @ Maitland Center is a multi-story office building located in the Maitland Center Office Park. **New lobby transformations have been made. Recent renovations to the common areas and restrooms have been completed. New building and tenant signage have been installed.**

The easily accessible building sits along I-4, within Orlando's largest suburban office market and is close to Downtown Orlando.

[Lobby Virtual Tour: Click Here](#)

NEW BUILDING FEATURE

Tower has enhanced common area cleanings and put in place CDC recommended precautions to create a healthier building environment. All air filters have been upgraded to MERV – 9 rating or better.

**RSF AVAILABLE
1,295 - 11,159**

5% Co-Broker Commission



For more information, contact:

Mike Caridi, CCIM
(407) 659.0120 x101 | MCaridi@trpre.com

www.trpre.com

SPACE AVAILABLE 5% CO-BROKER COMMISSION

Suite	RSF
101	2,178
103	1,894
101 / 103	4,072
195	1,576
225	11,040
300	1,295
310	11,159 Virtual Tour



Rents from \$23.00/RSF - Full Service
Virtual Tour: Click Suite RSF

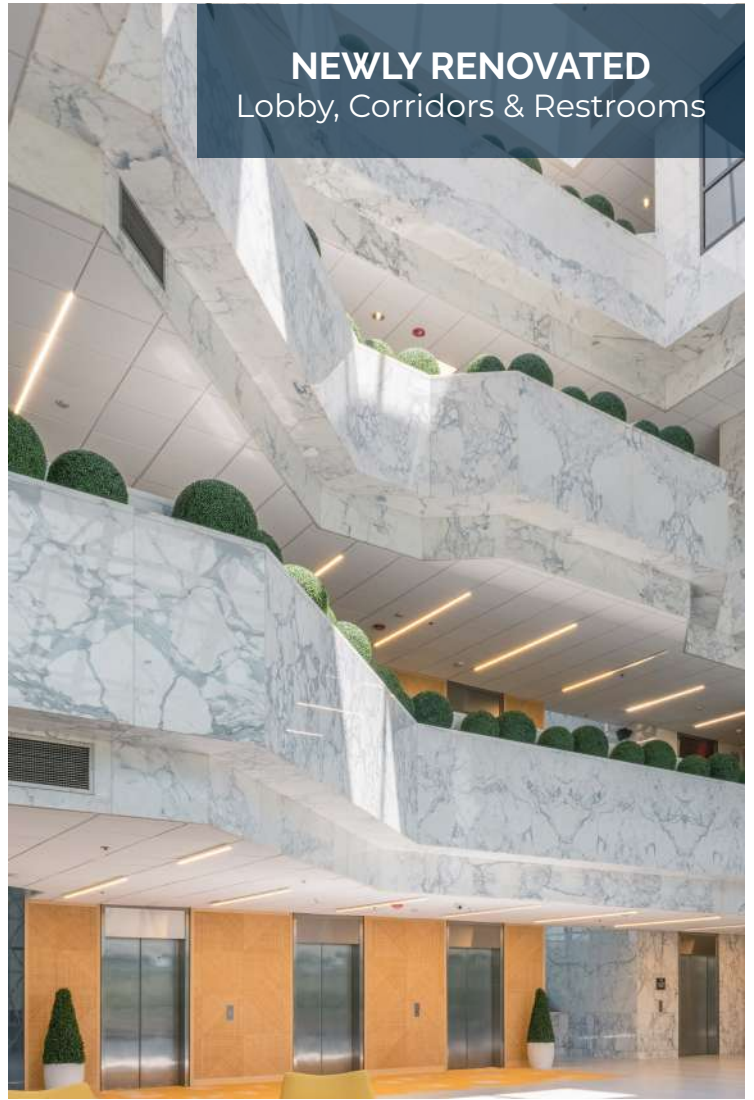
BUILDING FEATURES & AMENITIES

- ▶ New Lobby Transformation
- ▶ New Building & Tenant Signage-Installed
- ▶ Renovated Common Areas & Restrooms
- ▶ Highly Visible I-4 Pylon Signage
- ▶ Fitness Center & Building Cafe
- ▶ Recently Installed: Elevator Cab Air Purification System
- ▶ New Building Feature: Advanced and Targeted Cleanings of Common Area Spaces + MERV – 9 Air Filters
- ▶ After-Hours Security
- ▶ Covered Loading Dock + Leveler



For more information, contact:

Mike Caridi, CCIM
(407) 659.0120 x101 | MCaridi@trpcpre.com



NEWLY RENOVATED
Lobby, Corridors & Restrooms

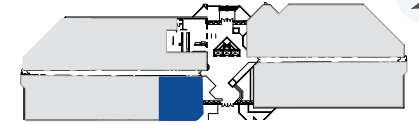


NEW SIGNAGE
I-4 Pylon, Building & Tenant

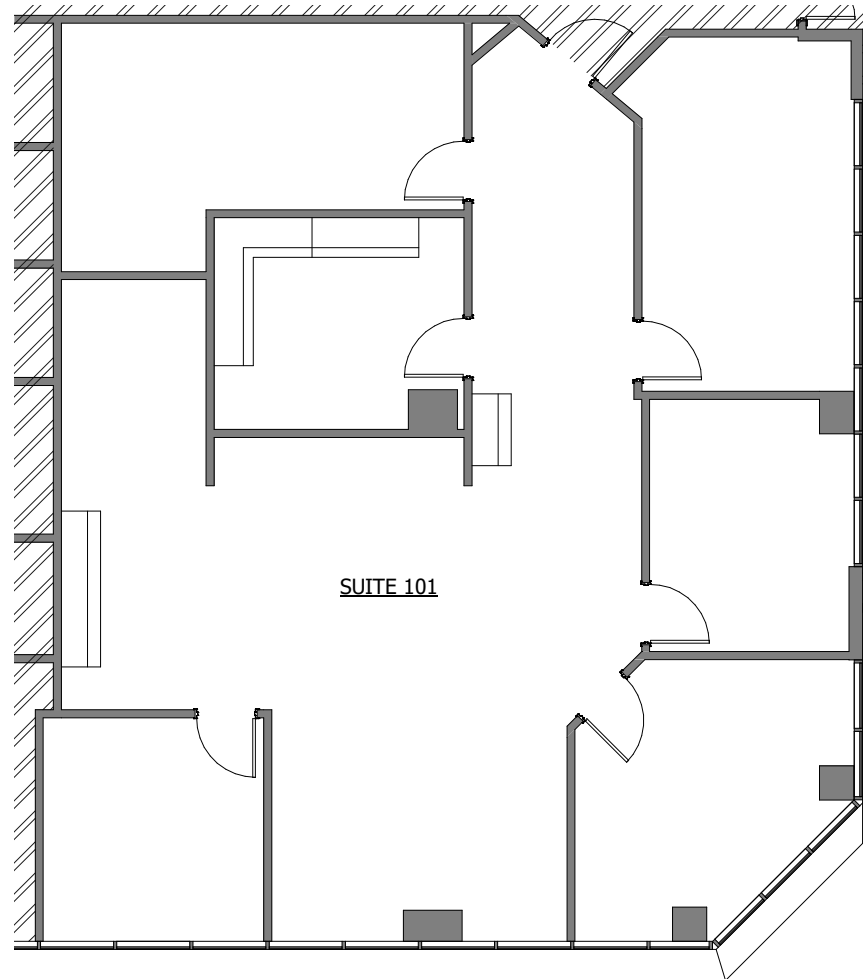
1st
Floor

Suite 101: 2,178 RSF

NORTH



Primary
Entrance



For more information, contact:

Mike Caridi, CCIM

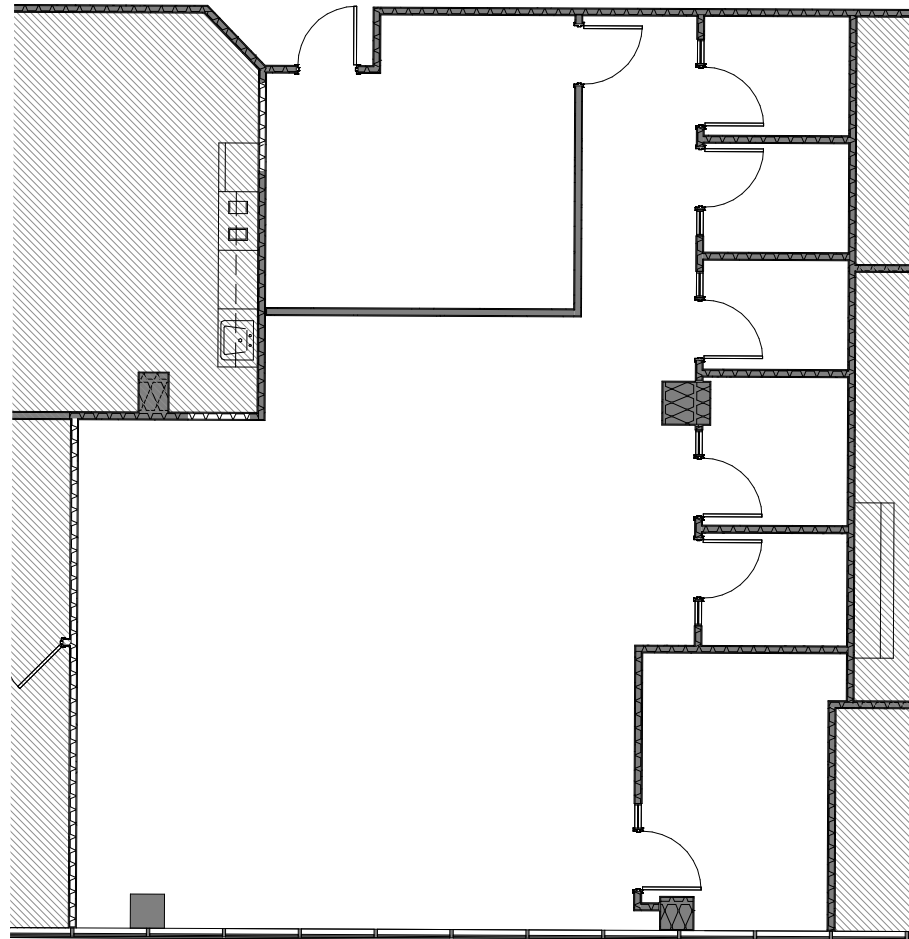
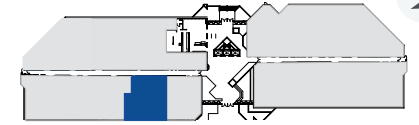
(407) 659.0120 x101 | MCaridi@trpcpre.com

www.trpcpre.com

1st
Floor

Suite 103: 1,894 RSF

NORTH



For more information, contact:

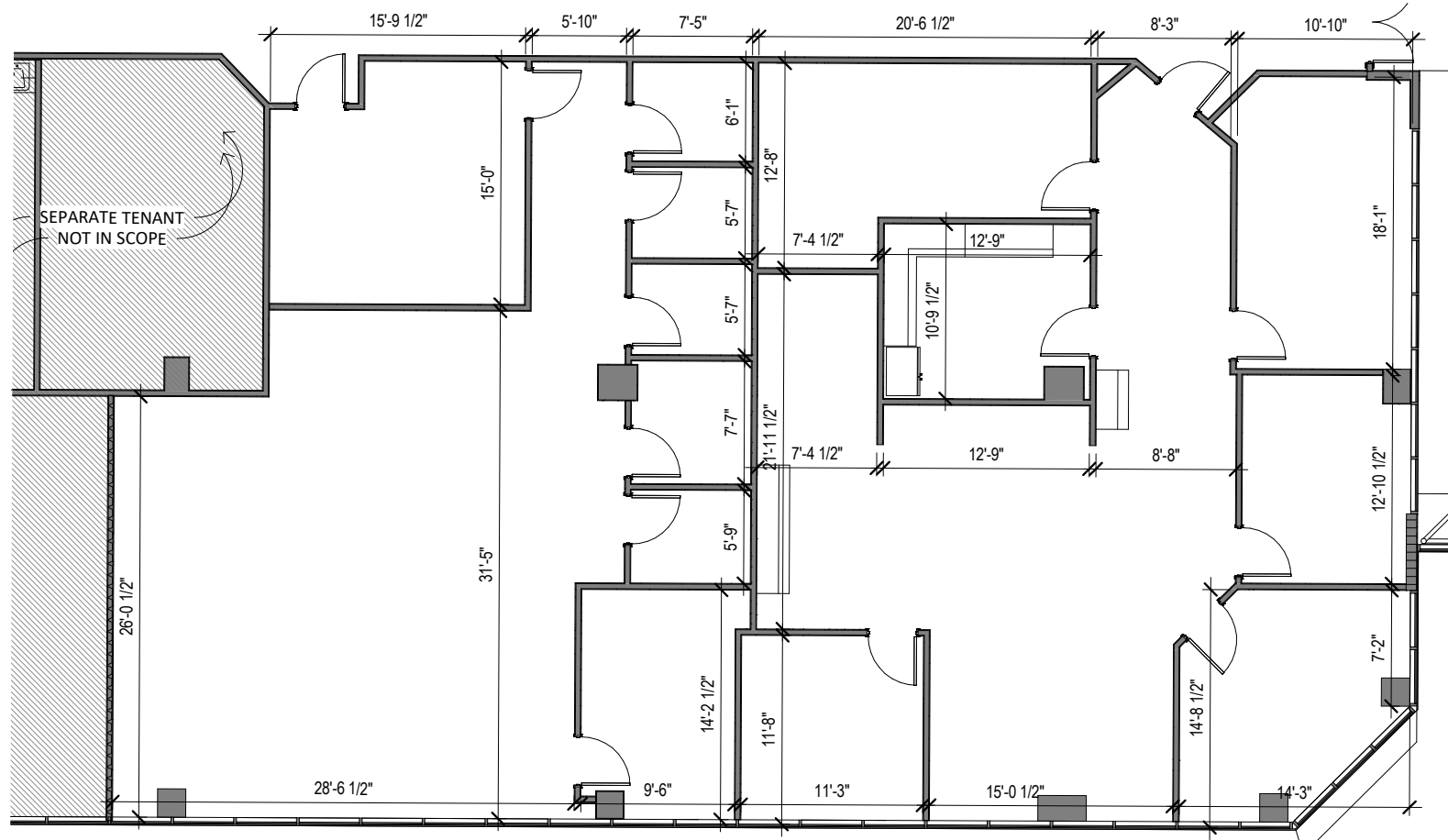
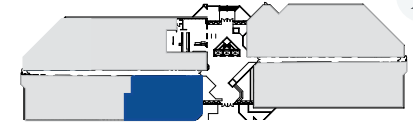
Mike Caridi, CCIM

(407) 659.0120 x101 | MCaridi@trpcpre.com

www.trpcpre.com

1st Floor

Suite 101/103: 4,072 RSF



For more information, contact:

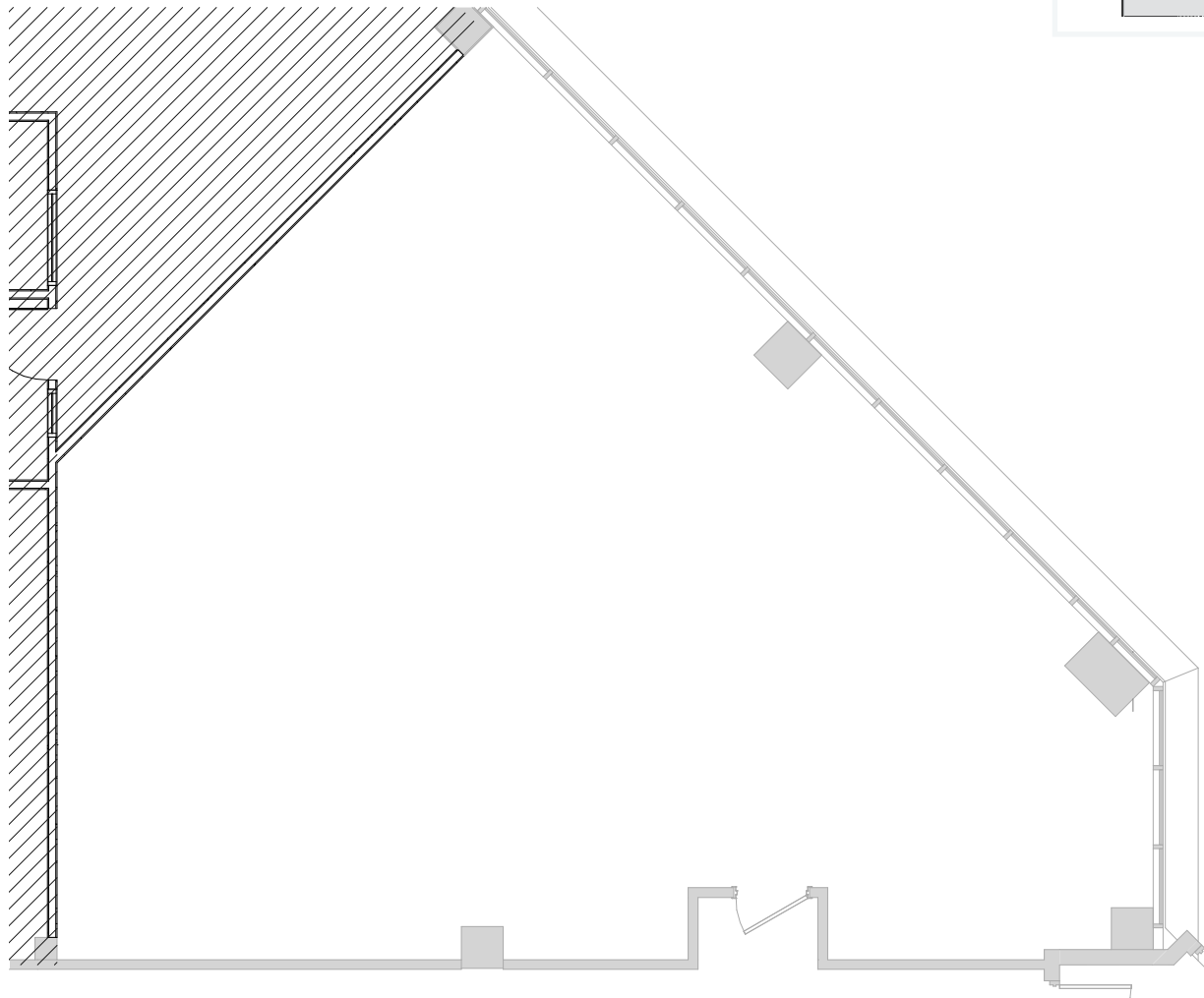
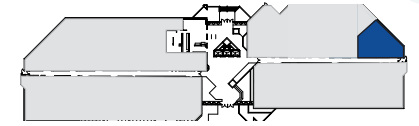
Mike Caridi, CCIM

(407) 659.0120 x101 | MCaridi@trpre.com

www.trpre.com

1st
Floor

Suite 195: 1,576 RSF

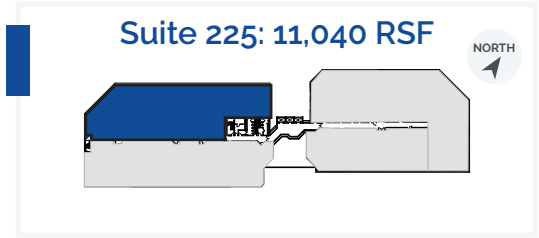
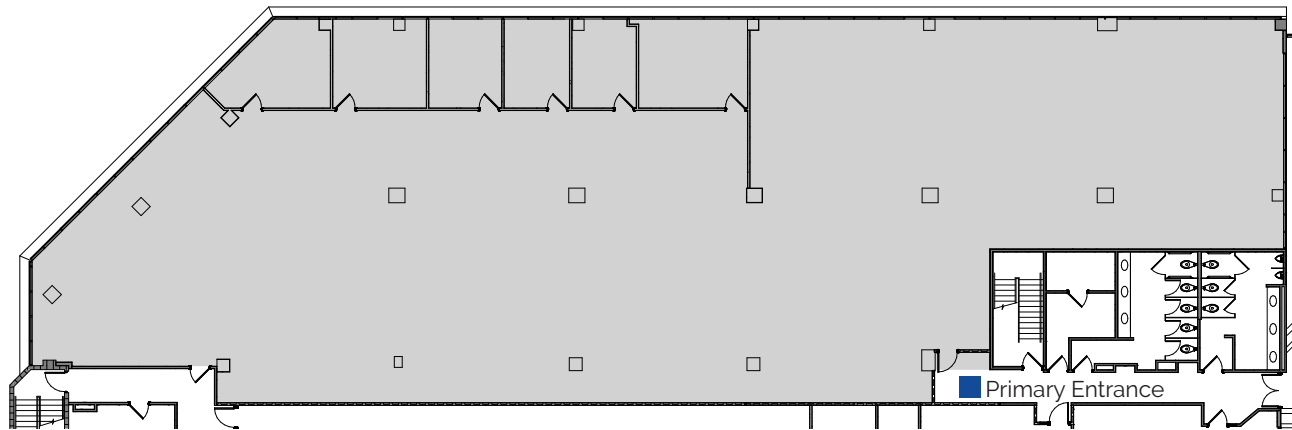


For more information, contact:

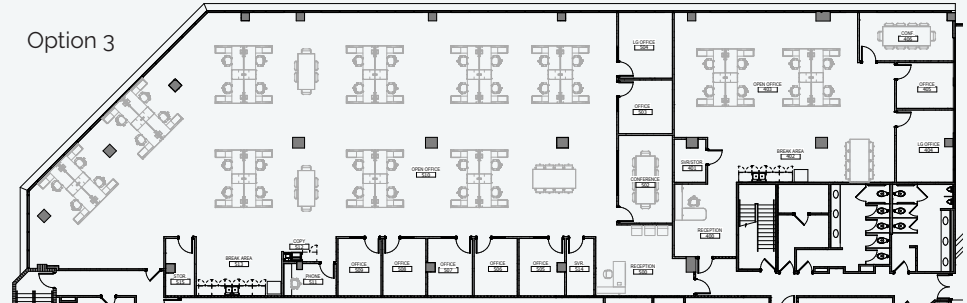
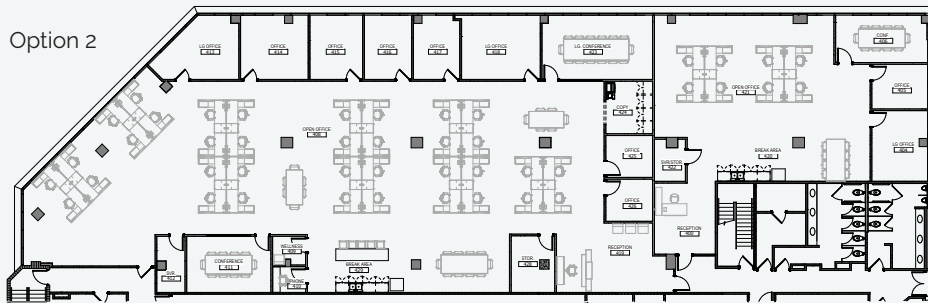
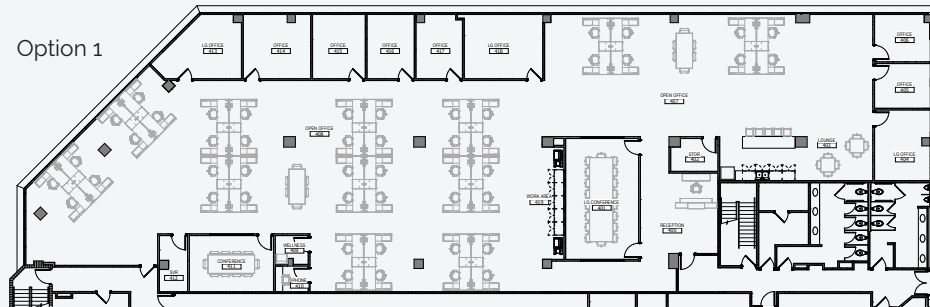
Mike Caridi, CCIM

(407) 659.0120 x101 | MCaridi@trpcre.com

www.trpcre.com



Space Plan Options



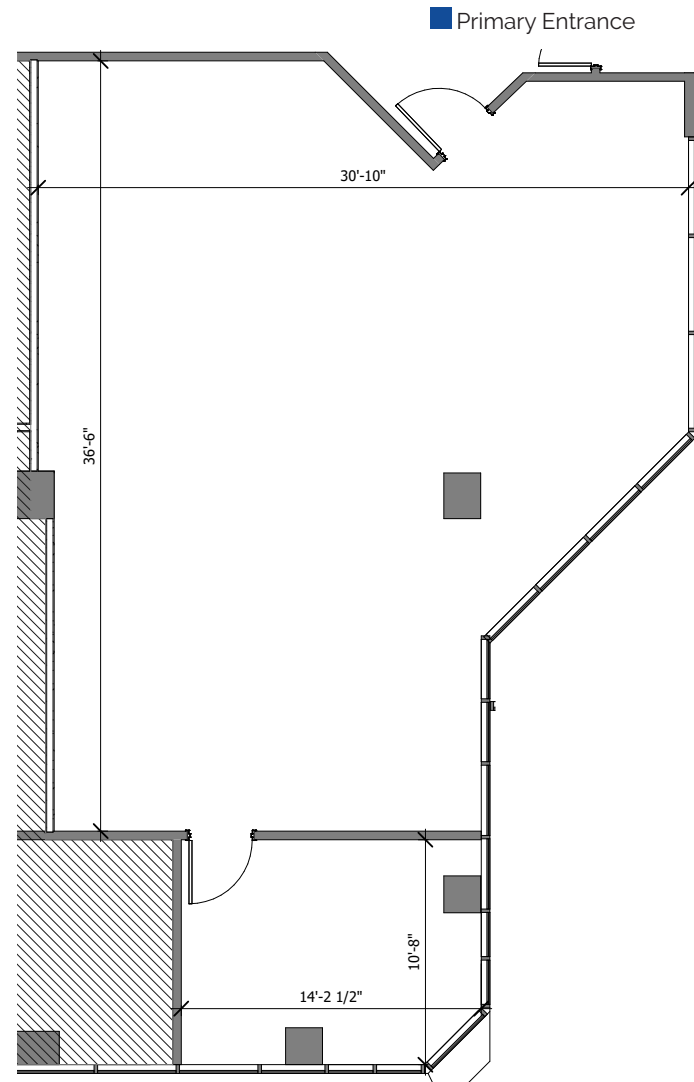
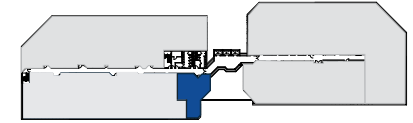
For more information, contact:

Mike Caridi, CCIM

(407) 659.0120 x101 | MCaridi@trpre.com

3rd
Floor

Suite 300: 1,295 RSF

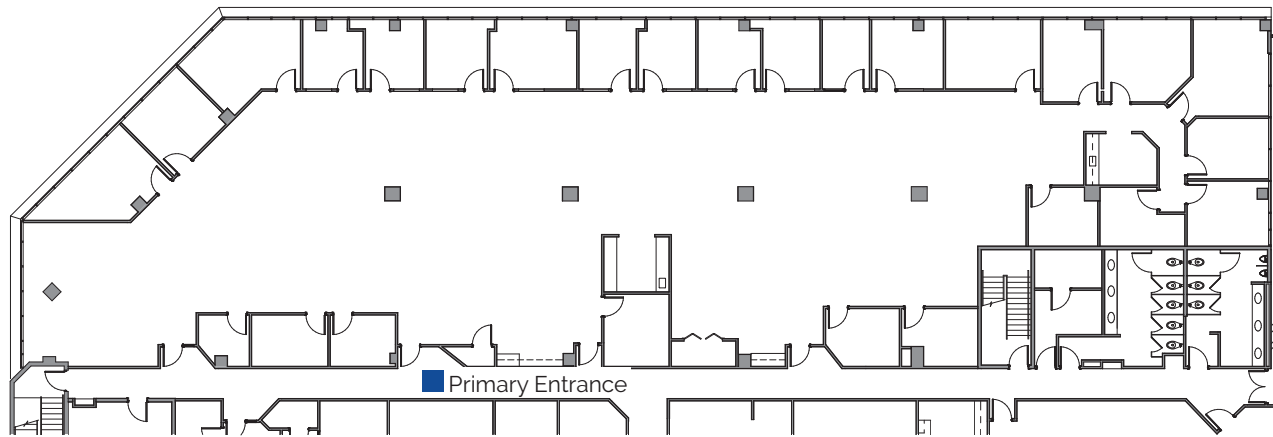


For more information, contact:

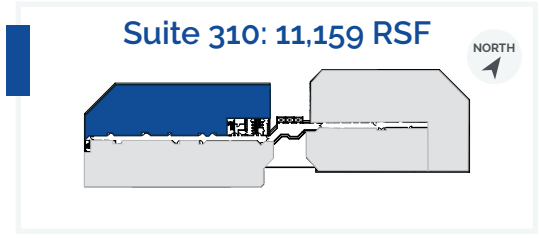
Mike Caridi, CCIM

(407) 659.0120 x101 | MCaridi@trpre.com

www.trpre.com



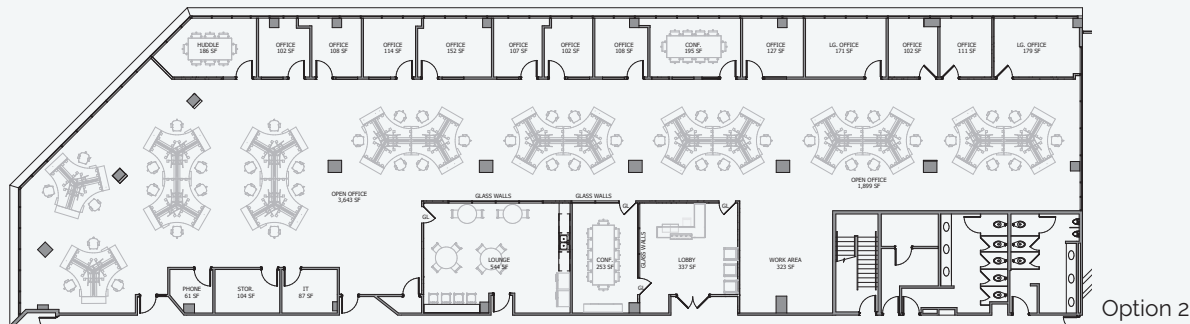
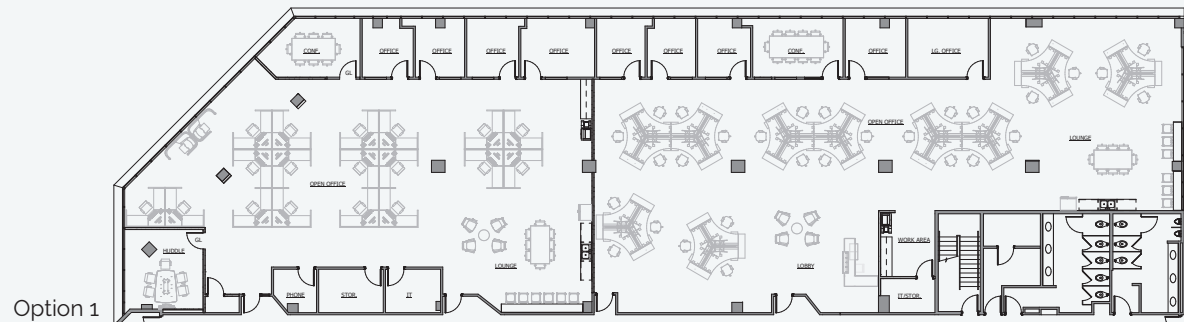
3rd Floor



Suite 310: 11,159 RSF

[Virtual Tour](#)

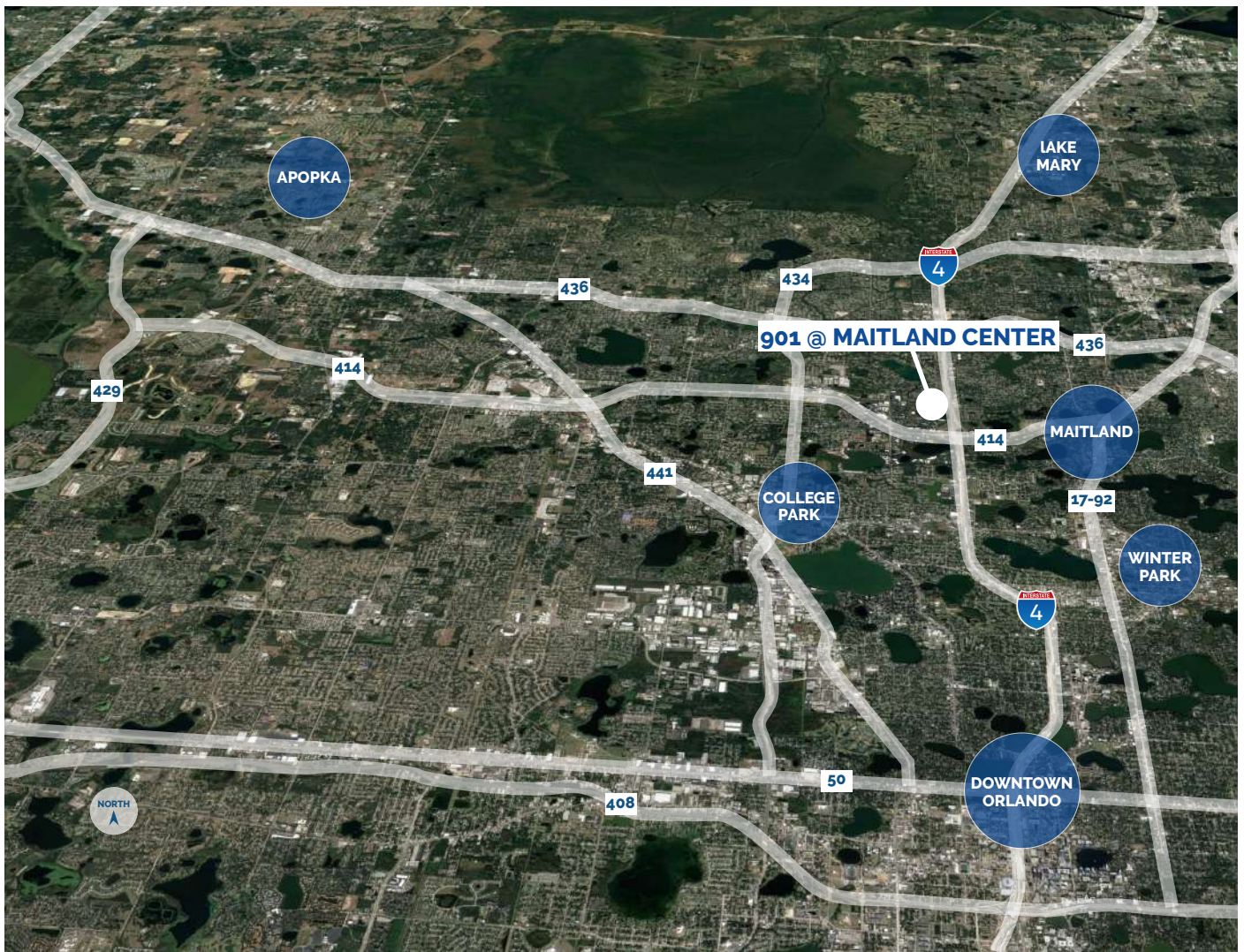
Space Plan Option



For more information, contact:

Mike Caridi, CCIM

(407) 659.0120 x101 | MCaridi@trpre.com



LOCATION HIGHLIGHTS

- ▶ Well-positioned within Maitland Center Office Park, one of Orlando's largest office submarkets
- ▶ Conveniently less than a half mile from I-4 & providing easy access to Downtown Orlando
- ▶ Close to business hotels, restaurants, retail and the RDV Sportsplex
- ▶ Ideally located near Central Florida's top executive housing market & the following established neighborhoods:
 - Maitland: 3-Miles
 - Winter Park: 5-Miles
 - College Park: 7-Miles
 - Downtown: 8-Miles
 - Lake Mary: 12-Miles

For more information, contact:

Mike Caridi, CCIM

(407) 659.0120 x101 | MCaridi@trpcre.com

www.trpcre.com