

# FOR SUBLEASE

## 1681 CLIVEDEN AVENUE

DELTA, BC



**5,242 SF INDUSTRIAL SPACE AVAILABLE**



### **Noah Freedman**

Associate Vice President  
+1 604 833 3274  
noah.freedman@cushwake.com

### **Graham Williams**

Associate  
+1 604 837 1819  
graham.williams@cushwake.com

# FOR SUBLEASE

## 1681 CLIVEDEN AVENUE

DELTA, BC



### BUILDING FEATURES

- Clear Height: **24'**
- 1 dock loading door

### SUBLEASE RATE

\$21.00 PSF

### ADDITIONAL RATE

\$5.66

### OCCUPANCY

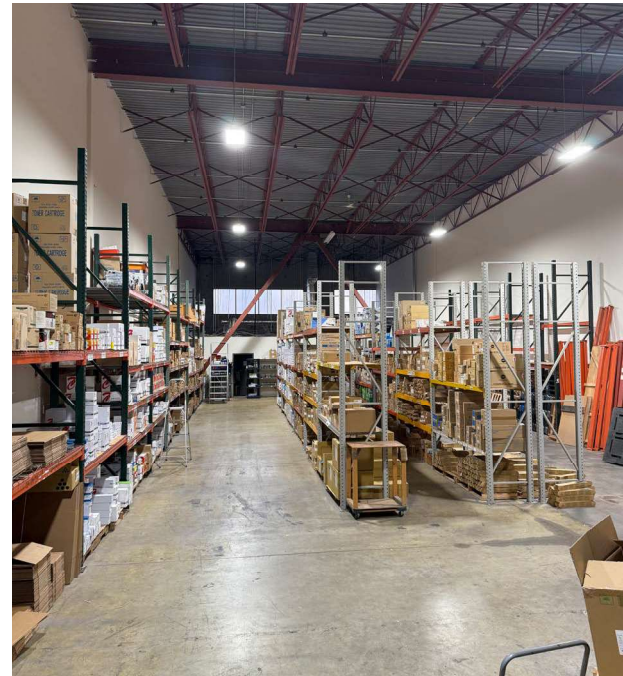
60 days

### EXPIRY

August 31, 2027

### ZONING

I2



### Noah Freedman

Associate Vice President  
+1 604 833 3274  
noah.freedman@cushwake.com

### Graham Williams

Associate  
+1 604 837 1819  
graham.williams@cushwake.com

Suite 1200 - 700 West Georgia Street / PO Box 10023, Pacific Centre / Vancouver, BC V7Y 1A1 / 604 683 3111 / [cushmanwakefield.ca](http://cushmanwakefield.ca)

©2024 Cushman & Wakefield. All rights reserved. The information contained in this communication is strictly confidential. This information has been obtained from sources believed to be reliable but has not been verified. NO WARRANTY OR REPRESENTATION, EXPRESS OR IMPLIED, IS MADE AS TO THE CONDITION OF THE PROPERTY (OR PROPERTIES) REFERENCED HEREIN OR AS TO THE ACCURACY OR COMPLETENESS OF THE INFORMATION CONTAINED HEREIN, AND SAME IS SUBMITTED SUBJECT TO ERRORS, OMISSIONS, CHANGE OF PRICE, RENTAL OR OTHER CONDITIONS, WITHDRAWAL WITHOUT NOTICE, AND TO ANY SPECIAL LISTING CONDITIONS IMPOSED BY THE PROPERTY OWNER(S). ANY PROJECTIONS, OPINIONS OR ESTIMATES ARE SUBJECT TO UNCERTAINTY AND DO NOT SIGNIFY CURRENT OR FUTURE PROPERTY PERFORMANCE.