



±2,600 SF RETAIL/OFFICE BUILDING FOR SALE

210 Hillcrest Drive
Laurens, SC



LEE & ASSOCIATES
COMMERCIAL REAL ESTATE SERVICES

Kevin Bentley, SIOR
EVP/Principal
kbentley@lee-associates.com

Chris Schwab
Vice President
cschwab@lee-associates.com

864.704.1040
LeeGreenville.com

Sale Price:
\$395,000

- Former bank building with drive through and vault
- Visibility with signage opportunities
- ±16 parking spaces
- Near the intersection of Harper Dr. and Hillcrest Dr.



BUILDING SIZE
±2,600 SF



INTERSTATE ACCESS
± 4 MILES TO I-385



LOCATION
LOCATED IN THE
HEART OF LAURENS



VISIBILITY
ON A MAIN STREET
IN LAURENS, SC

PROPERTY OVERVIEW

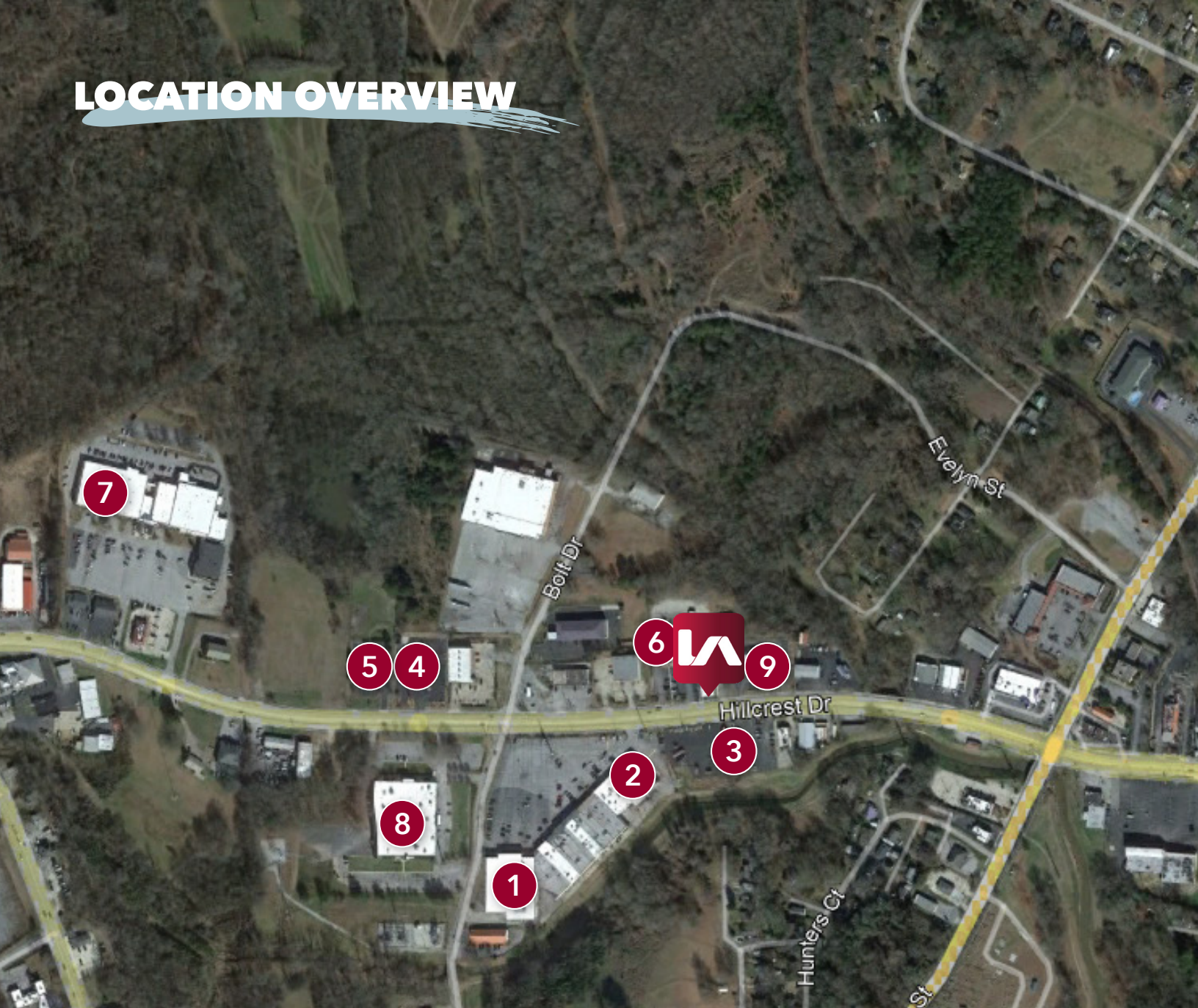
PROPERTY NAME	210 Hillcrest
TYPE	Office/Retail
TOTAL AVAILABLE SF	±2,600 SF
TOTAL BUILDING SF	±2,600 SF
TAX MAP #	906-12-09-007
COUNTY	Laurens
CITY LIMITS	Yes
SIGNAGE	Building

ROAD FRONTAGE	Yes, Hillcrest Drive
PARKING	±16
RESTROOMS	2
CONFERENCE ROOM	1
BREAK ROOM	1
RECEPTION AREA	1
UTILITIES	City
SUBMARKET	Laurens

PROPERTY PHOTOS



LOCATION OVERVIEW



- 1 Roses Express
- 2 Little Ceasar's
- 3 Tokyo Japanese
- 4 Bojangles
- 5 AgSouth Farm Credit
- 6 Whiteford's
- 7 Laurens County Government
- 8 Laurens School District
- 9 South State Bank

INTERIOR PHOTOS





LEARN MORE GIVE US A CALL



LEE & ASSOCIATES
COMMERCIAL REAL ESTATE SERVICES

864.704.1040
LeeGreenville.com

GREENVILLE OFFICE
201 W. McBee Ave, Suite 400
Greenville, SC 29601

SPARTANBURG OFFICE
320 E. Main Street, Suite 430
Spartanburg, SC 29302

All information furnished regarding the properties and information in this packet is from sources deemed reliable, but no warranty or representation is made to the accuracy thereof and same is submitted to errors, omissions, change of price, rental or other conditions prior to sale, lease or financing or withdrawal without notice. No liability of any kind is to be imposed on the broker herein.



Kevin Bentley, SIOR
EVP/Principal
864.444.1196
kbentley@lee-associates.com



Chris Schwab
Vice President
512.968.1252
cschwab@lee-associates.com