



IOS Slot Commitments

3201 Centerpoint Way | Joliet, IL

CenterPoint Intermodal, 10 Acres Available

IOS Slot Commitments

3201 Centerpoint Way
Joliet, IL (Chicago)

* Rail access
within 1 mile

Property Specifications

TOTAL ACREAGE

27

ACRES AVAILABLE

10

TEU CAPACITY

11,000

DAVE FARIS CA License No. 02136032
253.906.5221 | dave.faris@srsre.com

RICHARD SCHWARTZ, SIOR CA License No. 01712680
714.943.1609 | richard.schwartz@srsre.com



Operational Capabilities

- Reefer Pre-Trip Available
- Chassis M&R On-Site
- Container M&R On-Site
- Mobile M&R Truck Support
- Small-Scale Modifications / Customization Available
- Immediate Proximity to Major Intermodal Rail Facilities
- Finish Vehicle Options (Parking/Uplifting)
- IOS Capabilities

Corporate Neighbors


Warehouse


Warehouse

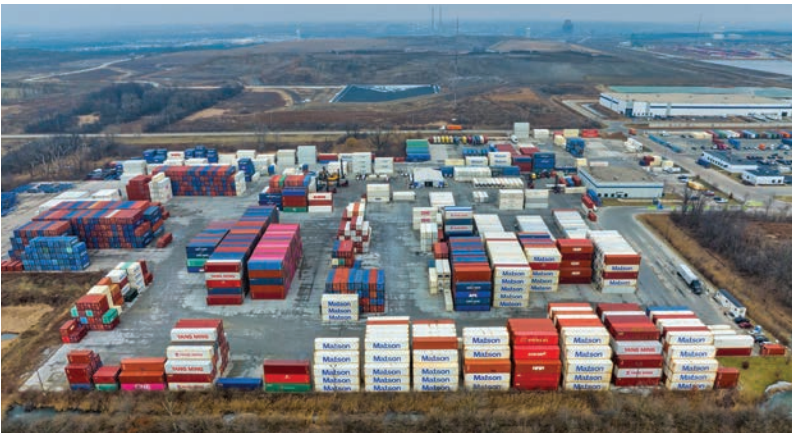

Warehouse


Warehouse


Saddle Creek
LOGISTICS SERVICES









SITE

PRIME SOURCE
BUILDING PRODUCTS, INC.

HAVOC
motorsport

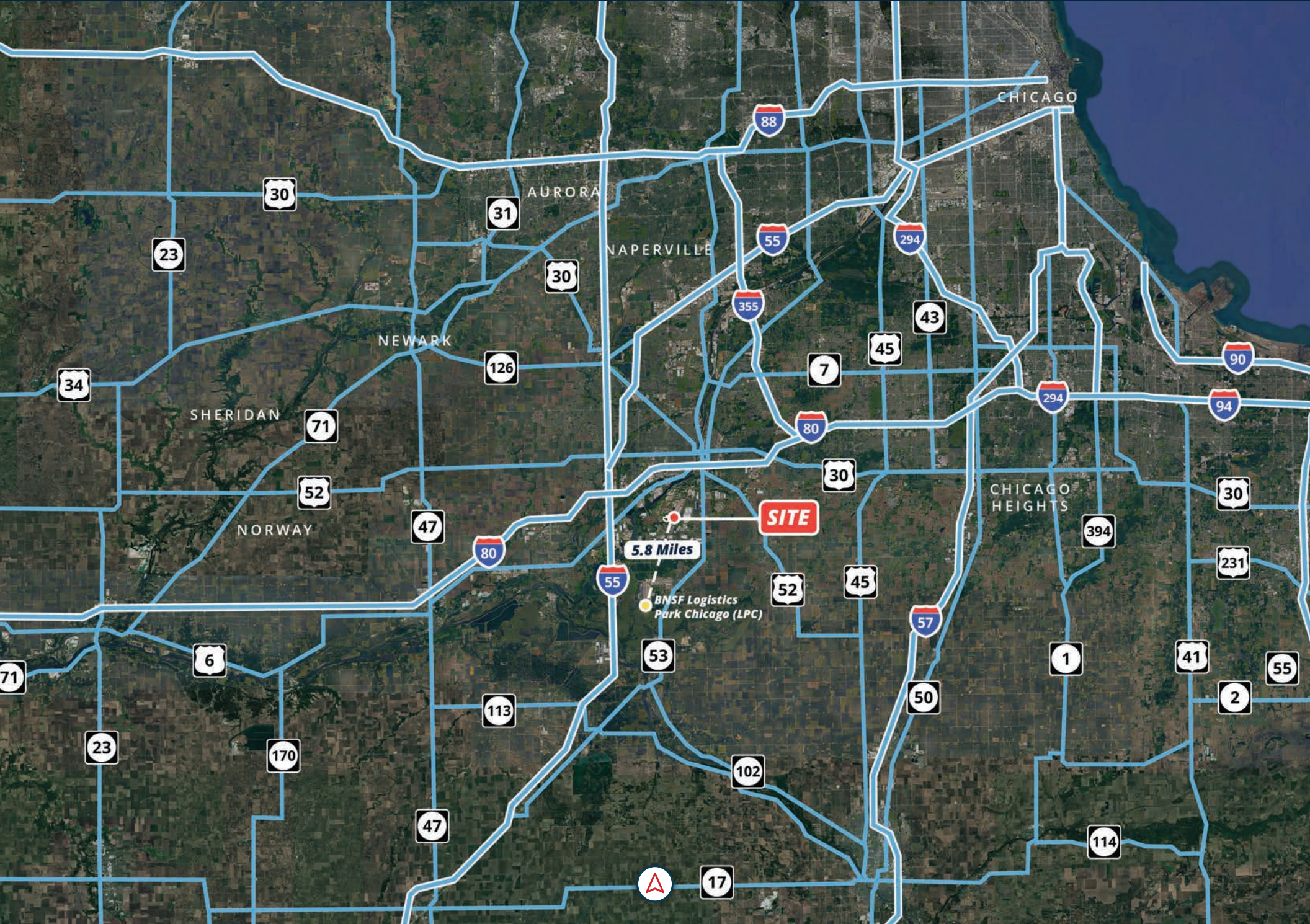
W SCHWEIZER RD

CENTERPOINT WAY

RAIL ROAD









About Elwood, IL

Elwood, Illinois is a premier inland logistics location that is anchored by the CenterPoint Intermodal Center (CIC), one of the largest intermodal hubs in North America. Situated southwest of Chicago, Elwood offers immediate access to I-55 and proximity to I-80, enabling efficient distribution throughout the Chicago metro area and across national freight corridors. The area's extensive heavy-industrial zoning, large-scale master-planned logistics parks, and direct rail connectivity make Elwood an ideal location for intermodal support operations, container depots, and industrial outdoor storage facilities.

Demand fundamentals in Elwood are driven by Chicago's position as the nation's largest rail hub and a critical nexus for east-west and north-south freight movement. High intermodal throughput at the CenterPoint facility, combined with dense regional distribution activity, continues to support strong demand for nearby container storage, chassis management, and terminal-adjacent yard space.

This dynamic makes the site well suited for a structured surplus-capacity program where ConGlobal can monetize defined areas while retaining operating flexibility.

WHY ELWOOD?

Anchored by the CenterPoint Intermodal Center, Elwood supports high-volume intermodal and container activity.



SRS REAL ESTATE PARTNERS

680 Newport Center Drive, Suite 300
Newport Beach, CA 92660

DAVE FARIS

CA License No. 02136032
253.906.5221 | dave.faris@srsre.com

RICHARD SCHWARTZ, SIOR

CA License No. 01712680
714.943.1609 | richard.schwartz@srsre.com

Broker of Record: Daniel Elliot, IL License No. 481011415, SRS Real Estate Partners, Midwest, LLC

[SRSRE.COM/Industrial](https://www.srsre.com/Industrial)

©2026 SRS. All Rights Reserved.

The information presented was obtained from sources deemed reliable;
however SRS does not guarantee its completeness or accuracy.