

FOR LEASE

RETAIL / MIXED USE @ TERRENA APARTMENT HOMES
19600 PLUMMER ST | NORTHRIDGE, CA 91324-2407



BRETT MERO

CALDRE #01190225
818.380.9970
BRETT@CBM1.COM

DAVE O'CONNELL

CALDRE #01398651
818.380.9967
DAVE@CBM1.COM

CBM1.COM

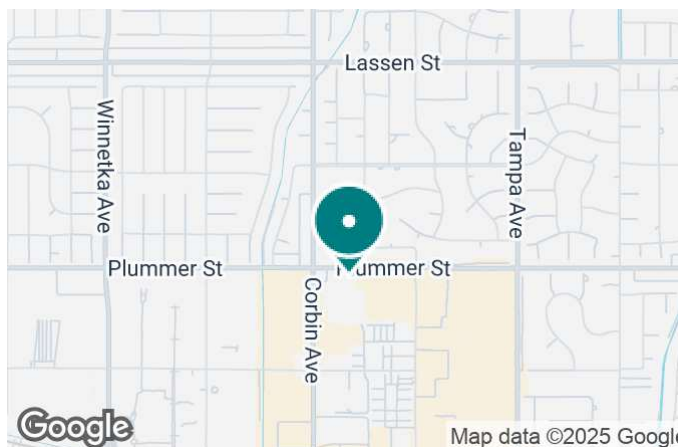
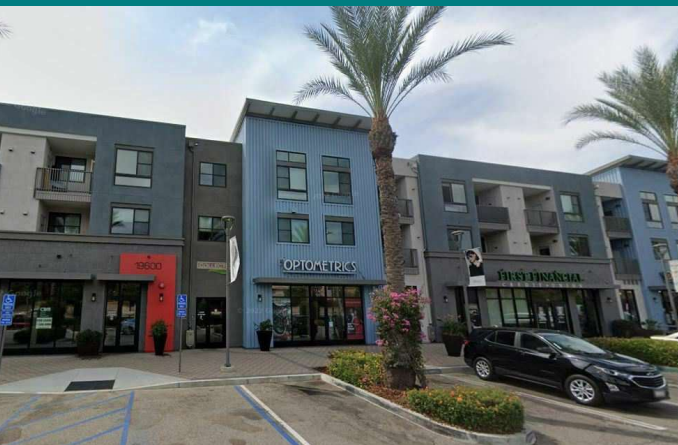
CBM1

LEASING
BROKERAGE
INVESTMENTS

FEATURES & AMENITIES

RETAIL / MIXED USE @ TERRENA APARTMENT HOMES | 19600 PLUMMER ST, NORTHRIDGE, CA 91324-2407

BROCHURE | PAGE 2



FEATURES & AMENITIES

- ±1,409 + ±3,733 SF Units Available
- Join The Stand Restaurant, Optometrics, First Financial Credit Union, and Boba Time
- Newer Development with Outstanding Curb Appeal
- Mixed-Use Property with over 400 High-end Residential Units & First Class Retail Units
- Ample Retail Parking in Dedicated On-Grade Lot
- Situated Adjacent to Plaza Di Northridge & Northridge FashionCenter, in Addition to Countless Major A+ National & Regional Retailers
- Strong Area Population & Income Demographics
- Outstanding Daytime Population Counts
- Built-in Desirable Customer Base

NEIGHBORING RETAILERS



DEMOGRAPHICS	1 MILE	3 MILES	5 MILES
Total Households	4,188	63,613	153,730
Total Population	12,685	195,615	466,899
Average HH Income	\$105,227	\$82,327	\$81,845

EXCLUSIVELY REPRESENTED BY

BRETT MERO

CALDRE #01190225

818.380.9970

BRETT@CBM1.COM

DAVE O'CONNELL

CALDRE #01398651

818.380.9967

DAVE@CBM1.COM

PROPERTY SUMMARY

RETAIL / MIXED USE @ TERRENA APARTMENT HOMES | 19600 PLUMMER ST, NORTHRIDGE, CA 91324-2407

BROCHURE | PAGE 3



PROPERTY DESCRIPTION

Two ground-floor retail units available in a mixed-use development. Located in the Collection at Terrena, an upscale apartment home community with approximately 400 apartment units, dog parks, extensive gardens, and outdoor communal areas. Two units available. The development's high-end retail units offer dedicated onsite parking, direct access, and high-street visibility.

LOCATION DESCRIPTION

Situated at the intersection of Plummer + Corbin in prime Northridge, CA. Superbly located in a highly active retail trade area, close to the Northridge Mall, Super King Market, and numerous A+ tenants. Easily accessible from several major area thoroughfares.

OFFERING SUMMARY

Lease Rate:	\$3.50 SF/month (NNN)
Available SF:	1,409 - 3,372 SF
Building Size:	1,409 SF

SPACES	LEASE RATE	SPACE SIZE
H	\$3.50 SF/month	1,409 SF
K	\$3.50 SF/month	3,372 SF

BRETT MERO

CALDRE #01190225

818.380.9970

BRETT@CBM1.COM

DAVE O'CONNELL

CalDRE #01398651

818.380.9967

DAVE@CBM1.COM

SITE PHOTOS

RETAIL / MIXED USE @ TERRENA APARTMENT HOMES | 19600 PLUMMER ST, NORTHRIDGE, CA 91324-2407

BROCHURE | PAGE 4



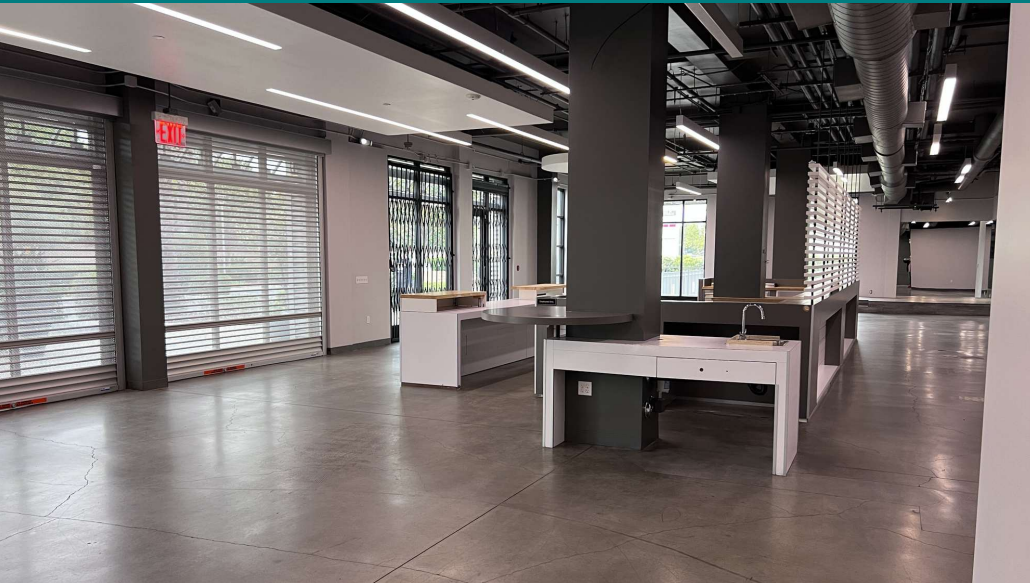
BRETT MERO
CALDRE #01190225
818.380.9970
BRETT@CBM1.COM

DAVE O'CONNELL
CALDRE #01398651
818.380.9967
DAVE@CBM1.COM

INTERIOR PHOTOS

RETAIL / MIXED USE @ TERRENA APARTMENT HOMES | 19600 PLUMMER ST, NORTHRIDGE, CA 91324-2407

BROCHURE | PAGE 5



BRETT MERO
CALDRE #01190225
818.380.9970
BRETT@CBM1.COM

DAVE O'CONNELL
CALDRE #01398651
818.380.9967
DAVE@CBM1.COM

SITE PLANS

RETAIL / MIXED USE @ TERRENA APARTMENT HOMES | 19600 PLUMMER ST, NORTHRIDGE, CA 91324-2407

BROCHURE | PAGE 6



BRETT MERO
 CALDRE #01190225
 818.380.9970
 BRETT@CBM1.COM

DAVE O'CONNELL
 CALDRE #01398651
 818.380.9967
 DAVE@CBM1.COM

RETAILER MAP

RETAIL / MIXED USE @ TERRENA APARTMENT HOMES | 19600 PLUMMER ST, NORTHRIDGE, CA 91324-2407

BROCHURE | PAGE 7



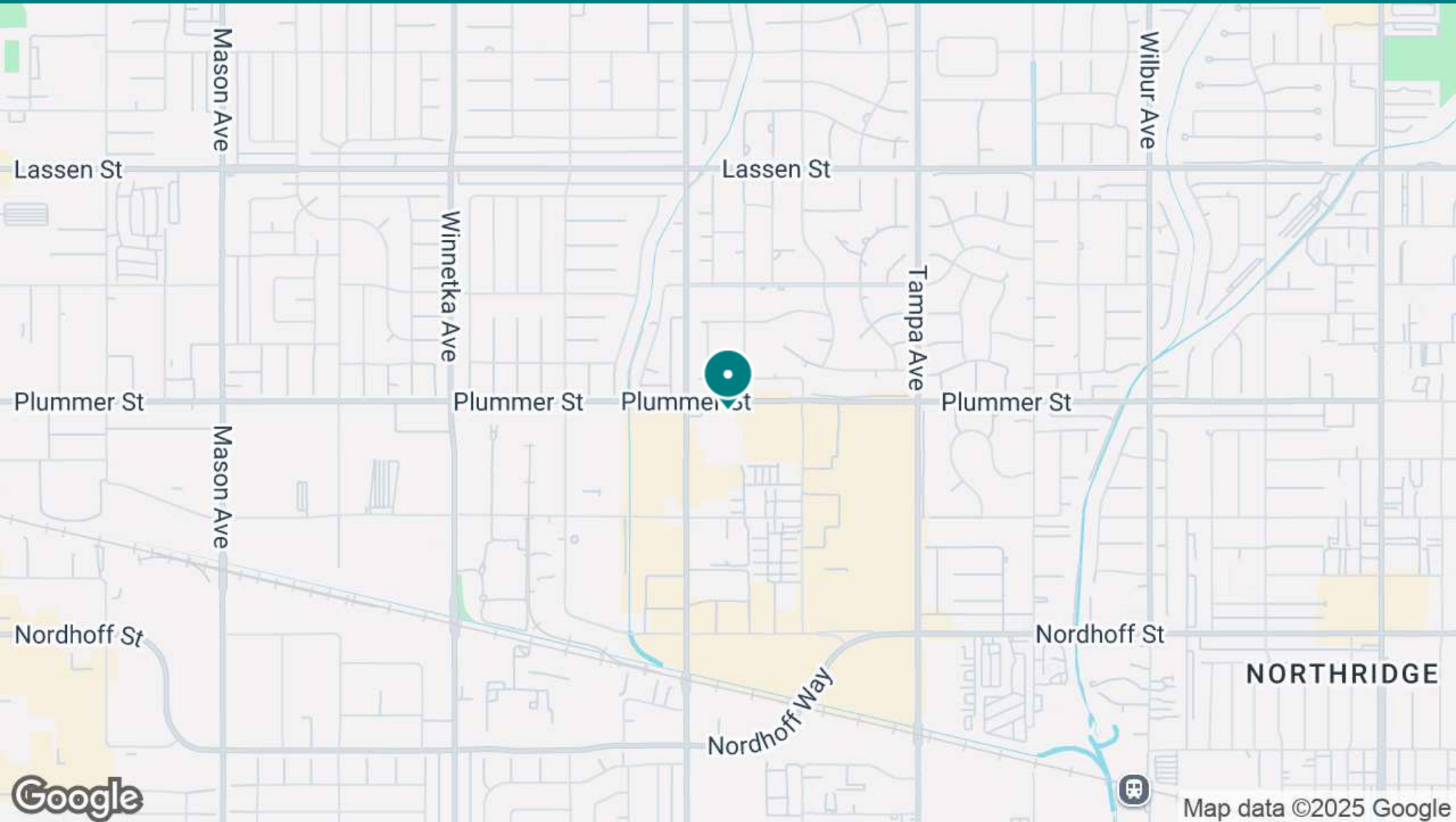
BRETT MERO
CALDRE #01190225
818.380.9970
BRETT@CBM1.COM

DAVE O'CONNELL
CALDRE #01398651
818.380.9967
DAVE@CBM1.COM

LOCATION MAP

RETAIL / MIXED USE @ TERRENA APARTMENT HOMES | 19600 PLUMMER ST, NORTHRIDGE, CA 91324-2407

BROCHURE | PAGE 8



BRETT MERO
CALDRE #01190225
818.380.9970
BRETT@CBM1.COM

DAVE O'CONNELL
CALDRE #01398651
818.380.9967
DAVE@CBM1.COM

DEMOGRAPHICS MAP & REPORT

RETAIL / MIXED USE @ TERRENA APARTMENT HOMES | 19600 PLUMMER ST, NORTHRIDGE, CA 91324-2407

BROCHURE | PAGE 9

POPULATION	1 MILE	3 MILES	5 MILES
Total Population	12,685	195,615	466,899
Average Age	42.8	35.8	36.5
Average Age (Male)	40.8	34.8	35.3
Average Age (Female)	44.2	36.8	37.8

HOUSEHOLDS & INCOME	1 MILE	3 MILES	5 MILES
Total Households	4,188	63,613	153,730
# of Persons per HH	3.0	3.1	3.0
Average HH Income	\$105,227	\$82,327	\$81,845
Average House Value	\$546,688	\$546,201	\$563,967

ETHNICITY (%)	1 MILE	3 MILES	5 MILES
Hispanic	29.0%	37.0%	36.8%

RACE	1 MILE	3 MILES	5 MILES
% White	60.5%	51.4%	54.5%
% Black	4.1%	5.1%	4.3%
% Asian	16.2%	18.1%	16.5%
% Hawaiian	0.1%	0.3%	0.2%
% American Indian	0.2%	0.3%	0.3%
% Other	13.4%	21.4%	20.8%

2020 American Community Survey (ACS)

BRETT MERO

CALDRE #01190225

818.380.9970

BRETT@CBM1.COM

DAVE O'CONNELL

CalDRE #01398651

818.380.9967

DAVE@CBM1.COM

