



**FOR LEASE**

## Rogers Plaza

**950 28TH ST SW # 1150  
WYOMING, MI 49509**

Rogers Plaza is located on 28th St. in Wyoming, Michigan, the thriving the premier retail hub of Wyoming experiences traffic counts in excess of 56,000 cars per day, providing retailers exceptional brand exposure. Rogers Plaza is a prominent retail destination in the Greater Grand Rapids area, offering a wide range of shopping, dining, and entertainment options. The plaza features a mix of national chains, local boutiques, restaurants, and service providers, catering to the diverse needs of its visitors.

As the first enclosed shopping mall in Michigan, Rogers Plaza has been serving Western Michigan shoppers since 1961. Now one of the fastest growing cities in Michigan, Wyoming and Rogers Plaza continue to evolve to meet the changing needs of consumers and the community. Beyond shopping, Rogers Plaza serves as a community gathering place where residents come together to shop, dine, and socialize. The plaza often hosts events, promotions, and activities that engage local residents and foster a sense of community.



Building Sq Ft	365,572 SqFt
Lot Size (acres)	29.56
Parcel ID	41-17-14-201-016



- ❖ Premier Location in Fastest Growing Metro Area of Michigan
- ❖ Anchored by Ross Dress for Less (top quartile Michigan, Placer.ai), Auto Zone (99% Michigan, Placer.ai), and Citi Trends (#1 Michigan, Placer.ai)
- ❖ High-performing intersection with traffic totals over 56,000 vehicles per day
- ❖ 5-Mile Population over 280,000
- ❖ Signage Opportunities Directly on 28th Street.
- ❖ Anchor Space Available with Interior Mall & Exterior Entrances
- ❖ Interior Mall Space Available
- ❖ Six Ingress/Egress points, Including Signalized
- ❖ Over 1,6000 SF of frontage on highly sought after 28th Street

**SPIGEL  
PROPERTIES**

INVESTMENTS • REAL ESTATE

70 N.E. LOOP 410, SUITE 185  
SAN ANTONIO, TEXAS 78216



**CATHERINE MOROSCHAN**  
Regional Property Manager

Direct: 947-941-1908  
catherine@spigelproperties.com

FOR LEASE

Rogers Plaza  
950 28TH ST SW # 1150  
WYOMING, MI 49509



SPACE	SPACE USE	LEASE RATE	LEASE TYPE	SIZE(SF)	TERM
#1063	Retail	\$ 12.00 SF/Yr	NNN	6,040 SF	Negotiable
#982	Retail	\$ 12.00 SF/Yr	NNN	1,020 SF	Negotiable
#1012	Retail	\$ 12.00 SF/Yr	NNN	3,728 SF	Negotiable
#1010	Retail	\$ 12.00 SF/Yr	NNN	2,700 SF	Negotiable
#996	Retail	\$ 14.00 SF/Yr	NNN	2,040 SF	Negotiable
#1004	Retail	\$ 10.00 SF/Yr	NNN	1,013 SF	Negotiable

**SPIGEL  
PROPERTIES**

INVESTMENTS • REAL ESTATE

70 N.E. LOOP 410, SUITE 185  
SAN ANTONIO, TEXAS 78216



**CATHERINE MOROSCHAN**  
Regional Property Manager

Direct: 947-941-1908  
catherine@spigelproperties.com

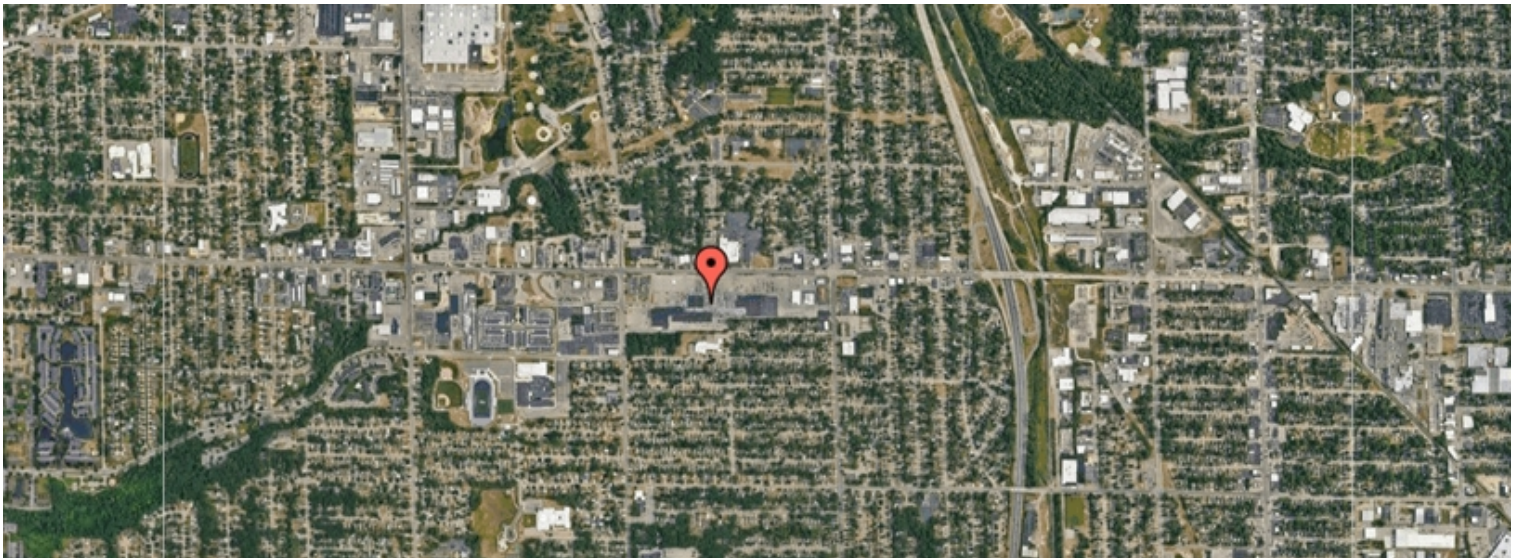
**FOR LEASE**

**Rogers Plaza**  
**950 28TH ST SW # 1150**  
**WYOMING, MI 49509**

POPULATION	1 MILE	3 MILE	5 MILE
2000 Population	13,763	107,328	263,789
2010 Population	13,681	101,384	257,125
2022 Population	14,880	107,893	280,661
2027 Population	15,192	108,500	283,699
2022-2027 Growth Rate	0.42 %	0.11 %	0.22 %
2022 Daytime Population	14,339	104,326	302,751

2022 HOUSEHOLD INCOME	1 MILE	3 MILE	5 MILE
less than \$15000	523	3,411	9,661
\$15000-24999	499	3,642	9,382
\$25000-34999	701	4,207	9,976
\$35000-49999	718	6,361	15,143
\$50000-74999	1,280	8,920	22,992
\$75000-99999	989	6,190	15,759
\$100000-149999	695	4,415	15,944
\$150000-199999	34	866	5,137
\$200000 or greater	76	641	4,714
Median HH Income	\$ 54,262	\$ 53,205	\$ 58,572
Average HH Income	\$ 65,404	\$ 66,945	\$ 80,325

HOUSEHOLDS	1 MILE	3 MILE	5 MILE
2000 Total Households	5,346	37,911	98,581
2010 Total Households	5,103	35,784	97,228
2022 Total Households	5,514	38,654	108,707
2027 Total Households	5,629	38,947	110,206
2022 Average Household Size	2.64	2.77	2.55
2022 Owner Occupied Housing	3,533	23,514	63,773
2027 Owner Occupied Housing	3,693	24,171	65,872
2022 Renter Occupied Housing	1,981	15,140	44,934
2027 Renter Occupied Housing	1,936	14,776	44,334
2022 Vacant Housing	145	1,677	6,591
2022 Total Housing	5,659	40,331	115,298



**SPIGEL**  
**PROPERTIES**

INVESTMENTS • REAL ESTATE

70 N.E. LOOP 410, SUITE 185  
SAN ANTONIO, TEXAS 78216

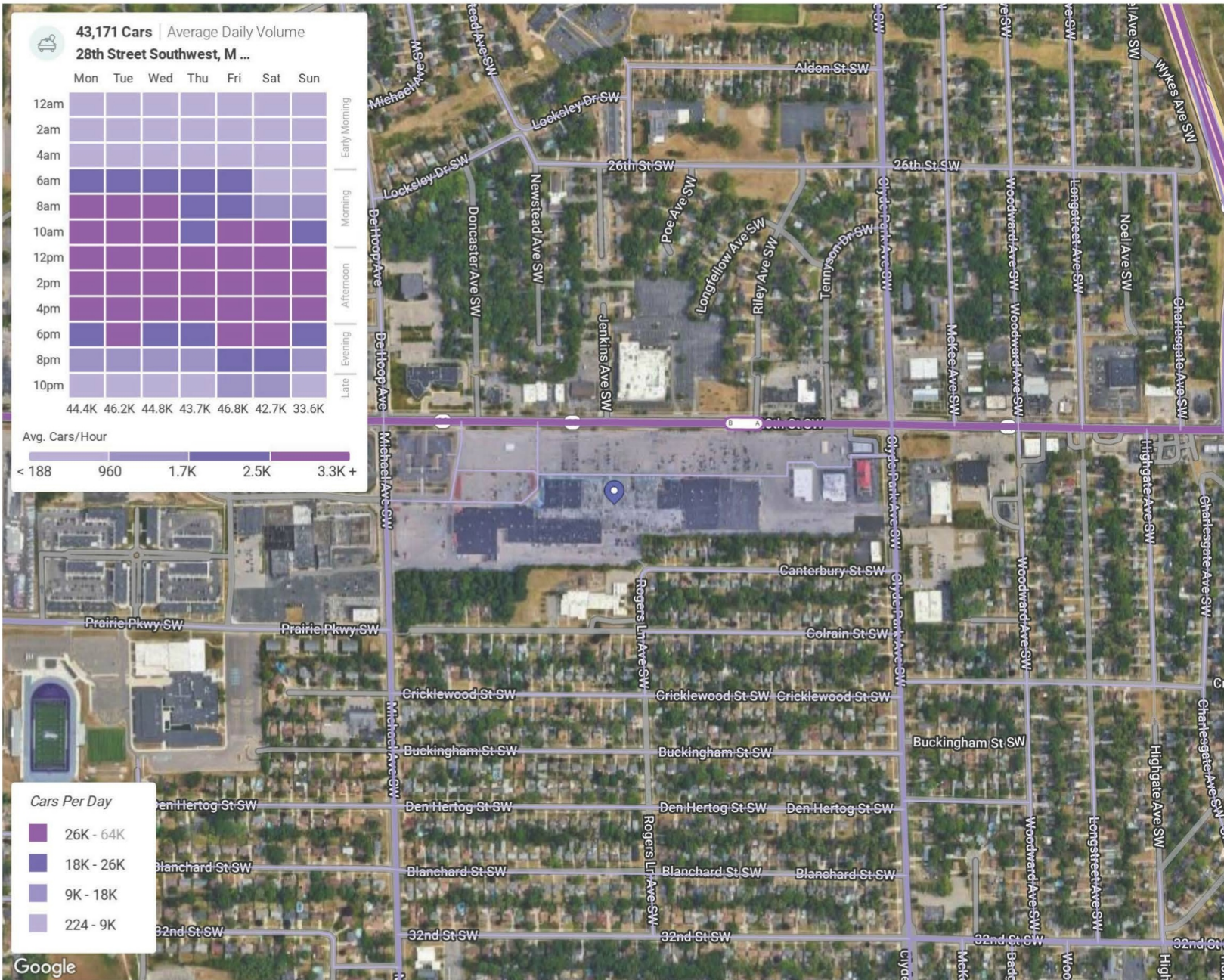


**CATHERINE MOROSCHAN**  
Regional Property Manager

Direct: 947-941-1908  
catherine@spigelproperties.com

FOR LEASE

Rogers Plaza  
950 28TH ST SW # 1150  
WYOMING, MI 49509



May 1st, 2022 - Apr 30th, 2023  
Data provided by Placer Labs Inc. (www.placer.ai)



**SPIGEL  
PROPERTIES**

INVESTMENTS • REAL ESTATE

70 N.E. LOOP 410, SUITE 185  
SAN ANTONIO, TEXAS 78216



**CATHERINE MOROSCHAN**  
Regional Property Manager

Direct: 947-941-1908  
catherine@spigelproperties.com

FOR LEASE

Rogers Plaza  
950 28TH ST SW # 1150  
WYOMING, MI 49509



## ABOUT WYOMING

Wyoming is a city in Kent County in the U.S. state of Michigan. The population was 76,501 according to the 2020 census. Wyoming is the second most-populated community in the Grand Rapids metropolitan area (1,091,620 total pop.) and is bordered by Grand Rapids on the northeast.



### CITY OF WYOMING

#### AREA

CITY	24.9 SQ MI
LAND	24.7 SQ MI
WATER	0.2 SQ MI
ELEVATION	643 FT

#### POPULATION

POPULATION	76,501
DENSITY	3,092.07 SQ MI

**SPIGEL  
PROPERTIES**

INVESTMENTS • REAL ESTATE

70 N.E. LOOP 410, SUITE 185  
SAN ANTONIO, TEXAS 78216



**CATHERINE MOROSCHAN**  
Regional Property Manager  
  
Direct: 947-941-1908  
catherine@spigelproperties.com