

# For Sublease 190 MIDDLE STREET | PORTLAND, ME

# OLD PORT SQ.



## Premier Office Space In the Heart of Portland

Formerly known as Three Canal Plaza, this 10,502± SF class A office space is centrally located to the waterfront and downtown areas. With renovations on the way, the first and second levels will be transformed into premier retail.



**EAST  
BROWN  
COW™**



**Joe Malone, CCIM**

**D** 207.773.2554

**C** 207.233.8000

Joe@malonecb.com



# Property Information

## 190 MIDDLE STREET | PORTLAND, ME

OLD  
PORT  
SQ.



<b>Owner:</b>	Cow Plaza 3 LLC
<b>Property Management:</b>	East Brown Cow
<b>Lot Size:</b>	0.556± AC
<b>Building Size:</b>	65,162± SF
<b>Available Space:</b>	10,502± SF
<b>Exterior:</b>	Brick and steel
<b>Elevator:</b>	2 passenger
<b>Sprinkler:</b>	Yes
<b>Electricity:</b>	3-phase, 208 volts

<b>HVAC:</b>	Gas boilers with perimeter hydronic baseboard
<b>Signage:</b>	Building sign and pylon throughout the site
<b>Storage:</b>	Available for lease with spaces (contact Broker for details)
<b>Parking:</b>	Spaces available for lease at Landlord's adjacent garage
<b>Zoning:</b>	B-3 Downtown Business
<b>Lease Rate:</b>	\$23.56/SF MG

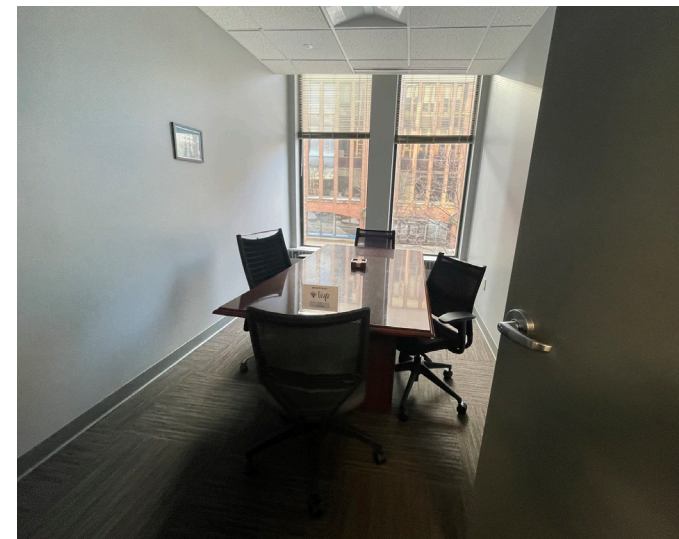
Old Port Square is a premier business address within the heart of downtown Portland. Surrounded by key civic institutions, including the U.S. District Court, Cumberland County Courthouse, and City Hall, it's a top location for the region's leading legal, financial, and professional firms. Tenants benefit from a central, walkable environment, close to popular coffee and lunch spots, along with the convenience of leasing parking at the nearby Old Port Square Garage.





# Photos 190 MIDDLE STREET | PORTLAND, ME

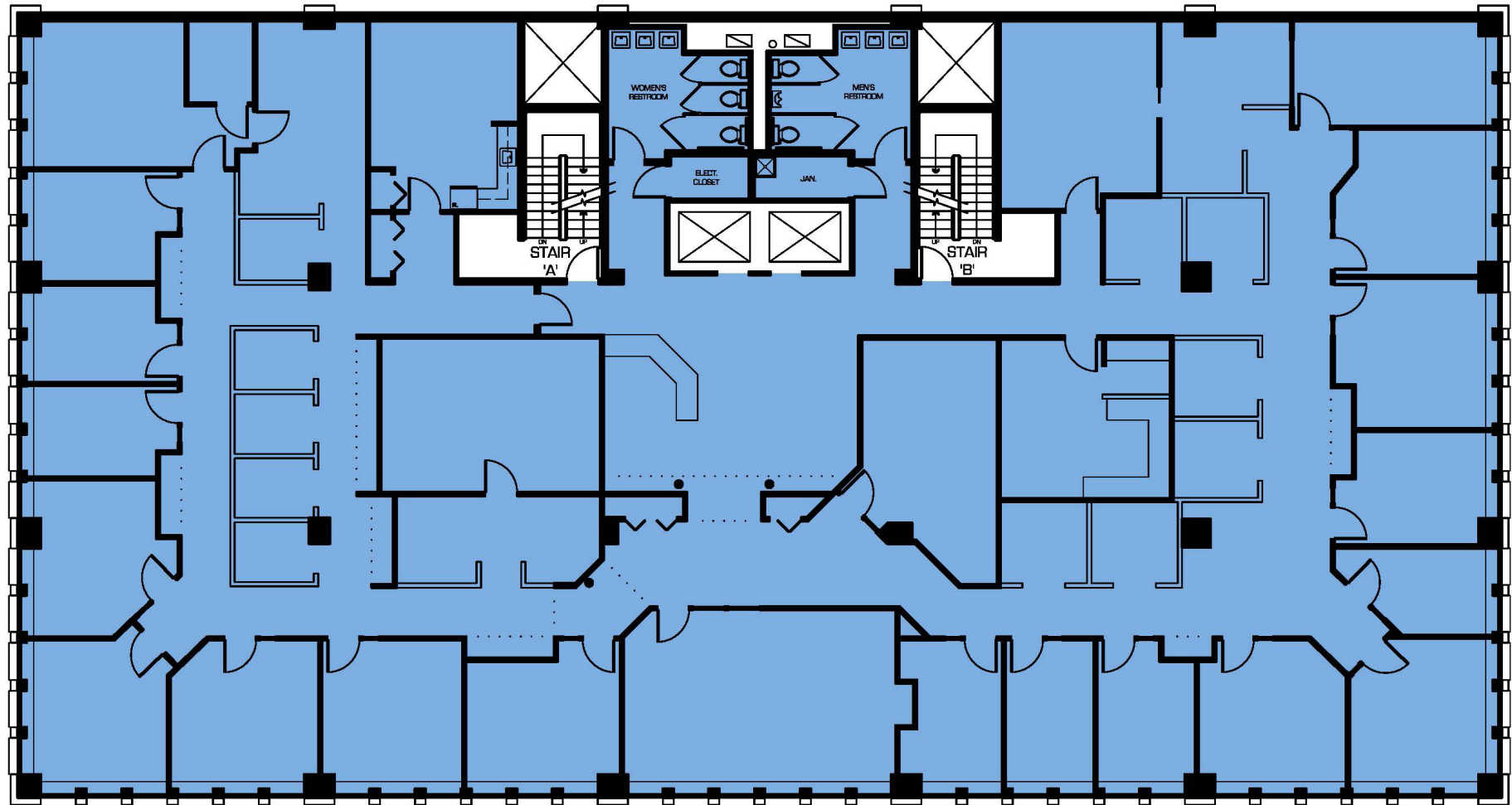
OLD  
PORT  
SQ.



# Floor Plan

## 190 MIDDLE STREET | PORTLAND, ME

OLD  
PORT  
SQ.





# The Vision

OLD  
PORT  
SQ.





# The Vision OVERVIEW



Old Port Square reimagines a four-acre block into a distinctive urban destination with residences, retail, restaurants, offices, hotels, and public spaces. Situated at the cultural and economic center of Maine's largest city, the block is being redesigned to strengthen its connectivity to Portland's urban fabric and create an activated and distinct destination featuring prime retail, luxury hospitality, residences, award-winning food and beverage, Class A office, and experiential uses in Portland's historic downtown. The vision for Old Port Square is being brought to life through a collaboration between East Brown Cow, Safdie Architects, Pentagram, and Michael Boucher Landscape Architecture.





# The Vision SITE MAP

OLD  
PORT  
SQ.



## Buildings

- A 45 Union Street
- B 55 Union Street
- C 178 Middle Street
- D 184 Middle Street
- E 188 Middle Street
- F 190 Middle Street
- G 200 Middle Street
- H 210 Middle Street
- I 220 Middle Street
- J 36 Exchange Street
- K 44 Exchange Street
- L 45 Exchange Street
- M 57 Exchange Street
- N Old Port Square Garage
- O 424 Fore Street
- P Hyatt Place Portland - Old Port Square

## Public Spaces

- Q Old Port Square Outdoor Public Space
- R Lobsterman Park
- S Tommy's Park
- T Post Office Park

● Pylon Signage Location

# The Vision NEIGHBORHOOD

OLD  
PORT  
SQ.



## Featured Tenants

WARBY  
PARKER

URBAN  
OUTFITTERS

BAR FUTO

PopUp  
Bagels

HYATT  
PLACE

THE DOCENT'S  
COLLECTION

Fidelity  
INVESTMENTS

Camden  
NATIONAL BANK