

FOR LEASE - FLEX BUILDING

506 Old Liverpool Road, Liverpool, NY 13088



37,711 SF | 2.46 ACRES | 121 PARKING SPACES | 2 OVERHEAD DOORS | 3-PHASE 1600 AMP

CONTACTS

MARK BETHMANN

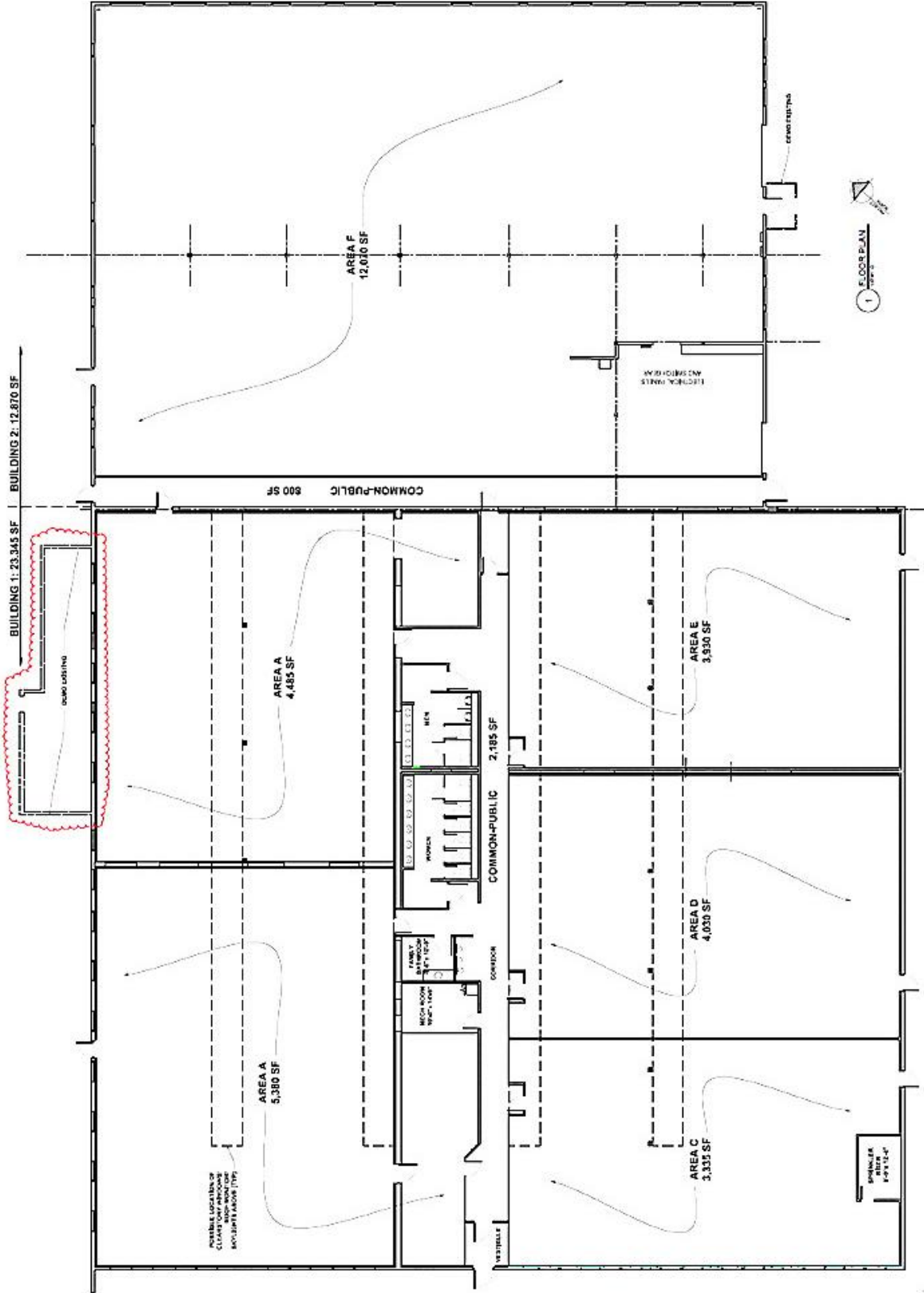
BellCornerstone
315.579.0045
mbethmann@bellcornerstone.com

DAN LYNCH

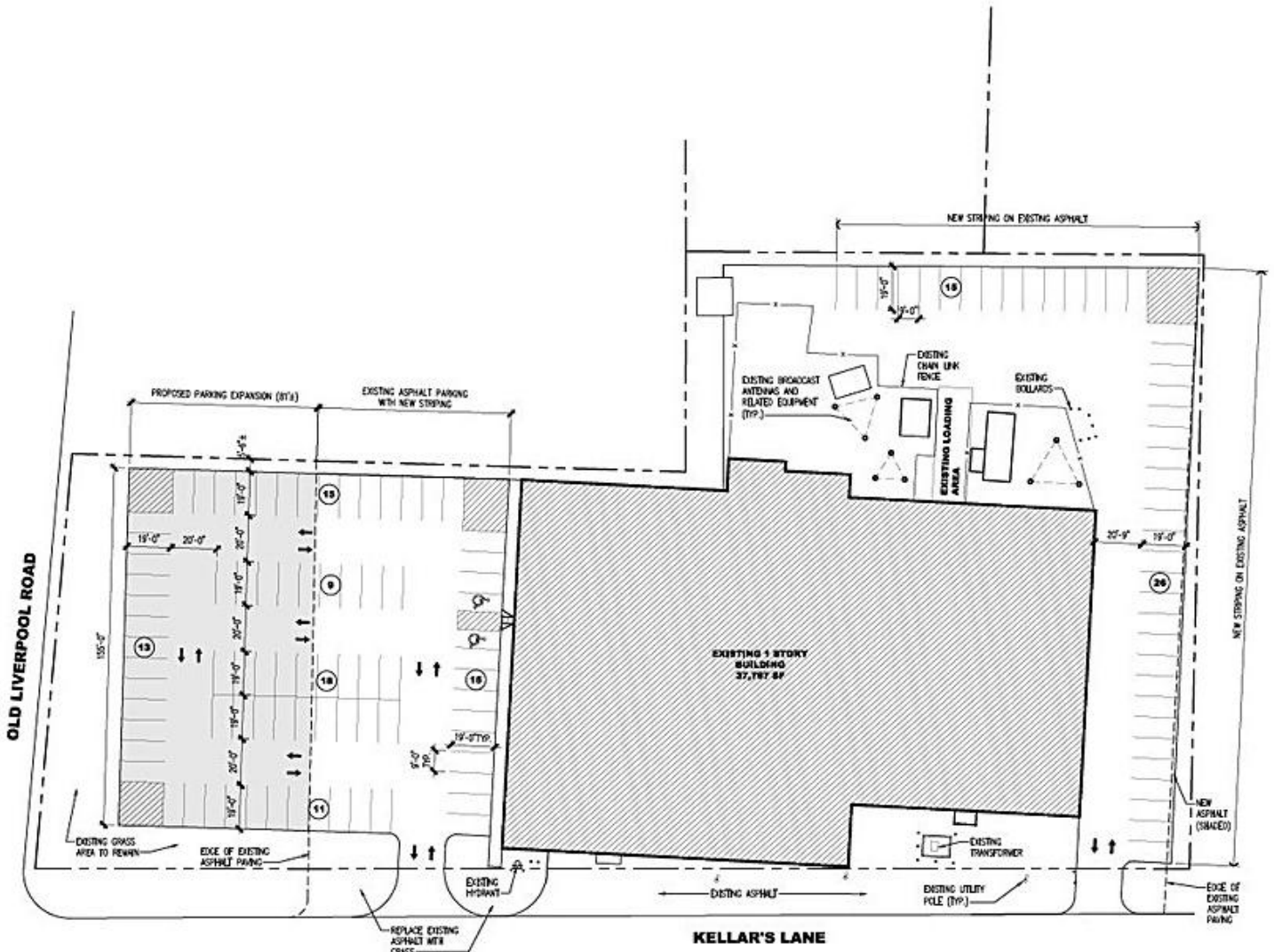
BellCornerstone
315.498.1600
dlynch@bellcornerstone.com



FLOORPLAN



PARKING PLAN SCHEME



1 PROPOSED SITE PLAN SCHEME 3
 1"=30'-0"
TOTAL 122 PARKING SPACES



PROPERTY OVERVIEW

506 Old Liverpool Road, Liverpool, NY 13088



PROPERTY FEATURES

Property Type:	Flex
Year Built:	1960, Renovated 2021
Building SF:	37,711 SF
Site Size:	2.46 Acres
Floors:	1
Clear Height:	13'6"
Parking:	Ability to expand the parking lot up to 121 cars
Exterior Docks:	2 Overhead Doors, 10'W x 12'H
Power:	Three-phase, 1600 Amp
Traffic Count:	15,723 AADT



**506 Old Liverpool Road,
Liverpool, NY 13088**

BELLCORNERSTONE

Commercial Real Estate

FOR MORE INFORMATION:

Mark Bethmann
BellCornerstone
315.579.0045
mbethmann@bellcornerstone.com

Dan Lynch
BellCornerstone
315.498.1600
dlynch@bellcornerstone.com

DISCLAIMER: The information contained in this flyer has been prepared to provide summary information and to establish a preliminary level of interest in the subject property. The information contained herein is for informational purposes only and does not constitute an offer to sell, lease, or sublease, nor is it a solicitation for same.