

600 Airport Rd, Wintersville, OH 43953-9237

Geary A. Bates Airport (Jefferson County, OH)



# AIRPLANE HANGAR READY TO LEASE!



**CONTACT**  
**JOSEPH LUCKINO**  
**BROKER**  
(740) 632-9111  
jluckino@cedar-one.com



143 Canton Road  
Wintersville, OH 43953  
(740) 264-7131  
**CEDARONEREALTY.COM**





### BUILDING DETAILS

GBA: 10,000

Year Built: 1980/ Year Remodeled: 2000

Construction: Metal

Sprinklers: Wet

### TRAFFIC

Cross Creek Rd	Fernwood Rd NW	1,011	2022	0.43 mi
T-174 RD	Fernwood Rd NW	1,045	2020	0.43 mi
Cross Creek Road	Fernwood Rd NW	1,099	2020	0.43 mi
Cross Creek Rd	Fernwood Rd NW	1,041	2017	0.46 mi
Fernwood Rd	Airport Access Rd NE	329	2020	0.53 mi
Cr 33	Fernwood Rd E	827	2017	0.53 mi
Cr 33	Fernwood Rd E	799	2022	0.53 mi
C-33 RD	Fernwood Rd E	804	2020	0.53 mi
Fernwood Rd	Airport Access Rd NE	302	2022	0.53 mi
Fernwood Rd	Airport Access Rd NE	306	2021	0.53 mi

### LEASING HIGHLIGHTS

Jefferson County Airpark is a hidden gem just 45 mins from downtown Pittsburgh. For the flying enthusiast or the professional that wants to shorten their travel time using their private aircraft to attend region job sites or meetings this is a perfect opportunity.

There are multiple hangar bays that can support a variety of aircraft from personal single engine aircraft to cooperate jets.

Amenities include fueling, rental car services, and lounge.

Tenants located within the airpark property:

- Bates Bros Amusement Co
- A. R. M. (USA) Inc.
- Rose Pest Solutions
- Anthony Mining Company
- Pier Aviation Jefferson Co Soccer
- Jefferson Co 911
- Jefferson Co
- Animal Shelter
- Stat Medevac
- R & L Construction
- Todd Morelli Building Co
- Jefferson Aviation Svcs

### OTHER NEARBY AIRPORTS WITH INSTRUMENT PROCEDURES:

KHLG - Wheeling Ohio County Airport (11 nm S)

8G6 - Harrison County Airport (16 nm SW)

02G - Columbiana County Airport (19 nm N)

KTSO - Carroll County-Tolson Airport (21 nm NW)

2P7 - Alderman Airport (22 nm SW)

143 Canton Road  
Wintersville, OH 43953  
(740) 264-7131

CEDARONEREALTY.COM



### Jefferson County Airpark (2G2)



The Runway 14-32 Extension project, completed in 2014, provides the capability to serve the needs of the corporate tenants and transient users of Jefferson County Airpark.



© Kevin P. Sell

The Jefferson County Airport Authority formed in 1993. Since then, FAA has granted over \$7.2M for airport improvements, ODOT has granted over \$1.6M, Ohio Division of Jobs and Commerce has granted \$750k, Jefferson County Commissioners contributed \$3,921,606.18 insurance proceeds \$1,769,809.14, and Airport generated revenues \$11,406,137.56.

- Gas & Oil Revenues total \$4,215,215.44
- Runway expanded to 5000' x 75' in 2014
- New terminal building constructed in 2008
- Airport Zoning Regulations were adopted in 2020

[www.jeffersoncountyairpark.org](http://www.jeffersoncountyairpark.org)

#### 2021 Projects:

- PAPI replacement Runway End 32 – ODOT granted \$38,907.50 (79%), local match is 21%
- AWOS-II installation – \$248,475.00 (100% FAA)
- Taxiway A Reconstruction - \$4,116,608.00
- 6-unit hangar building placed for bid

#### Economic Impact:

- Jobs 66
- Payroll \$2.3 million
- Output \$8.1 million
- 6 Land Leases
- 11 Businesses
- 1 Recreational Facility

#### Future Projects:

- Extend Terminal Apron
- Construct Parallel Taxiway Ends



**Funding Partner**  
The Federal Aviation Administration provides entitlement, discretionary, and supplemental funding for many of the projects required to increase safety, maintain infrastructure, and improve the capabilities of the national aviation system. The Airport Improvement Program, supplemental funding programs, and relief funding play a critical role in infrastructure development and operations.

**Funding Partner**  
Support from the Ohio Department of Transportation Office of Aviation is critical to the success of Ohio Airports. Through direct (80%+) and matching grant (5%) programs ODOT provides much needed support of aviation infrastructure in Ohio. ODOT is also responsible for the protection of Ohio's Airspace for the safe and continued operation of airports in the state.

**Advocacy Partner**  
The Ohio Aviation Association is the voice for airports that contribute to the economic vibrancy and well-being of Ohio, the birthplace of aviation.  
[www.ohioaviation.org/](http://www.ohioaviation.org/)  
[aaa@ohioaviation.org](mailto:aaa@ohioaviation.org)  
Ph. 614-526-4990

### STEUBENVILLE

JEFFERSON CO AIRPARK (2G2) 4 W UTC-5(-4DT) N40°21.64' W80°42.10'

DETROIT  
L-298  
IAP

1198 B NOTAM FILE CLE

RWY 14-32: H5001X75 (ASPH) S-31, D-42.5 PCN 12 F/D/X/T MIRL

RWY 14: REIL

RWY 32: REIL: PAPI(P4L)—GA 3.6° TCH 41'. Brush.

SERVICE: S2 FUEL 100LL, JET A, A+ LGT ACTIVATE REIL Rwy 14 and Rwy 32; PAPI Rwy 32; MIRL Rwy 14-32—CTAF. Rwy 32 PAPI unusbl 5° L and 9° R of cntrln.

AIRPORT REMARKS: Attended 1400-2200Z±. Fuel Jet A and 100LL avbl 24 hrs with credit card. Occl deer, birds & otr wildlife on & invof arpt. Trnst hangar storage PPR.

AIRPORT MANAGER: (740) 264-5388

COMMUNICATIONS: CTAF/UNICOM 122.8

® PITTSBURGH APP/DEP CON 124.75

CLEARANCE DELIVERY PHONE: For CD etc Pittsburgh Apch at 412-472-5591.

RADIO AIDS TO NAVIGATION: NOTAM FILE HLG.

WHEELING (L) VOR/WME 112.2 HLG Chan 59 N40°15.59'

W80°34.12' 322° 8.6 NM to fld. 1269/7W.

VOR portion unusable:

020°-026° byd 15 NM

028°-039° byd 10 NM

080°-100° byd 15 NM blo 11,000'

123°-133° blo 4,000'

150°-170° byd 15 NM

R-027 byd 20 NM



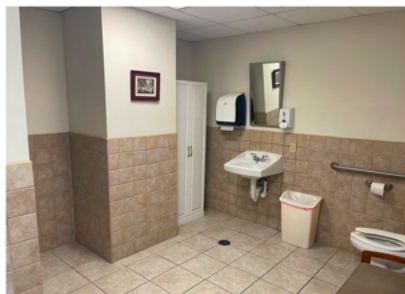
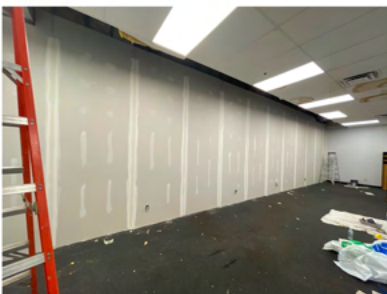
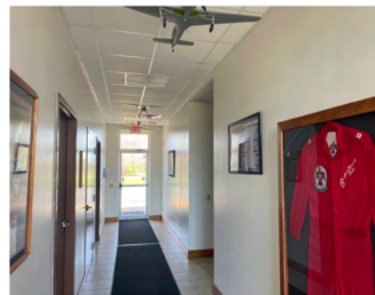


600 Airport Rd, Wintersville, OH 43953-9237

Geary A. Bates Airport (Jefferson County, OH)



## PROPERTY PHOTOS



143 Canton Road  
Wintersville, OH 43953  
(740) 264-7131

[CEDARONEREALTY.COM](http://CEDARONEREALTY.COM)

