



# THE 620 BUILDING

AT INNOVATION DISTRICT

620 SW 4th Avenue  
Gainesville, FL 32601

Near UF and Downtown

1,400 SQFT  
Approx. 6-9 Employees

Upscale Renovated  
Modern Office Space

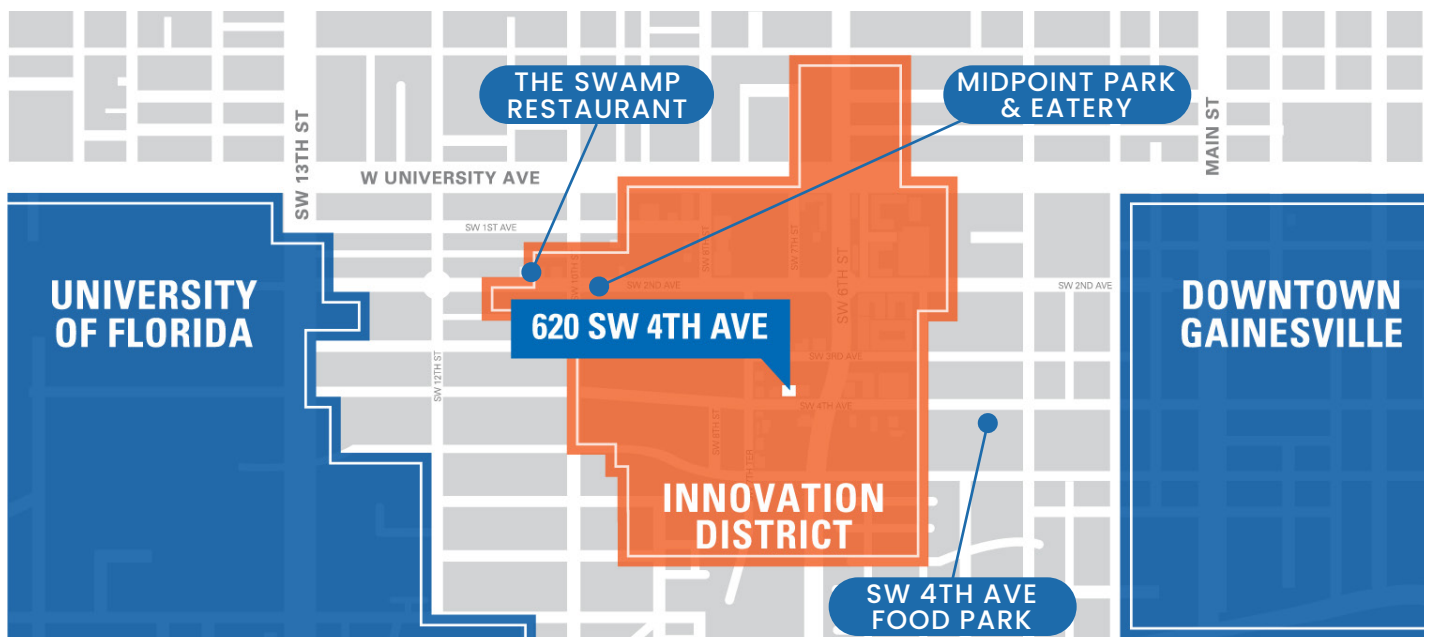
## THE PERFECT LOCATION

The Innovation District is growing quickly with start-ups and publicly traded companies alike, this location offers endless networking benefits and the convenience of working walking distance to dozens of popular lunch destinations and retail outlets.

## BUILT-TO-SUIT UPSCALE OFFICE SPACE

Available for December 2022 move-in, this office space features up to 1,400 square feet of customizable office space. Whether you want individual desks or communal tables, you'll be able to arrange the office to your company's liking.

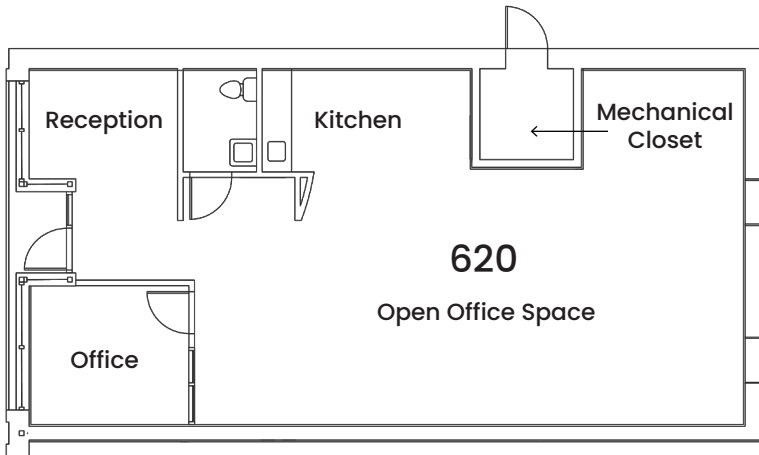
## INNOVATION DISTRICT MAP



## PROPERTY HIGHLIGHTS

- December 2022 move-in
- A recently renovated open office space with modern features
- An open, easily-customizable layout, that can be arranged to a space that fits the needs of your company
- Ultramodern design elements such as exposed metal duct work, brick accent wall and a kitchenette with updated appliances

## FLOORPLAN



## PROPERTY PHOTOS



## CONTACT US

TRIMARK PROPERTIES

Email: [commercial@trimarkproperties.com](mailto:commercial@trimarkproperties.com)

Phone: 352-376-7568