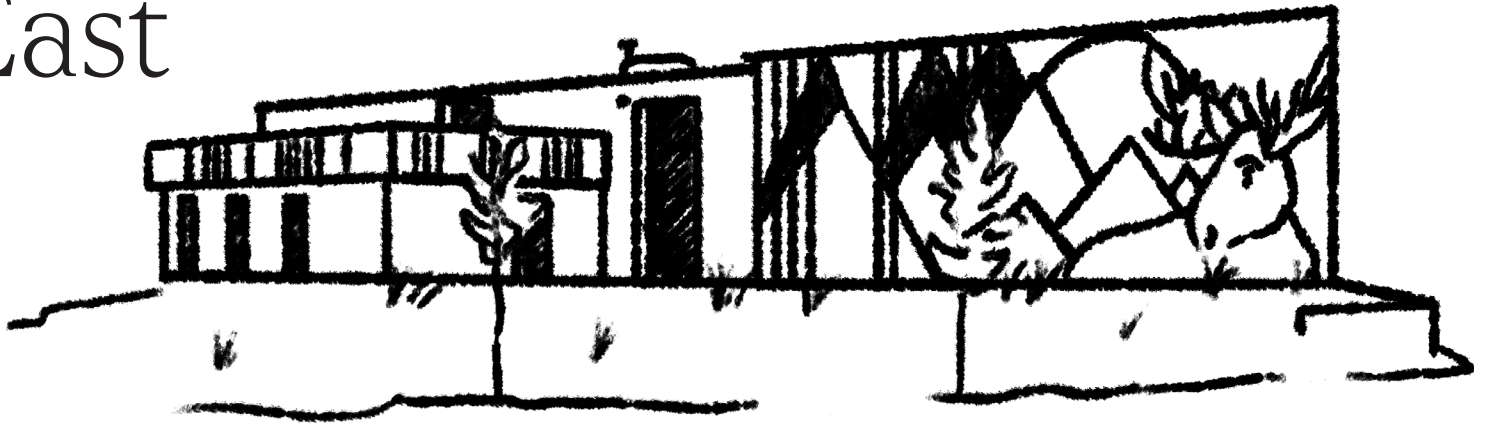




Kew Industrial East

3200 - 3240 West 71st Avenue
Westminster, 80030



About

- Large industrial warehouse and office spaces in Westminster
- Located near RTD B-Line Light Rail Westminster Station
- Located in Adams County Enterprise Zone
- Easy access to Federal Blvd, I-76, I-25, and US-36
- Rare automotive zoning and off-street parking
- Clear heights of 16-18 feet and loading 10' X 12' grade level doors

Details

ADDRESS	3200 - 3240 W. 71st Ave.
CITY + COUNTY	Westminster, Adams
NUMBER OF BUILDINGS	4
CONSTRUCTED	1974-1977
OWNER	KEW Realty Corporation



KEW Realty Corporation

300 S Jackson St #550
Denver, Colorado 80209

kewrealty.com

Kew Industrial East

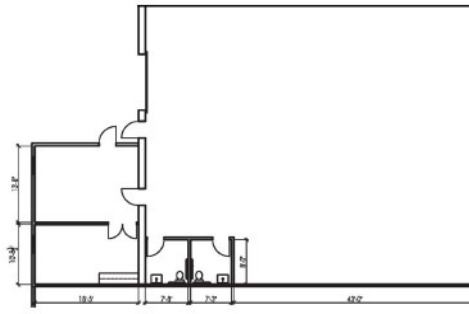
3200 - 3240 West 71st Avenue
Westminster, 80030



Availability

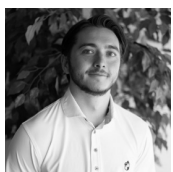
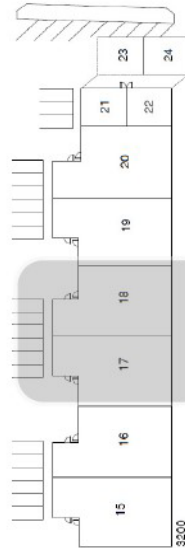
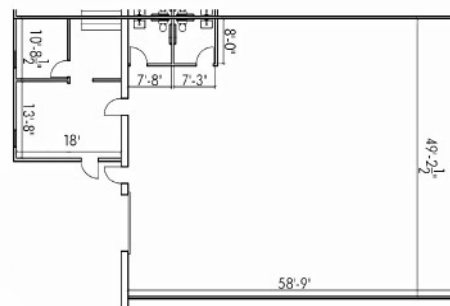
ADDRESS	3200 W. 71st Ave. - Unit 18
SF	3,500 SF
RATE SF/YR	9.50/SF
DETAILS	This industrial unit has a large open space with 2 private offices and 2 restrooms.

3,500 SF



ADDRESS	3200 W. 71st Ave. - Unit 17
SF	3,500 SF
RATE SF/YR	9.50/SF
DETAILS	This industrial unit has a large open space with 2 private office and 2 restrooms.

3,500 SF



Blake Ham
Leasing Manager

720.308.2230
bham@kewrealty.com



kewrealty.com