

# FOR LEASE

## 5,286 SF Downtown Lakeland Retail/Office

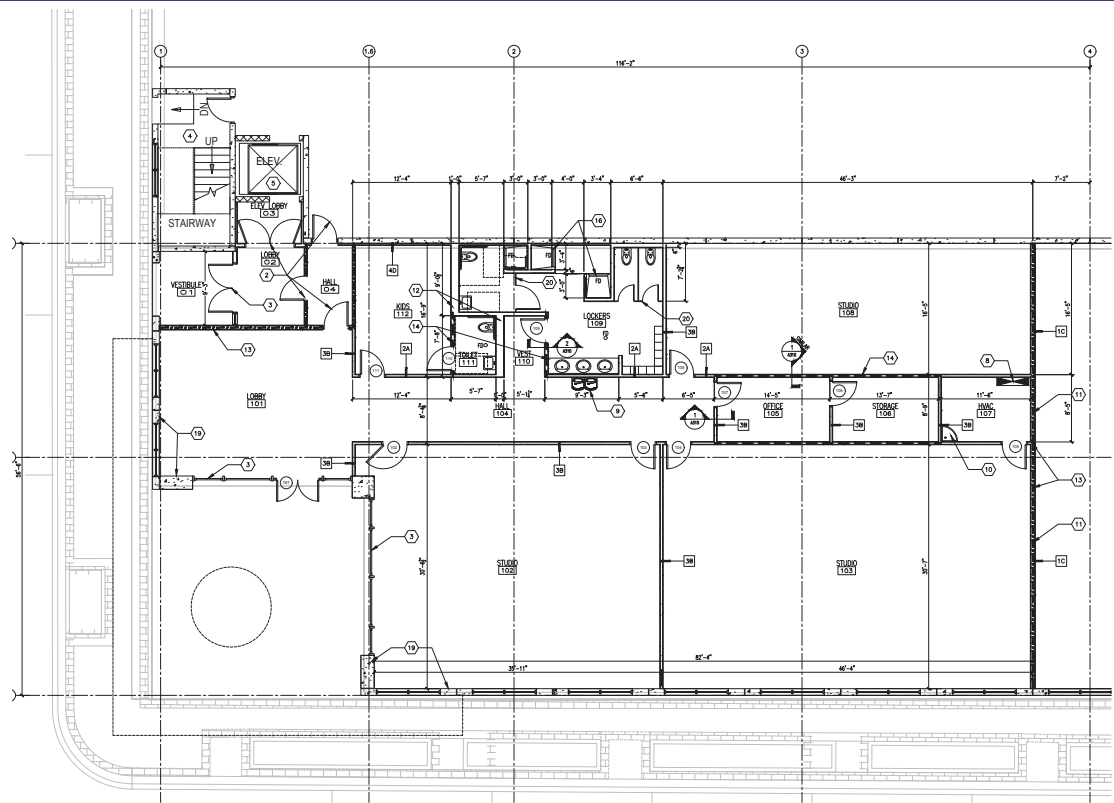
- Up to 12,594 SF of Contiguous Ground Floor Office Space Available
- Available immediately
- Rent: Call for Information
- Public and Private Parking Available
- Located in the Heart of Publix's New Technology Campus
- On site property Management
- Newest Office Building in Downtown Lakeland

204 E Orange Street  
Lakeland, FL 33801

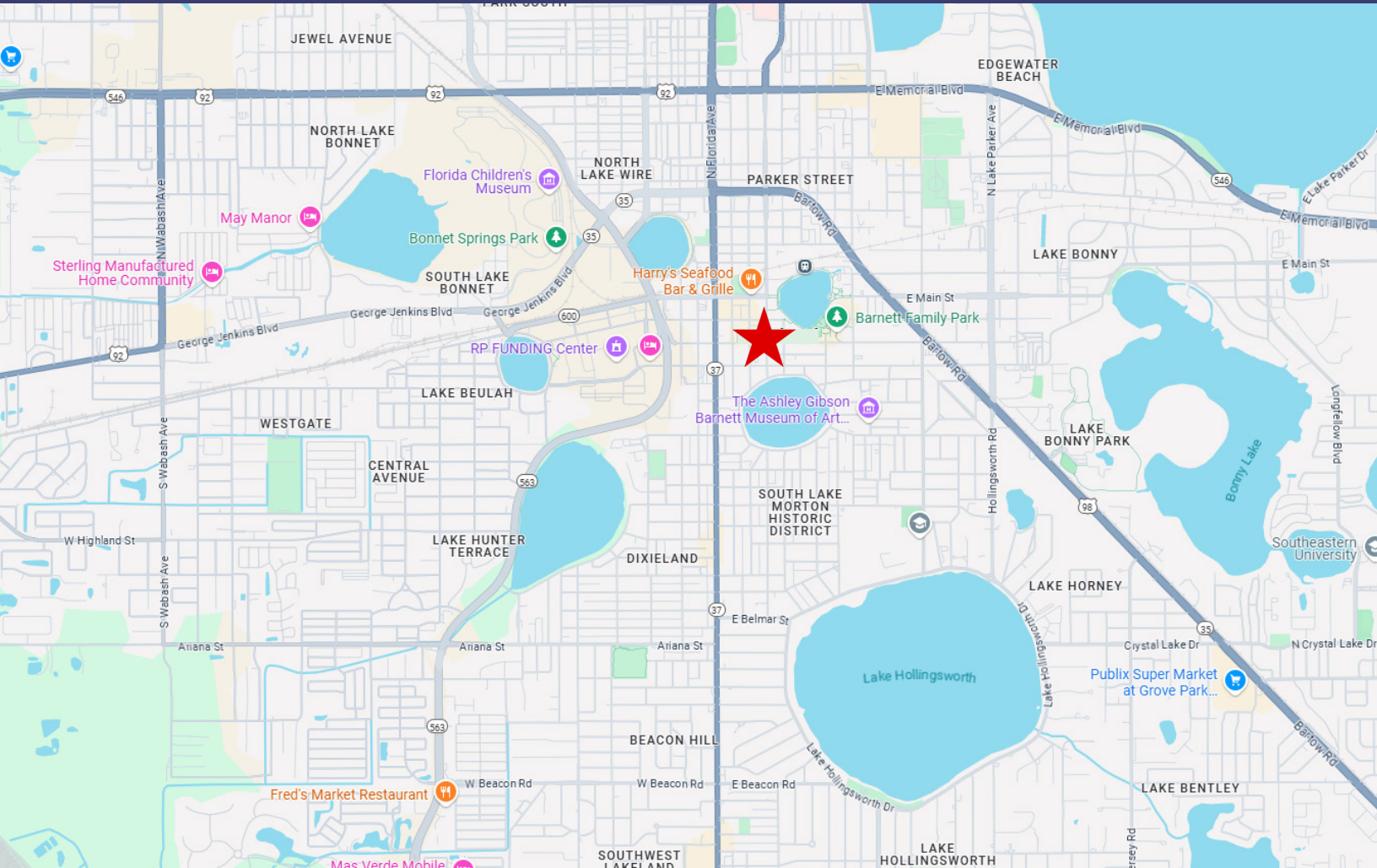




Site Plan



Location Map



CONTACT US:



Landon Beck

Founding Principal

Industrial/Office Services

Cell: +1 863 838 2649

Email: [Landonbeck@aspyrebrokerage.com](mailto:Landonbeck@aspyrebrokerage.com)

[www.aspyrebrokerage.com](http://www.aspyrebrokerage.com)

4120 Frontage Road South  
Lakeland, FL 33815