

# 1011 Arlington Blvd, Suite 375 Arlington, VA

## FEATURES + AMENITIES

- Recently Renovated Standalone Office Building in the heart of Rosslyn
- Includes 10 Parking Spaces w/More Available at an Extra Cost
- Access to Many On-Site River Place Place which Includes an Exercise Facility, Entertainment Center and Much More! Link to River Place South Amenities
- Exterior Signage visible from Rt. 50
- Suite Provides Views of Potomac River and D.C. Monuments
- Walking Distance to Retail Shopping and Many Dining Options
- Only 2 Blocks from the Rossly Metro Station and easy access

## SALE OR LEASE

Lease: \$26.50/sf + Electric  
Sale: \$1,498,000

**5,802 SF**

## CONTACT DETAILS

John Thiel, RDJ Inc.

Call: 703.807.1002

Email: [jthiel@omnibsi.com](mailto:jthiel@omnibsi.com)

2850 Eisenhower Avenue  
Suite 1500  
Alexandria, VA 22314

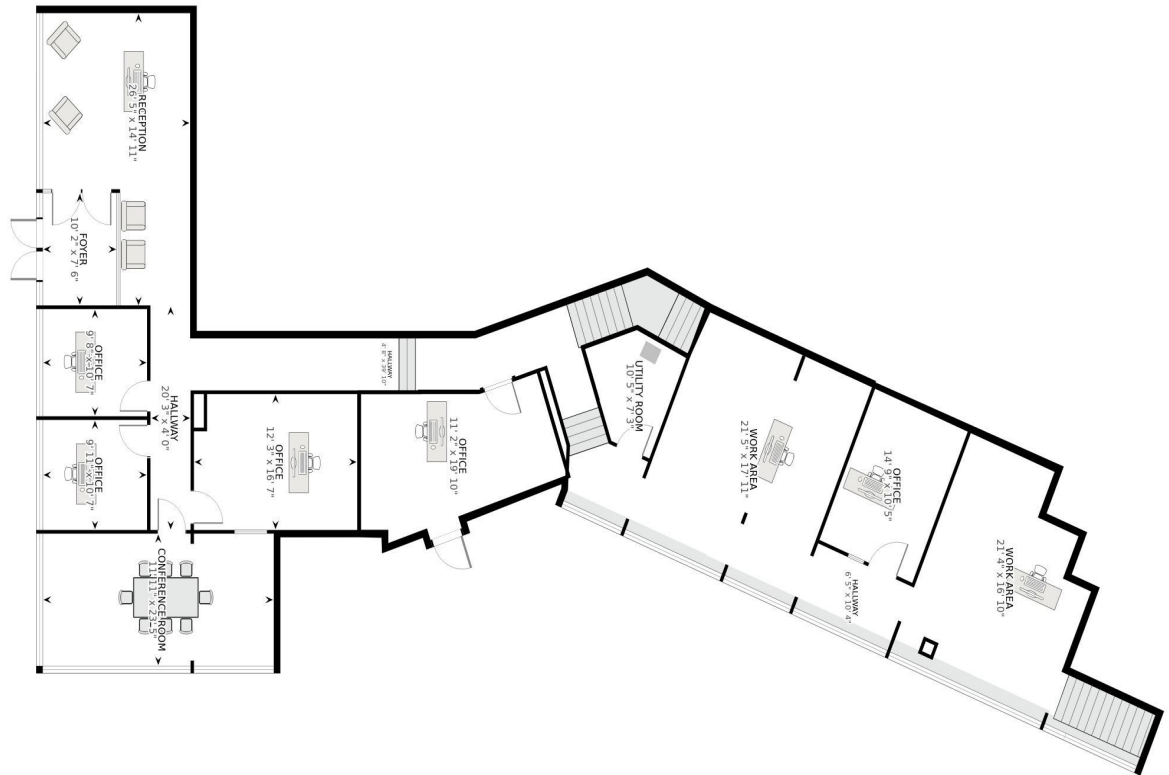


# 1011 Arlington Blvd, Suite 375, Arlington, VA

5,802 SF - \$26.50/SF - Prime Location

## MAIN FLOOR

- Double Glass Doors
- Large Reception Area and Waiting Area
- Conference Room
- 5 Offices
- 2 Open Work Areas
- Library
- Utility Room



FOR FURTHER INQUIRIES:

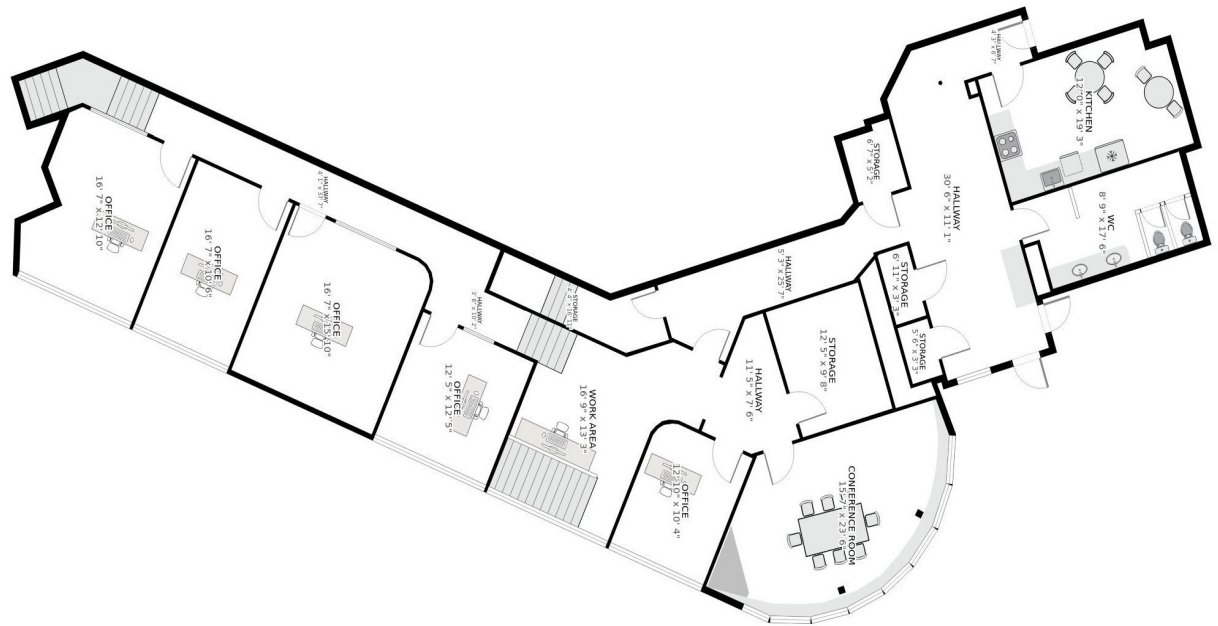
**John Thiel, RDJ Inc.**  
**Call: 703.807.1002**  
**Email: [jthiel@omnibsi.com](mailto:jthiel@omnibsi.com)**

# 1011 Arlington Blvd, Suite 375 Arlington, VA

5,802 SF - \$26.50/SF - Prime Location

## UPPER LEVEL

- Full Eat-in Kitchen
- Conference Room with Beautiful Views
- 5 Offices
- 1 Open Work Area
- Ample Storage
- Restroom



### FOR FURTHER INQUIRIES:

John Thiel, RDJ Inc. Call:  
703.807.1002 Email:  
jthiel@omnibsi.com



# 1011 Arlington Blvd, Suite 375, Arlington, VA



## CONTACT DETAILS

John Thiel, RDJ Inc.

Call: 703.807.1002

Email: [jthiel@omnibsi.com](mailto:jthiel@omnibsi.com)

2850 Eisenhower Avenue  
Suite 1500  
Alexandria, VA 22314