

Retail Space for Lease

44 W 24th Street

Flatiron District, New York, NY

Location:

Between Fifth Avenue & Sixth Avenue

Retail Space:

Ground Floor: 684 SF

Frontage:

25 FT on West 24th Street

Ceiling Heights:

Ground Floor: 15 FT

Price:

Upon request

Highlights:

- Landlord can deliver a custom build-out for Tenant
- Down the block from Madison Square Park
- High Ceilings
- Great Natural Light
- Strong Foot Traffic
- 1 Block from Iconic Flatiron Building
- 23rd Street F, M & PATH - 1 minute walking distance
- 23rd Street N, Q, R, & W - 2 minutes walking distance



Local Attractions:

TRADER JOE'S

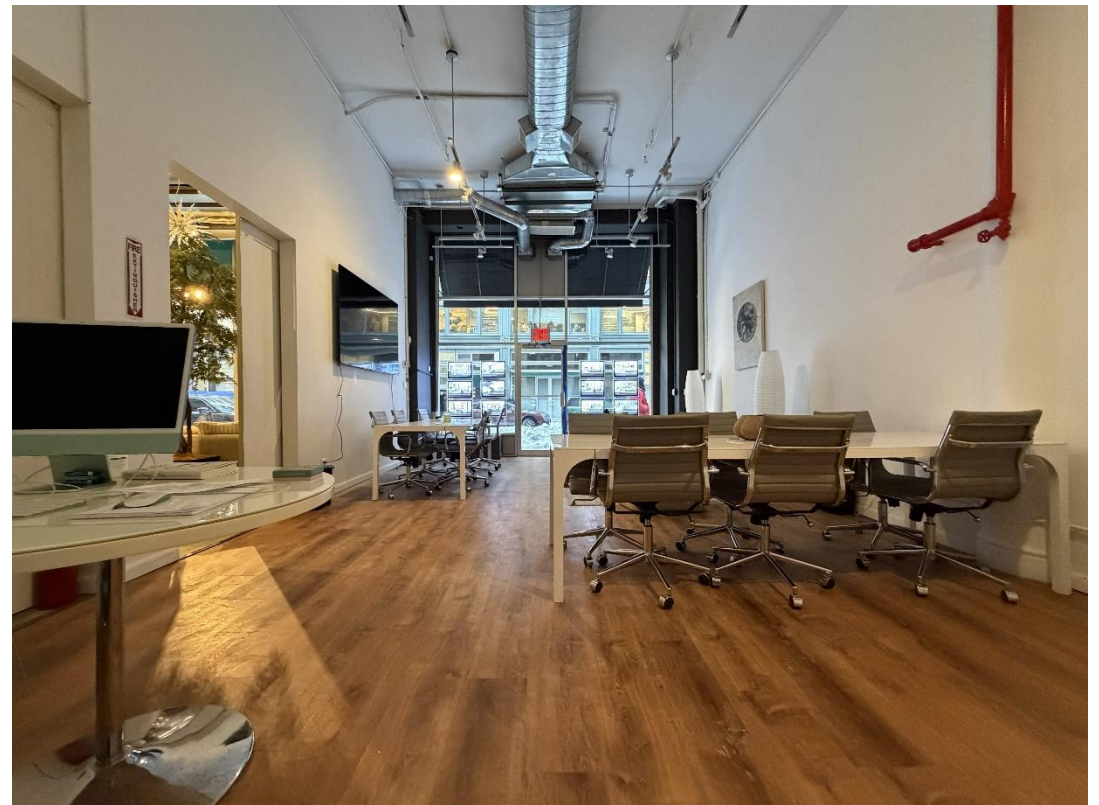
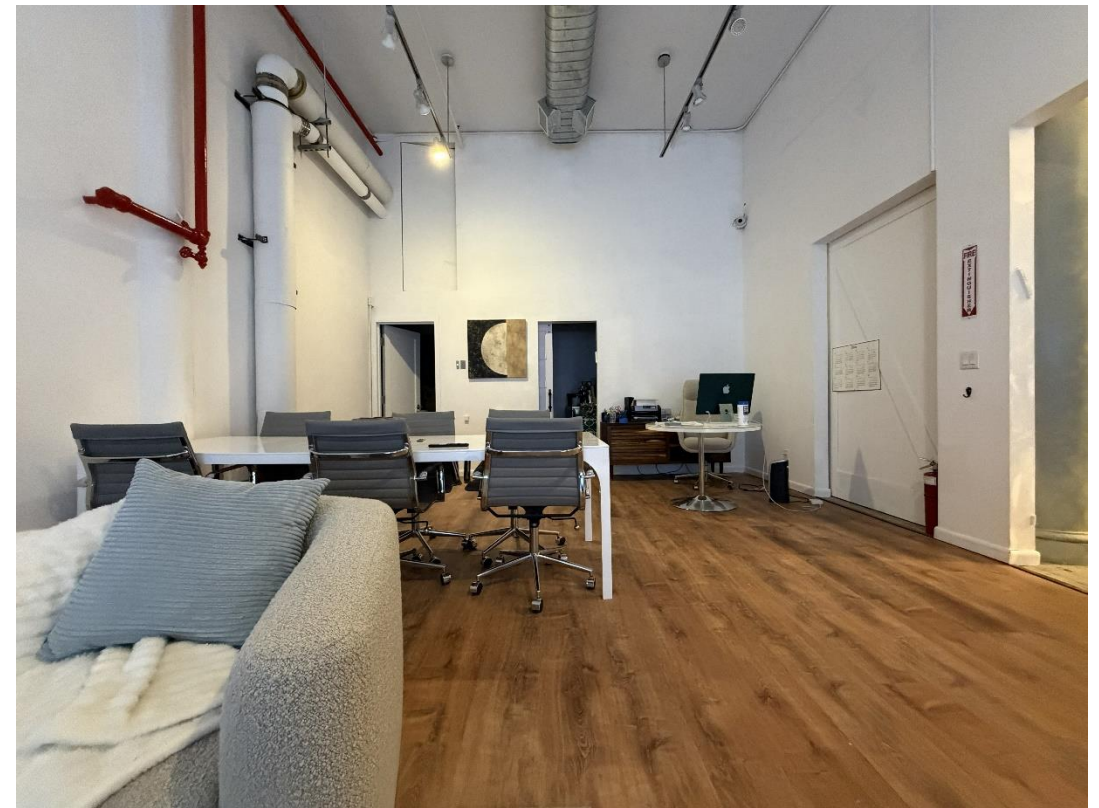


**Call/Text:
516 350 2621**

44 W 24th Street

Ground Floor Photos

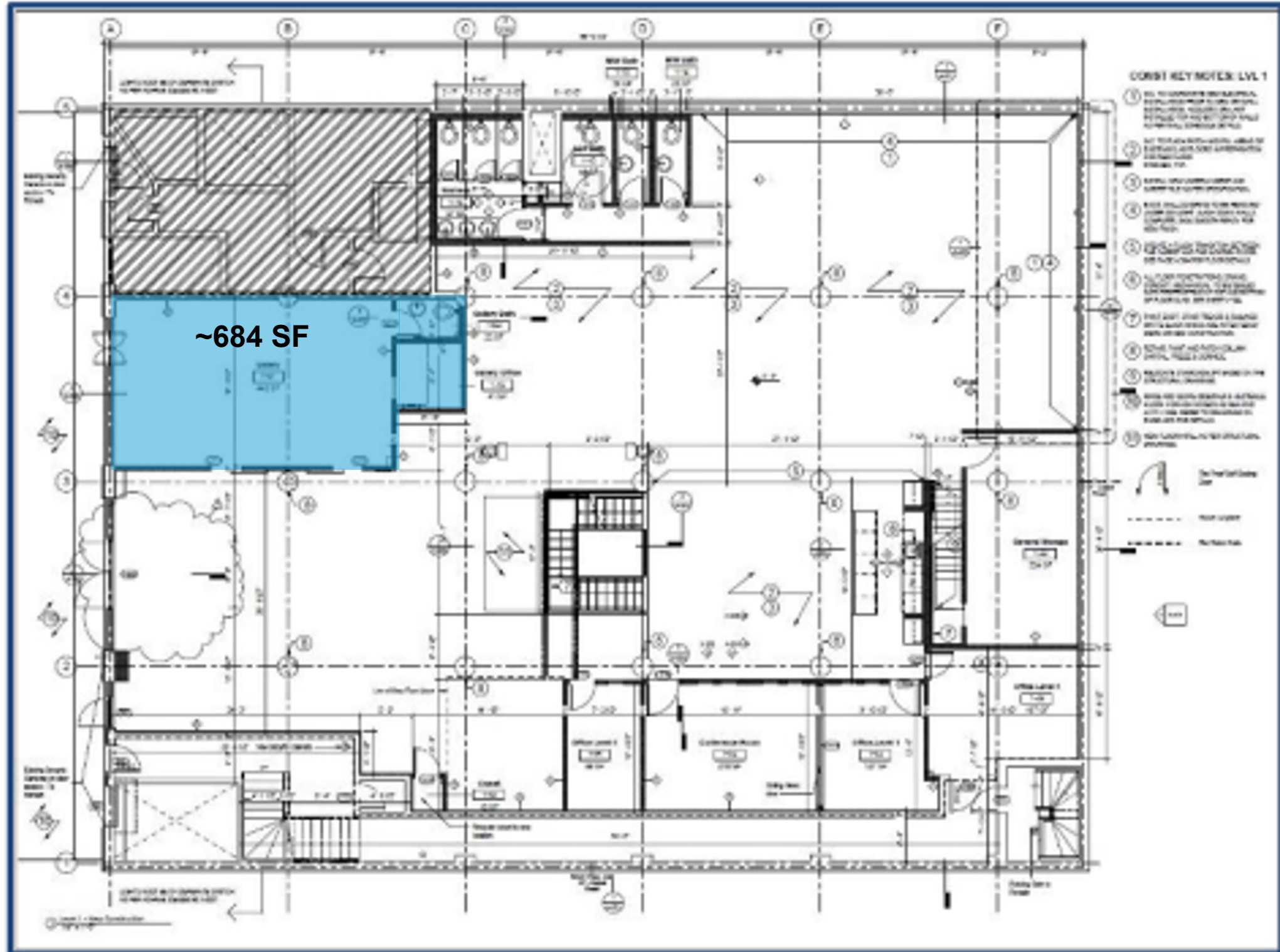
Flatiron District, New York, NY



44 W 24th Street

Flatiron District, New York, NY

Ground Floor Floorplan



CONTACT

JOSH SLOAN

516-350-2621

JS@SLOAN-RE.COM