

**1170 US HIGHWAY 22**

BRIDGEWATER, NJ 08807



**1011 US HIGHWAY 22**

BRIDGEWATER, NJ 08807



**1031 US HIGHWAY 22**

BRIDGEWATER, NJ 08807



**OFFICE  
SPACE  
FOR  
LEASE**

# BRIDGEWATER 22 BUSINESS CENTER BY KRE

## CONTACT US

**PETER N. SHIKAR**

First Vice President

+1 516 946 0425

[peter.shikar@cbre.com](mailto:peter.shikar@cbre.com)

**RONALD H. VOLK**

Vice President

+1 201 401 2764

[ronald.volk@cbre.com](mailto:ronald.volk@cbre.com)

**KRE**  
Kushner Real Estate Group

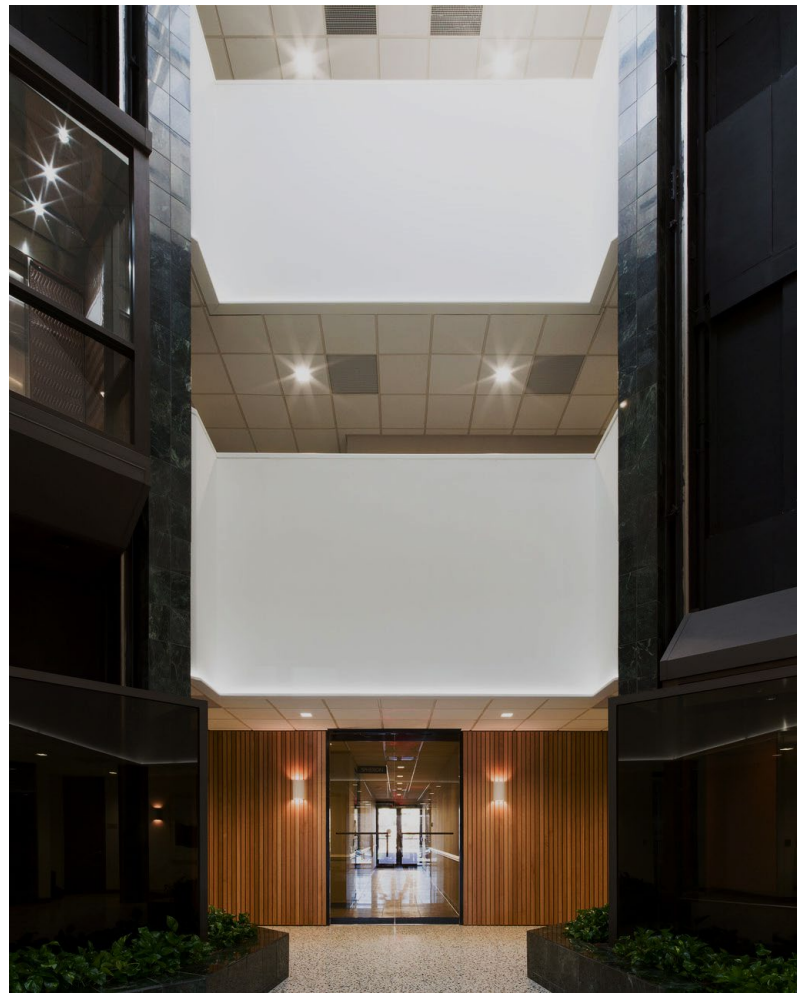
**CBRE**





## AMENITIES

- **DIRECT ACCESS TO ROUTES 22, 287, 202 & 206**
- **NEW CAFE**
- **NEW GYM**
- **NEW CONFERENCE ROOM**
- **PROPERTY MANAGER ON SITE**
- **AMPLE PARKING**
- **CAMPUS SETTING**
- **HOTELS AND RESTAURANTS WITHIN MINUTES**
- **SHOPPING AT NEARBY BRIDGEWATER COMMONS REGIONAL MALL**



## COMMON AREA RENOVATIONS UNDERWAY

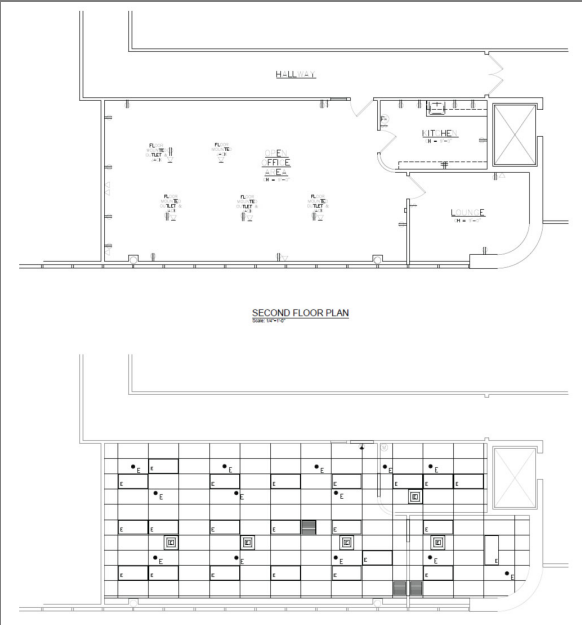


AVAILABILITIES

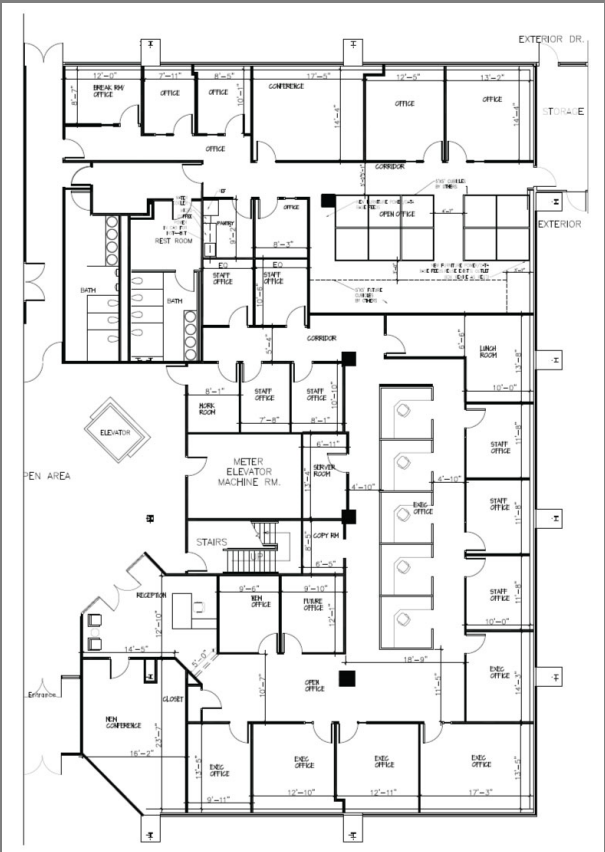
– FLOOR PLANS

1170 US HIGHWAY 22		1031 US HIGHWAY 22		1011 US HIGHWAY 22	
P 3rd	1,918 RSF	P 1st	3,525 RSF	P 1st	5,697 RSF
P 3rd	2,578 RSF	P 2nd	1,551 RSF		
		P 3rd	1,795 RSF		

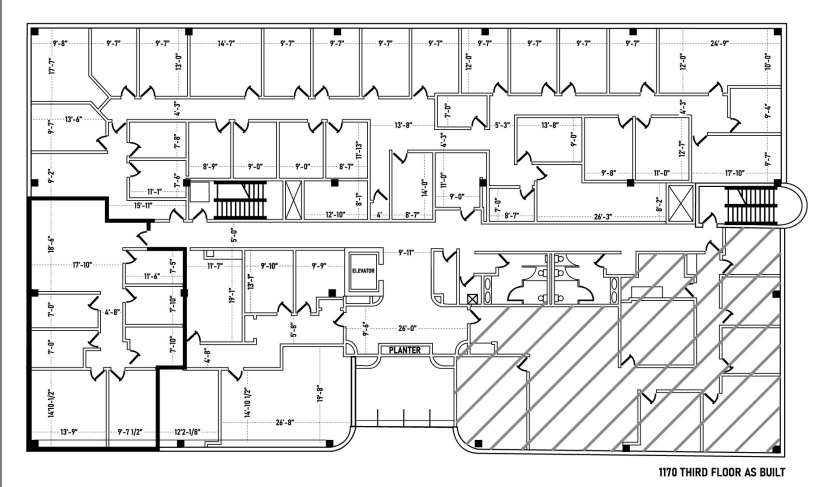
1031 US HIGHWAY 22  
1,551 RSF



1011 ROUTE 22  
5,697 RSF

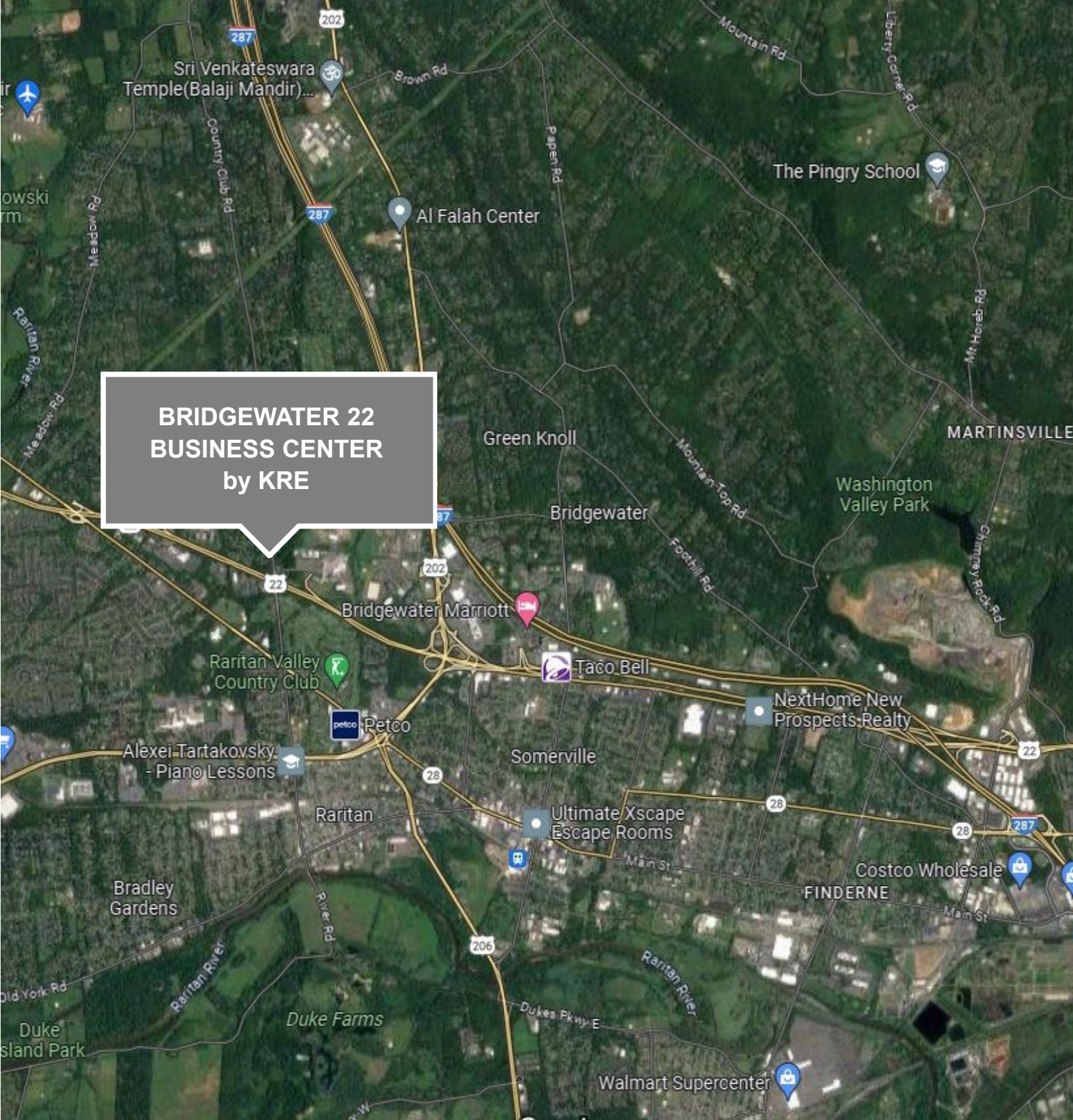


1170 US HIGHWAY 22  
1,918 RSF



1170 THIRD FLOOR AS BUILT





© 2024 CBRE, Inc. All rights reserved. This information has been obtained from sources believed reliable, but has not been verified for accuracy or completeness. You should conduct a careful, independent investigation of the property and verify all information. Any reliance on this information is solely at your own risk. CBRE and the CBRE logo are service marks of CBRE, Inc. All other marks displayed on this document are the property of their respective owners, and the use of such logos does not imply any affiliation with or endorsement of CBRE. Photos herein are the property of their respective owners. Use of these images without the express written consent of the owner is prohibited.