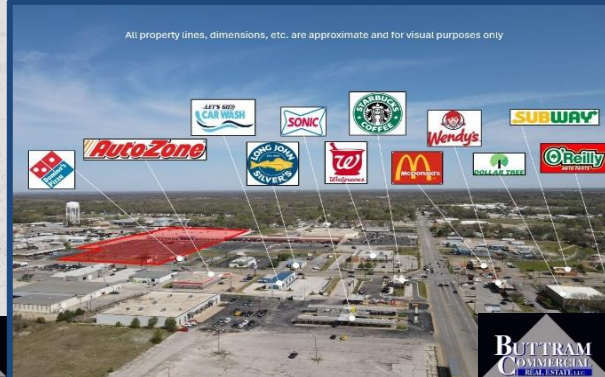


FOR LEASE

1717 WEST 7th St. Ste. 3, Joplin, MO



PROPERTY INFORMATION

Former retail/office building well-suited to those uses or industrial conversion. Pricing is for "as-is" condition. One adjacent suite has been leased to a long term national tenant. Contact Listing Agent for more information.

GENERAL INFORMATION:

SUITE 3:

SIZE:	29,000 SF
TERM:	Negotiable
RENTAL RATE:	\$6/SF/Year
RENT TYPE:	Triple-Net
YEAR BUILT/RENOVATED:	1987/2003

[INTERACTIVE MAP](#)

[VIEW MORE LISTINGS](#)

[ADDITIONAL INFORMATION](#)

[CONTACT US](#)

WHY CONSIDER JOPLIN?

- 5th Largest MSA in Missouri: 208,000 People
- Daytime Population: 250,000 People
- 40-mile Trade Area: 466,000 People

CONTACT

ALAN OR PATRICK BUTTRAM

(417) 850-0240 Alan's Cell

(417) 434-7846 Patrick's Cell

alanbuttram@hotmail.com

bcre247@gmail.com

1931 E. 20th, Suite 104

Joplin, MO 64804

(417) 782-4010 Office

www.bcre1.com



Joplin's #1 Commercial MLS Agent

This information is subject to change without notice; it has been secured from sources we believe to be reliable, but we make no representation or warranties, expressed or implied, as to the accuracy of the information. All references to age, dimensions, square footage, income, and expenses are approximate. Buyers are urged to conduct their own independent investigations and to rely only on those results.