

Pueblo Mall Anchor Space

3429 Dillon Dr | Pueblo, CO



AVAILABLE

16,698 SF

PRICING

Call Brokers

NNN

\$2.20/SF

COLUMN SPACING

32'0" x 31'11"

CLEAR HEIGHT

Ranges from 16'2"

ABOUT THE PROPERTY

- Former gym space (16,698 SF) available 9/1/25
- The Pueblo Mall is home to 451,000 SF of retail across 55+ stores.
- Full plans and LOD available upon request.

CONTACT

Patrick McGlinchey | 210.303.3149
patrick.mcglinchey@srsre.com

Justin Gregory | 303.803.7170
justin.gregory@srsre.com

Erik Christopher | 303.390.5252
erik.christopher@srsre.com

DEMOGRAPHICS

	1 Mile	3 Miles	5 Miles
Population	8,761	59,918	93,262
Daytime Population	10,399	73,878	107,300
Avg. Household Income	\$64,697	\$70,727	\$70,924
Estimated Households	4,082	24,507	38,714

Year: 2025 | Source: Esri

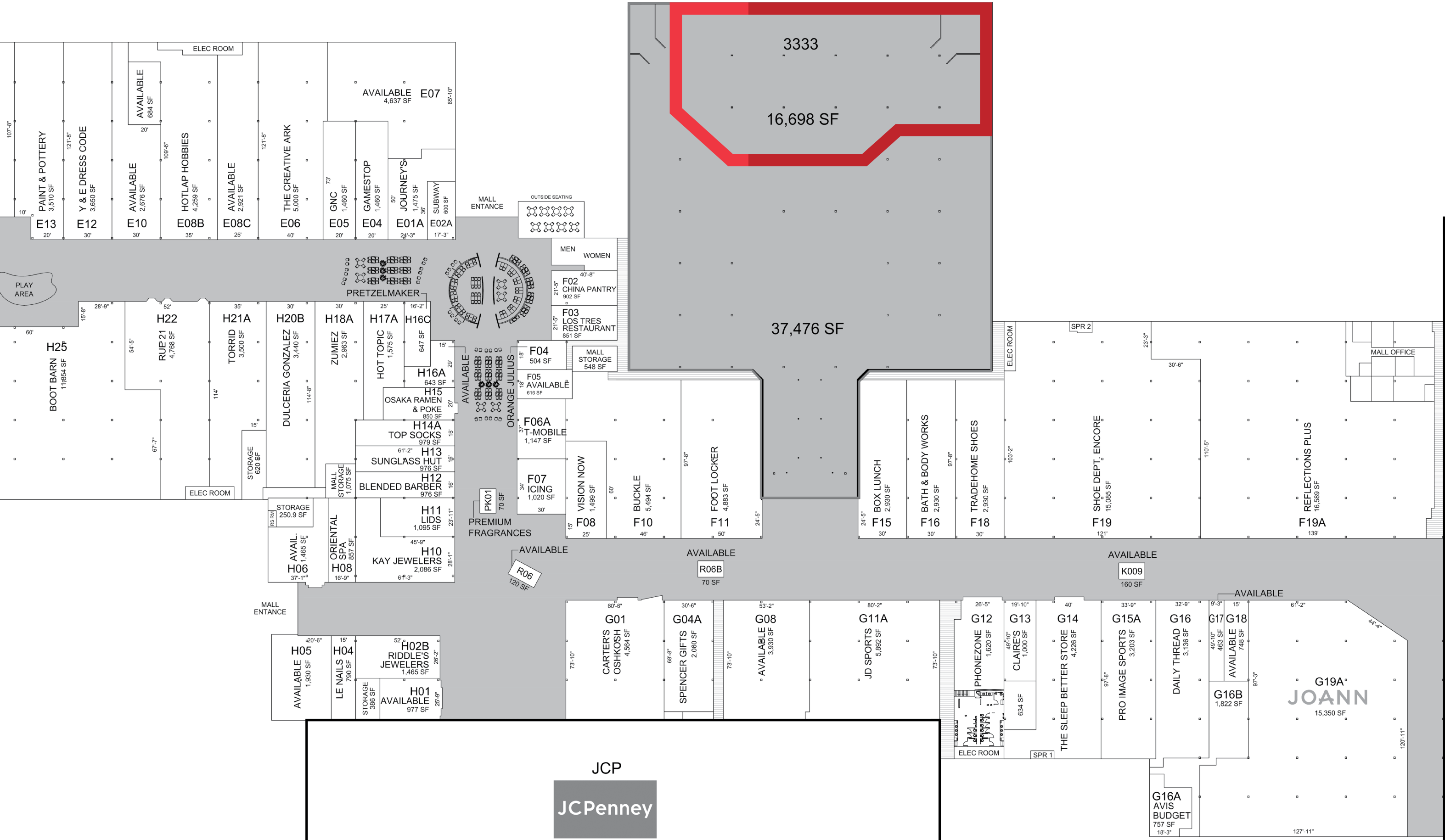
TRAFFIC COUNTS

State Highway 47	40,000 VPD
I-25	80,000 VPD

Year: 2025 | Source: Town of Parker

Pueblo Mall Anchor Space

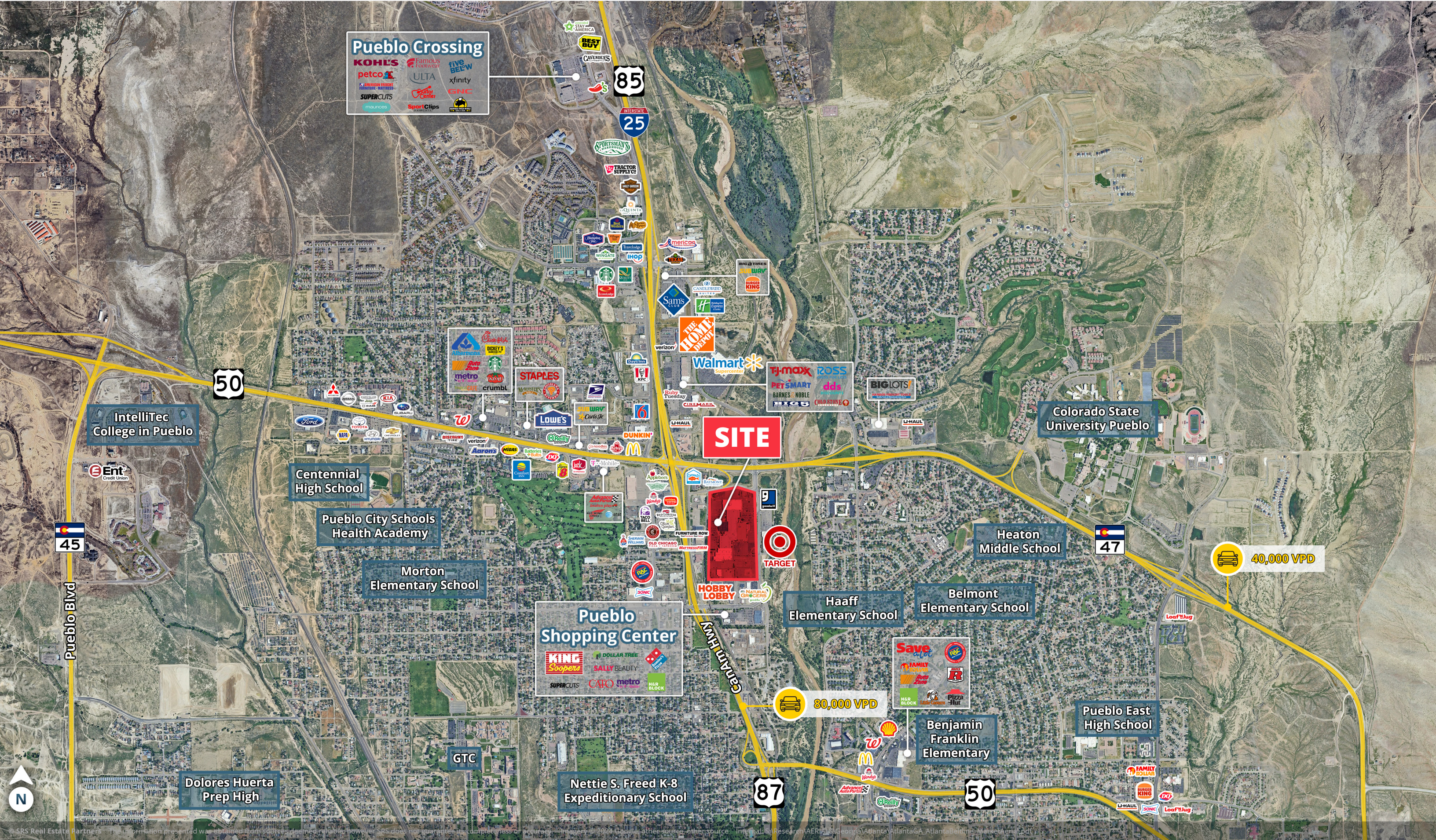
3429 Dillon Dr | Pueblo, CO



JCP
JCPenney

DIL





Pueblo Mall Anchor Space

3429 Dillon Dr | Pueblo, CO



DEMOGRAPHIC HIGHLIGHTS

1 MILE

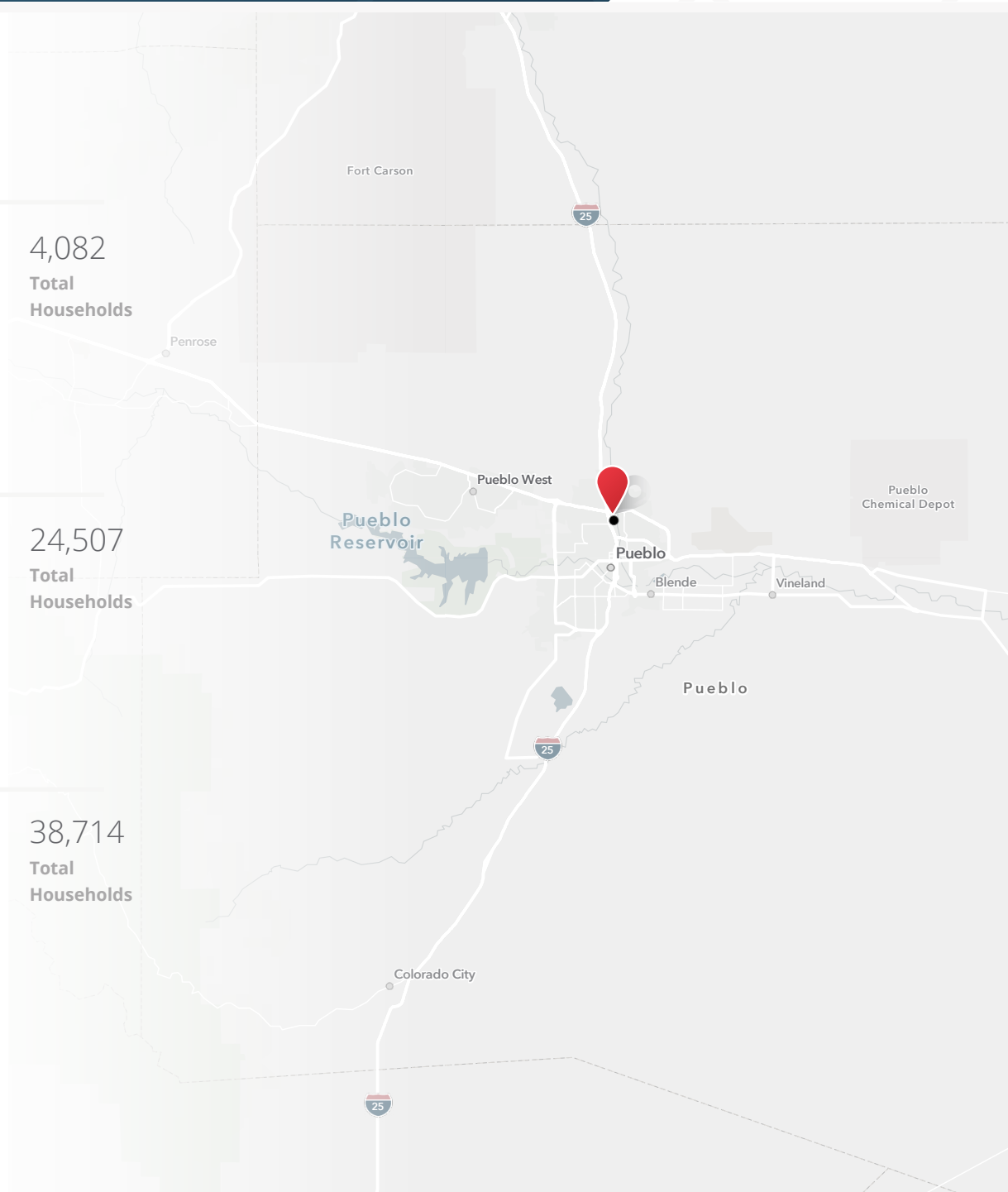
8,761	10,399	\$64,697	4,082
Population	Total Daytime Population	Average Household Income	Total Households

3 MILES

59,918	73,878	\$70,727	24,507
Population	Total Daytime Population	Average Household Income	Total Households

5 MILES

93,262	107,300	\$70,924	38,714
Population	Total Daytime Population	Average Household Income	Total Households



SOURCE





SRS Real Estate Partners

1875 Lawrence Street, Suite 850
Denver, CO 80202
303.572.1800

Patrick McGlinchey

210.303.3149

patrick.mcglinchey@srsre.com

Justin Gregory

303.803.7170

justin.gregory@srsre.com

Erik Christopher

303.390.5252

erik.christopher@srsre.com

SRSRE.COM

© SRS Real Estate Partners

The information presented was obtained from sources deemed reliable;
however SRS Real Estate Partners does not guarantee its completeness or accuracy.