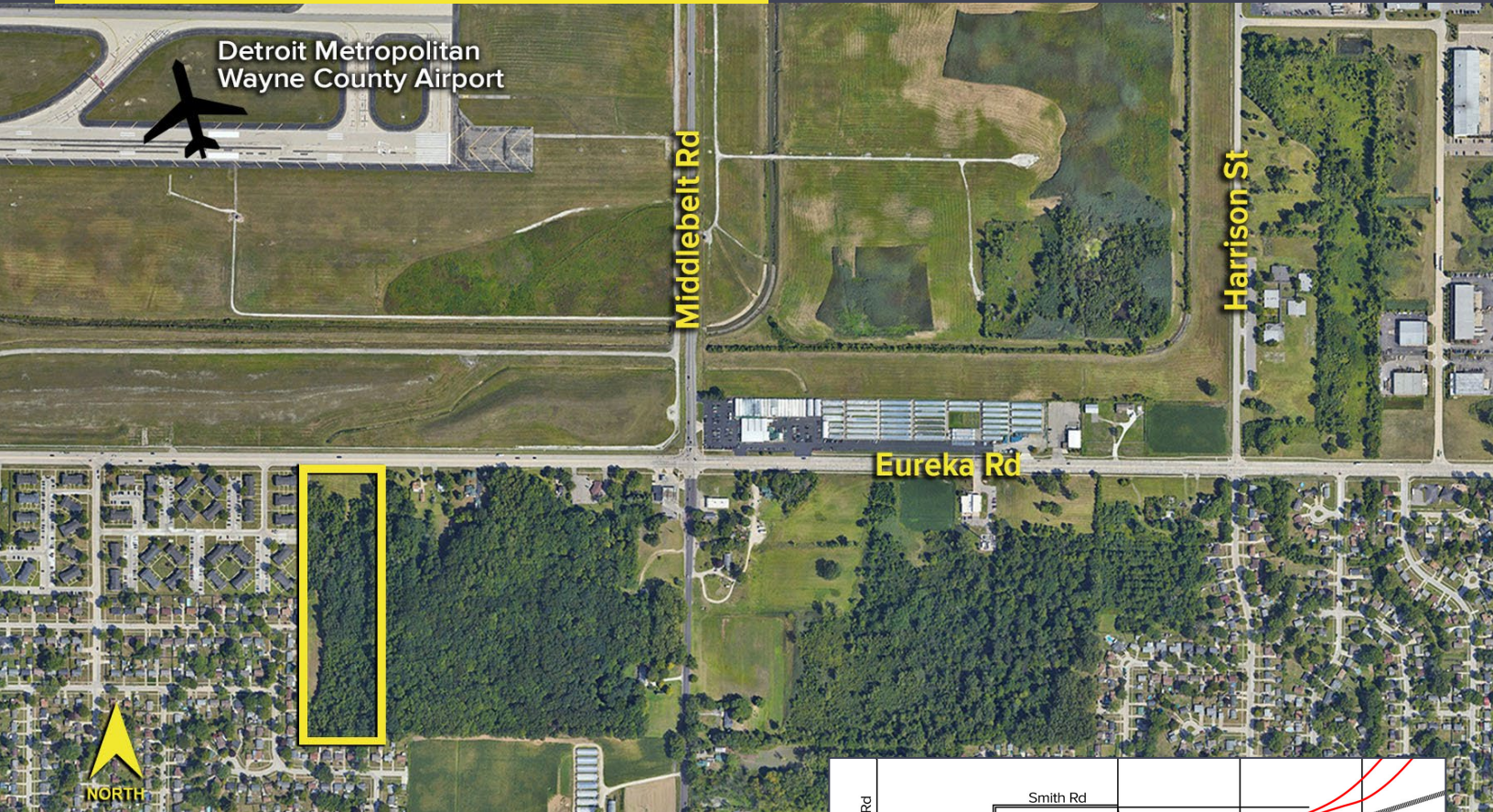


EUREKA ROAD ROMULUS, MICHIGAN

LAND FOR SALE
9.66 Acres Available

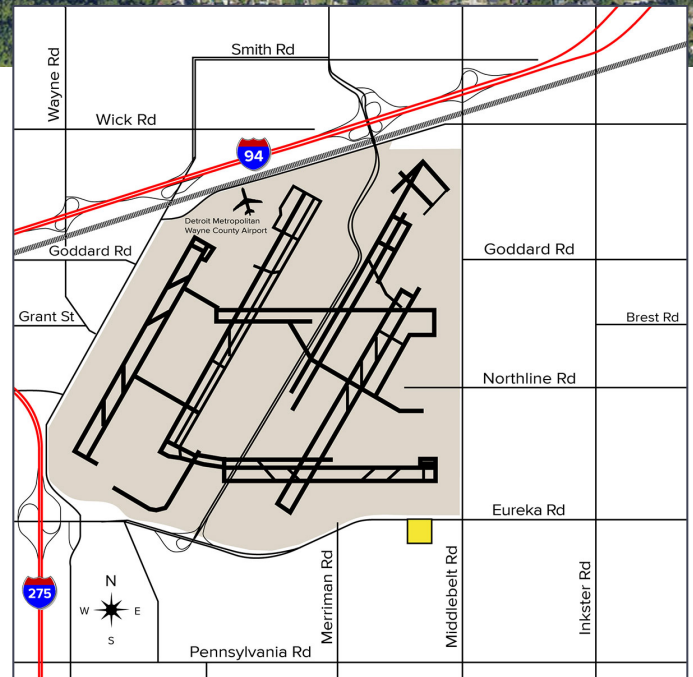


**SIGNATURE
ASSOCIATES**
KNOW SIGNATURE | KNOW RESULTS



PROPERTY FEATURES

- 9.66 acres available
- Great site for Multi-Family development
- Already developed site condo plans, available upon accepted offer
- Water, gas, and sewer available
- Minutes away from Detroit Metro Airport, freeways, shopping, parks, schools and a golf course
- Sale Price: \$875,000 (\$90,579.71/acre)



For more information, please contact:

CHRIS MONSOUR
(248) 948 0107
cmonsour@signatureassociates.com

SIGNATURE ASSOCIATES
One Towne Square, Suite 1200
Southfield, MI 48076
www.signatureassociates.com