



**2275 Westpark Ct.  
Eules, TX 76040**

---

Medical Office Building

**AVAILABLE**



Colton Wallis  
(817) 319-1281  
[colton@bluealphacap.com](mailto:colton@bluealphacap.com)

Cooper Wallis  
(817) 319-8732  
[cooper@bluealphacap.com](mailto:cooper@bluealphacap.com)



## OVERVIEW

Strategically located near Hwy 183 and Westpark Way in the medical district of Hurst - Euless - Bedford.

Brick facade 2nd generation medical office building with new interior renovations, elevator, and abundant parking. Very inviting lobby that has a large skylight bringing in natural light

Located adjacent to Texas Health Methodist HEB and other medical users. Easy access to Hwy 183 and Hwy 121.

*Available:*  
**2275 WESTPARK CT.  
EULESS, TEXAS 76040**







## FEATURES

- 18,125 SF 2nd Gen. Medical Office Building
- **Vacancy:**
  - Suite 100 - 3,004 SF**
  - Suite 101 - 4,874 SF**
  - Suite 102 - 1,070 SF**
  - Suite 200 & 202 - 5,003 SF**
- Newly renovated medical office suites
- On-Site property management/ownership
- Elevator and stairwell in lobby areas with common area restrooms and large skylight
- Convenient access from Hwy 183 and Hwy 121
- Monument signage available & abundant parking
- Located in the medical district of HEB, near Texas Health Methodist HEB and many other medical users and retailers.

*Available:*  
**2275 WESTPARK CT.**  
**EULESS, TEXAS 76040**

## AREA DEMOGRAPHICS

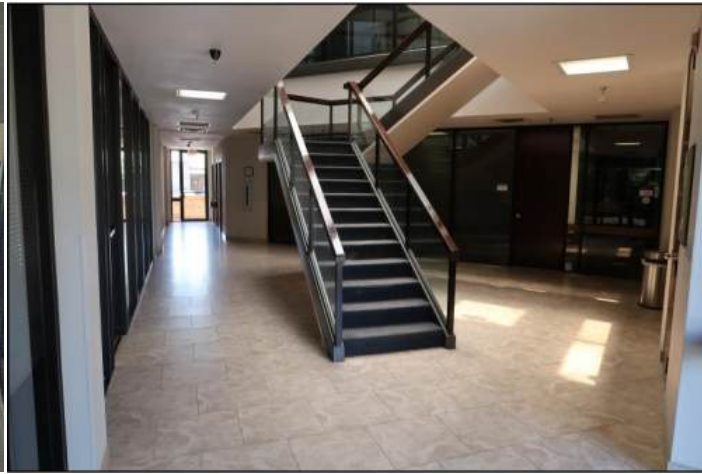
POPULATION	1 MILE	5 MILE	10 MILE
2010 Population	18,950	220,542	882,555
2023 Population	14,828	255,398	978,328

HOUSEHOLD INCOME	1 MILE	5 MILE	10 MILE
2023 AVG. HH Income	\$82,042	\$99,450	\$92,841

## TRAFFIC COUNTS

Westpark Ct.	25,225 VPD
Hwy 121 & 183	240,498 VPD

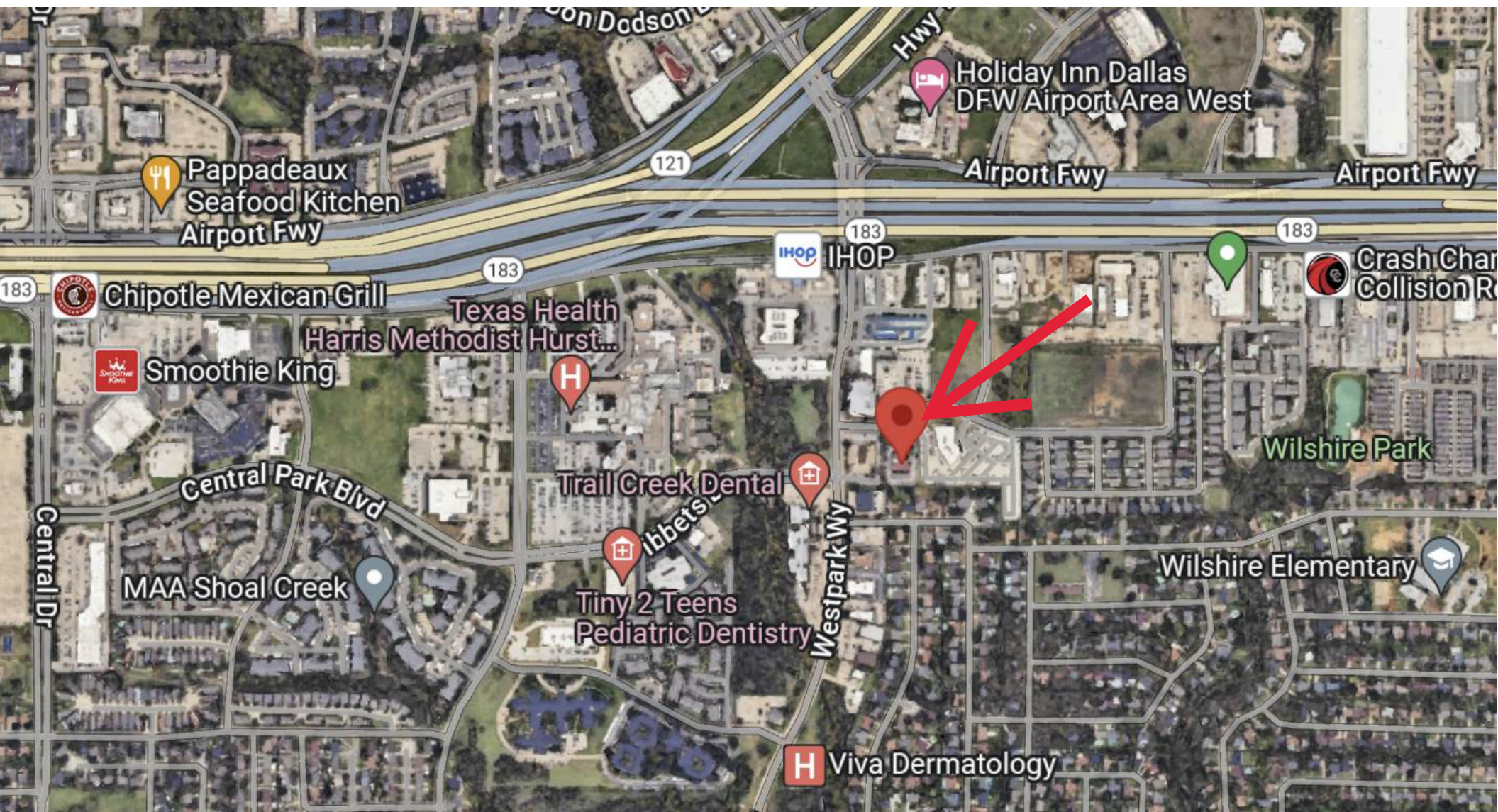




*Available:*  
**2275 WESTPARK CT.  
EULESS, TEXAS 76040**

**PHOTOS**





MAP/LOCATION

# START A CONVERSATION

---

[BLUEALPHACAP.COM](https://bluealphacap.com)

**Colton Wallis**

*Acquisitions and Director  
of Broker Services*

817-319-1281

[colton@bluealphacap.com](mailto:colton@bluealphacap.com)

**Cooper Wallis**

*Senior Associate*

817-319-8732

[cooper@bluealphacap.com](mailto:cooper@bluealphacap.com)

