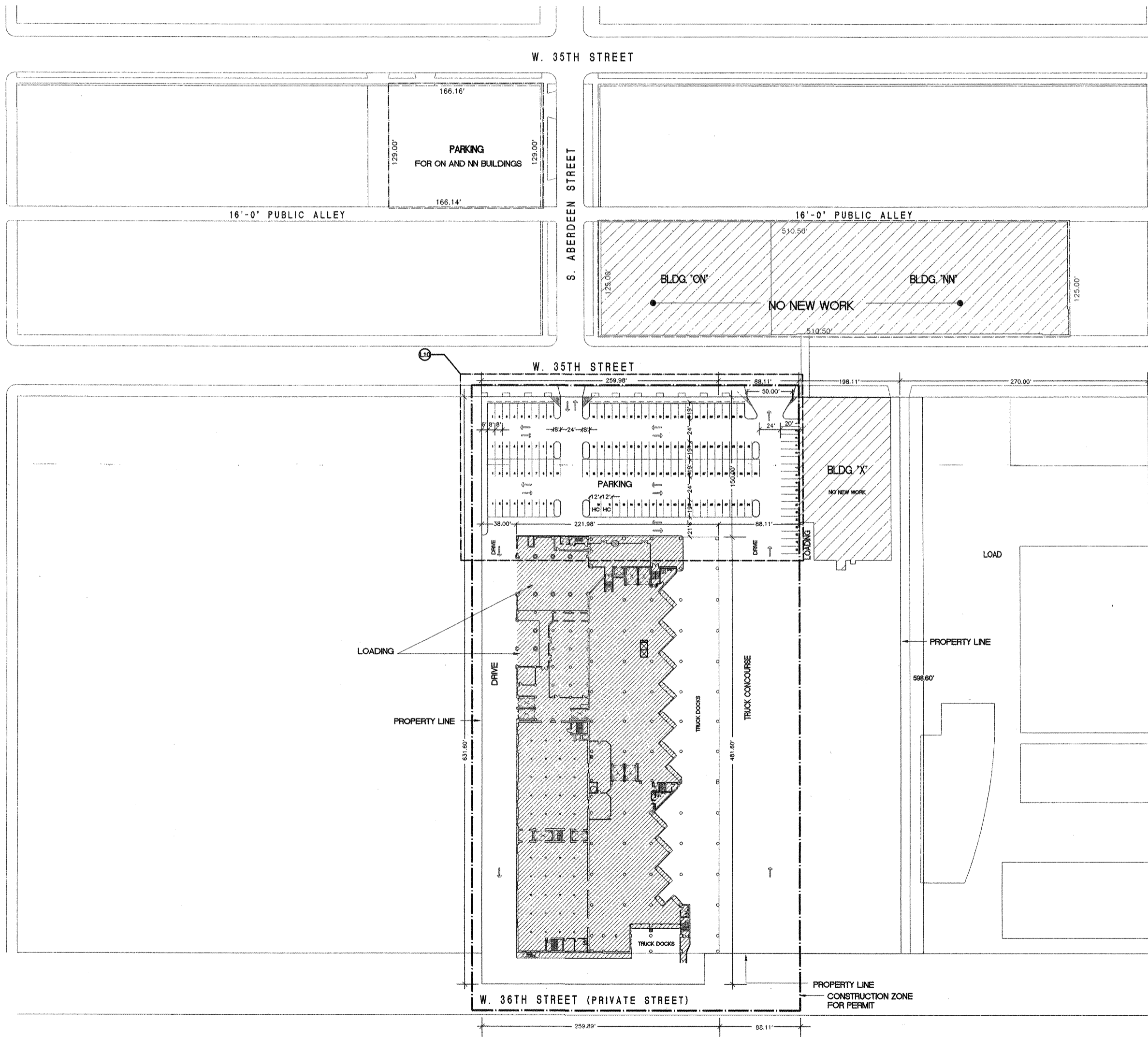


ARCHITECT
DAVID SWAN / ARCHITECT
 410 S. MICHIGAN AVE. SUITE 1022
 CHICAGO, ILLINOIS 60605
 312.939.2458

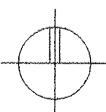
CONSULTANTS:
STRUCTURAL ENGINEERS
BEER, GORSKI & GRAFF LTD.
 228 S. WABASH AVENUE
 CHICAGO, ILLINOIS
 312.939.7007

CONSULTING ENGINEERS
WVA
 Consulting Engineers, Ltd.
 315 South Wabash Ave. - Chicago, IL 60605
 Phone: (312) 786 - 4310 - FAX: (312) 786 - 1123

NOTES:



SITE PLAN
 SCALE: 1" = 50'-0"



REVISIONS:
PERMIT REVISIONS 6.17.97

DRAWN:
 CHECKED:

ISSUED FOR:
 REVIEW DATE:
 BID DATE:
 PERMIT DATE:
 CONSTRUCTION DATE: **6.17.97**

PROJECT NAME:
TRIPPE MFR. CO.
 35TH STREET
 CHICAGO, ILLINOIS

PROJECT #: 53

SHEET TITLE & NUMBER:
SITE PLAN

S1.0

SCALE: AS NOTED