



FOR LEASE



811 @ THE WATERFRONT

Available Office Space: \pm 1,428 SF - \pm 14,844 SF

811 SW Naito Parkway, Portland, OR 97204

Now leasing office space with views of the Willamette River and Mt. Hood at 811 @ The Waterfront. This space is located within easy walking distance from Downtown Portland's plethora of shopping, dining, and entertainment choices. The TriMet Max Line is blocks away, allowing for easy access for commuters throughout the Portland Metropolitan Area.

JEFF FALCONER, SIOR
Principal Broker | Licensed in OR
503-542-4346 | jeff@capacitycommercial.com

MCCOY DOERRIE, SIOR
Senior Vice President | Licensed in OR & WA
503-523-7751 | mccoy@capacitycommercial.com

GABRIEL BEHRMANN
Associate Broker | Licensed in OR
971-237-2458 | gabriel@capacitycommercial.com



PROPERTY SUMMARY



PROPERTY DETAILS

Address	811 SW Naito Parkway, Portland, OR 97204
Total SF Available	±30,311 SF
Parking	Garage and Surface Parking Available
Lease Rate	\$25.00 / SF Full Service
Additional Features	<ul style="list-style-type: none">• Ideal for Creative Firms• Executive Fitness Center with Showers

AVAILABILITIES

Suite 220	± 2,984 SF *Combinable with Suite 250 for ±6,224 Total SF
Suite 250	± 3,240 SF *Combinable with Suite 220 for ±6,224 Total SF
Suite 300	± 5,341 SF
Suite 350	± 3,279 SF
Suite 600	± 5,593 SF
Suite 608	± 1,428 SF



PHOTO LIBRARY

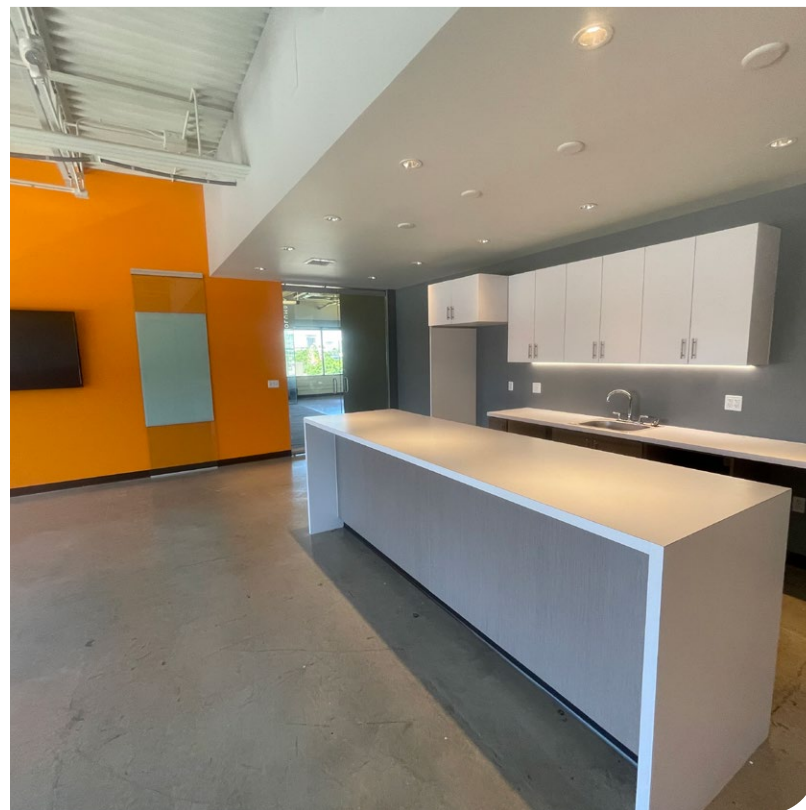
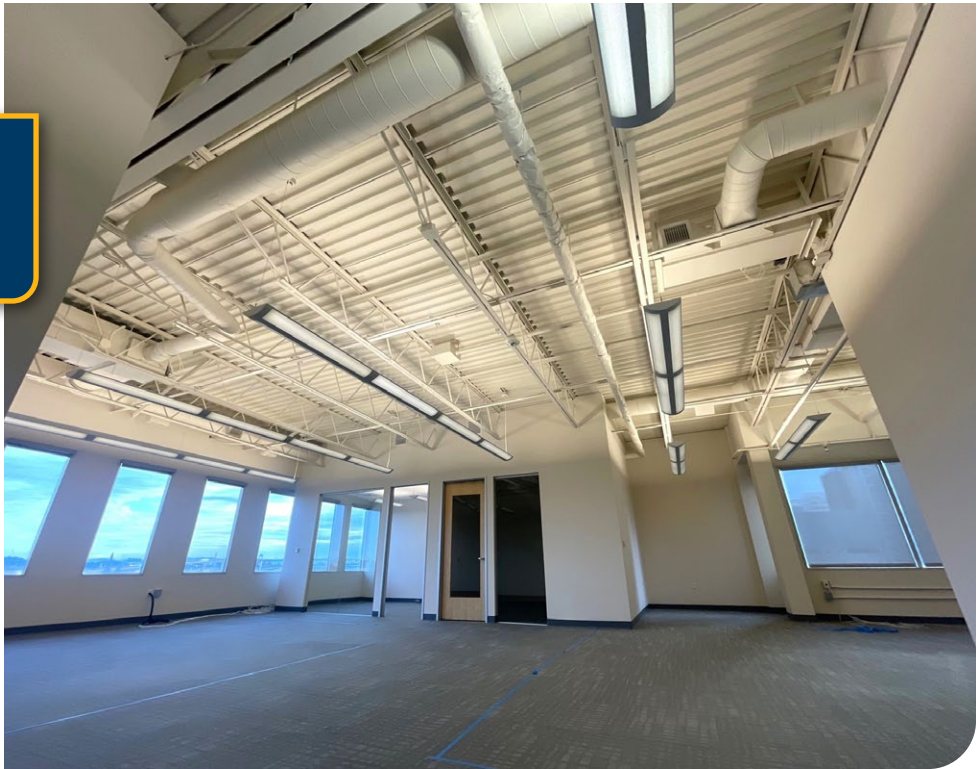


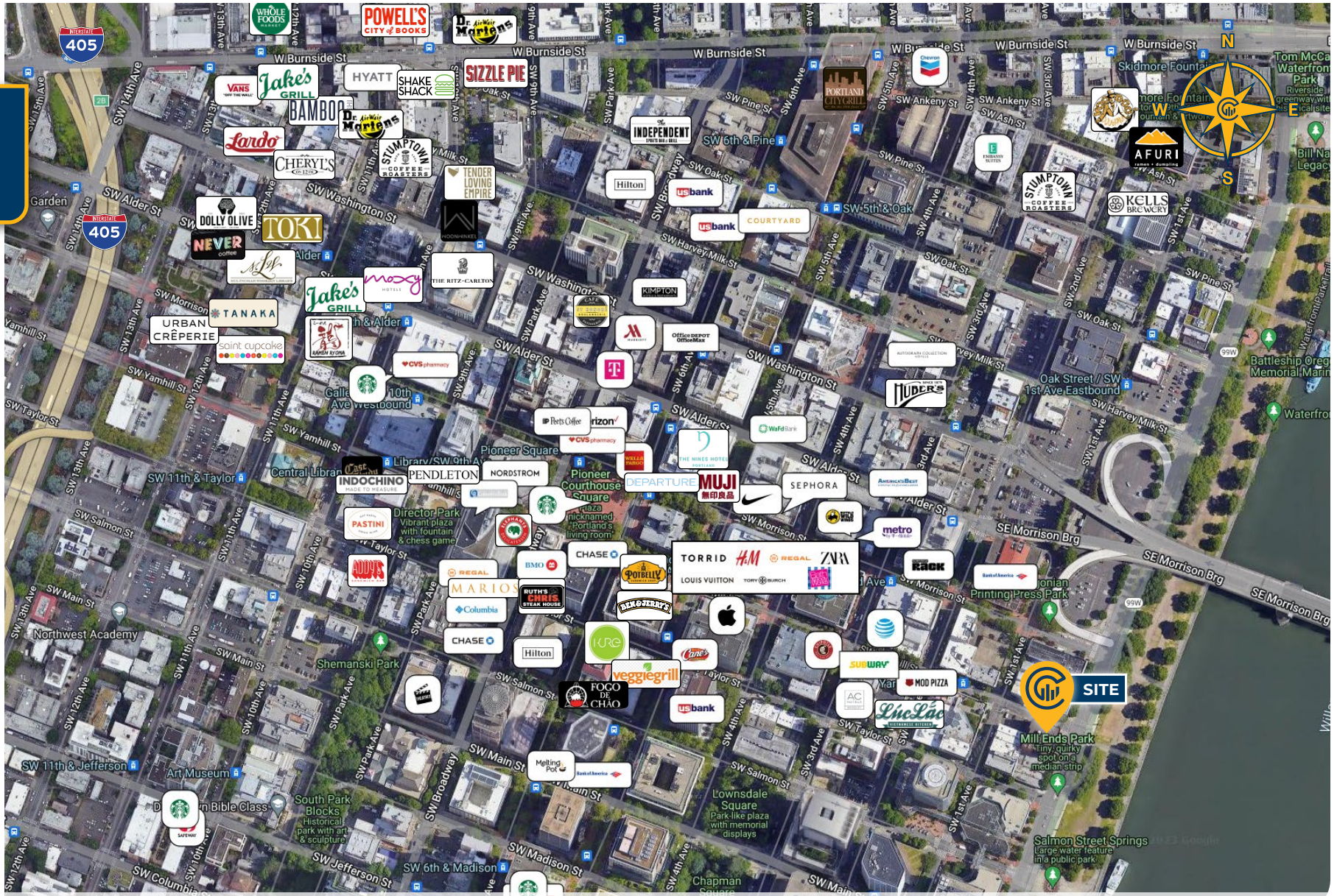


PHOTO LIBRARY





LOCAL AERIAL



Average Daily Traffic Volume | Traffic Counts are Provided by REGIS Online at SitesUSA.com ©2024 | Map data ©2024 Google Imagery ©2024, Airbus, CNES / Airbus, Maxar Technologies, Metro, Portland Oregon, Public Laboratory, State of Oregon, U.S. Geological Survey, USDA/FPAC/GEO

JEFF FALCONER, SIOR
Principal Broker | Licensed in OR
503-542-4346
jeff@capacitycommercial.com

MCCOY DOERRIE
Sr. Vice President | Licensed in OR & WA
503-523-7751
mccoy@capacitycommercial.com

GABRIEL BEHRMANN
Associate Broker | Licensed in OR
971-237-2458
gabriel@capacitycommercial.com