

FOR SUBLEASE
4300 S US HWY 281
Pleasanton, TX 78064



52,187 RSF ON 51.51 ACRES
AVAILABLE



Sublease
Expiration Date:
April 30, 2042

PROPERTY FEATURES



52,187 RSF

TOTAL BUILDING SIZE

51.51 ACRES

TOTAL SITE SIZE

**CALL BROKERS
FOR RATE**

LEASE RATE

SMALL WAREHOUSE

2,037 SF

OFFICE SPACE
AVAILABLE

Two (2) 12' x 12'

OVERHEAD DOORS

12' to 15'

CLEAR HEIGHT

Fluorescent

LIGHTING

LARGE WAREHOUSE

One (1) 16' x 12'

One (1) 30' x 12'

OVERHEAD DOORS

5-Ton

CRANE

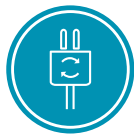
17' to 22'

CLEAR HEIGHT

Fluorescent

LIGHTING

PROPERTY HIGHLIGHTS



**3-PHASE
POWER**



**100%
CLIMATE
CONTROLLED**



**FULLY
INSULATED
BUILDING**



**DOCK & GRADE
LEVEL DOORS**

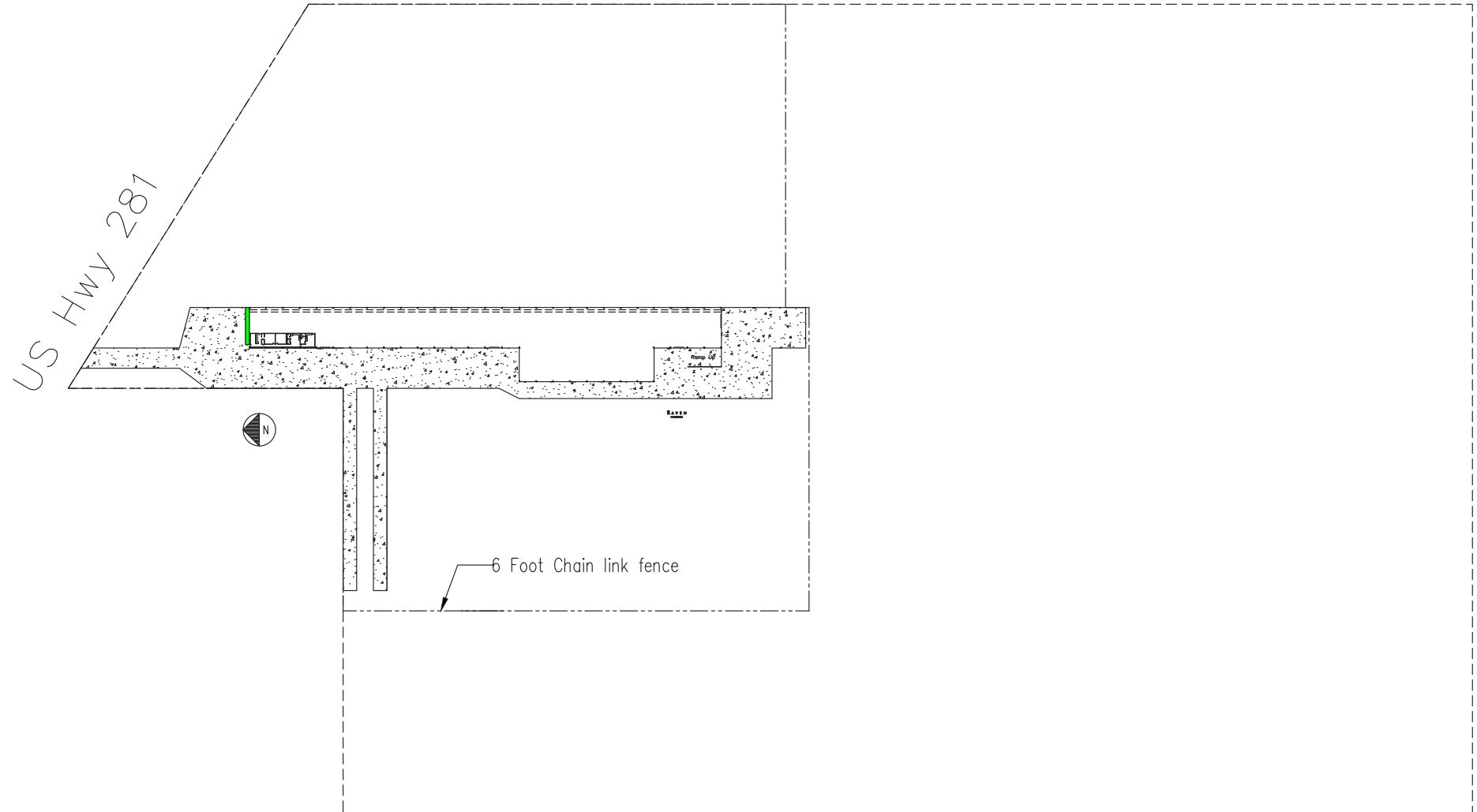


**PERIMETER
FENCING**

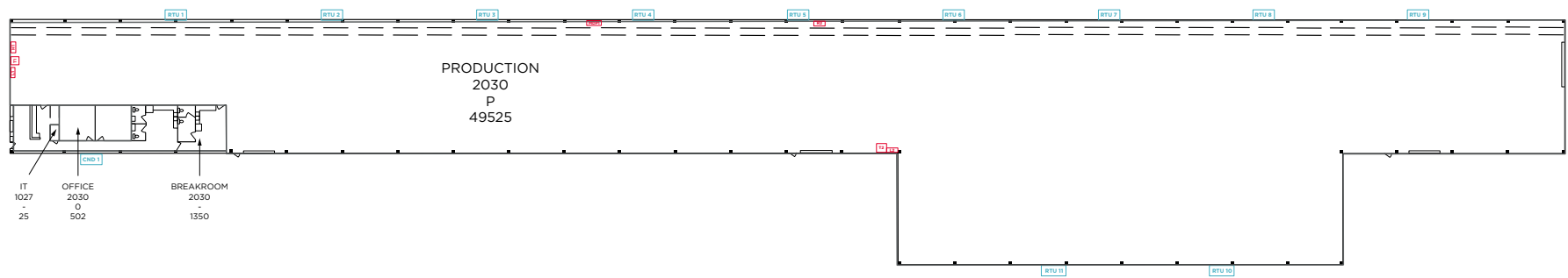


**US HWY 281
FRONTAGE**

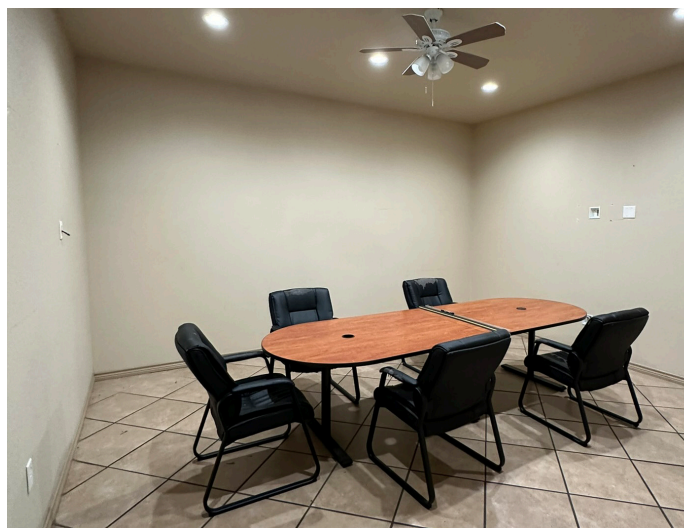
PROPERTY SITE PLAN



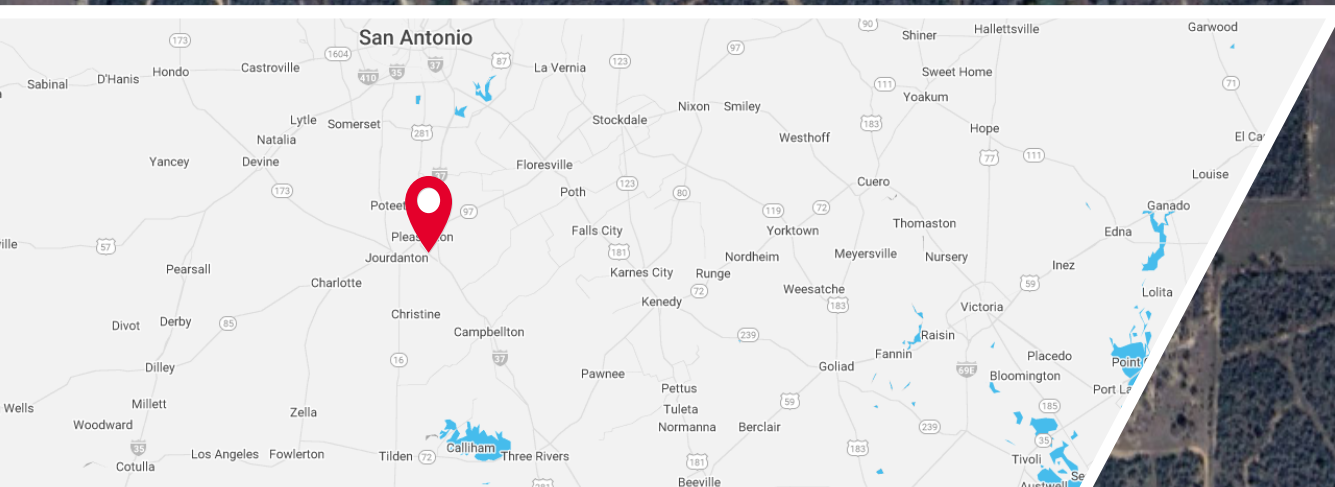
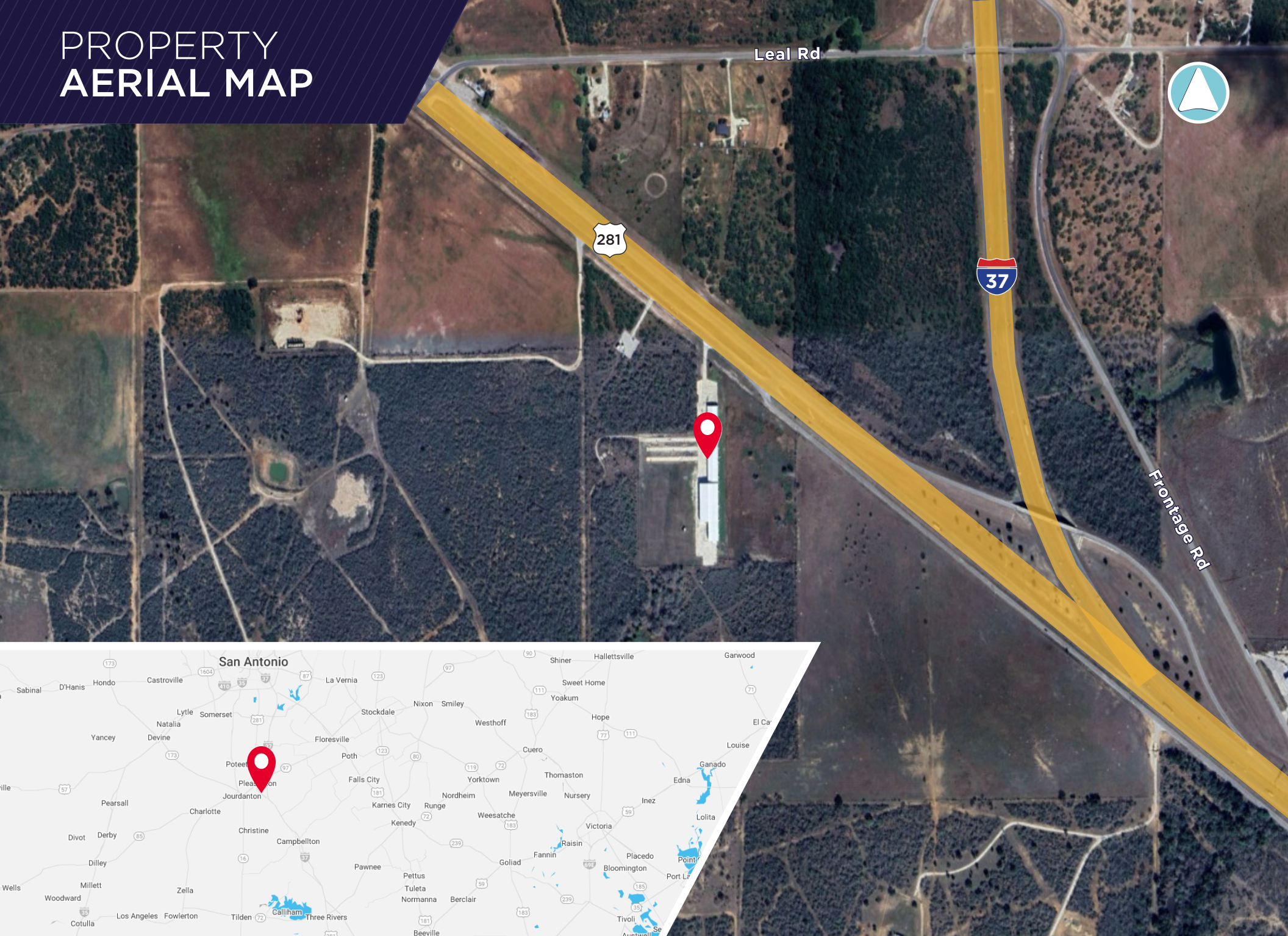
PROPERTY FLOOR PLAN



PROPERTY PHOTOGRAPHY



PROPERTY AERIAL MAP





Carlos Marquez, SIOR
Senior Director
+1 210 896 2525
carlos.marquez@cushwake.com

Sergio Acosta
Senior Director
+1 210 305 4284
sergio.acosta@cushwake.com