

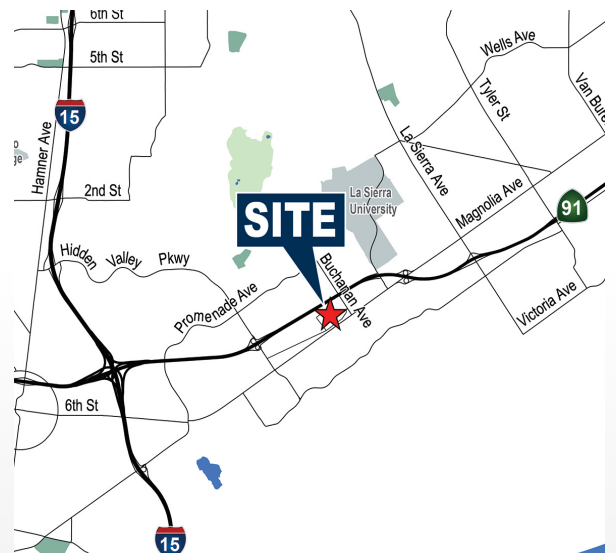




FOR LEASE

- ±23,380 SF Freestanding Building
- ±4,123 SF Two -Story Office Space
- ±5,000 SF of HVAC Production Area
- ±24' Warehouse Clearance (verify)
- 2 Ground Level Doors (12'X14')
- 1 Ground Level Door (25'x14')
- Fire Sprinklers
- Fenced Yard
- M-2 Industrial Zoning (verify)
- Immediate Access to  &  Freeway



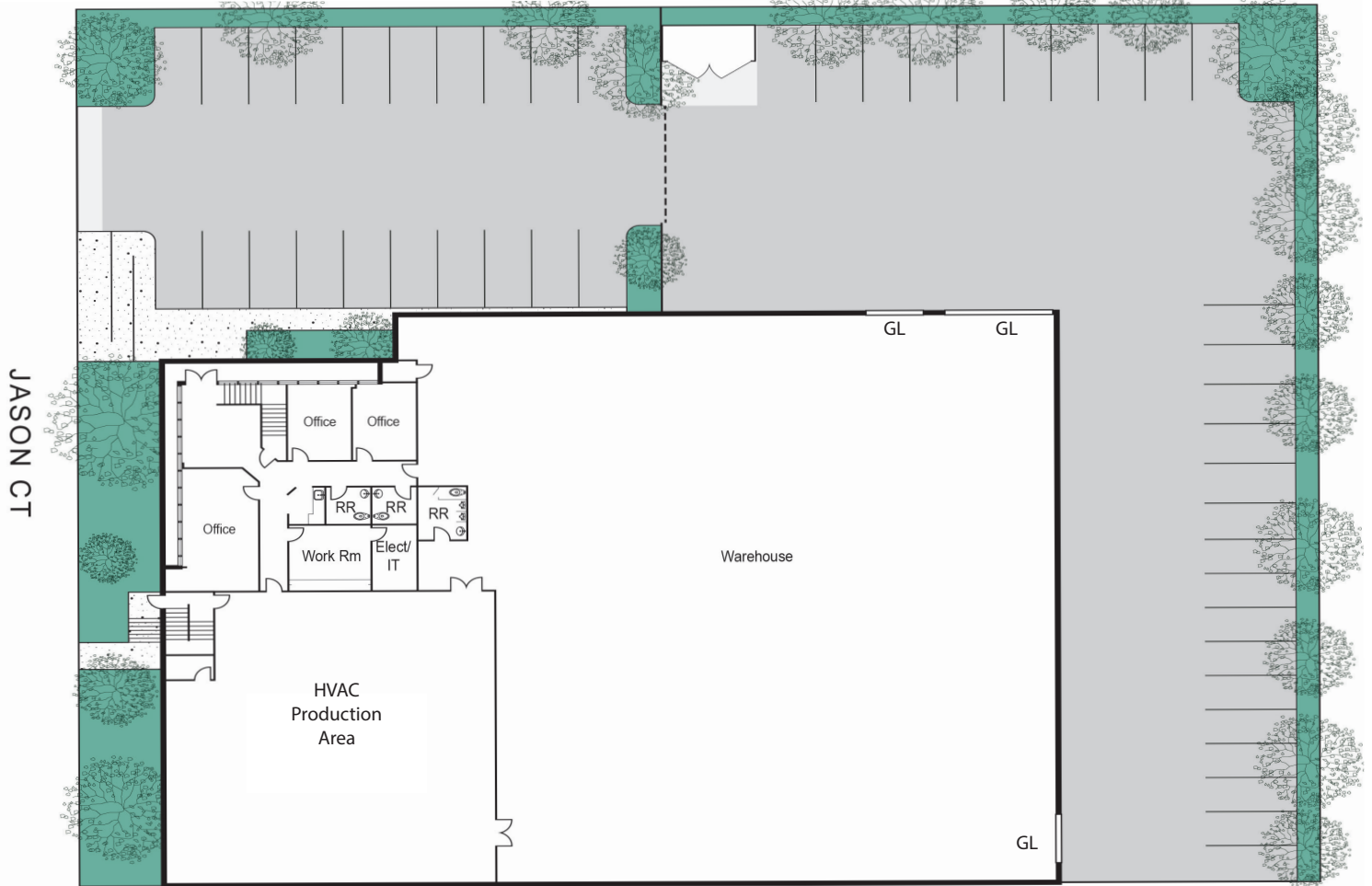
RYAN MOORE
Senior Vice President | Partner
909.545.8011
RMoore@voitco.com
Lic#01821438

GARRET GILLILAND
Vice President
714.267.0051
GGilliland@voitco.com
Lic#02075196

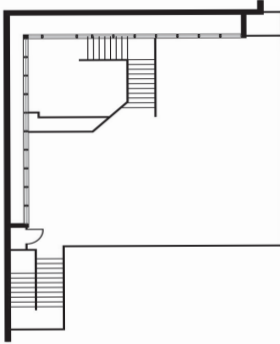
Voit
REAL ESTATE SERVICES

FOR LEASE - ±23,380 SF

235 JASON CT, CORONA, CA



2nd Floor



RYAN MOORE
Senior Vice President | Partner
909.545.8011
RMoore@voitco.com
Lic#01821438

GARRET GILLILAND
Vice President
714.267.0051
GGilliland@voitco.com
Lic#02075196

Voit
REAL ESTATE SERVICES