

# AS-BUILT FLOOR PLAN

1147 GEORGIA AVENUE  
NORTH AUGUSTA, SOUTH CAROLINA

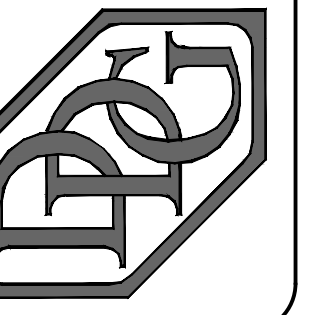
DRAWING INDEX	
SHEET #	NAME
A-0.1	COVER SHEET
A-1.1	AS-BUILT FLOOR PLAN - MAIN FLOOR
A-1.2	AS-BUILT FLOOR PLAN - BASEMENT AND SECOND FLOOR

# SHERMAN & HEMSTREET

3523 WALTON WAY EXT. - AUGUSTA, GEORGIA 30909

Ph: (706) 722-8334 Fax: (706) 722-1111

DEFINITIVE  
DESIGNS  
GROUP INC.  
TEL: (706) 860-8901 FAX: (706) 860-2484  
4270 BELAIR FRONTAGE RD  
AUGUSTA, GA 30904



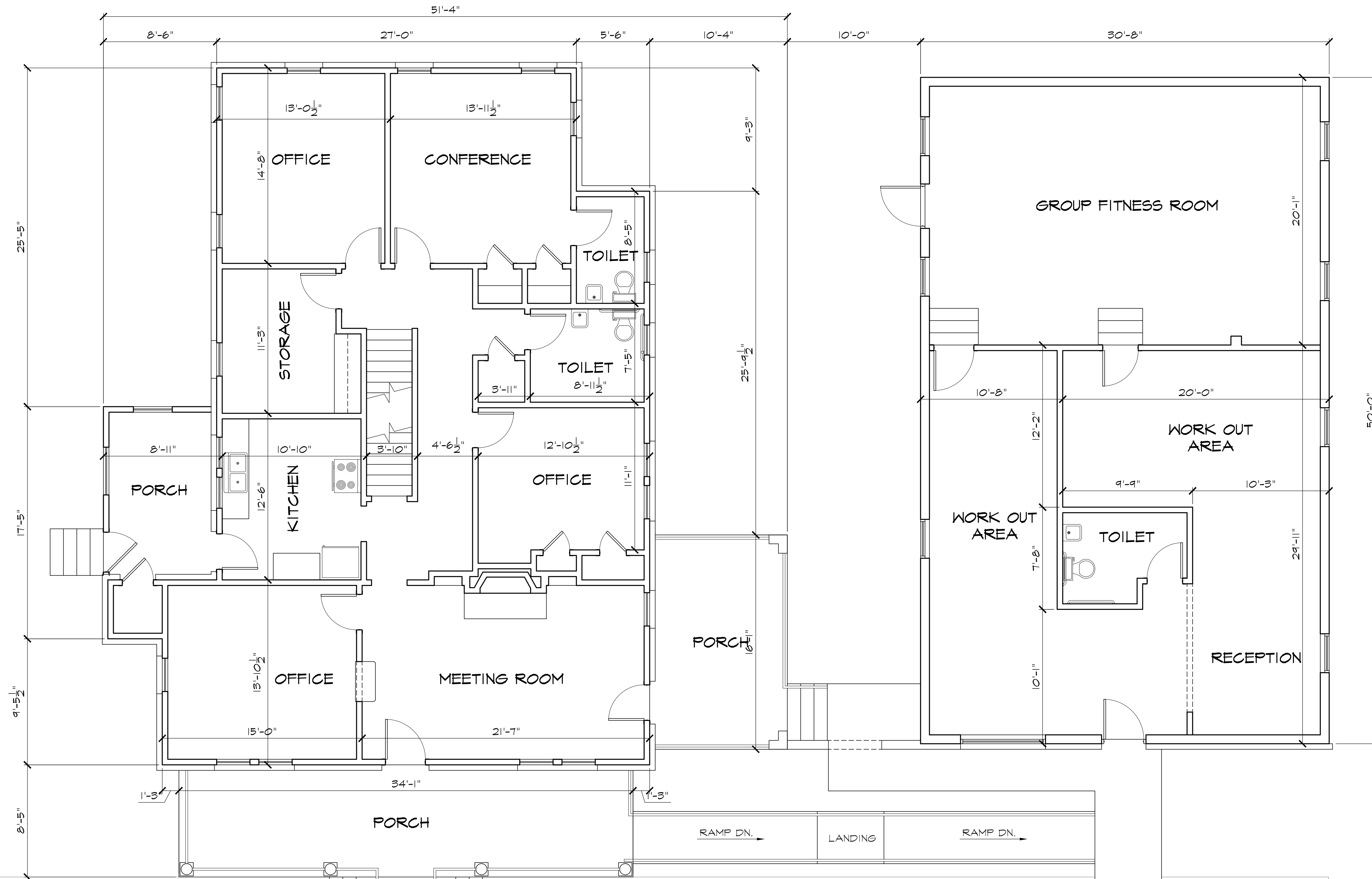
PREPARED FOR:  
SHERMAN &  
HEMSTREET  
3523 WALTON WAY EXT.  
AUGUSTA, GEORGIA 30909

PROJECT TITLE:  
AS-BUILT  
FLOOR PLANS  
1147 GEORGIA AVENUE  
NORTH AUGUSTA, SOUTH CAROLINA  
COVER SHEET

NO.	REVISION / ISSUE	BY	DATE

DATE: 7-4-2013  
DRAWN BY: DAN  
CHECKED BY: 1

SHEET #  
A-0.1



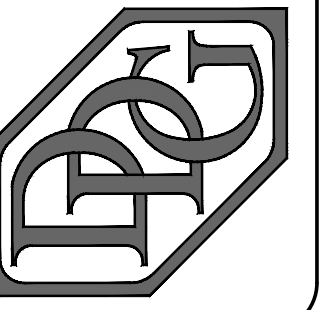
FIRST FLOOR SQUARE FOOTAGE - THIS BUILDING: 1903 (EXCLUDING PORCH AREAS)

FIRST FLOOR SQUARE FOOTAGE - THIS BUILDING: 1533

**AS-BUILT FLOOR PLAN - MAIN FLOOR**

SCALE: 1/4" = 1'-0"

**DEFINITIVE  
DESIGNS  
GROUP INC.**  
TEL # (706)860-8807 FAX # (706)860-2468  
4270 BELAIR FRONTAGE RD  
AUGUSTA, GA 30904



PREPARED FOR:  
**SHERMAN &  
HEMSTREET**  
3523 WALTON WAY EXT.  
AUGUSTA, GEORGIA 30904

PROJECT TITLE:  
**AS-BUILT  
FLOOR PLANS**  
1147 GEORGIA AVENUE  
NORTH AUGUSTA, SOUTH CAROLINA  
AS-BUILT FLOOR PLAN - MAIN FLOOR

NO.	REVISION / ISSUE	BY	DATE

DATE: 7-4-2013  
DRAWN BY: DAN  
CHECKED BY: 1

SHEET #  
**A-1.1**

