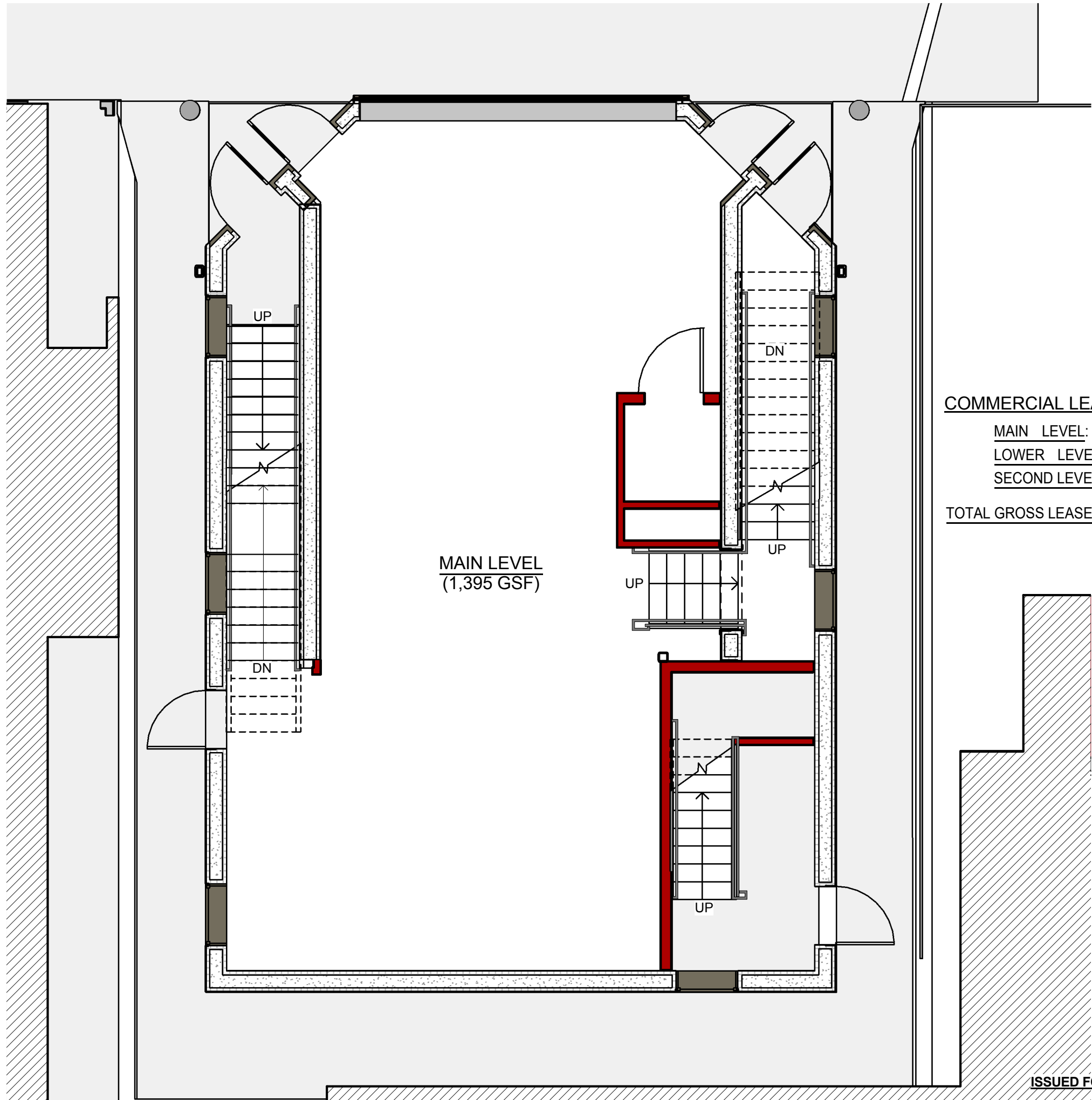




© 2022 JNM, II - ARCH

Joseph N. McPhee, II - Architect
20 Westwood Road, Lincoln, RI 02865
† RASFORM
401.632.7255 jmcphgearchitect@cox.net



COMMERCIAL LEASE AREAS:

MAIN LEVEL:	1,460	GSF
LOWER LEVEL:	1,395	GSF
SECOND LEVEL:	1,115	GSF
TOTAL GROSS LEASE AREA:	3,970	GSF

MAIN LEVEL
(1,395 GSF)

New 4 St Mixed-Use Infill Building
PHASE I
BASE BUILDING w/ 3rd & 4th APARTMENTS
235 MEETING STREET, PROVIDENCE, RI

Main Floor Plan
Project No.: Project Number
Dwg Date/Rel.Date: 03/28/24
Drawn by: JNM, II Checked by: JNM, II