



## For Sale or Lease

22,664 Square Foot  
Industrial Building  
Bloomfield, Connecticut

16  
SOUTHWOOD  
DRIVE



- TWO LOADING DOCKS AND A 10' X 14' DRIVE-IN DOOR
- CLOSE ACCESS TO TWO EXITS ON INTERSTATE 91
- LOCATED IN AN INDUSTRIAL PARK

- NICELY BUILT OUT 2,025 SQUARE FEET OF MEZZANINE OFFICE SPACE
- THE BUILDING IS FOR SALE FOR \$1,800,000
- THE BUILDING IS FOR LEASE FOR \$8.00 NNN

For additional information, please contact

Rich Correia

860 305-5622  
rcorreia@rmbradley.com

RM Bradley  
225 Asylum Street  
Hartford, CT 06103  
860 278-2040



RM Bradley

COMMERCIAL BROKERAGE  
PROPERTY MANAGEMENT

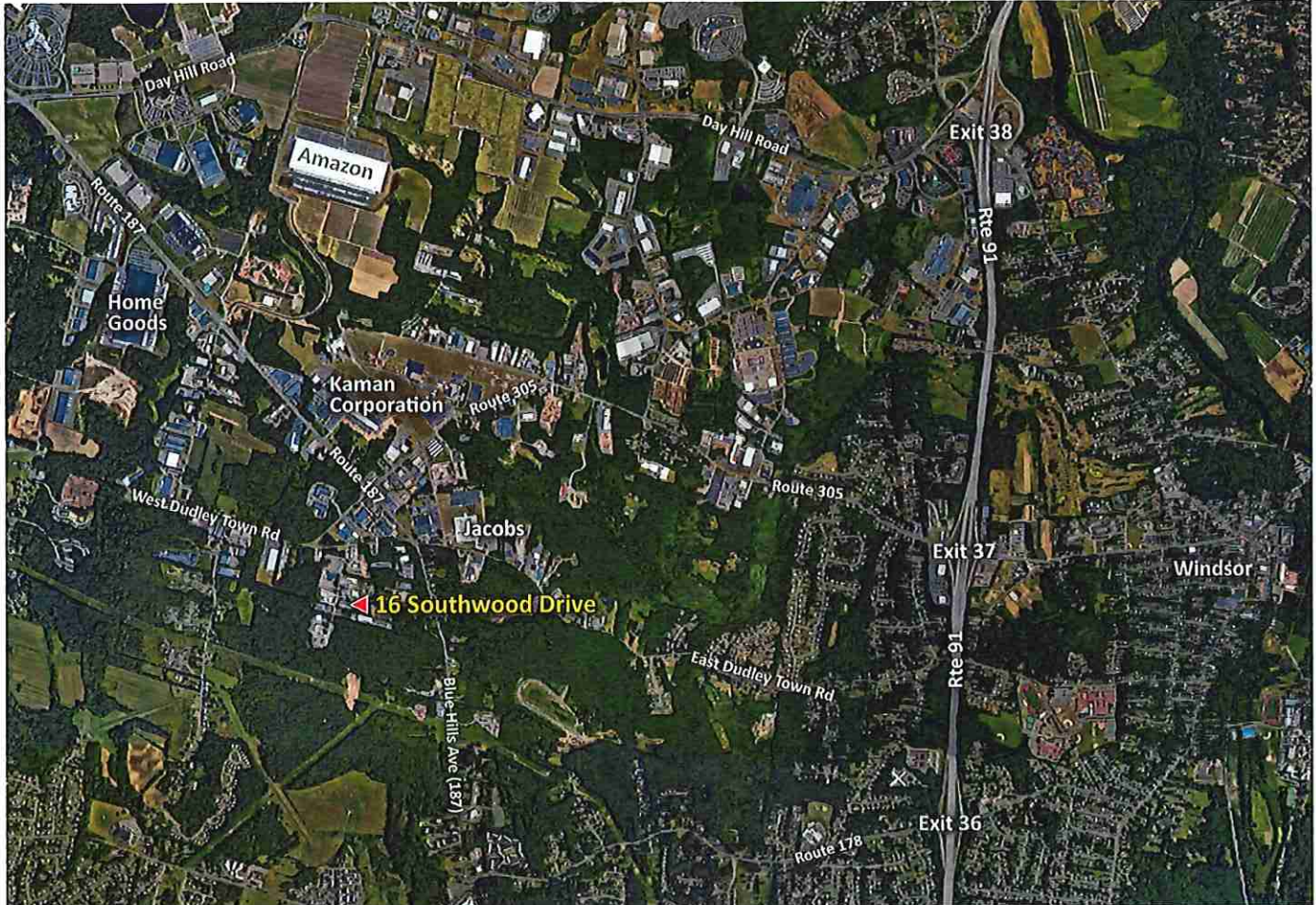




## For Sale or Lease

22,664 Square Foot  
Industrial Building  
Bloomfield, Connecticut

# 16 SOUTHWOOD DRIVE



### PROPERTY FACTS

PROPERTY TYPE: INDUSTRIAL

SQUARE FOOTAGE: 22,664

ACREAGE: 1.83 ACRES

ZONING: I-2

WATER: MDC

HVAC: GAS (PARTIAL AC)

LOADING DOCKS: TWO

DRIVE-INS: 1 10' x 14'

CLEAR HEIGHT: VARIES

(15'3", 18'10" AND 22'+)

YEAR BUILT: 1976

MEZZANINE OFFICE: 2,025 SQ. FT.

FIRST FLOOR OFFICE: 1,500 SQ. FT.

HIGH BAY: ROUGHLY 5,150 SQ. FT.

All information contained herein is from sources deemed reliable and is submitted subject to errors, omissions, changes of other terms and conditions, prior sale, lease or financing or withdrawal without notice. No warranty or representation, expressed or implied is made as to the accuracy of the information and is subject to changes, withdrawal without notice and to conditions within the listing with our principals.

For additional information, please contact

**Rich Correia**

860 305-5622  
rcorreia@rmbradley.com

RM Bradley  
225 Asylum Street  
Hartford, CT 06103  
860 278-2040



**RM Bradley**  
COMMERCIAL BROKERAGE  
PROPERTY MANAGEMENT