



Accelerating success.

For Sale

Last Parcels in Southlake Park

±5 Acres, City of Hoover

4575 Southlake Parkway
Hoover, AL 35244

Tripp Alexander, CCIM, SIOR

Partner

+1 205 552 4343

tripp.alexander@colliers.com

Jack Peterson, CPM

Senior Director

+1 205 401 0101

jack.peterson@colliers.com

Property Overview

- | | |
|-------------|---|
| Description | <ul style="list-style-type: none">• ±4.99 acre land parcel• 2 adjacent platted lots of Southlake Office Park• Site is fully entitled and ready for development• N. Shelby County (Hoover), AL• Rare undeveloped land inside the Southlake Office Park |
|-------------|---|

Address	4575 Southlake Parkway, Hoover, AL 35244
---------	--

Zoning	PO; Planned Office (City of Hoover)
--------	-------------------------------------

Tax Parcels	104200001009014 & 104200001009015
-------------	-----------------------------------

Property Survey



Utilities

All utilities surround the site.

Zoning

Planned Office (PO), City of Hoover.

Additional conditional uses: Senior living/retirement communities, independent living facilities, and assisted living facilities.

Location

Last parcels in Southlake Park, a class "A" mature office park in preferred over-the-mountain N. Shelby County. Easy access from I-65 (Exit 247), all retail services at signaled entry into Park. Potential for brow signage visibility from I-65.

Price

\$995,000

Location Map



Colliers

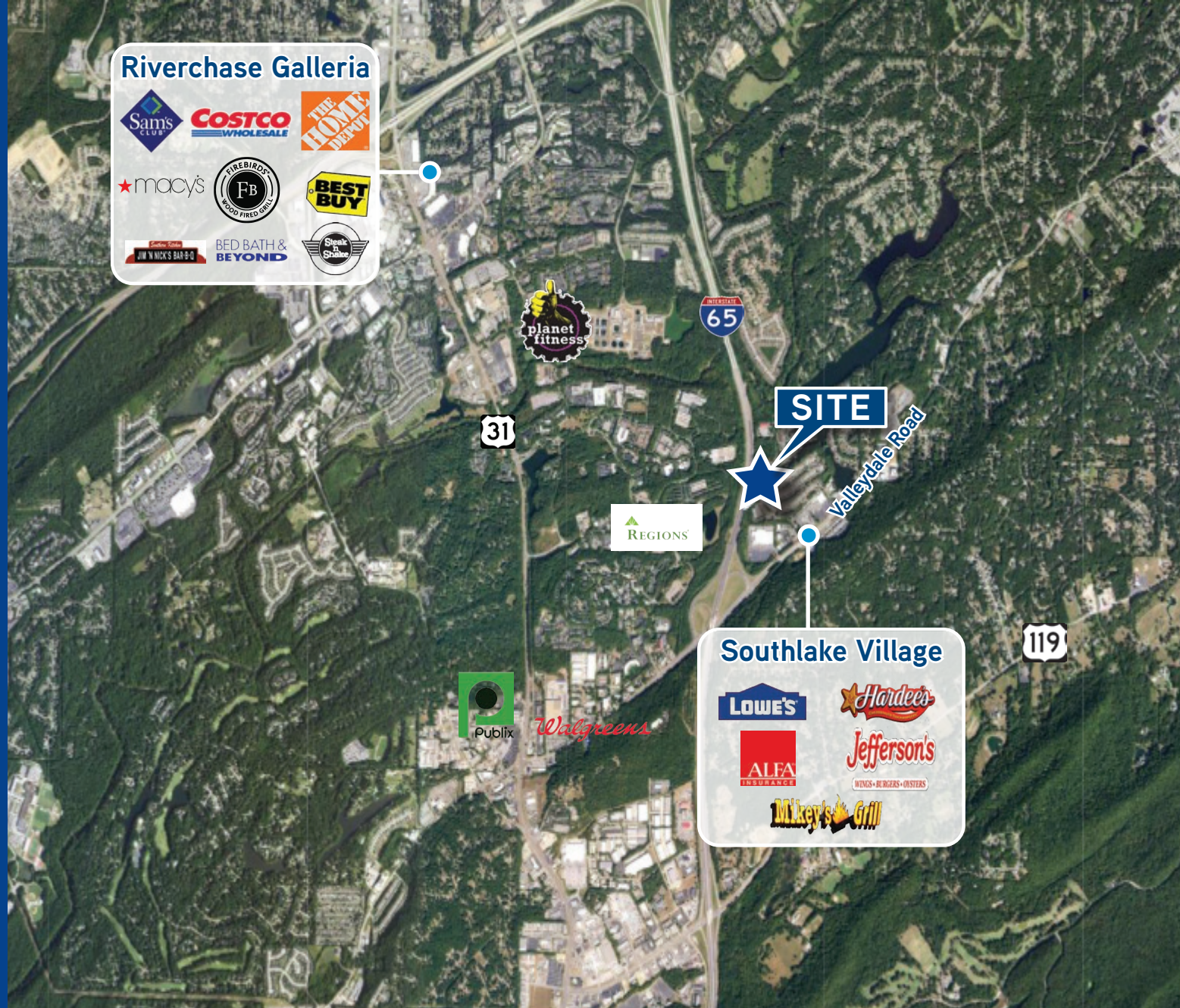
880 Montclair Road, Suite 250
Birmingham, AL 35213
P: +1 205 445 0955
F: +1 205 445 0855
colliers.com/alabama

Tripp Alexander, CCIM, SIOR

Partner
+1 205 552 4343
tripp.alexander@colliers.com

Jack Peterson, CPM

Senior Director
+1 205 401 0101
jack.peterson@colliers.com



This document has been prepared by Colliers International for advertising and general information only. Colliers International makes no guarantees, representations or warranties of any kind, expressed or implied, regarding the information including, but not limited to, warranties of content, accuracy and reliability. Any interested party should undertake their own inquiries as to the accuracy of the information. Colliers International excludes unequivocally all inferred or implied terms, conditions and warranties arising out of this document and excludes all liability for loss and damages arising there from. This publication is the copyrighted property of Colliers International and/or its licensor(s). ©2022. All rights reserved.