

350 Enfield Street Enfield, CT 06083

±5.71 Acre Industrial Zoned Site For Sale

350 Enfield Street is a ±5.71 acre parcel of I1 Industrial zoned land. The subject parcel is nearly 90% designated wetlands soils and has a stream that extends east and west through the center. The property is improved with three concrete water lagoons toward the center of the parcel that are no longer in use. There is potential for limited development usable area of the parcel is 30,000-35,000 SF.

Features

- ±5.71 acre site
- I1 industrial zoned
- 100% level
- Business friendly location
- Majority wetlands
- Price reflective of usable land

Copyright © 2021 Colliers International. Information herein has been obtained from sources deemed reliable, however its accuracy cannot be guaranteed. The user is required to conduct their own due diligence and verification.

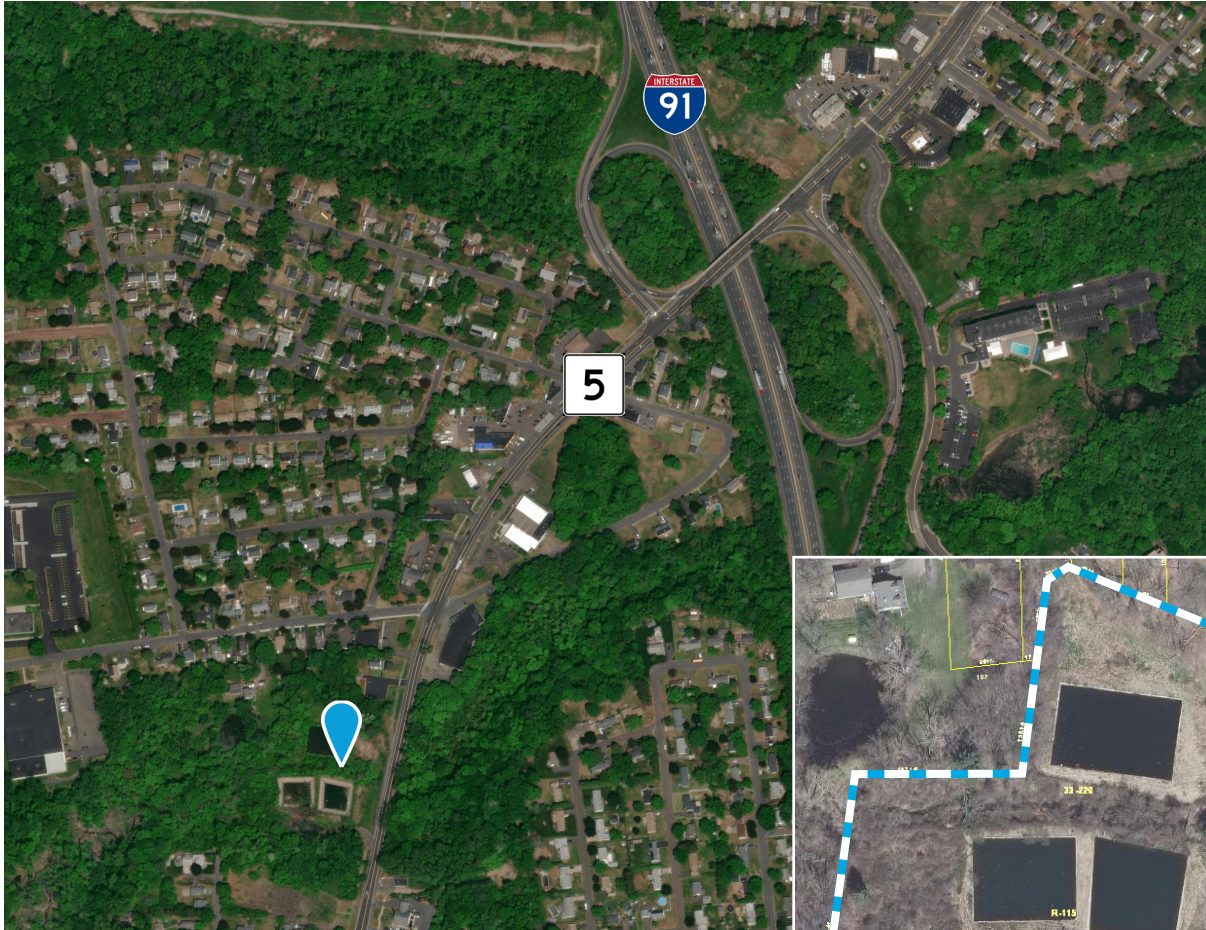
Sale Price
\$39,900

Contact:

Nicholas Morizio, CRE, SIOR
860 616 4022
nicholas.morizio@colliers.com

Colliers International
864 Wethersfield Avenue
Hartford, CT 06114
860 249 6521
colliers.com/hartford

Location



Demographics

	2024 POP	2024 HH	Avg HH\$
1 Mile	5,480	2,240	\$94,175
3 Miles	38,499	14,987	\$109,867
5 Miles	93,827	35,493	\$113,334



Contact:

Nicholas Morizio, CRE, SIOR
860 616 4022
nicholas.morizio@colliers.com

864 Wethersfield Avenue
Hartford, CT 06114
860 249 6521 Main

colliers.com/hartford