

FOR LEASE
OFFICE SPACE



THE 888 BUILDING

888 NW Hill Street | Bend, OR 97703



Located in one of Bend's most desirable west side locations, Suite 1 at 888 NW Hill Street offers approximately 1,830 RSF of professionally updated office space. This suite features a clean, modern look with recent improvements and an efficient layout ideal for a variety of professional uses. Conveniently situated near downtown Bend and the Old Mill District, this location provides quick access to city offices, the courthouse, and numerous west side amenities.

Lease Rate: \$1.49/SF/Mo NNN

- 1,830 +/- rentable square feet
- Estimated CAM: \$0.49/RSF/month
- Recently renovated with:
- New carpet
- Fresh paint
- Non-reflective lighting
- New flooring throughout
- Two (2) private restrooms

Tom Tapia, CCIM, Principal Broker

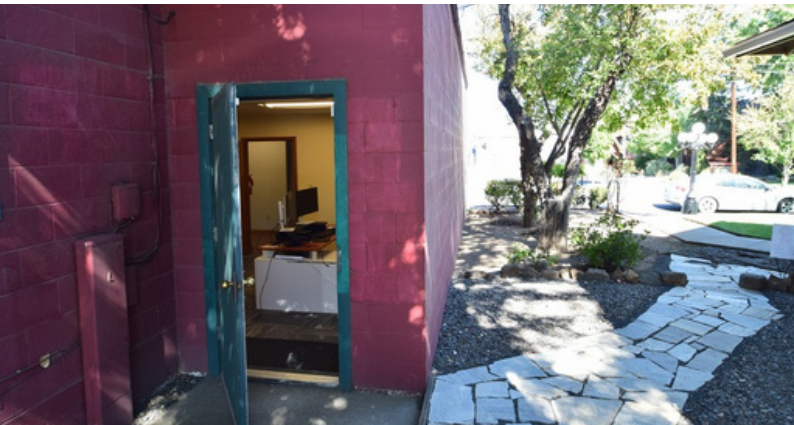
tom@fratcommercial.com | C 541.390.2900

Brian Fratzke, CCIM, Principal

brian@fratcommercial.com | C 541.480.2526



963 SW Simpson Ave., Suite 220 | Bend, OR 97702
541.306.4948 | www.fratzkecommercial.com



BRIAN FRATZKE
CCIM, PRINCIPAL
541.480.2526[C]
BRIAN@FRATCOMMERCIAL.COM



TOM TAPIA
CCIM, PRINCIPAL
541.390.2900[C]
Tom@FRATCOMMERCIAL.COM



FRATZKE
COMMERCIAL REAL ESTATE

With You Every Square Foot of the Way.