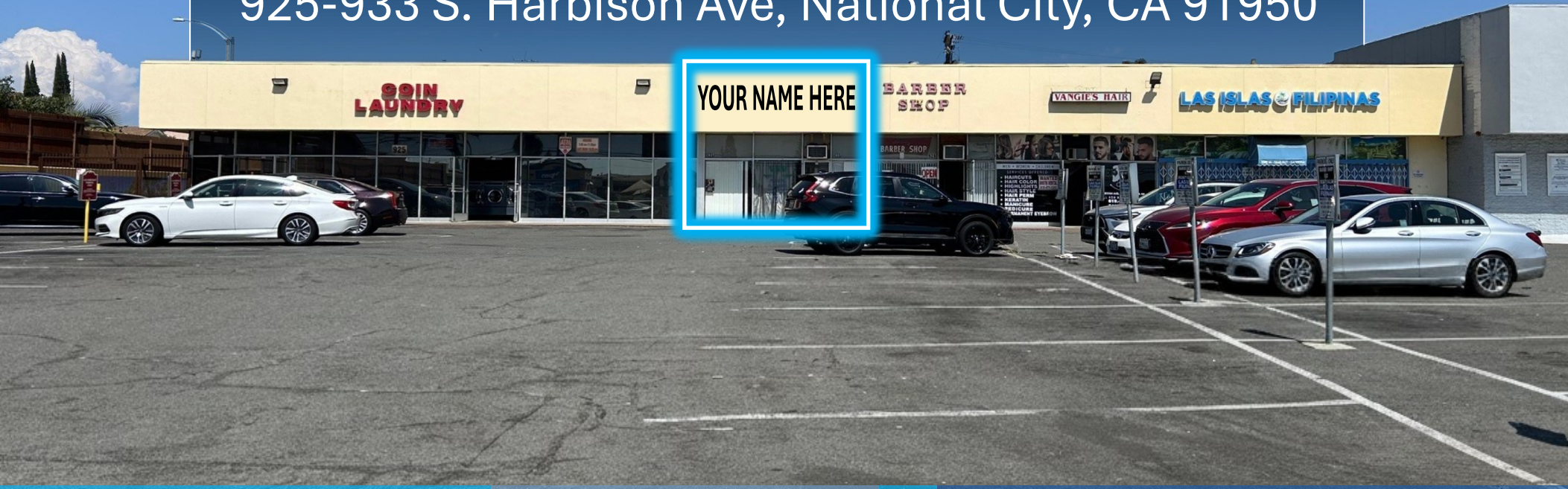


**FOR LEASE**

# RETAIL SUITE WITH ABUNDANT PARKING

925-933 S. Harbison Ave, National City, CA 91950



**BLANCHE GOLIA**

Senior Advisor - Sales & Leasing  
Blanche@PacificCoastCommercial.com  
Lic. 01956233

**SHIRLEY KANAMU**

Senior Advisor - Sales & Leasing  
Shirley@PacificCoastCommercial.com  
Lic. 01268281

**VALLEY COLEMAN**

Sales & Leasing Associate  
Valley@PacificCoastCommercial.com  
Lic. 02065336

**CHASE PELTON**

Sales & Leasing Advisor  
Chase@PacificCoastCommercial.com  
Lic. 01918260

**PACIFIC COAST COMMERCIAL** | Office (619) 469-3600 | 10721 Trenea St., Ste 200 | [www.PacificCoastCommercial.com](http://www.PacificCoastCommercial.com) | Lic. 01209930

The information in this brochure is provided for general marketing purposes only and is believed to be reliable but not guaranteed. Interested parties should verify all details independently, including zoning, measurements, and property condition. The property owner and agents make no warranties or representations and reserve the right to change or withdraw the property or terms at any time without notice. This is not an offer or contract.

## PROPERTY SUMMARY

**Available:**

Suite 927:  $\pm$  970 SF Retail

**LOT SF:**

$\pm$  27,000 SF

**Parking:**

37 Onsite Parking Spaces (5/1,000)

**Lease Rate:**

\$1.40/SF NNN

## PROPERTY FEATURES

**Traffic Counts:**  $\pm$  21,475 Cars per Day on E. Plaza Blvd.

**High Density Population:** 218,000 / 3-mile Radius

**Signage:** Building Signage Available 471.5261

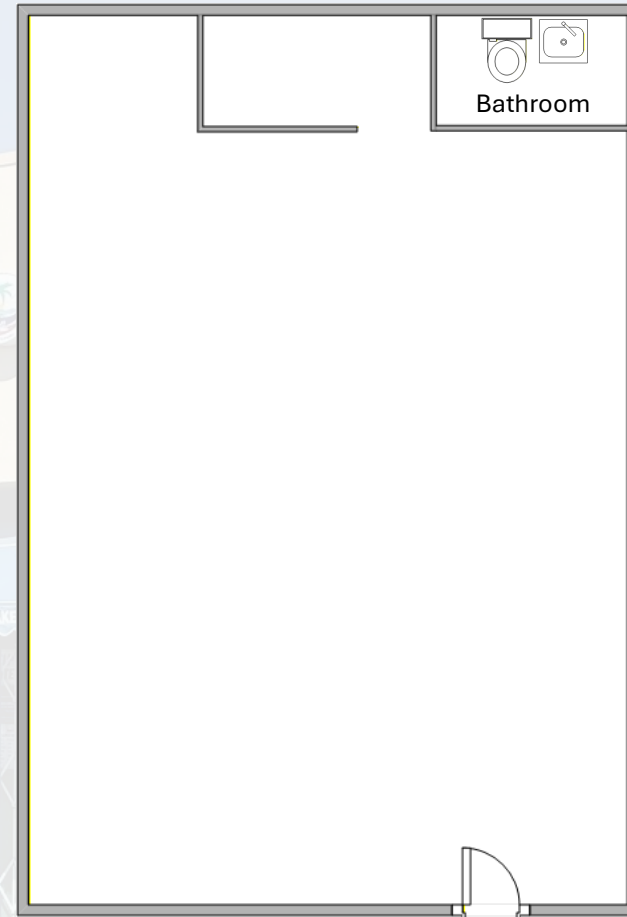
Watermill Express Drives Traffic to Center

Close Proximity to SR 54

Easy Access to I-805 (via E. Plaza Blvd.)

Close to Plaza Bonita Shopping Center, Mile of Cars & Paradise Valley Hospital

15 Minutes From San Ysidro International Port of Entry (World's Busiest Border Crossing)



Floor Plan Not Fit to Scale; for Reference Purposes Only.