

# Office Building **AVAILABLE** FOR LEASE

## 1340 7th Street

Wasco, CA

### Property Highlights

- Stand alone Wasco Office Building
- Substantial parking plus covered parking
- Central Wasco location
- Occupancy ready condition

The information contained herein may have been obtained from sources other than ASU Commercial. We have not verified such information and make no guarantees, warranties or representations about such information. It is your responsibility to independently confirm its accuracy and completeness prior to purchasing/leasing the property.



**Matthew E. Starr, SIOR, CCIM** ▪ Principal ▪ 661 616 3570 ▪ [matthew@asuassociates.com](mailto:matthew@asuassociates.com) ▪ CA RE #01367855  
**Martin J. Starr** ▪ Principal ▪ 661 616 3567 ▪ [mjstarr@asuassociates.com](mailto:mjstarr@asuassociates.com) ▪ CA RE #01179469  
**Jonathon L. Ortiz** ▪ Associate ▪ 661 885 6948 ▪ [jonathon@asuassociates.com](mailto:jonathon@asuassociates.com) ▪ CA RE #02069258

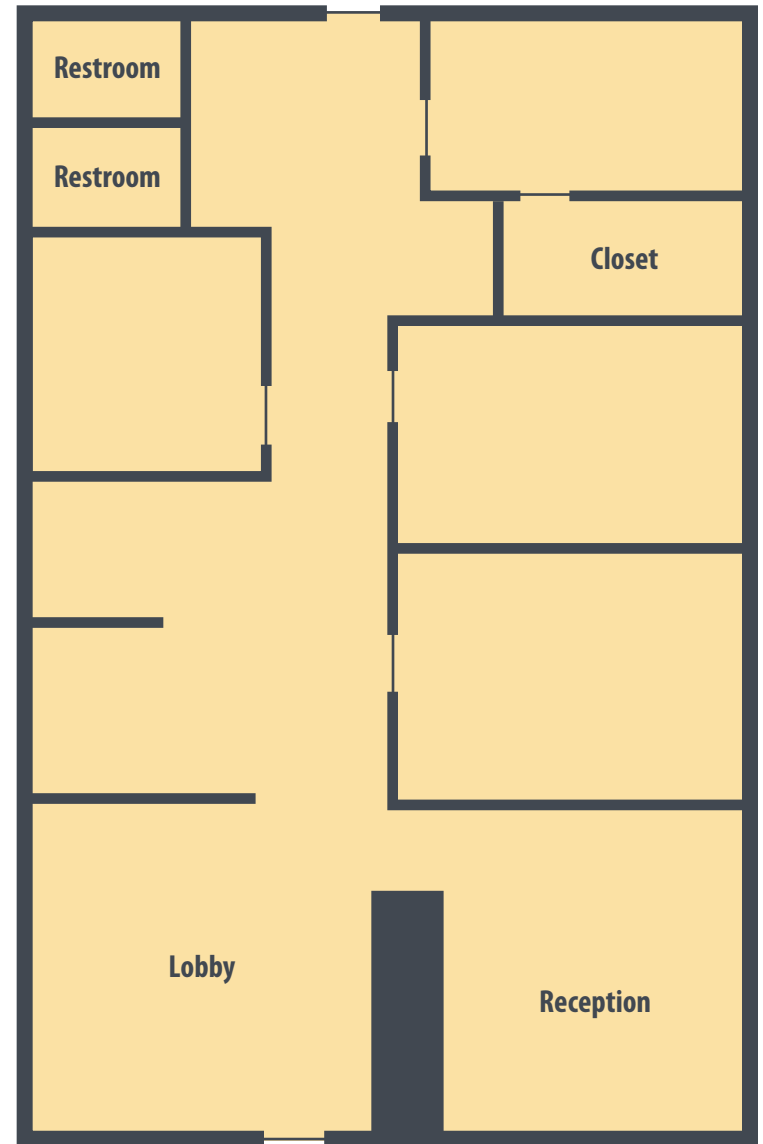
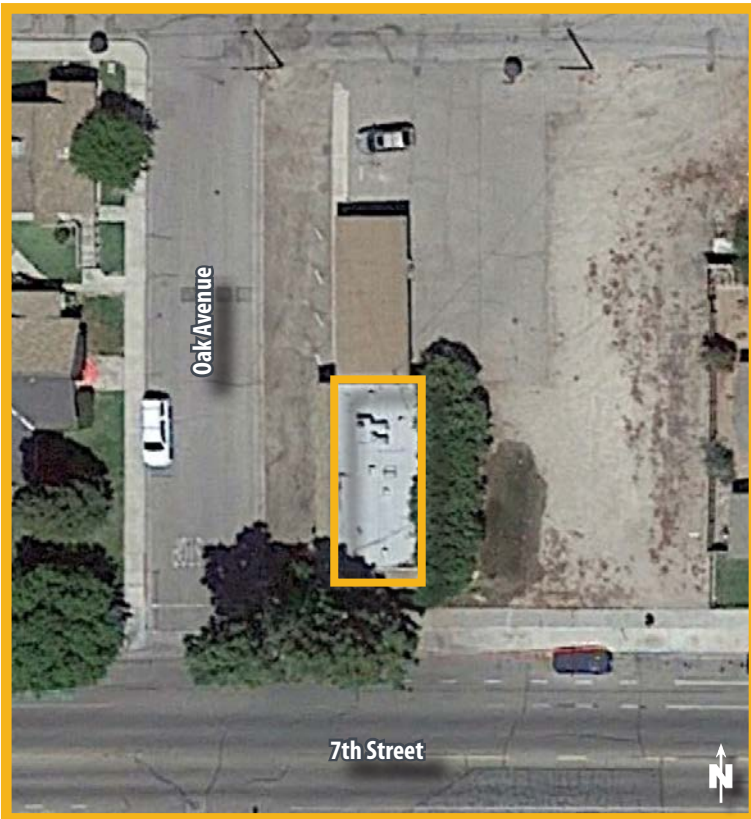
# Office Building Available For Lease

## Offering Terms | Floor Plan

1340 7th Street - Wasco, CA

### Offering Terms

- **Available Space** Approximately 1,250 SF
- **Rental Rate** \$1,600 Per Month Modified Gross
- Available September 1, 2023
- Interior condition is excellent



*\*Plans deemed to be accurate, but not guaranteed. Plan not to scale.*

# Office Building Available For Lease

## Exterior Property Photos

1340 7th Street - Wasco, CA

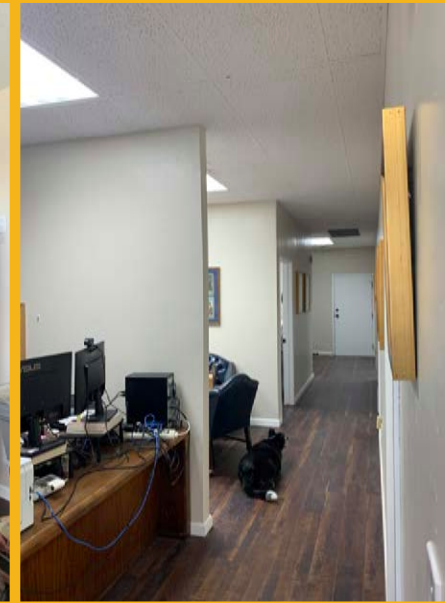


**Matthew E. Starr, SIOR, CCIM** • Principal • 661 616 3570 • [matthew@asuassociates.com](mailto:matthew@asuassociates.com) • CA RE #01367855  
**Martin J. Starr** • Principal • 661 616 3567 • [mjstarr@asuassociates.com](mailto:mjstarr@asuassociates.com) • CA RE #01179469  
**Jonathon L. Ortiz** • Associate • 661 885 6948 • [jonathon@asuassociates.com](mailto:jonathon@asuassociates.com) • CA RE #02069258

# Office Building Available For Lease

## Interior Property Photos

1340 7th Street - Wasco, CA



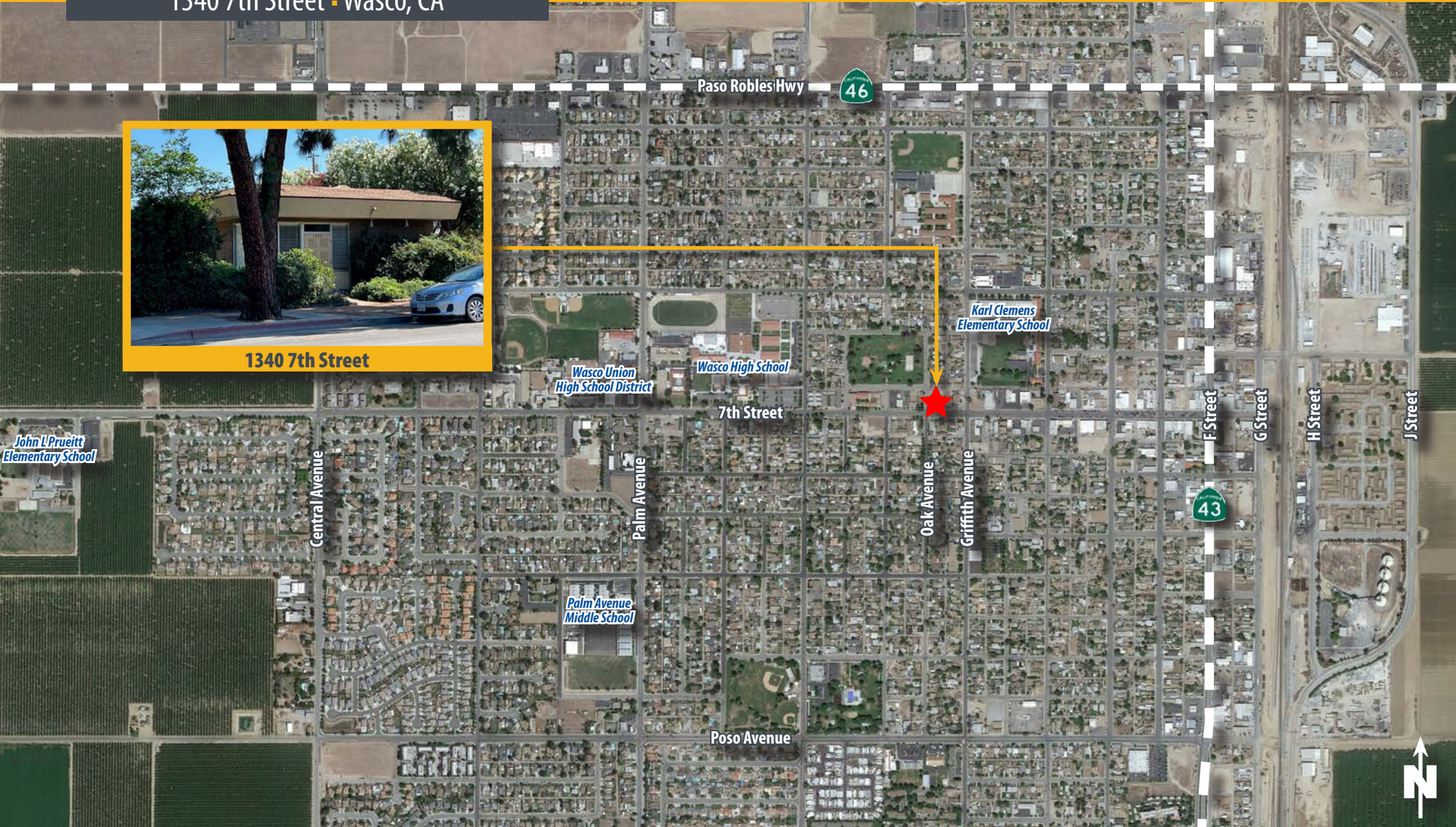
# Office Building Available For Lease

## Location Aerial Map

1340 7th Street - Wasco, CA



1340 7th Street



Matthew E. Starr, SIOR, CCIM • Principal • 661 616 3570 • [matthew@asuassociates.com](mailto:matthew@asuassociates.com) • CA RE #01367855  
Martin J. Starr • Principal • 661 616 3567 • [mjstarr@asuassociates.com](mailto:mjstarr@asuassociates.com) • CA RE #01179469  
Jonathon L. Ortiz • Associate • 661 885 6948 • [jonathon@asuassociates.com](mailto:jonathon@asuassociates.com) • CA RE #02069258