



Sale price

\$2,400,000

3030 Main Street Hartford, CT 06120

**±45,920 sf industrial building on a
±3.47 acre site in Hartford, CT for sale**

3030 Main Street a ±45,920 sf building situated on ±3.5 acres within Hartford's NX-2 zoning district. Equipped with heavy power, the property is well-suited for machine shop operations, woodworking, or similar industrial uses.

Formerly home to Alden Manufacturing, the facility also offers excellent potential as a distribution center, featuring multiple loading docks and drive-in doors. Additional value is provided by three existing tenants on-site, generating rental income without occupying the main building.

Features

- ±45,920 sf industrial building with ±2,600 sf office space
- ±3.47 acre site
- 2 loading docks & 5 drive-in doors (10'x12')
- Wet sprinkler system
- Partially air-conditioned
- 36 front and side parking spaces
- Rail on site
- 250 volts/1,500 amps

Michael Matrone

860 616 4023

michael.matrone@ct.colliers.com

Nicholas Morizio, CRE, SIOR

860 616 4022

nicholas.morizio@ct.colliers.com

864 Wethersfield Avenue

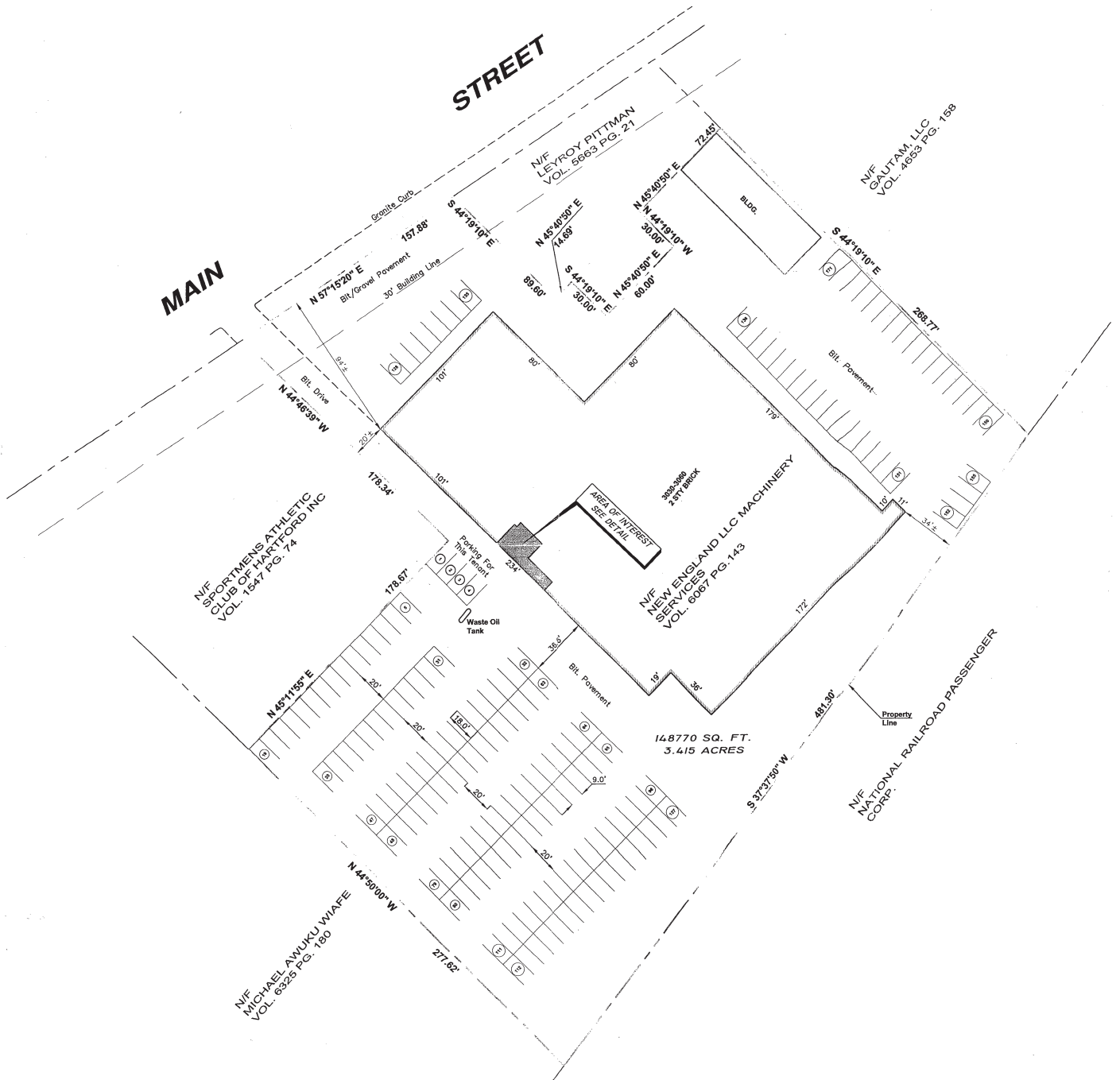
Hartford, CT 06114

860 249 6521 Main

colliers.com/hartford

Copyright © 2026 Colliers International. Information herein has been obtained from sources deemed reliable, however its accuracy cannot be guaranteed. The user is required to conduct their own due diligence and verification.

Site Plan



Michael Matrone
 860 616 4023
 michael.matrone@ct.colliers.com

Nicholas Morizio, CRE, SIOR
 860 616 4022
 nicholas.morizio@ct.colliers.com

864 Wethersfield Avenue
 Hartford, CT 06114
 860 249 6521 Main

colliers.com/hartford



Michael Matrone
860 616 4023
michael.matrone@ct.colliers.com

Nicholas Morizio, CRE, SIOR
860 616 4022
nicholas.morizio@ct.colliers.com

864 Wethersfield Avenue
Hartford, CT 06114
860 249 6521 Main

colliers.com/hartford