

For Lease

CBRE

Office and Medical Suites Available

6640 Van Nuys Blvd Van Nuys, CA 91405



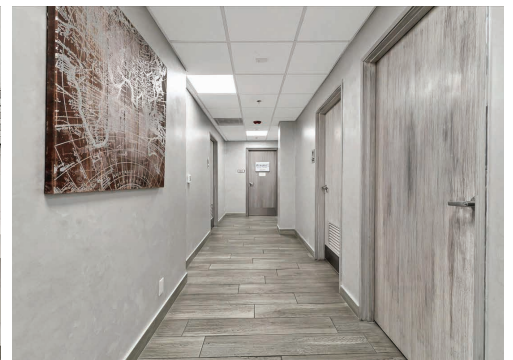
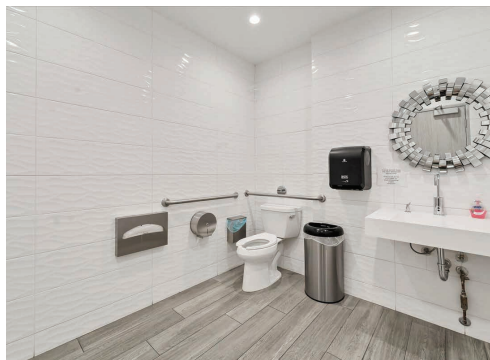
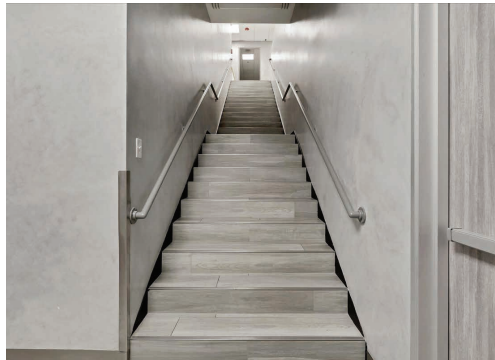
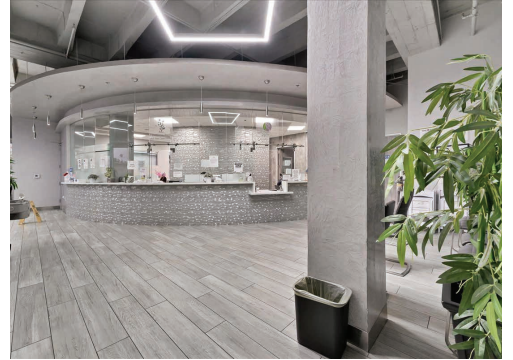
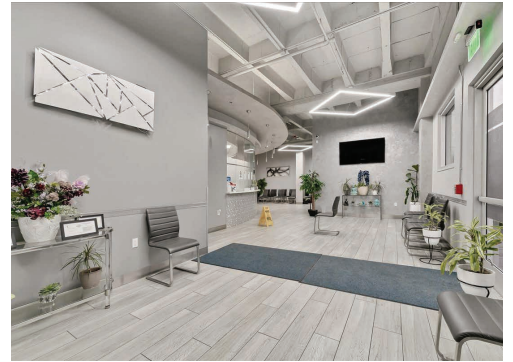
Property Details

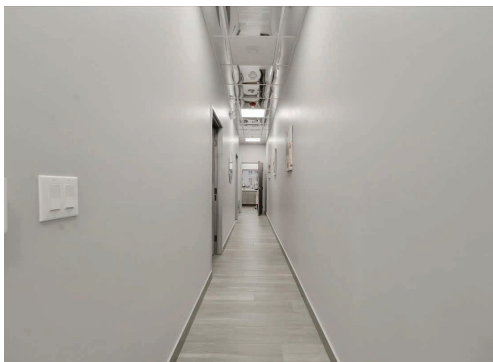
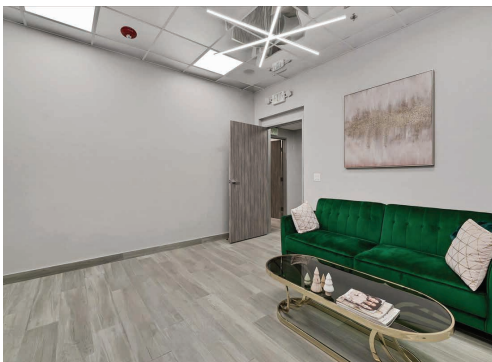
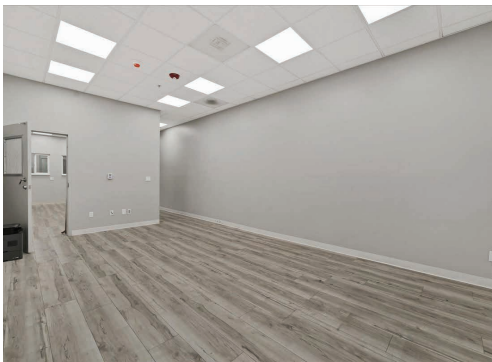
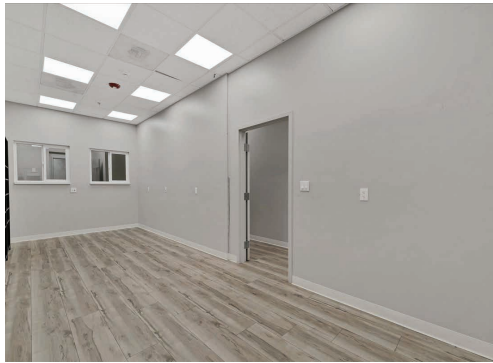
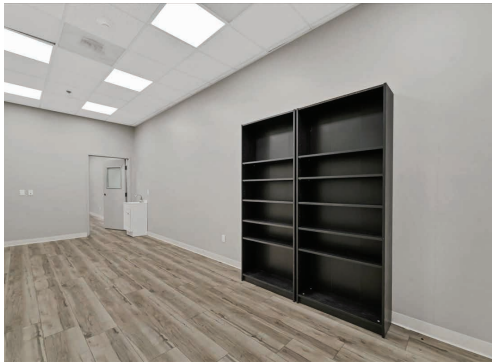
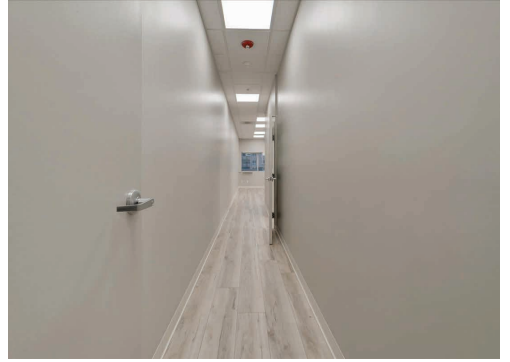
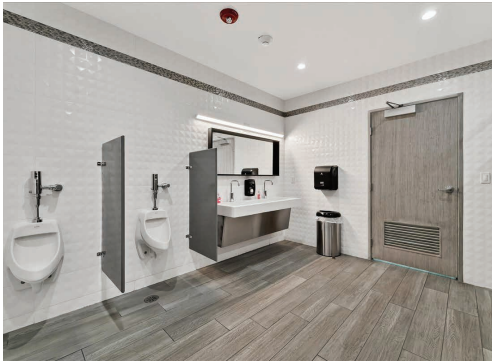
+ Suites ranging from 500-18,000 SF Total

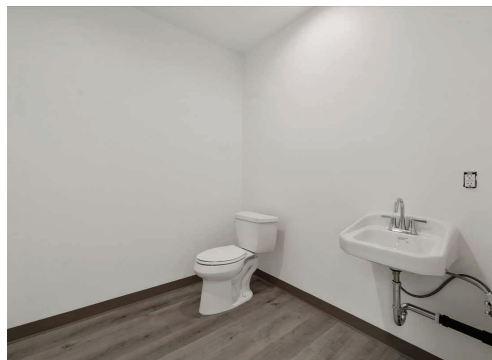
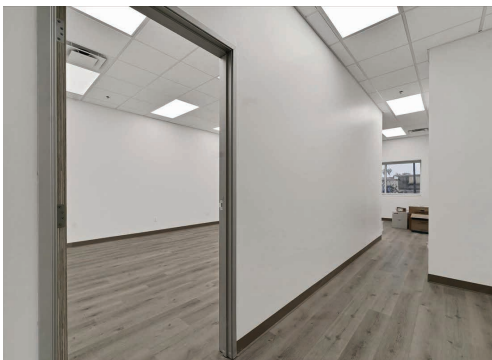
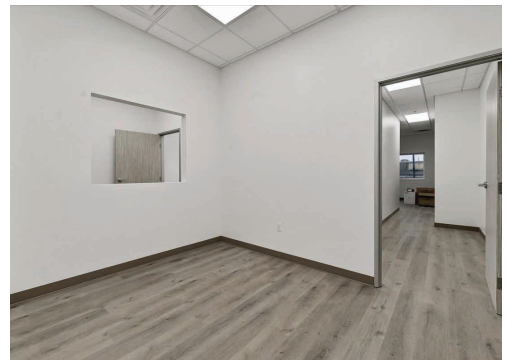
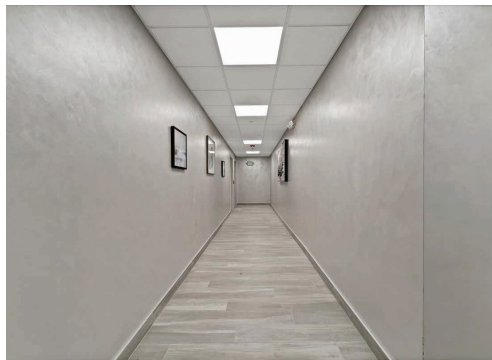
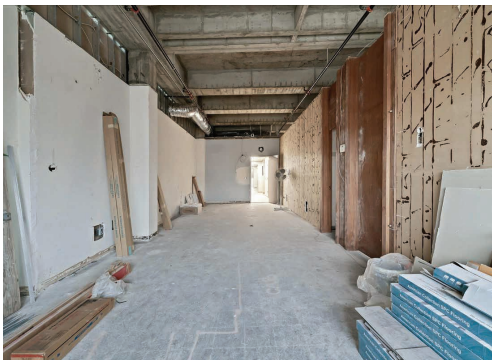
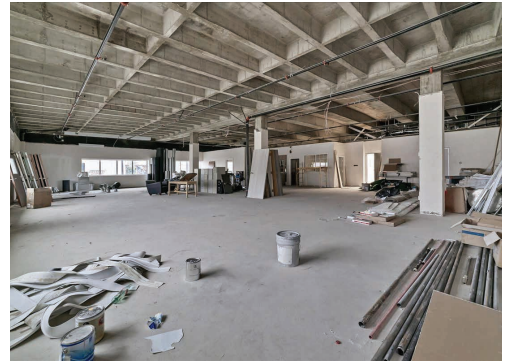
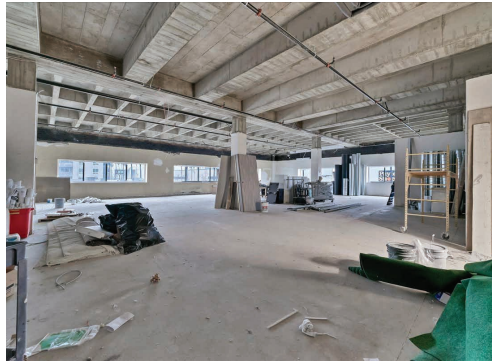
+ Asking rate \$2.25/SF/MG

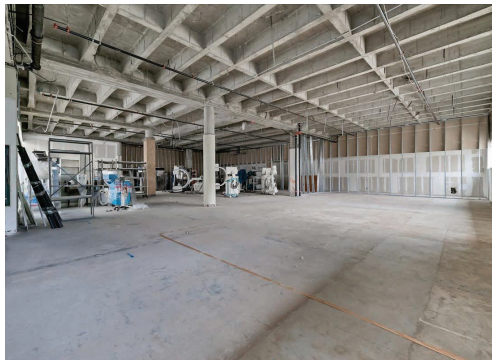
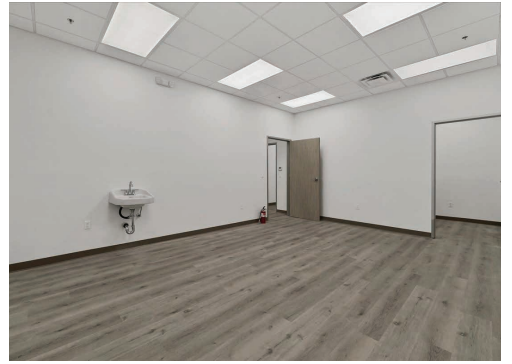
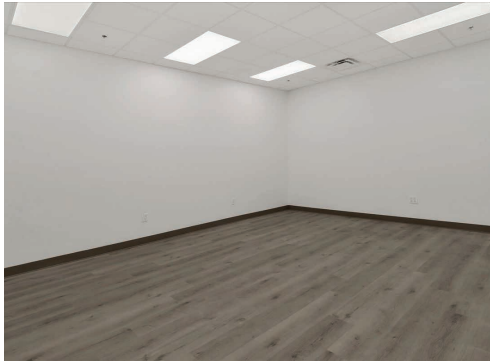
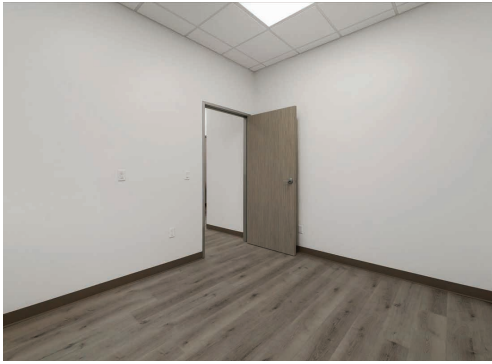
+ 6.0/1,000 Parking (280 spaces)

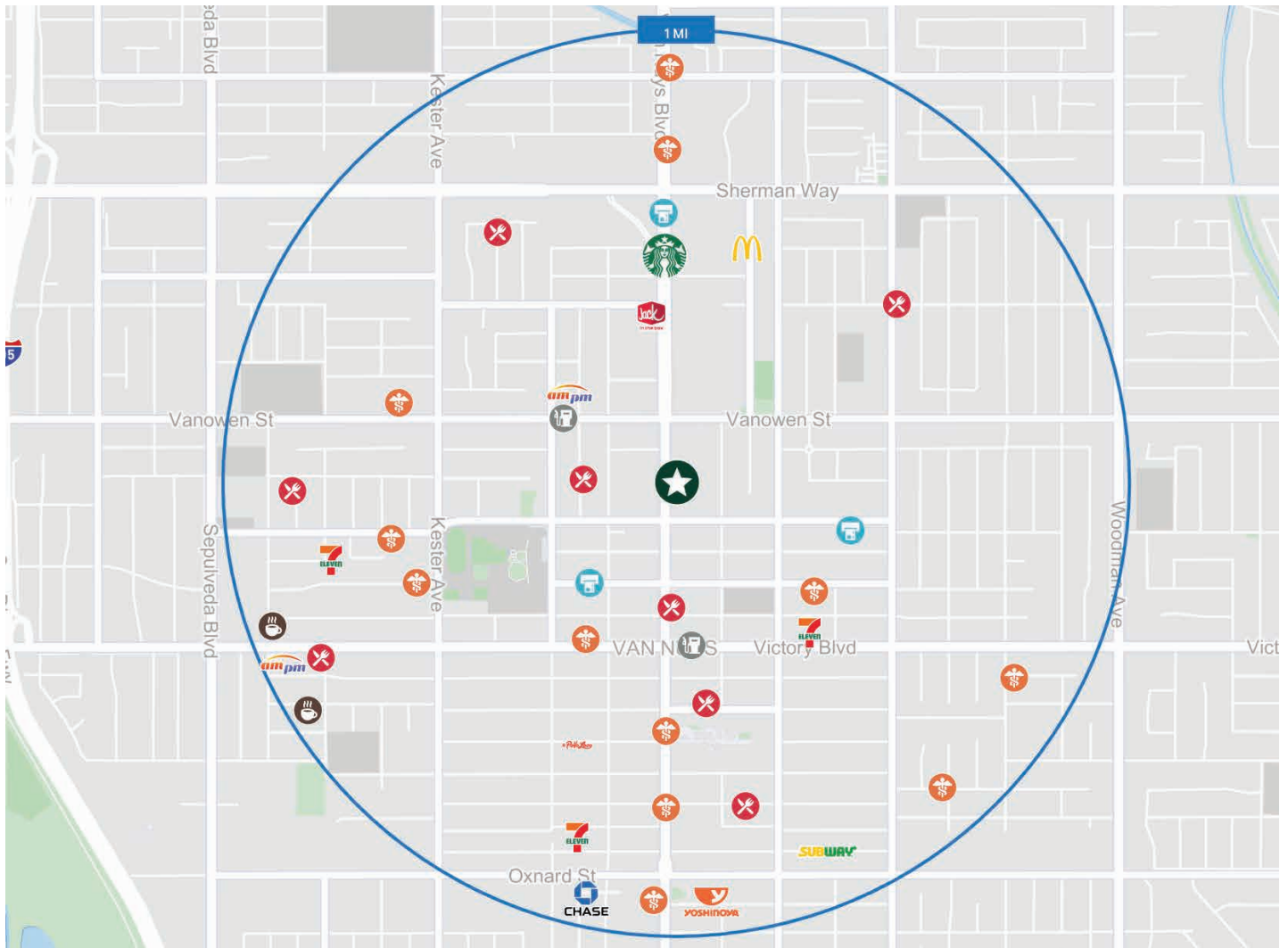












Contact Us

Mark Landver

First Vice President

Lic. 01767071

T: +1 310 550 2588

M: +1 310 720 6669

mark.landver@cbre.com

© 2023 CBRE, Inc. All rights reserved. This information has been obtained from sources believed reliable, but has not been verified for accuracy or completeness. You should conduct a careful, independent investigation of the property and verify all information. Any reliance on this information is solely at your own risk. CBRE and the CBRE logo are service marks of CBRE, Inc. All other marks displayed on this document are the property of their respective owners, and the use of such logos does not imply any affiliation with or endorsement of CBRE. Photos herein are the property of their respective owners. Use of these images without the express written consent of the owner is prohibited.