



3108 PONTE MORINO DR

FOR LEASE

Fully Improved Office/Medical Space with ± 600 SF Up to $\pm 1,724$ SF Available

CAMERON PARK | CALIFORNIA

TOM CONWELL
916.751.3626
tom.conwell@kidder.com
LIC N° 01394155

3108 PONTE MORINO DR

±600 SF UP TO ±1,724 SF AVAILABLE IN CAMERON PARK, CALIFORNIA



Fully improved Office/Medical space

Easy access to Highway 50

Attractive common lobby with above standard finishes

Professional Business/Medical Park environment

Nearby retail amenities

Close proximity to Marshall Medical Center & Ponte Palmero

Retirement community

3108 PONTE MORNIO

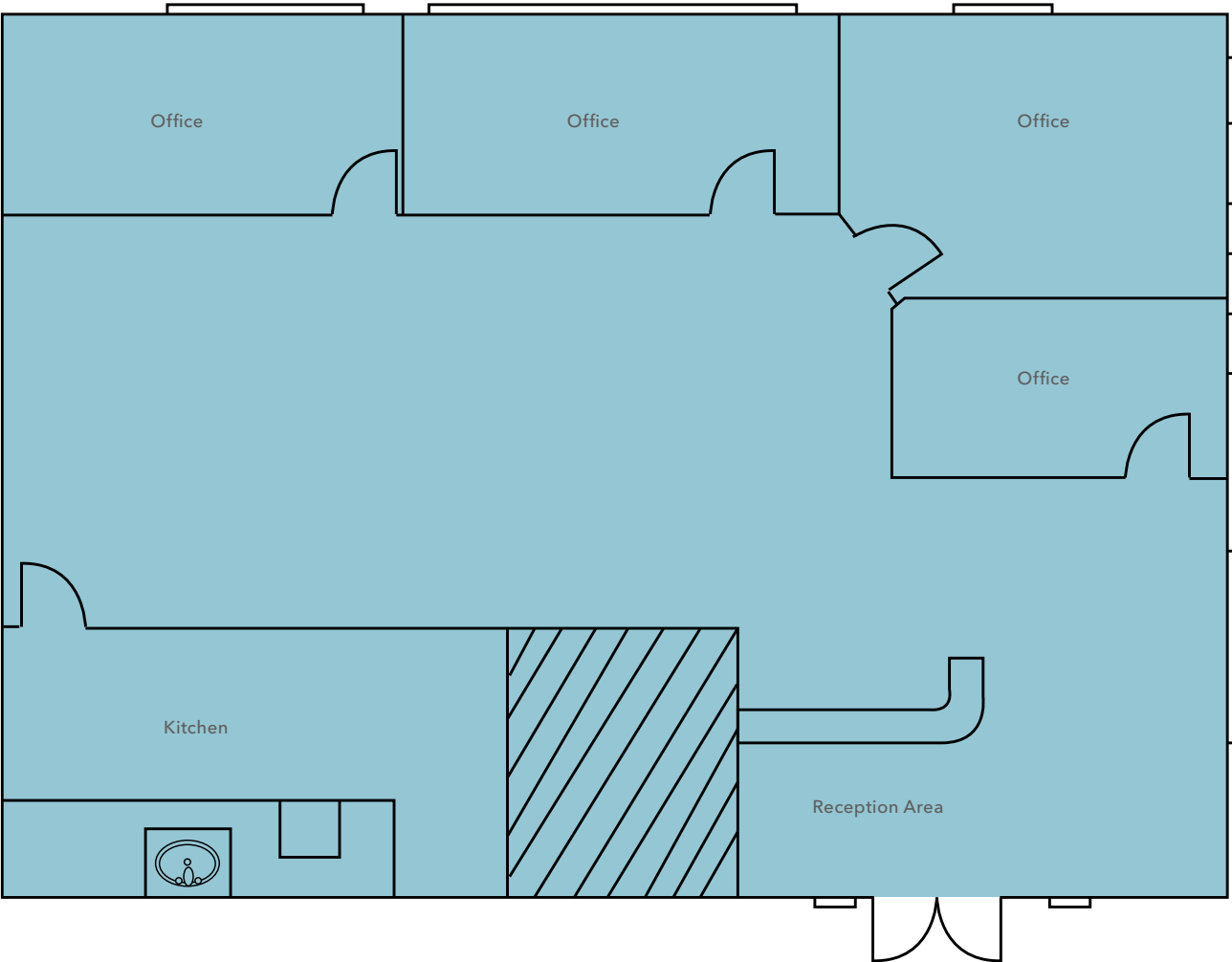
SUITE 140 ±1,724 SF

SUITE 213* ±600 SF

*Elevator serviced to second floor



±1,724 SF SUITE 140 - 3108 PONTE MORINO





3108 PONTE MORINO DRIVE

*For more information on
this property, please contact*

TOM CONWELL
916.751.3626
tom.conwell@kidder.com
LIC N° 01394155

KIDDER.COM

This information supplied herein is from sources we deem reliable. It is provided without any representation, warranty, or guarantee, expressed or implied as to its accuracy. Prospective Buyer or Tenant should conduct an independent investigation and verification of all matters deemed to be material, including, but not limited to, statements of income and expenses. Consult your attorney, accountant, or other professional advisor. All Kidder Mathews designs are the sole property of Kidder Mathews. Branded materials and layouts are not authorized for use by any other firm or person.

