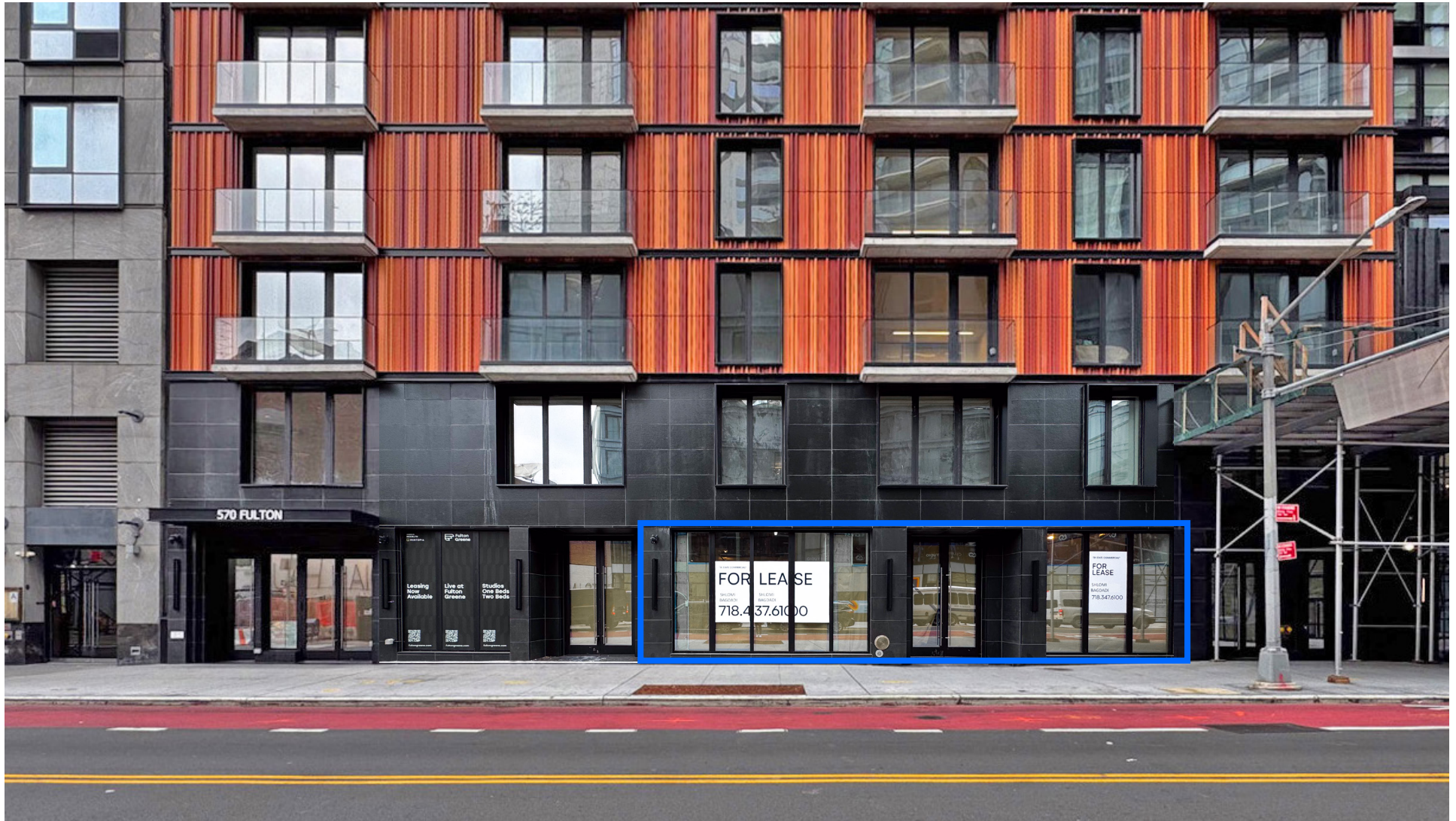


570 FULTON STREET, BROOKLYN, NY 11217

FOR LEASE

1,500 – 4,000 SF NEWLY DEVELOPED RETAIL SPACE IN PRIME DOWNTOWN BROOKLYN

Between Flatbush Avenue & Rockwell Place



SHLOMI BAGDADI
212.433.3355 x101
sb@tristatecr.com

LEO BEDA
212.433.3355 x103
leo.b@tristatecr.com

TRI STATE COMMERCIAL®

PROPERTY SUMMARY

LOCATION

Located in the Downtown Brooklyn neighborhood of Brooklyn.

HIGHLIGHTS

- New Development – Complete as of October 2025
- The 23-Story Building With 163 Rental Units
- Developed by Goose Property Management
- Designed by Fischer Rasmussen Whitefield Architects
- Amenities Include: A gym, yoga and dance studio, recreation room, business center, package lockers, and a rooftop terrace
- Heavy Foot Traffic

SPACE DETAILS

- Divisions Available
- Glass Storefronts
- Space A: 2,500 SF
- Space B: 1,500 SF
- Spaces Can Be Combined for the Right Tenant

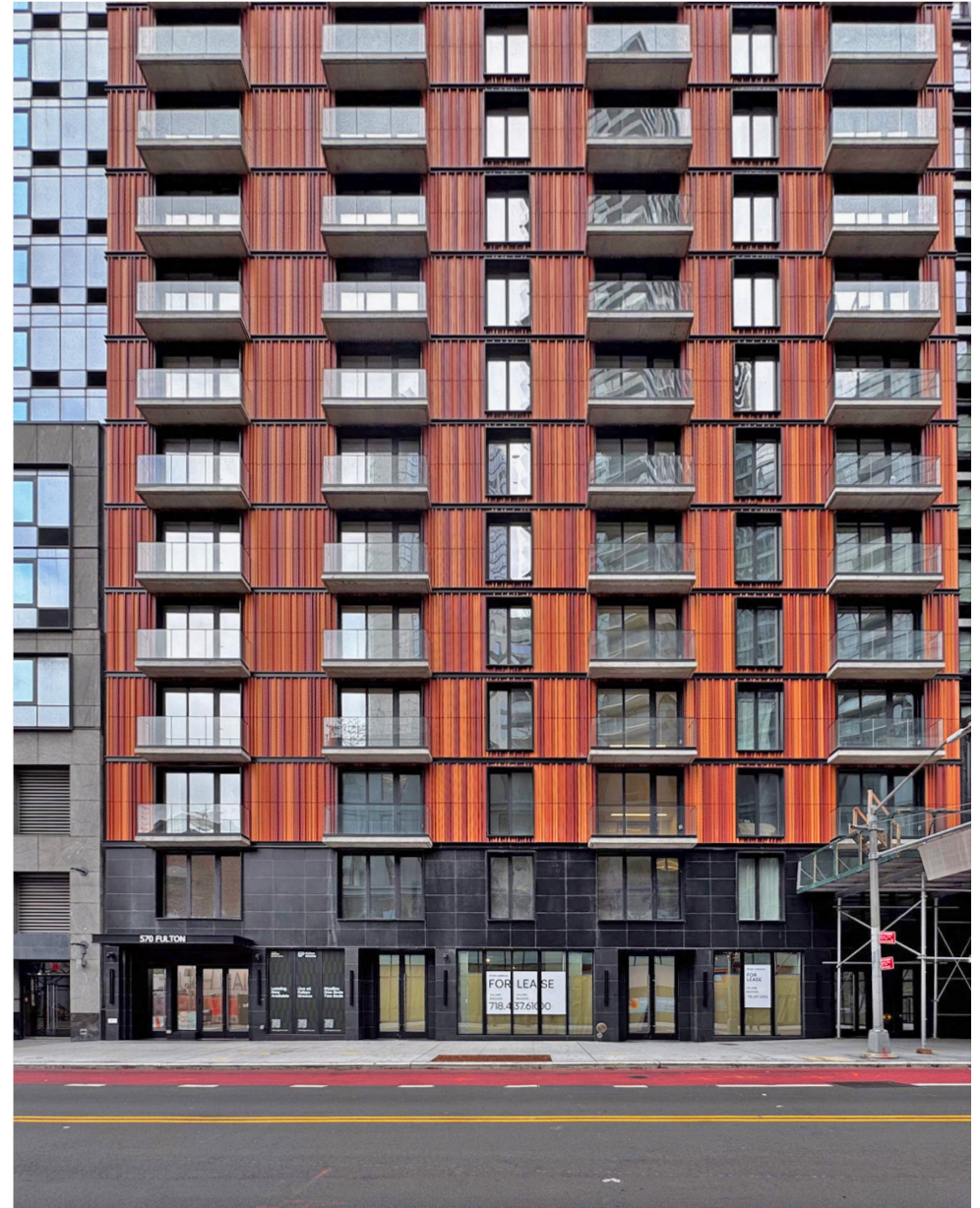
TRANSPORTATION

2 3 4 5 Trains at Nevins Street

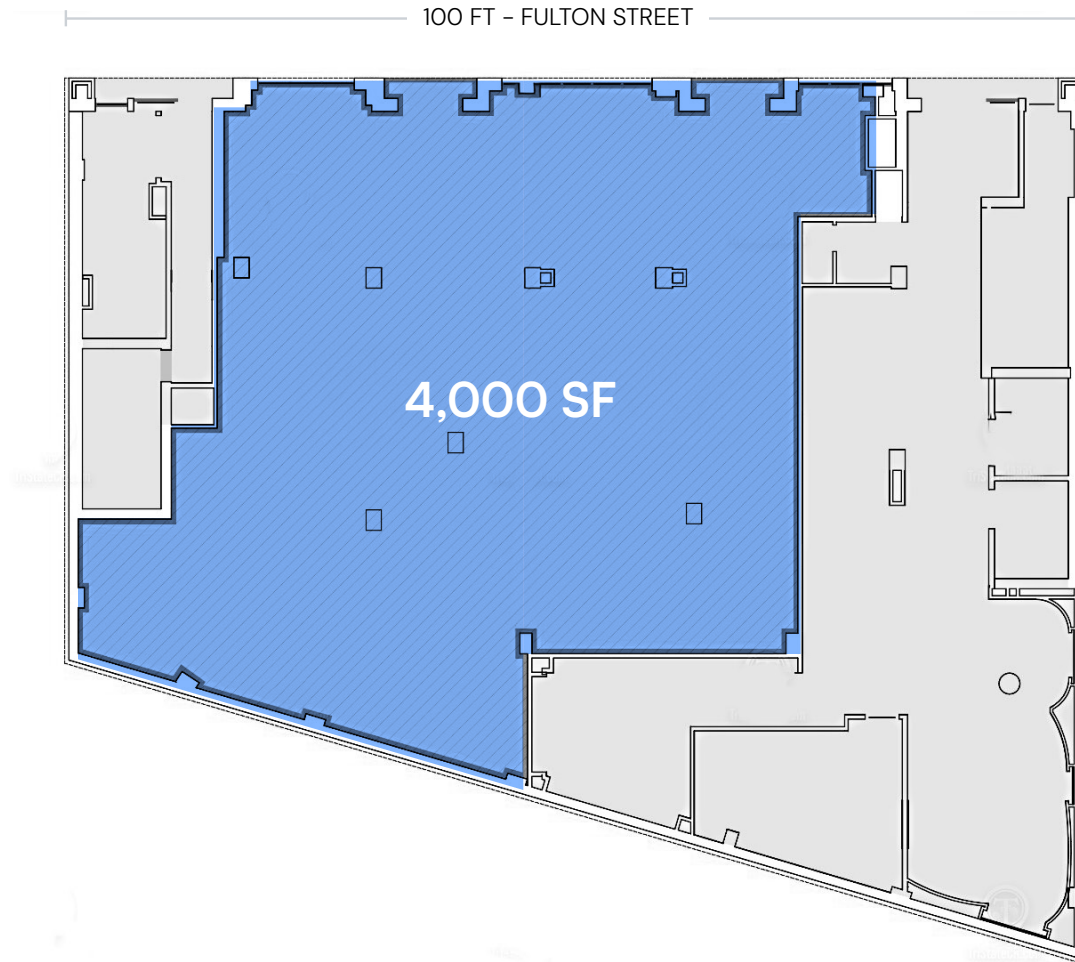
B25 B26 B52 B67 B45 B41 B38 B103 B63 B65 Bus Lines

NEIGHBORS

McDonald's, Starbucks, 7-Eleven, Smashburger, Burger King, Popeyes Louisiana Kitchen, The UPS Store, All Ears Veterinary, Brooklyn Health Center, Endrnce LLC, Stack'd Burger, Burlington, Dollar Tree, Yaya Tea, Bank of America, Tacombi, Theatre for a New Audience at Polonsky Shakespeare Center, and more!



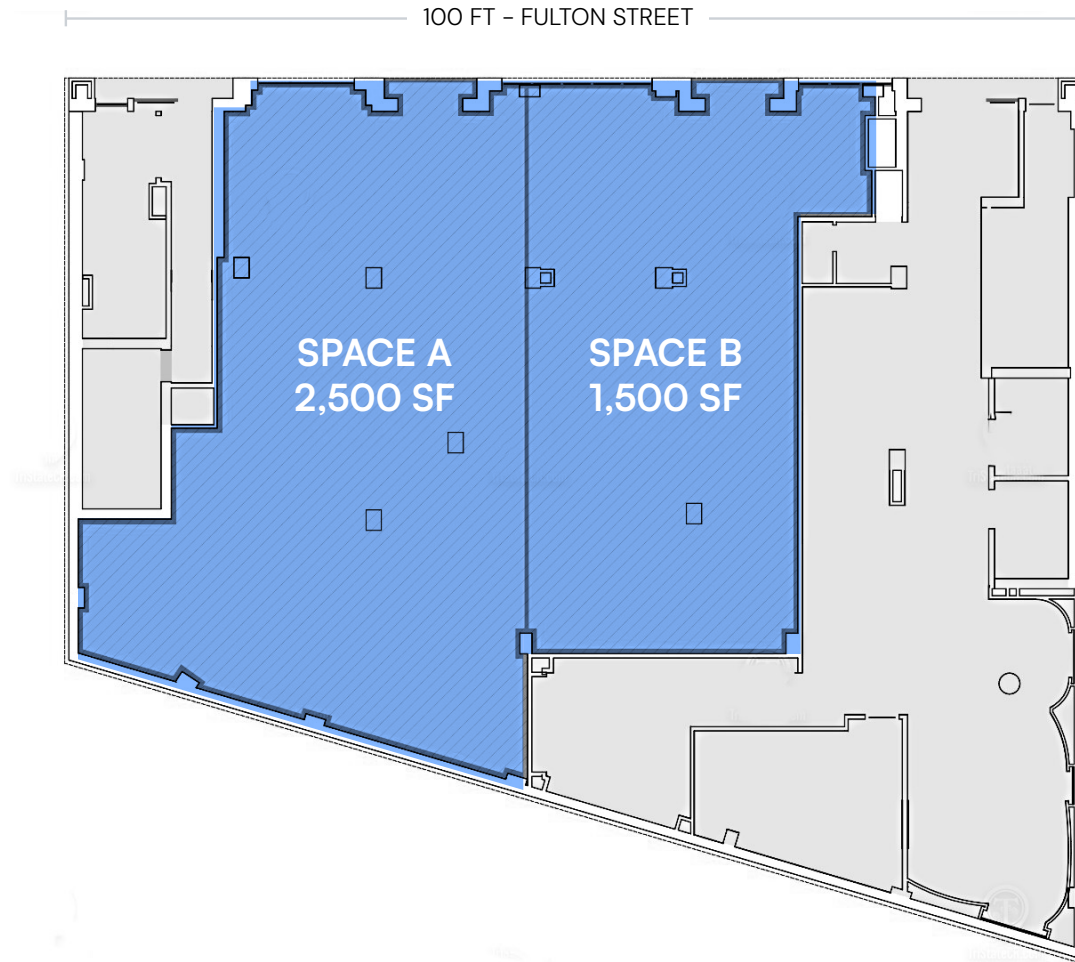
FLOOR PLAN



TOTAL SPACE

All square footages are approximate

FLOOR PLAN



DIVISION OPTION

All square footages are approximate

PROPERTY PHOTOS



PROPERTY RENDERINGS



RETAIL MAP



570 FULTON STREET, BROOKLYN, NY 11217

1,500 – 4,000 SF NEWLY DEVELOPED RETAIL SPACE IN PRIME DOWNTOWN BROOKLYN

Between Flatbush Avenue & Rockwell Place

For Pricing Call: **212.433.3355**

SHLOMI BAGDADI
212.433.3355 x101
sb@tristatecr.com

LEO BEDA
212.433.3355 x103
leo.b@tristatecr.com

TSC.