

# FOR LEASE

Up to 12,900 SF

"Can Subdivide"

3020 Hamaker Court

## FAIRFAX

Near Inova Fairfax Hospital & Mosaic District

### Prosperity Plaza



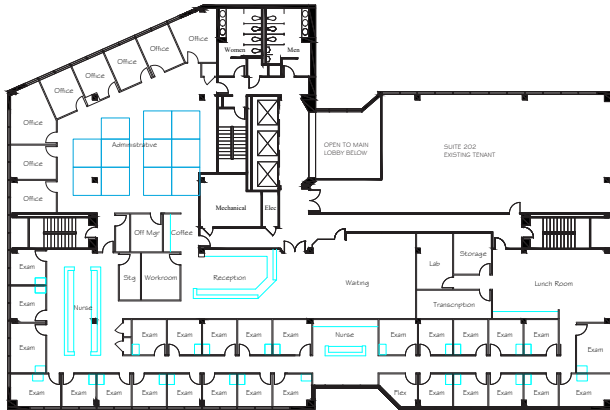
 **GatesHudson**

**REAL PARTNERS  
IN REAL ESTATE**

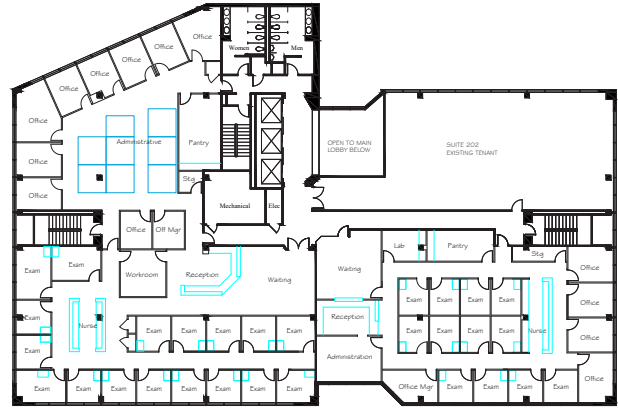
3020 Hamaker Court Suite 301 Fairfax VA 22031 | 703-876-9590 | gateshudson.com

est 1980

## 3020 Hamaker Court **FAIRFAX** Near Inova Fairfax Hospital & Mosaic District



**SINGLE TENANT USE (12,900 SF)**



**MULTI-TENANT USE (8,161 & 4,782 SF)**  
*(can be further subdivided)*

## DETAILS

- Up to 12,900 SF available for medical or office use (can be subdivided).
- Easy access to I-495, I-66, Route 50, Lee Highway, and Little River Turnpike.
- Close to the Dunn Loring Metro Station (Orange & Silver Lines).
- 0.4 mi. from amenity-rich Mosaic District and 0.9 mi. from Inova Fairfax Hospital.
- Building amenities include on-site cafe and surface or garage parking.
- Landlord will provide turnkey buildout.

## LEASING

**Alice Kumar** | [akumar@gateshudson.com](mailto:akumar@gateshudson.com) | 703-876-9590 x 273

**Joe Schechtel** | [jschechtel@gateshudson.com](mailto:jschechtel@gateshudson.com) | 703-876-9590 x 267



**REAL PARTNERS  
IN REAL ESTATE**