



FOR SUBLEASE

1575

N GOWER ST

COLUMBIA SQUARE



**CUSHMAN &
WAKEFIELD**

SPACE HIGHLIGHTS

Floor

3rd Floor - Suite 350

Size

5,875 RSF

Rate

Negotiable

Features

- Includes high-end acoustically attenuated studio room
- Modern feel with polished concrete flooring and exposed ceilings
- High profile premier creative office building in Hollywood
- Brand new high-end buildout

Term

Through Feb. 28, 2027

Available

Immediately

Parking

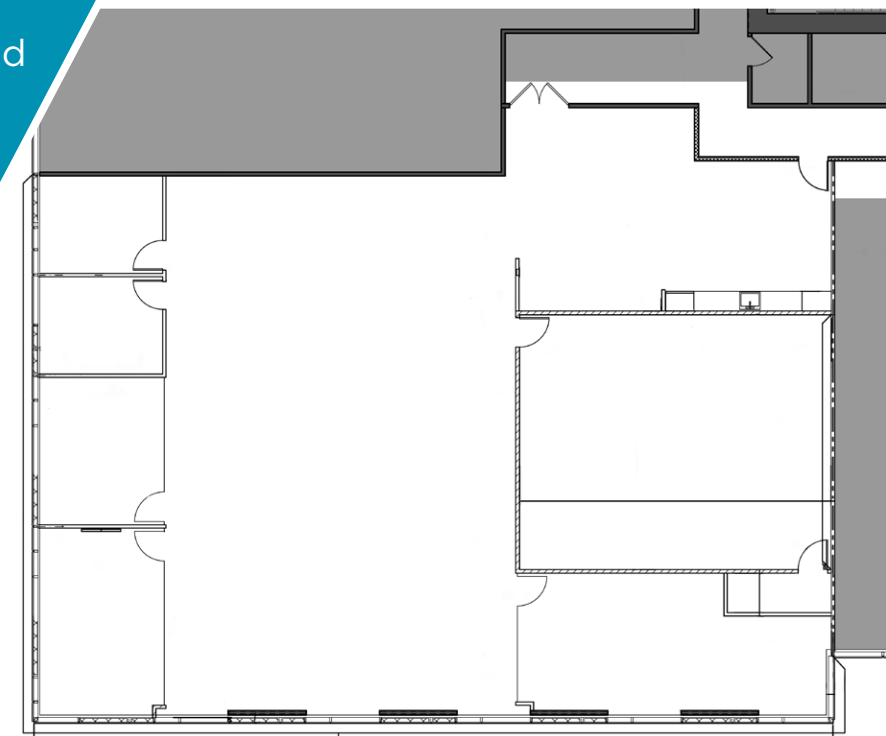
12 spaces
\$186 per unreserved



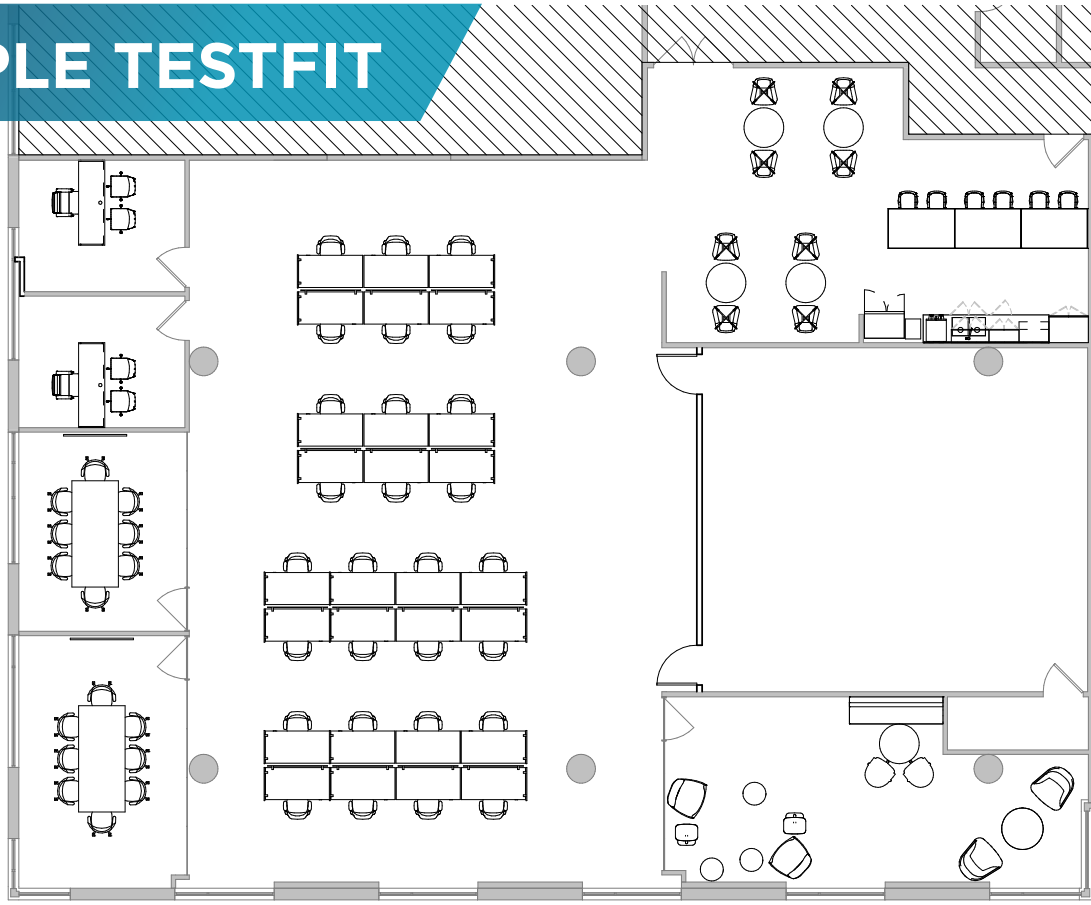
RICH HISTORY

- neighbors with innovative companies from around the world
- Class A workspace
- collaborative indoor/outdoor environments
- walkable shopping
- classic urban living
- surrounded by a media village

FLOORPLAN



SAMPLE TESTFIT



VIEW WALK-THROUGH



SAMPLE RENDERINGS



AT THE CENTER OF THE ENTERTAINMENT CAPITAL OF THE WORLD



95

WALKER'S PARADISE WALK SCORE®

72

EXCELLENT TRANSIT

74

Dining & Restaurants

6

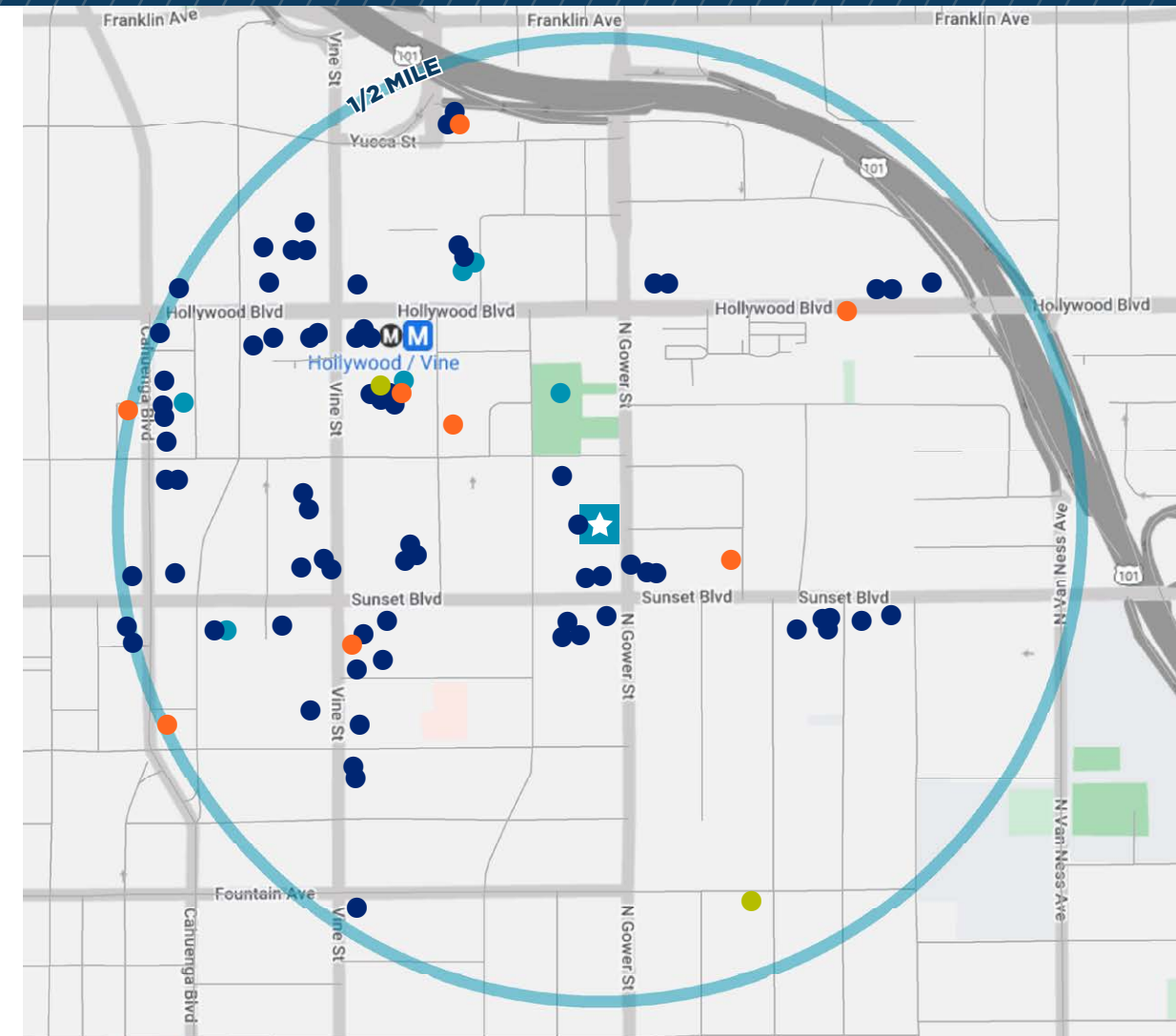
Fitness & Recreational Centers

2

Grocers & Markets

8

Hotels & Accommodations



1575

N GOWER ST
COLUMBIA SQUARE

FOR MORE INFORMATION, PLEASE CONTACT

DAN GALLUP
Managing Director
+1 310 795 5836
dan.gallup@cushwake.com
Lic #01446968

DAVORIN KRISTO
Vice President
+1 314 650 9667
dkristo@cresa.com
LIC #02065933

©2023 Cushman & Wakefield. All rights reserved. The material in this presentation has been prepared solely for information purposes, and is strictly confidential. Any disclosure, use, copying or circulation of this presentation (or the information contained within it) is strictly prohibited, unless you have obtained Cushman & Wakefield's prior written consent. The views expressed in this presentation are the views of the author and do not necessarily reflect the views of Cushman & Wakefield. Neither this presentation nor any part of it shall form the basis of, or be relied upon in connection with any offer, or act as an inducement to enter into any contract or commitment whatsoever. NO REPRESENTATION OR WARRANTY IS GIVEN, EXPRESS OR IMPLIED, AS TO THE ACCURACY OF THE INFORMATION CONTAINED WITHIN THIS PRESENTATION, AND CUSHMAN & WAKEFIELD IS UNDER NO OBLIGATION TO SUBSEQUENTLY CORRECT IT IN THE EVENT OF ERRORS.