



FOR LEASE

Cascade Crest

263 Rainier Ave S Renton, WA 98057



Rob Gasca

Cell: 425-766-3054
robgasca@mapleleafmgmt.com

Alex Ardiente

Cell: 425 273 3386
alex@mapleleafmgmt.com

Rob Gasca Real Estate Group
www.robgasca.com

DISCLAIMER: The information on the following pages has been secured from sources believed to be reliable, however, no representations are made to its accuracy. Prospective tenants or buyers should consult their professional advisors and conduct their own independent investigation. Properties are subject to change in price and/or availability without notice.

263 Rainier Ave S Renton, WA 98057

Rob Gasca

Cell: 425-766-3054
robgasca@mapleleafmgt.com

Alex Ardiente

Cell: 425 273 3386
alex@mapleleafmgt.com



DEMOGRAPHICS 2023	MILE 2	MILE 5	MILE 10
Population	42,762	254,871	910,053
Average HH Income	\$93,503	\$115,309	\$125,856

FOR LEASE

263 Rainier Ave S Renton, WA 98057

Rob Gasca

Cell: 425-766-3054
robgasca@mapleleafmgt.com

Alex Ardiente

Cell: 425 273 3386
alex@mapleleafmgt.com



Versatile medical/office flex space in the heart of downtown Renton. Building consists of two different units with newly renovated common area restrooms, elevator, entirely ADA compliant, and large bay windows possessing great natural light and impressive views throughout the building. Unit 200 has an estimated floor size of 8,122 square feet with fully built out exam rooms, conference rooms, private offices, and reception area. Unit 201 is in grey shell condition with fully open floorplan with estimated 3,469 square feet. Accessible to Rainier Ave, I-405, I-5 and SR 167.



Rob Gasca Real Estate Group
8809 Roosevelt Way NE, Seattle, WA 98115
(206) 250-7367

www.robgasca.com

FOR LEASE

263 Rainier Ave South Renton, WA 98057

Rob Gasca

Cell: 425-766-3054
robgasca@mapleleafmgt.com

Alex Ardiente

Cell: 425 273 3386
alex@mapleleafmgt.com



Unit 200



Rob Gasca Real Estate Group
8809 Roosevelt Way NE, Seattle, WA 98115
(206) 250-7367

www.robgasca.com

FOR LEASE

263 Rainier Ave South Renton, WA 98057

Rob Gasca

Cell: 425-766-3054
robgasca@mapleleafmgt.com

Alex Ardiente

Cell: 425 273 3386
alex@mapleleafmgt.com



Unit 200



Rob Gasca Real Estate Group
8809 Roosevelt Way NE, Seattle, WA 98115
(206) 250-7367

www.robgasca.com

FOR LEASE

263 Rainier Ave South Renton, WA 98057

Rob Gasca

Cell: 425-766-3054
robgasca@mapleleafmgt.com

Alex Ardiente

Cell: 425 273 3386
alex@mapleleafmgt.com



Unit 200



Rob Gasca Real Estate Group
8809 Roosevelt Way NE, Seattle, WA 98115
(206) 250-7367

www.robgasca.com

FOR LEASE

263 Rainier Ave South Renton, WA 98057

Rob Gasca

Cell: 425-766-3054
robgasca@mapleleafmgt.com

Alex Ardiente

Cell: 425 273 3386
alex@mapleleafmgt.com



Unit 201



Rob Gasca Real Estate Group
8809 Roosevelt Way NE, Seattle, WA 98115
(206) 250-7367

www.robgasca.com

FOR LEASE

263 Rainier Ave South Renton, WA 98057

Rob Gasca

Cell: 425-766-3054
robgasca@mapleleafmgt.com

Alex Ardiente

Cell: 425 273 3386
alex@mapleleafmgt.com



Premises



Rob Gasca Real Estate Group
8809 Roosevelt Way NE, Seattle, WA 98115
(206) 250-7367

www.robgasca.com

FOR LEASE

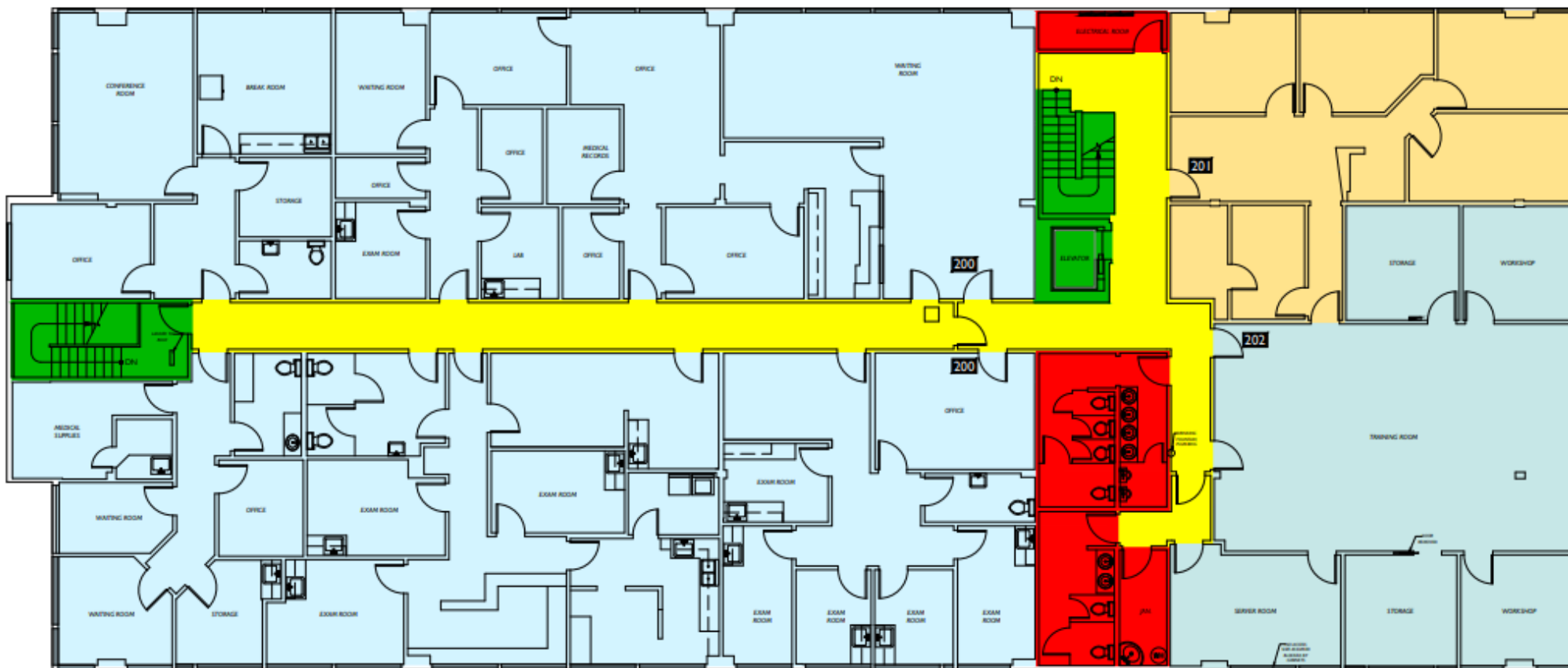
263 Rainier Ave South Renton, WA 98057

Rob Gasca

Cell: 425-766-3054
robgasca@mapleleafmgt.com

Alex Ardiente

Cell: 425 273 3386
alex@mapleleafmgt.com



Floorplan



Rob Gasca Real Estate Group
8809 Roosevelt Way NE, Seattle, WA 98115
(206) 250-7367

www.robgasca.com

FOR LEASE

263 Rainier Ave South Renton, WA 98057

Rob Gasca

Cell: 425-766-3054
robgasca@mapleleafmgt.com

Alex Ardiente

Cell: 425 273 3386
alex@mapleleafmgt.com



Suite	SF	\$/SF	Estimated NNN
200	8,122	\$18	\$8.80
201	3,469	\$18	\$8.80



Rob Gasca Real Estate Group
8809 Roosevelt Way NE, Seattle, WA 98115
(206) 250-7367

www.robgasca.com