



LAYTON END CAP RETAIL FOR LEASE

78 South Fairfield Road, Layton, Utah 84041



PROPERTY INFORMATION

- Storefront Retail Available March 1, 2025
- Unit 105: 6,750 SF End Cap Retail
- Building Signage Available
- Ample Parking
- Nearby Tenants Include: Smiths, C-A-L Ranch, Baskin Robbins, McDonalds and Chevron
- New LDS Temple Two Blocks Away
- Easy Access to I-15

DEMOGRAPHICS

	1 Mile	3 Mile	5 Mile
Population	15,067	86,269	156,853
Households	4,919	26,697	47,688
Avg. Household Income	\$85,151	\$99,492	\$99,918

TRAFFIC COUNTS

Gentile Street: 16,190 Annual Average Daily Traffic

Fairfield Road: 15,178 Annual Average Daily Traffic

LEASE RATE: \$14.00/SF NNN

CONTACT

801.617.1700

CRYSTAL JOHNSON

CRYSTAL.JOHNSON@CRCNATIONWIDE.COM

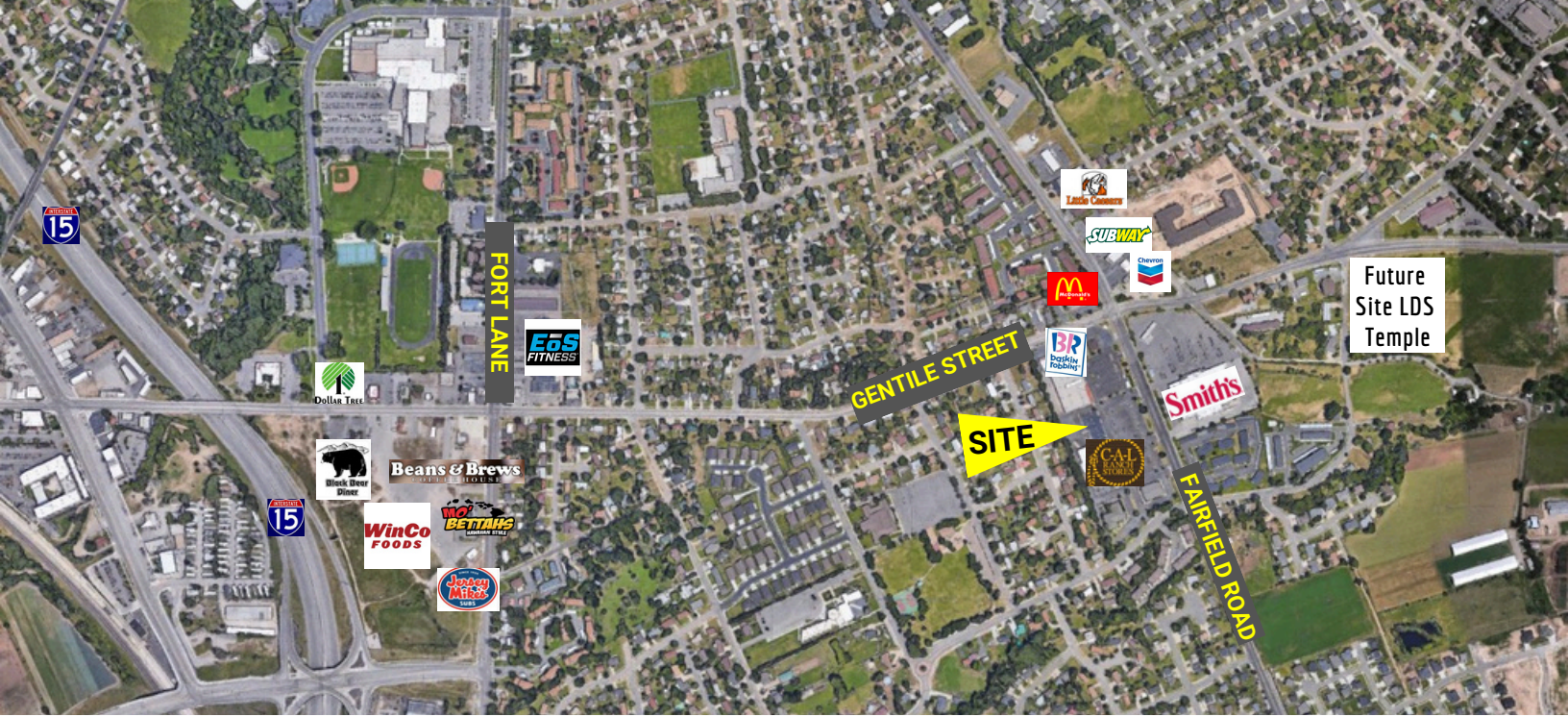
WEST HARADIN

WEST.HARADIN@CRCNATIONWIDE.COM



LAYTON END CAP RETAIL FOR LEASE

78 South Fairfield Road, Layton, Utah 84041



This information is given with the understanding that all negotiations and/or real estate activity related to the property described above shall be conducted through this cRC Nationwide office. The information while not guaranteed, was obtained from sources we believe to be reliable.

CONTACT
801.617.1700

CRYSTAL JOHNSON
CRYSTAL.JOHNSON@CRCNATIONWIDE.COM

WEST HARADIN
WEST.HARADIN@CRCNATIONWIDE.COM