

THE WOODLANDS



GEFFERT WRIGHT DR

HANNA RD

For sale

±3.18 AC

26403 Hanna Rd | Conroe, TX 77385

 **JLL** SEE A BRIGHTER WAY

Site Details

Location

At the corner of Geffert Wright Drive & Hanna Rd in the Woodlands

Site Details

- ±3.18 Acres for sale
- On-Site Detention Required
- Utilities to Site
- Montgomery County
- Outside of floodplain

About the Area

Easy access to The Woodlands and CityPlace master-planned communities, home to: ExxonMobil, HP Inc, HPe, ABS, Southwestern Energy and more. Surrounded by new development, growing high end residential communities and Class-A office and multifamily properties.

Price

Contact brokers for pricing

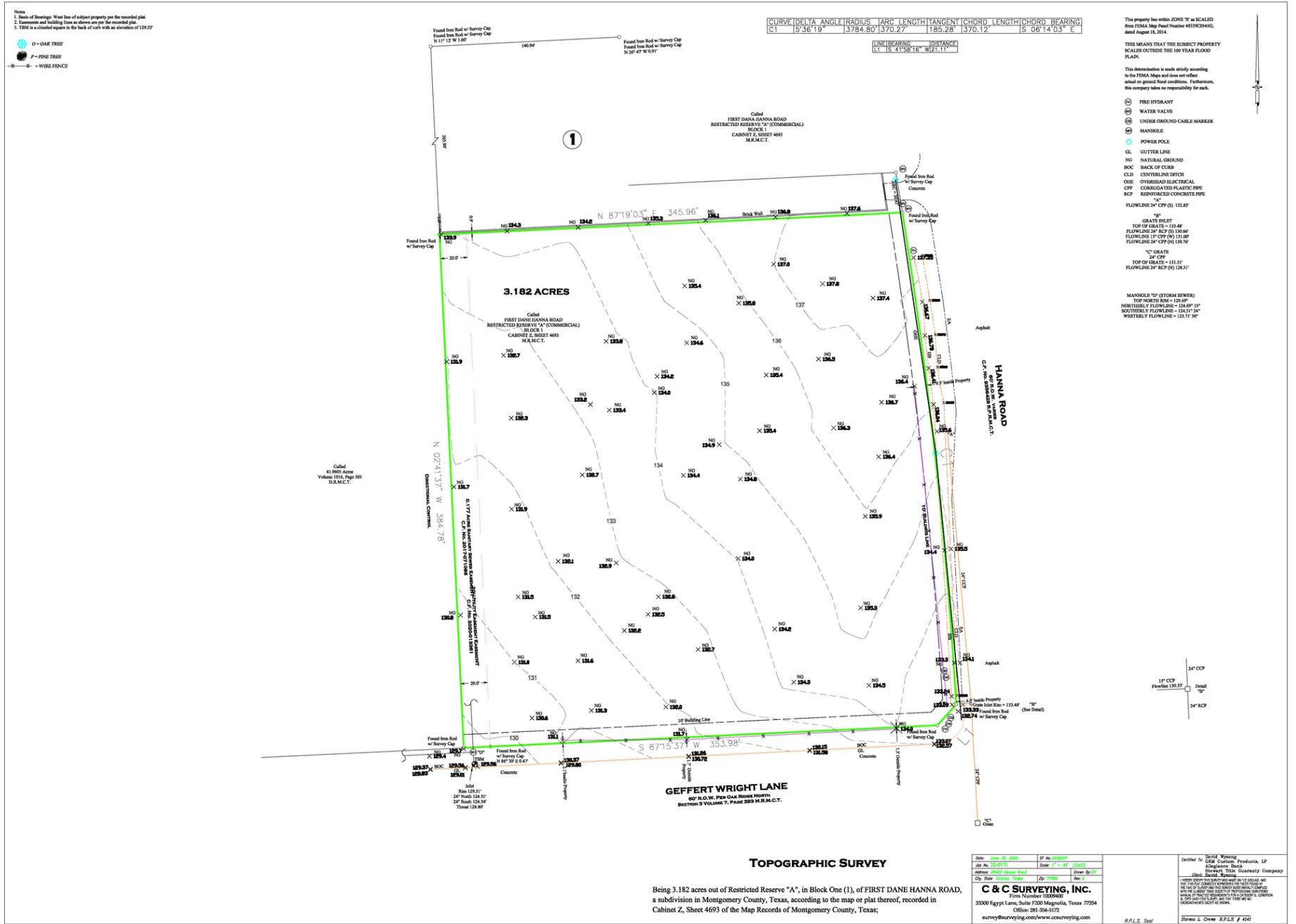


	1 mile	3 miles	5 miles
2024 Total Population	3,011	68,089	213,120
2024 Median Age	39.9	37.4	37.3
Average HH Income	\$137,496	\$117,803	\$116,307
Average Home Value	\$329,408	\$309,841	\$319,495

Property Dimensions



Site Survey



JLL**Ben Sample**

Senior Associate

Ben.Sample@jll.com

+1 713 385 2737

David Holland

Vice President

David.Holland@jll.com

+1 713 888 4095