

# 14890 33 Mile Road

*Romeo, MI*

## Units A-C

- 3,000 - 12,000 Sq. Ft. Available
- Main Road Frontage
- Newly Constructed Multi-Tenant Building
- Located just off the M-53 Exchange & 33 Mile Road
- Clear Span Facility
- Ample Parking

## INDUSTRIAL BUILDING FOR LEASE



3,000 - 12,000 SF of Factory



Office-to-Suite



(4) 12'x14' Grade Level Doors



## FOR MORE INFORMATION:

Joe DePonio III, SIOR  
Senior Vice President  
248.637.3513  
jdeponio@LMCap.com



**L. MASON CAPITANI**  
CORFAC INTERNATIONAL

248.637.9700 | [LMCap.com](http://LMCap.com)

Information contained herein was obtained from sources deemed to be reliable but is not guaranteed. Subjects to prior sales, changes of price or withdrawal.

# 14890 33 Mile Road | Units A-C

Romeo, MI



## Industrial Property Details:

### Details:

<b>Total SF:</b>	12,000 SF
<b>Available SF:</b>	12,000 SF
<b>Office SF:</b>	To Suit
<b>Factory SF:</b>	3,000-12,000 SF
<b>Zoning:</b>	Industrial
<b>Expandable:</b>	Yes
<b>Intersection:</b>	33 Mile & Powell
<b>X-Way Distance:</b>	1 Mile to M-53
<b>Parking:</b>	Ample
<b>Year Built:</b>	2025
<b>Occupancy:</b>	30 Days

### Interior:

<b>Ceiling Height:</b>	17'
<b>Bay Size:</b>	60'
<b>Restrooms:</b>	4
<b>Power Details:</b>	200 Amps   3-Phase
<b>Lighting:</b>	LED
<b>Grade Door:</b>	(4) 12'x14'
<b>Heating:</b>	Gas Forced Air
<b>A/C:</b>	Office
<b>Notes:</b>	Brand new multi-tenant industrial building. Located just off M-53 and 33 Mile Road. Main road frontage. Energy efficient.

### Economic

<b>Lease/SF:</b>	\$12.50
<b>Lease Terms:</b>	Gross



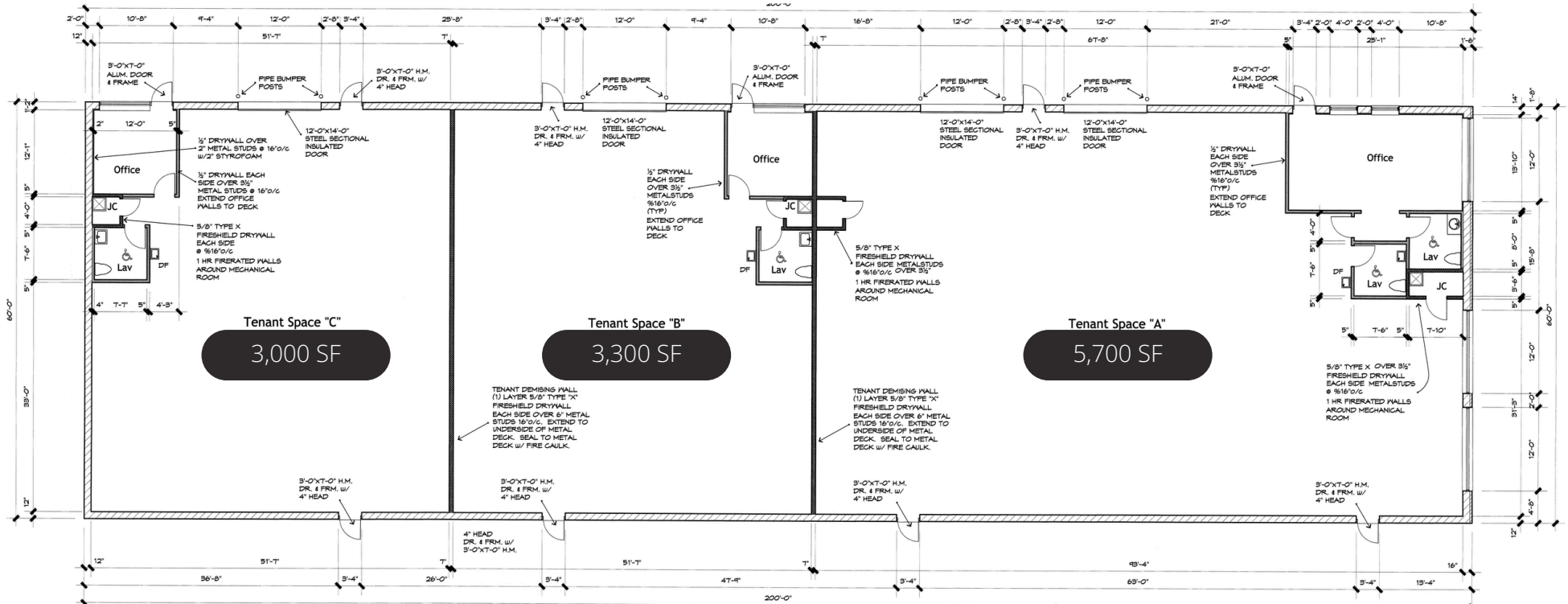
# 14890 33 Mile Road | Units A-C

Romeo, MI



L. MASON CAPITANI  
CORFAC INTERNATIONAL

## Floor Plan:



Suite Number	Square Footage
Unit A	5,700 SF
Unit B	3,300 SF
Unit C	3,000 SF

248.637.9700 | LMCap.com

Information contained herein was obtained from sources deemed to be reliable but is not guaranteed. Subjects to prior sales, changes of price or withdrawal.

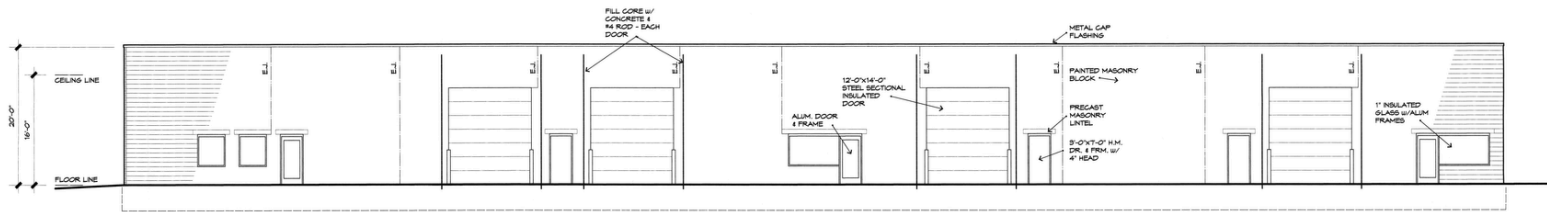
# 14890 33 Mile Road | Units A-C

Romeo, MI

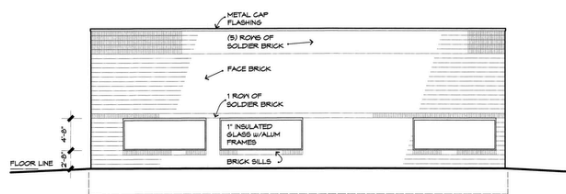


L. MASON CAPITANI  
CORFAC INTERNATIONAL

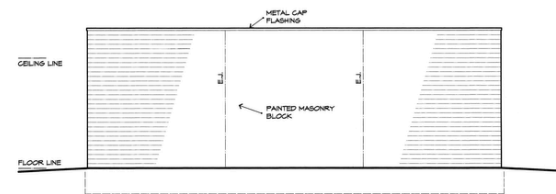
## Elevation Plans:



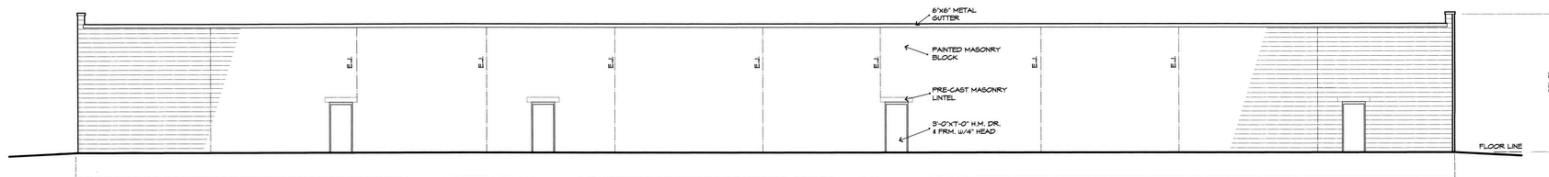
West Elevation  
Scale: 1/8" = 1'-0"



North Elevation  
Scale: 1/8" = 1'-0"



South Elevation  
Scale: 1/8" = 1'-0"



East Elevation  
Scale: 1/8" = 1'-0"

248.637.9700 | LMCap.com

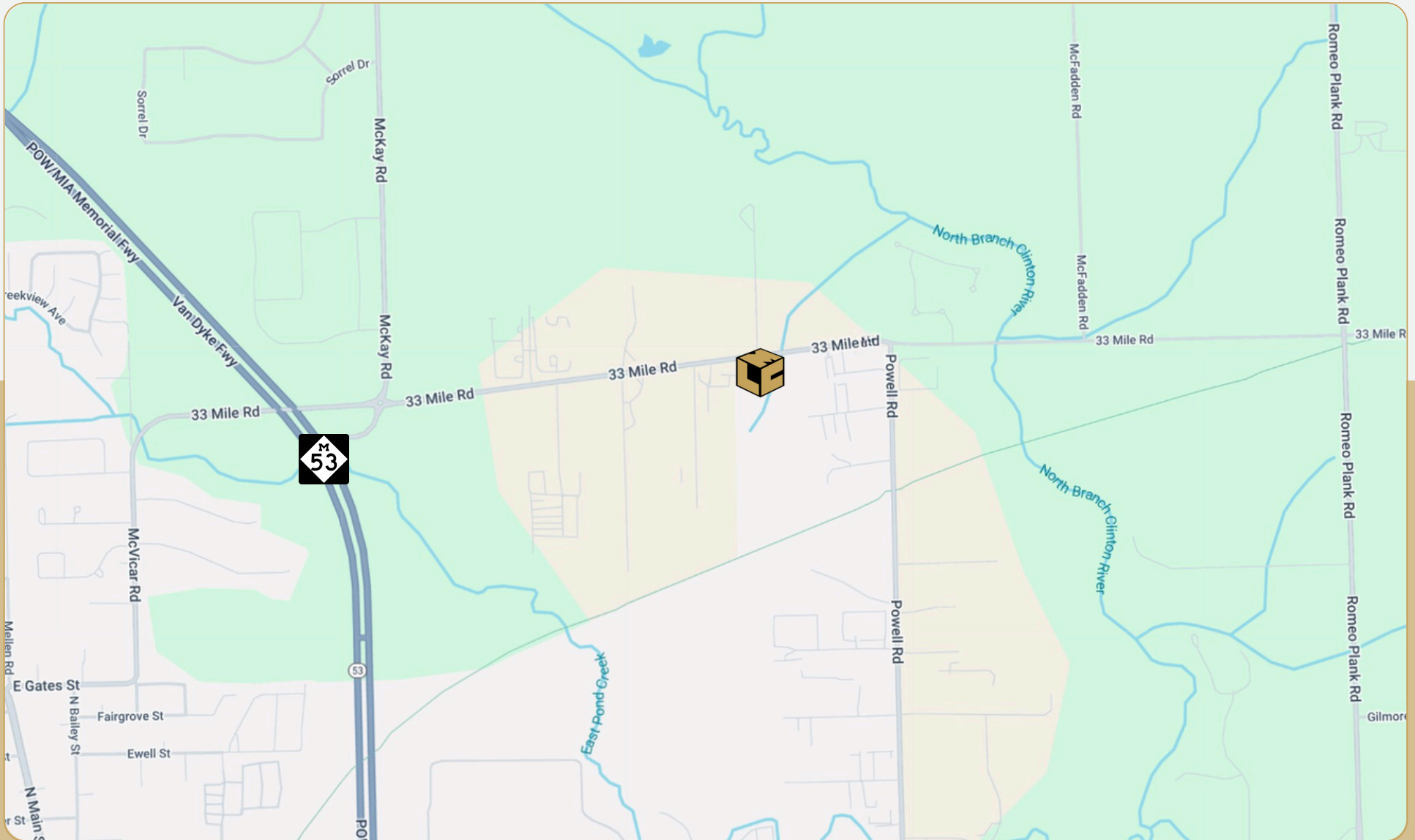
Information contained herein was obtained from sources deemed to be reliable but is not guaranteed. Subjects to prior sales, changes of price or withdrawal.

# 14890 33 Mile Road | Units A-C

Romeo, MI



L. MASON CAPITANI  
CORFAC INTERNATIONAL



248.637.9700 | LMCap.com

Information contained herein was obtained from sources deemed to be reliable but is not guaranteed. Subjects to prior sales, changes of price or withdrawal.