



1 Month of Gross Free Rent per Year of Lease Term

Edenvale Tech For Lease

Spaces Available
5,354 – 41,100 SF

- Close to retail, restaurants, shopping, and entertainment
- High-image building with great glass lines
- Ample parking for high finish office/tech tenants



- Easy access to I-494, US-212, and Hwy 5
- Demisable suites
- 100% climate controlled

**Creative Office/Tech
Space (Fully Whiteboxed)**

Up to

41,100
SF Available

Joe Owen, CCIM, SIOR
Executive Vice President
+1 952 897 7888
joe.owen@colliers.com

Corbin Chapman
Vice President
+1 952 374 5811
corbin.chapman@colliers.com

George Brekke
Associate
+1 952 210 1953
george.brekke@colliers.com



Property Highlights

Address	7600-7682 Executive Dr, Eden Prairie, MN	
Building Size	112,332 SF (combined two buildings)	
Site Area	9.77 acres	
Year Built	1986	
Clear Height	14'	
Total Power	600 amps 277/480v +800 amps 120/208v	
Parking	3.96/1,000	
Available: Suite 7676	Office	4,783 SF
	Warehouse	571 SF
	Total	5,354 SF
	1 dock door	
Available: Suite 7670	Office	2,635 SF
	Warehouse	3,114 SF
	Total	5,749 SF
	1 dock door	
Available: Suites 7670-7676	Office	4,567 SF
	Warehouse	6,526 SF
	Total	11,103 SF
	2 dock doors	
Available: Suites 7650-7664	29,997 SF Total (4 dock doors total)	
	Divisible Options:	
	• 8,072 SF	
	• 13,272 SF	
	• 13,902 SF	
	• 16,095 SF	
• 16,725 SF		
• 21,925 SF		
Lease Rates	Negotiable	
2026 Est. CAM/Tax	\$6.50 PSF	

Features



3.96/1,000
parking ratio



Nearby retail,
restaurants



High-image
finishes



Quick access to
I-494, US-212



Dock & drive-
in loading



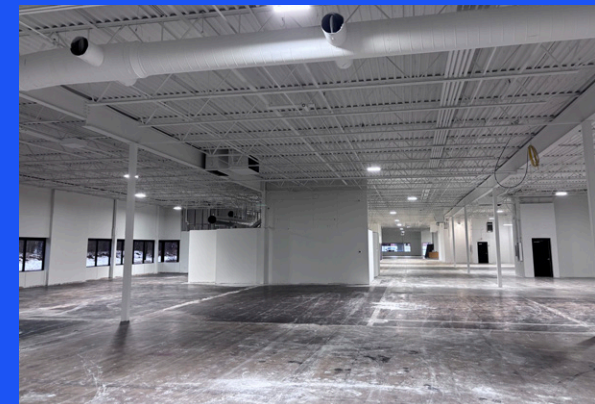
Whiteboxed
creative office

up to **41,100**
square feet available

Location

Eden Prairie is conveniently located with connections to major highways, including I-494, US-212, US-169, MN-62, and MN-5.

Site Plan



Site Aerial



Suite 7650-7670
5,354 - 41,100 SF

Floor Plan

Suite 7670

Suite 7670

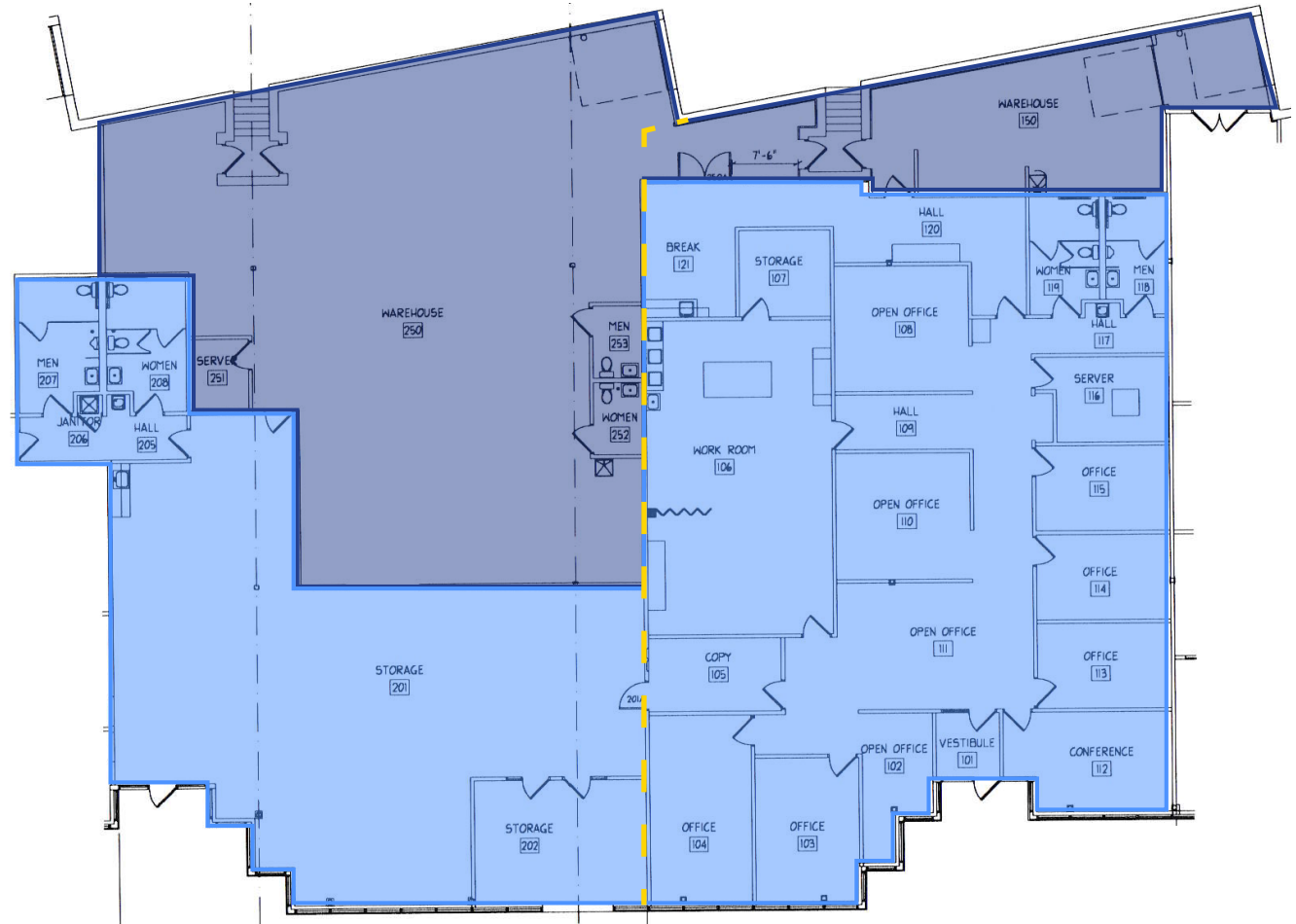
- 2,635 SF Office
- 3,114 SF Warehouse
- 5,749 SF Total**
- 1 dock door

Suite 7676

- 4,783 SF Office
- 571 SF Warehouse
- 5,354 SF Total**
- 1 dock door

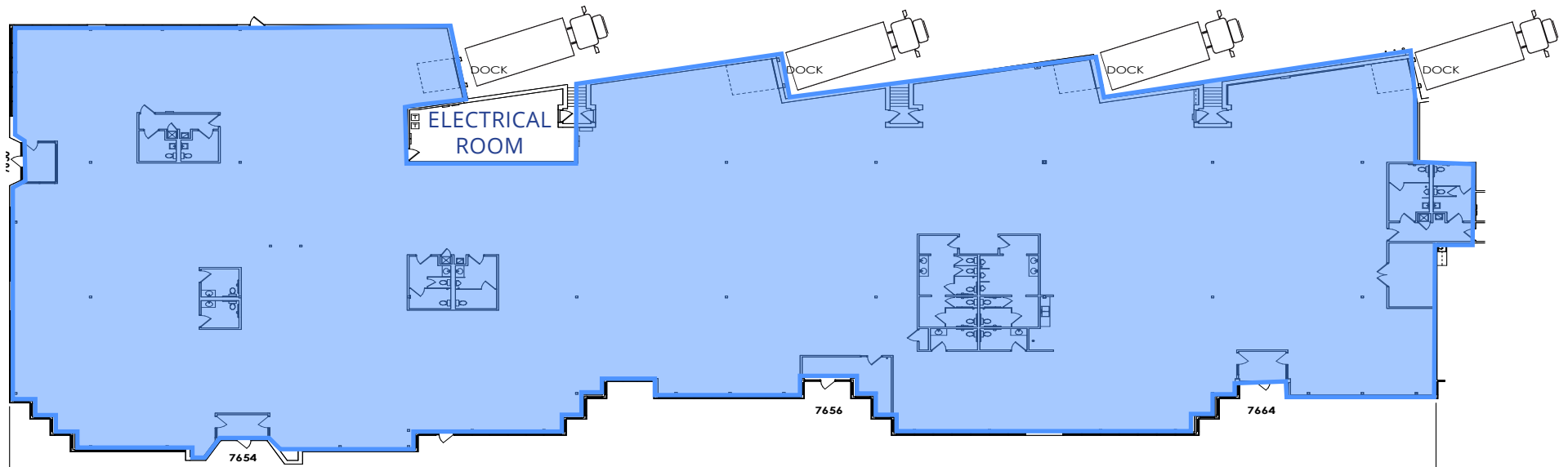
Suites 7670-7076

- 4,567 SF Office
- 6,536 SF Warehouse
- 11,103 SF Total**
- 2 dock doors



Floor Plan

Suites 7650-7664



Suite 7650-7664

29,997 SF Office/Fully climate controlled tech

- 4 dock doors
- Space is divisible per tenant request

Floor Plan Dimising Options

Suite 7650-7656

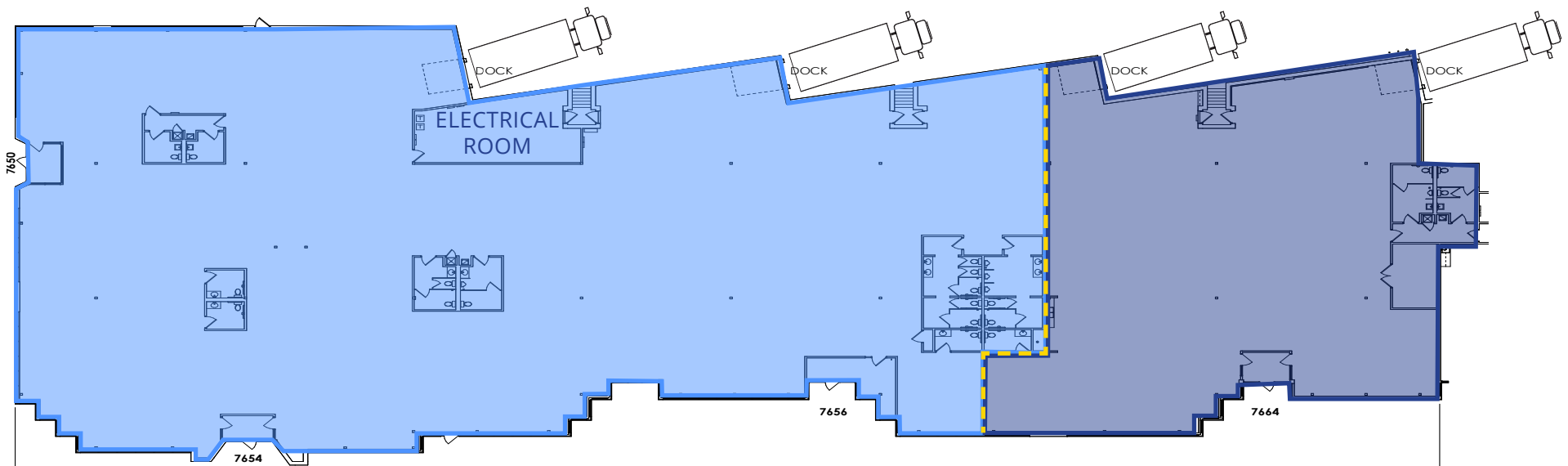
21,925 SF Total

- 2 dock doors

Suite 7650-7664

8,072 SF Total

- 2 dock doors



Floor Plan Dimising Options

Suite 7650-7654

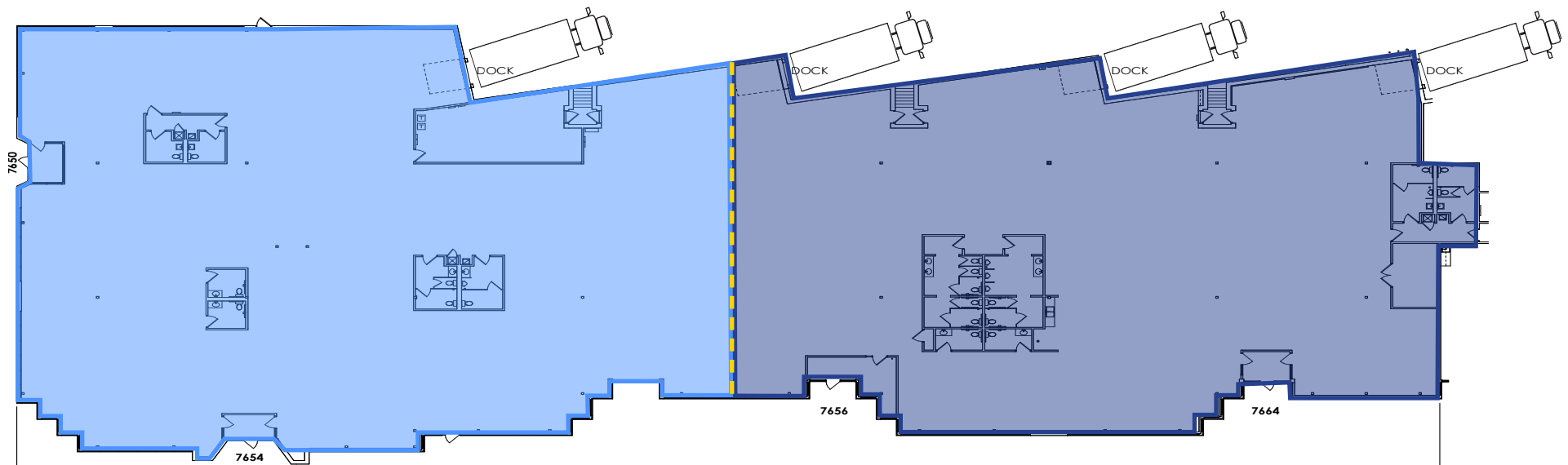
16,095 SF Total

- 1 dock door

Suite 7656-7664

13,902 SF Total

- 3 dock doors



Floor Plan Dimising Options

Suite 7650-7654

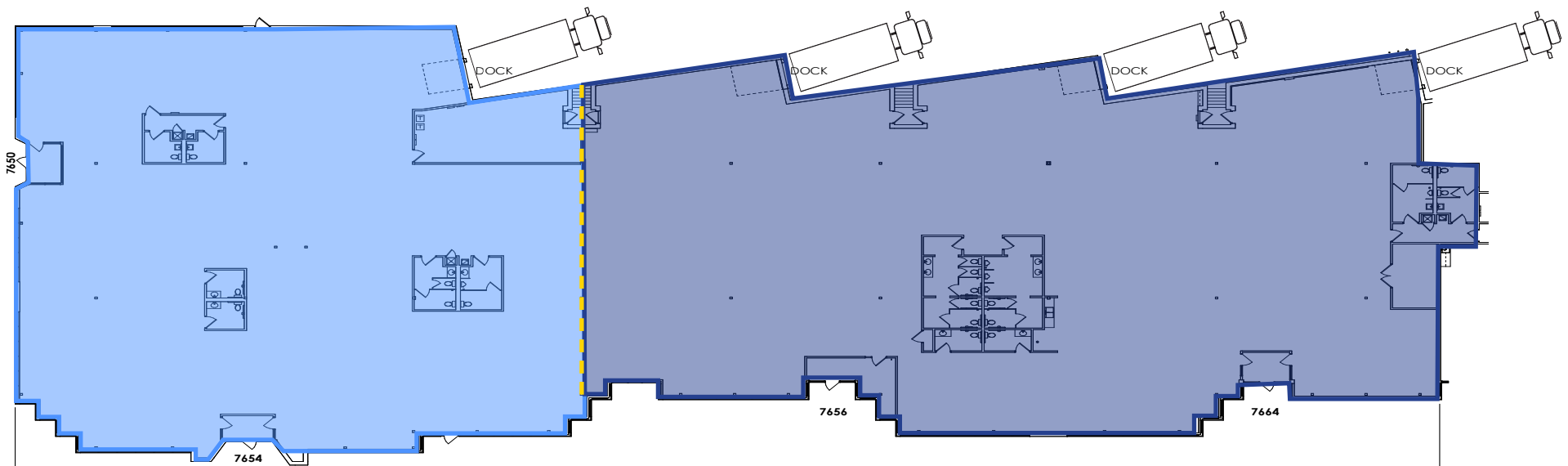
13,272 SF Total

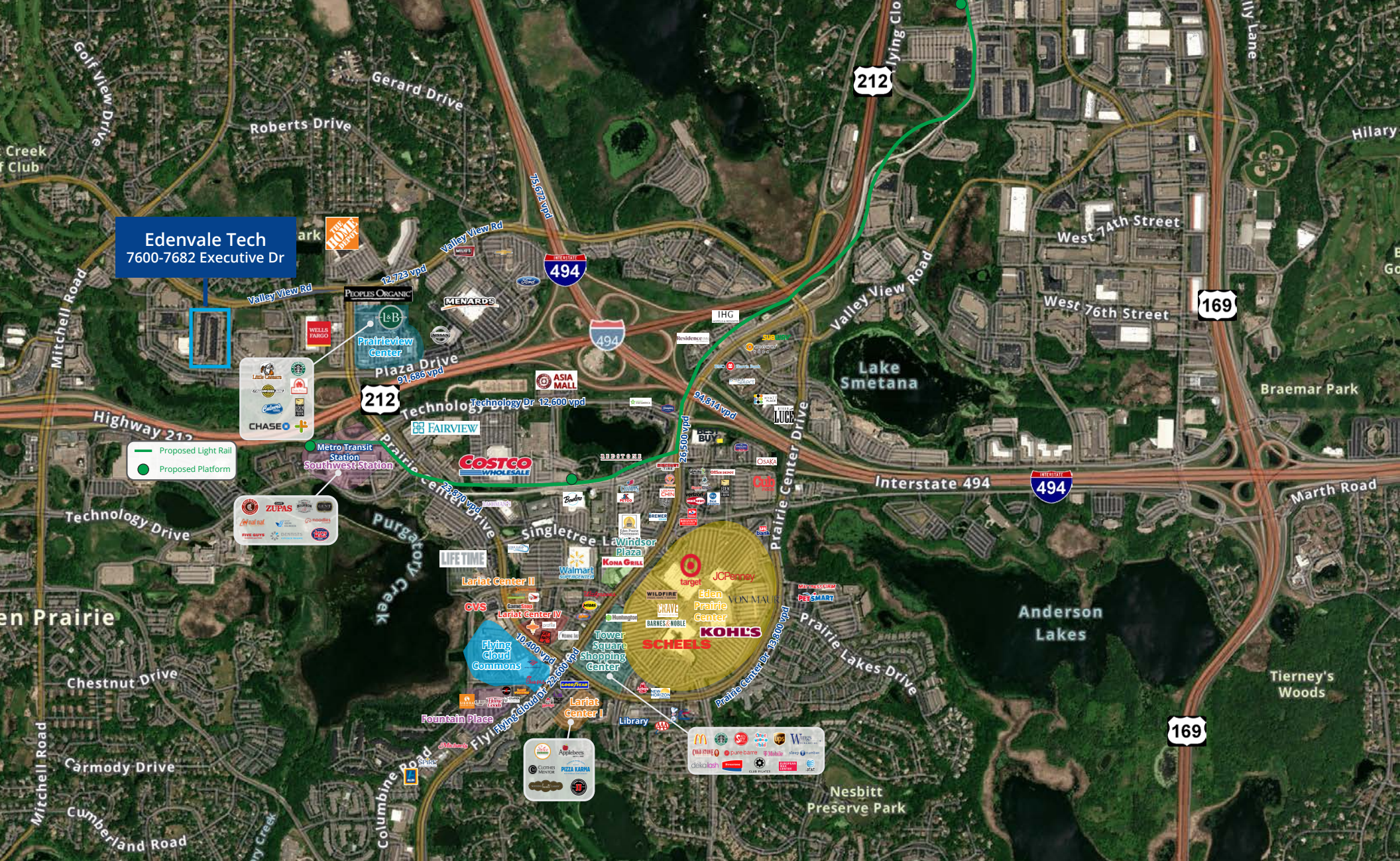
- 1 dock door

Suite 7656-7664

16,725 SF Total

- 3 dock doors





Joe Owen CCIM, SIOR
 Executive Vice President
 +1 952 897 7888
 joe.owen@colliers.com

Corbin Chapman
 Vice President
 +1 952 374 5811
 corbin.chapman@colliers.com

George Brekke
 Associate
 +1 952 210 1953
 george.brekke@colliers.com

This document has been prepared by Colliers for advertising and general information only. Colliers makes no guarantees, representations or warranties of any kind, expressed or implied, regarding the information including, but not limited to, warranties of content, accuracy and reliability. Any interested party should undertake their own inquiries as to the accuracy of the information. Colliers excludes unequivocally all inferred or implied terms, conditions and warranties arising out of this document and excludes all liability for loss and damages arising there from. This publication is the copyrighted property of Colliers and/or its licensor(s). Copyright © 2024. All rights reserved. This communication is not intended to cause or induce breach of an existing listing agreement Colliers International MN, LLC