

# INDUSTRIAL WAREHOUSE

2501 Jennings St | San Francisco, CA



**4,300 SF AVAILABLE FOR LEASE**

**Jeffrey Ida | Founding Principal**

E: [jjda@lee-associates.com](mailto:jjda@lee-associates.com)

P: (415) 828-7679

LIC# 01826381

**Doug Ogard | Vice President**

E: [dogard@lee-associates.com](mailto:dogard@lee-associates.com)

P: (415) 842-1889

LIC# 02103324

# 2501 JENNINGS ST | SAN FRANCISCO, CA

Jeffrey Ida | Founding Principal  
(415) 828-7679

Doug Ogard | Vice President  
(415) 842-1889

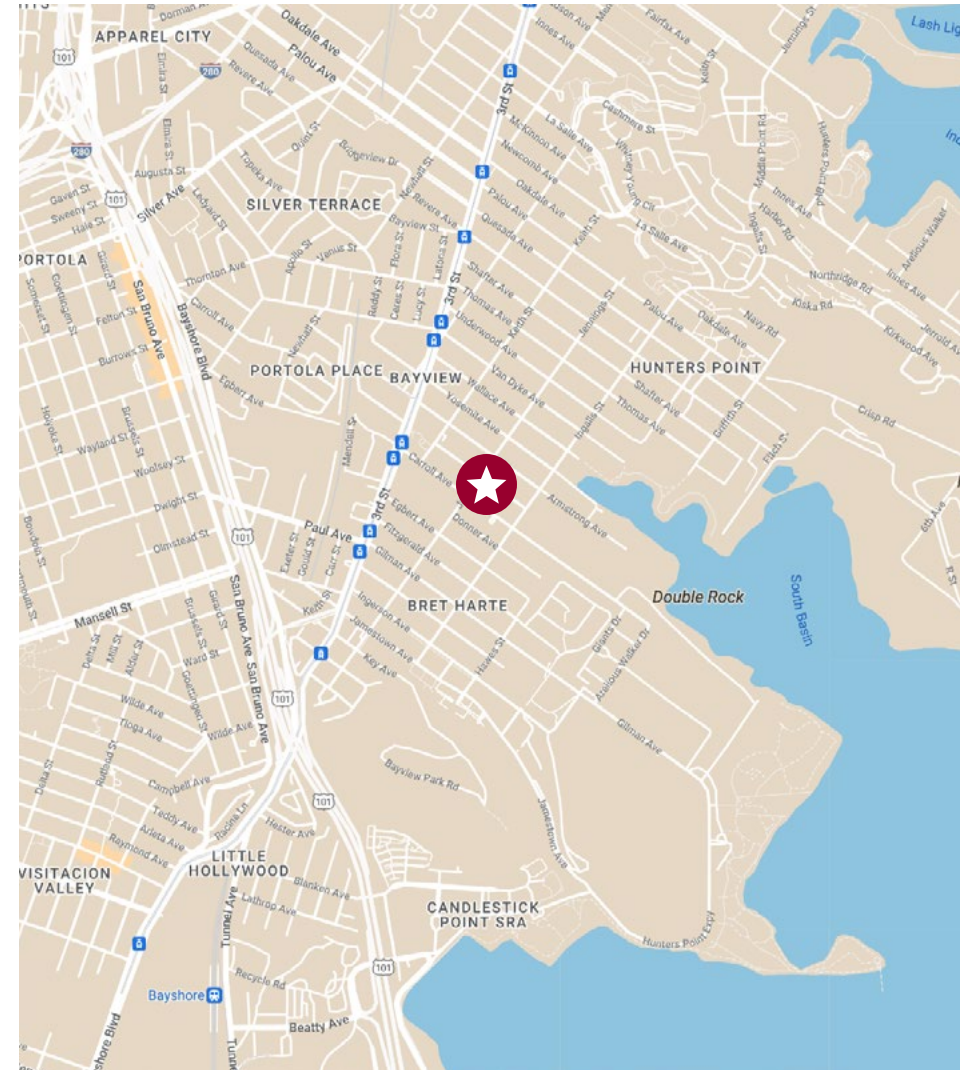
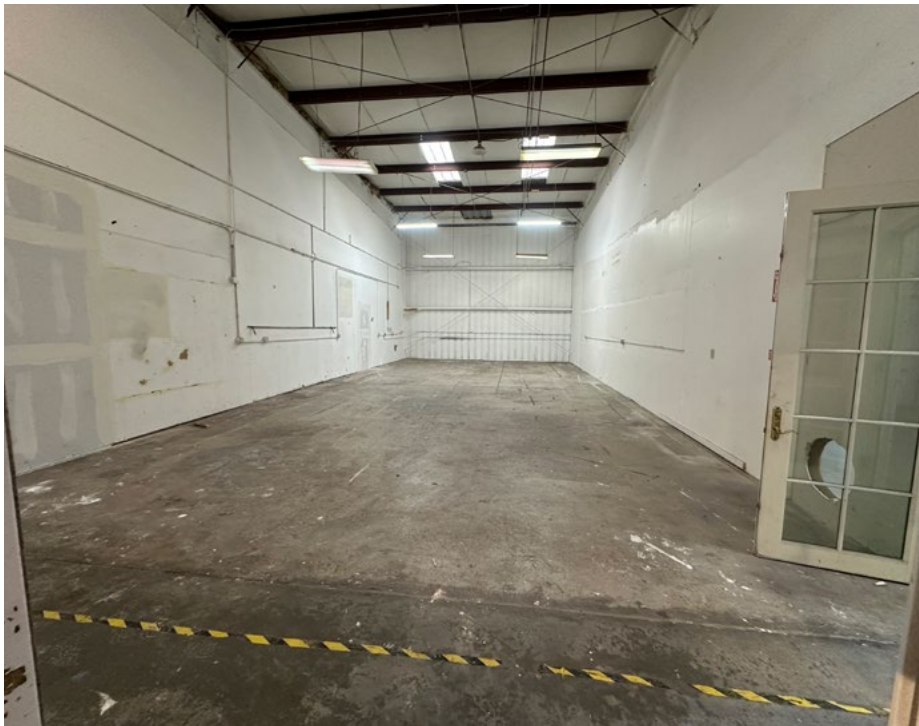
## INDUSTRIAL WAREHOUSE

Space 1 - Leased

Space 2 - Available For Lease

Space 1	3,800 SF
Space 2	4,300 SF

- 4,300 SF Unit
- 18' Clear Height
- 1 Grade Level Doors
- Professional Spray Booth
- Insulated roof
- 200 Amp 3 Phase 240 Volt
- Two Electrical Meters
- Separate Bathroom and Office spaces
- [PDR-2 - Pdr Production, Distribution, And Repair](#)



Lee & Associates San Francisco Commercial Real Estate | 242 California Street, San Francisco, CA 94111 | [www.lee-associates.com](http://www.lee-associates.com)

All information furnished regarding property for sale, rental or financing is from sources deemed reliable, but no warranty or representation is made to the accuracy thereof and same is submitted to errors, omissions, change of price, rental or other conditions prior to sale, lease or financing or withdrawal without notice. No liability of any kind is to be imposed on the broker herein.



# 2501 JENNINGS ST | SAN FRANCISCO, CA

INDUSTRIAL WAREHOUSE

Jeffrey Ida | Founding Principal  
(415) 828-7679

Doug Ogard | Vice President  
(415) 842-1889



Lee & Associates San Francisco Commercial Real Estate | 242 California Street, San Francisco, CA 94111 | [www.lee-associates.com](http://www.lee-associates.com)

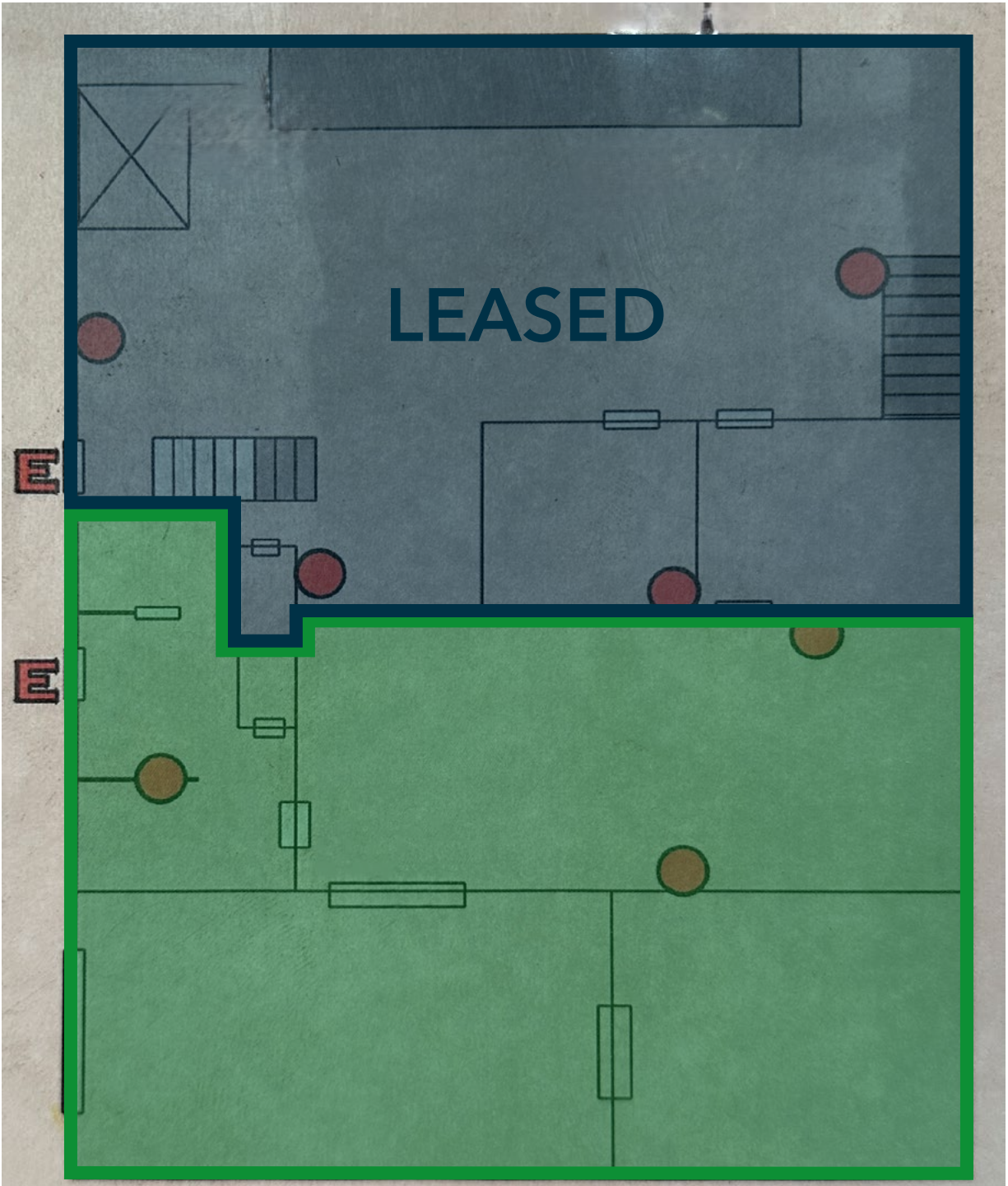
*All information furnished regarding property for sale, rental or financing is from sources deemed reliable, but no warranty or representation is made to the accuracy thereof and same is submitted to errors, omissions, change of price, rental or other conditions prior to sale, lease or financing or withdrawal without notice. No liability of any kind is to be imposed on the broker herein.*


# 2501 JENNINGS ST | SAN FRANCISCO, CA


INDUSTRIAL WAREHOUSE

Jeffrey Ida | Founding Principal  
(415) 828-7679

Doug Ogard | Vice President  
(415) 842-1889



 Space 1 - 3,800 SF Space (Leased)

 Space 2 - 4,300 SF Space

Lee & Associates San Francisco Commerical Real Estate | 242 California Street, San Francisco, CA 94111 | [www.lee-associates.com](http://www.lee-associates.com)

*All information furnished regarding property for sale, rental or financing is from sources deemed reliable, but no warranty or representation is made to the accuracy thereof and same is submitted to errors, omissions, change of price, rental or other conditions prior to sale, lease or financing or withdrawal without notice. No liability of any kind is to be imposed on the broker herein.*