



LYNCHBURG OFFICE CONDOMINIUMS

2250 Murrell Road Suites B4, B5 and B6, Lynchburg, VA 24501

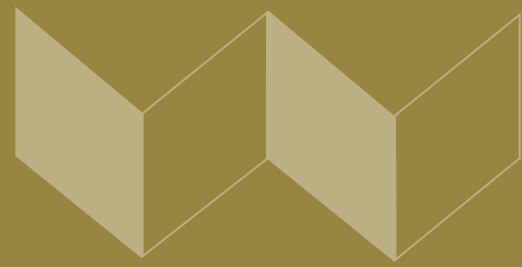
KRISTA VANNOY, CCIM, SIOR
Vice President & COO
540.342.0881
kvannoy@waldvogelcommercial.com

MICHAEL WALDVOGEL, CCIM, SIOR
President & CEO
540.342.8599
mwaldvogel@waldvogelcommercial.com



Lynchburg Office Condominiums

2250 MURRELL RD, STES B4, B5, B6



PROPERTY HIGHLIGHTS

- Opportunity for Occupier and/or Investor
- In-place Income
- Abundant Parking
- Nicely-maintained and Well-landscaped Property

OFFERING SUMMARY

Sale Price:	\$355,000
Number of Units:	3
Building Size:	3,600 SF

PROPERTY DESCRIPTION

3,600 SF office property currently configured for two tenants. Suites B5 and B6 offer a combined 2,400 SF office suite featuring a large reception area, 7 private offices plus a conference or training room, 2 restrooms, large storage closet and a coffee break counter. Space was originally built as two separate offices and could easily be subdivided again to accommodate two smaller tenants/occupants. Finishes are updated neutrals with LVP flooring.

Suite B4 is fully separated from Suites B5 and B6 and is leased on a three year term.

Suites B5 and B6 are currently available for lease and can be leased as one unit or subdivided into two units.

This property offers a great opportunity for an owner-occupant or investor.

LOCATION DESCRIPTION

Located in the well-established Lakeside Plaza Office Condominiums with easy access to Centra Health facilities, office, retail, schools and local primary transportation routes.

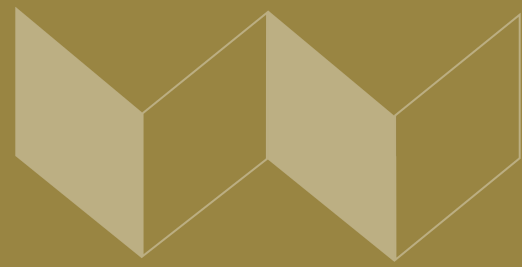
KRISTA VANNOY, CCIM, SIOR
Vice President & COO
540.342.0881
kvannoy@waldvogelcommercial.com

MICHAEL WALDVOGEL, CCIM, SIOR
President & CEO
540.342.8599
mwaldvogel@waldvogelcommercial.com



2250 Murrell Rd, Stes B4, B5, B6 Lynchburg, VA 24501

PHOTOS



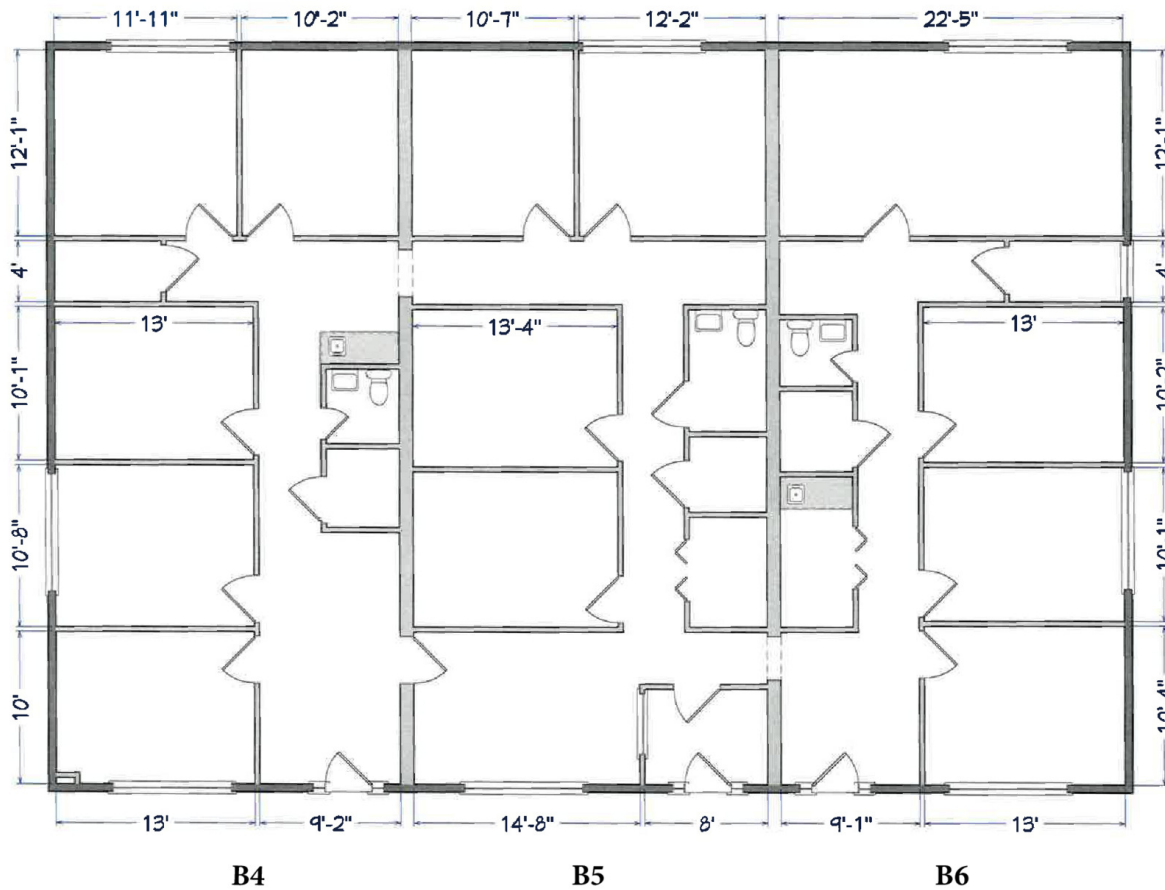
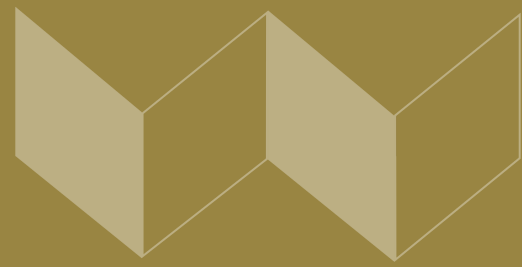
KRISTA VANNOY, CCIM, SIOR
Vice President & COO
540.342.0881
kvannoy@waldvogelcommercial.com

MICHAEL WALDVOGEL, CCIM, SIOR
President & CEO
540.342.8599
mwaldvogel@waldvogelcommercial.com



2250 Murrell Rd, Stes B4, B5, B6 Lynchburg, VA 24501

FLOORPLAN



2250 MURRELL RD
UNITS B4, B5, B6,

THIS DRAWING IS NOT AN
ARCHITECTURAL RENDERING
IT IS FOR THE SOLE PURPOSE
OF SHOWING THE
APPROXIMATE EXISTING
FLOOR PLAN AND ITS
APPROXIMATE DIMENSIONS.

KRISTA VANNOY, CCIM, SIOR
Vice President & COO
540.342.0881
kvannoy@waldvogelcommercial.com

MICHAEL WALDVOGEL, CCIM, SIOR
President & CEO
540.342.8599
mwaldvogel@waldvogelcommercial.com



2250 Murrell Rd, Stes B4, B5, B6 Lynchburg, VA 24501

AREA HIGHLIGHTS



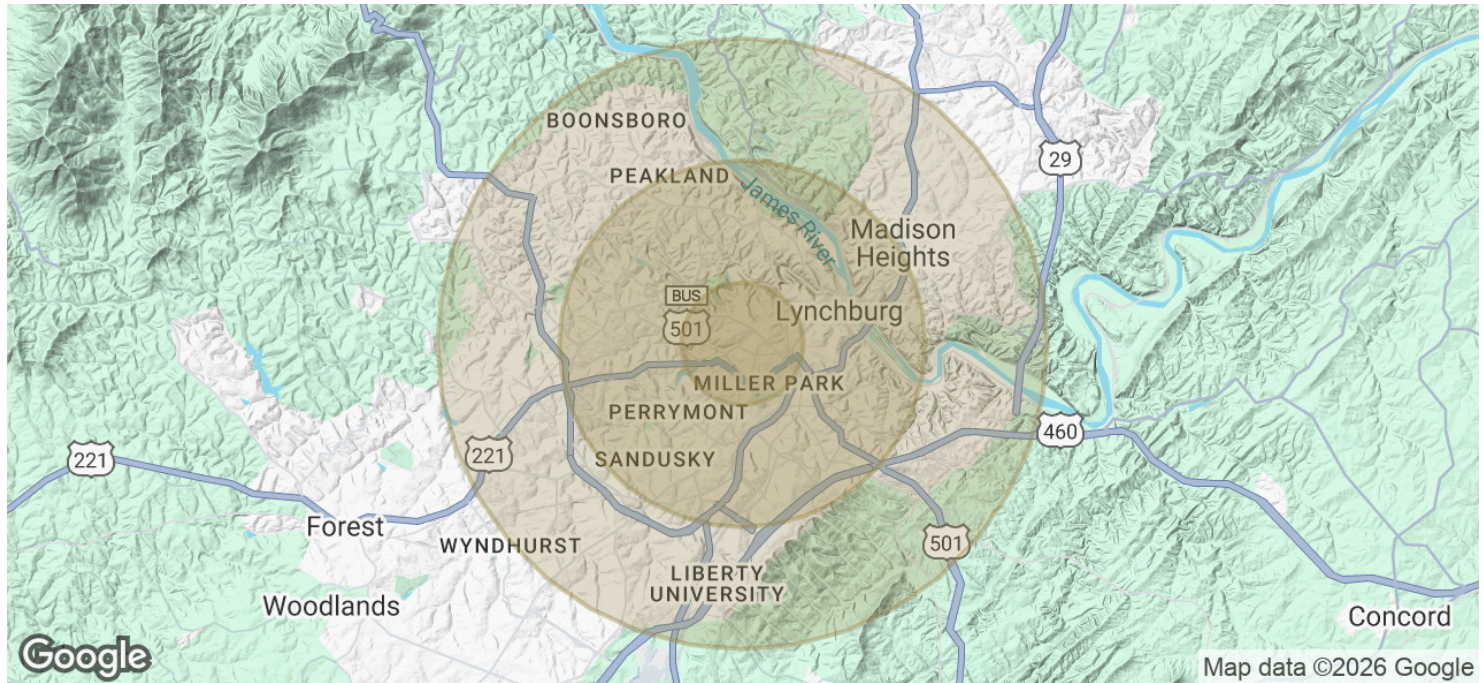
KRISTA VANNOY, CCIM, SIOR
Vice President & COO
540.342.0881
kvannoy@waldvogelcommercial.com

MICHAEL WALDVOGEL, CCIM, SIOR
President & CEO
540.342.8599
mwaldvogel@waldvogelcommercial.com



2250 Murrell Rd, Stes B4, B5, B6 Lynchburg, VA 24501

DEMOGRAPHICS



POPULATION	1 MILE	3 MILES	5 MILES
Total Population	8,885	48,397	86,462
Average Age	36	39	38
Average Age (Male)	34	37	37
Average Age (Female)	38	40	39

HOUSEHOLDS & INCOME	1 MILE	3 MILES	5 MILES
Total Households	3,165	20,267	33,587
# of Persons per HH	2.8	2.4	2.6
Average HH Income	\$58,862	\$76,945	\$83,372
Average House Value	\$148,534	\$219,171	\$240,032

Demographics data derived from AlphaMap

KRISTA VANNOY, CCIM, SIOR
Vice President & COO

540.342.0881
kvannoy@waldvogelcommercial.com

MICHAEL WALDVOGEL, CCIM, SIOR
President & CEO

540.342.8599
mwaldvogel@waldvogelcommercial.com

