

RETAIL INDUSTRIAL WHSE FOR SALE

4301 S ROBINSON AVE, OKLAHOMA CITY, OK 73109



OFFERING SUMMARY

Sale Price:	\$390,000
Lot Size:	0.36 Acres
Year Built:	1954
Building Size SF:	7,700
Zoning:	I-2
Price / SF:	\$50.65

LOCATION OVERVIEW

Located on the corner of SW 42nd St & S Robinson Ave in Oklahoma City, OK. 1.65 miles to I-35 and 2.1 miles to I-240.



PROPERTY HIGHLIGHTS

- Former Golf Cart Dealership with Various Showroom/ Office/ Warehouse Areas
- Glass Retail Storefront under R-Panel
- New Roof in 2023 with Warranty
- 2 Sliding Warehouse Doors
- 80% MOL Climate Controlled
- Outdoor Fenced Storage Area
- Seller Open to Owner Carry

DAVID LIDE

Equity Commercial Realty Advisors, LLC
dlide@equityrealty.net

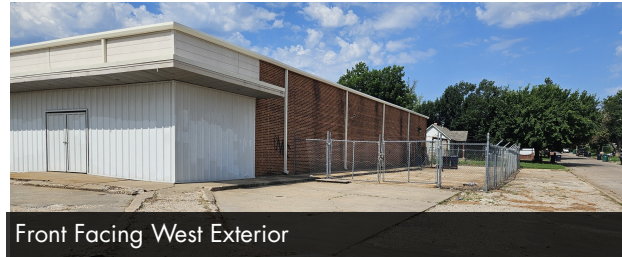
(405) 361- 2100 cell
(405) 364- 5300 office

RETAIL INDUSTRIAL WHSE FOR SALE

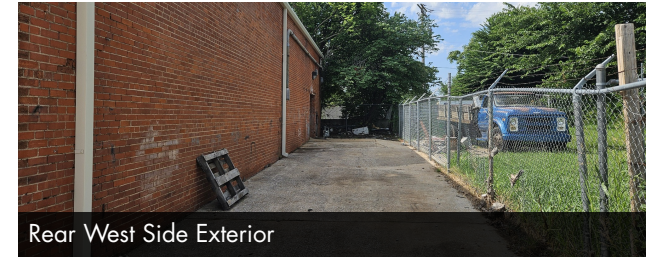
4301 S ROBINSON AVE, OKLAHOMA CITY, OK 73109



Front Facing North Exterior



Front Facing West Exterior



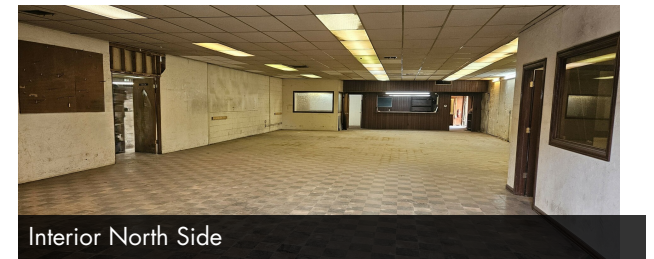
Rear West Side Exterior



North Side Entrance



Glass behind R-Panel



Interior North Side



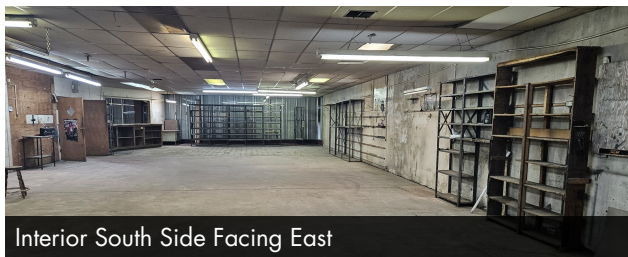
Office #1 Near Entrance



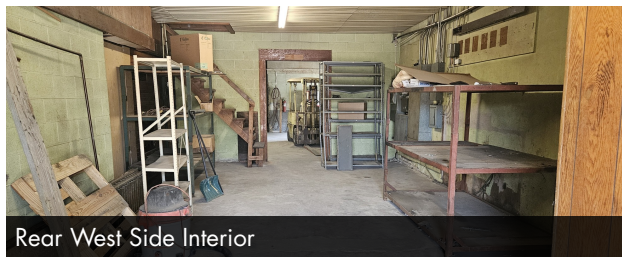
Office #2 & #3



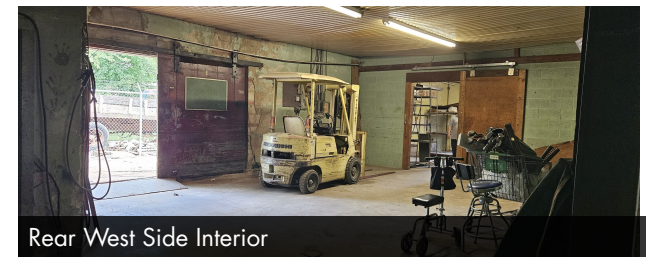
Interior South Side Facing West



Interior South Side Facing East



Rear West Side Interior



Rear West Side Interior

DAVID LIDE

Equity Commercial Realty Advisors, LLC
dlide@equityrealty.net

(405) 361- 2100 cell
(405) 364- 5300 office